

## Manuals+

[Q & A](#) | [Deep Search](#) | [Upload](#)

manuals.plus /

› [Pitco](#) /

› [Pitco B8044250-C Orifice Burner User Manual](#)

## Pitco B8044250-C

# Pitco B8044250-C Orifice Burner User Manual

Model: B8044250-C | Part Number: #46, Ssh60W

## INTRODUCTION

---

This manual provides essential information for the proper installation, operation, and maintenance of the Pitco B8044250-C Orifice Burner. This component is a genuine OEM (Original Equipment Manufacturer) replacement part designed for specific Pitco foodservice equipment. Adhering to these instructions will ensure safe and efficient performance of the burner.

Always consult a qualified technician for installation and service, especially when dealing with gas appliances. Keep this manual for future reference.

## SAFETY INFORMATION

---

**WARNING:** Improper installation, adjustment, alteration, service, or maintenance can cause property damage, injury, or death. Read the installation, operating, and maintenance instructions thoroughly before installing or servicing this equipment.

- Ensure all gas and electrical connections are performed by a licensed professional.
- Always shut off gas supply and disconnect power before performing any service or maintenance.
- Verify proper ventilation in the installation area.
- Do not obstruct the flow of combustion and ventilation air.
- Use only genuine Pitco replacement parts.

## SETUP AND INSTALLATION

---

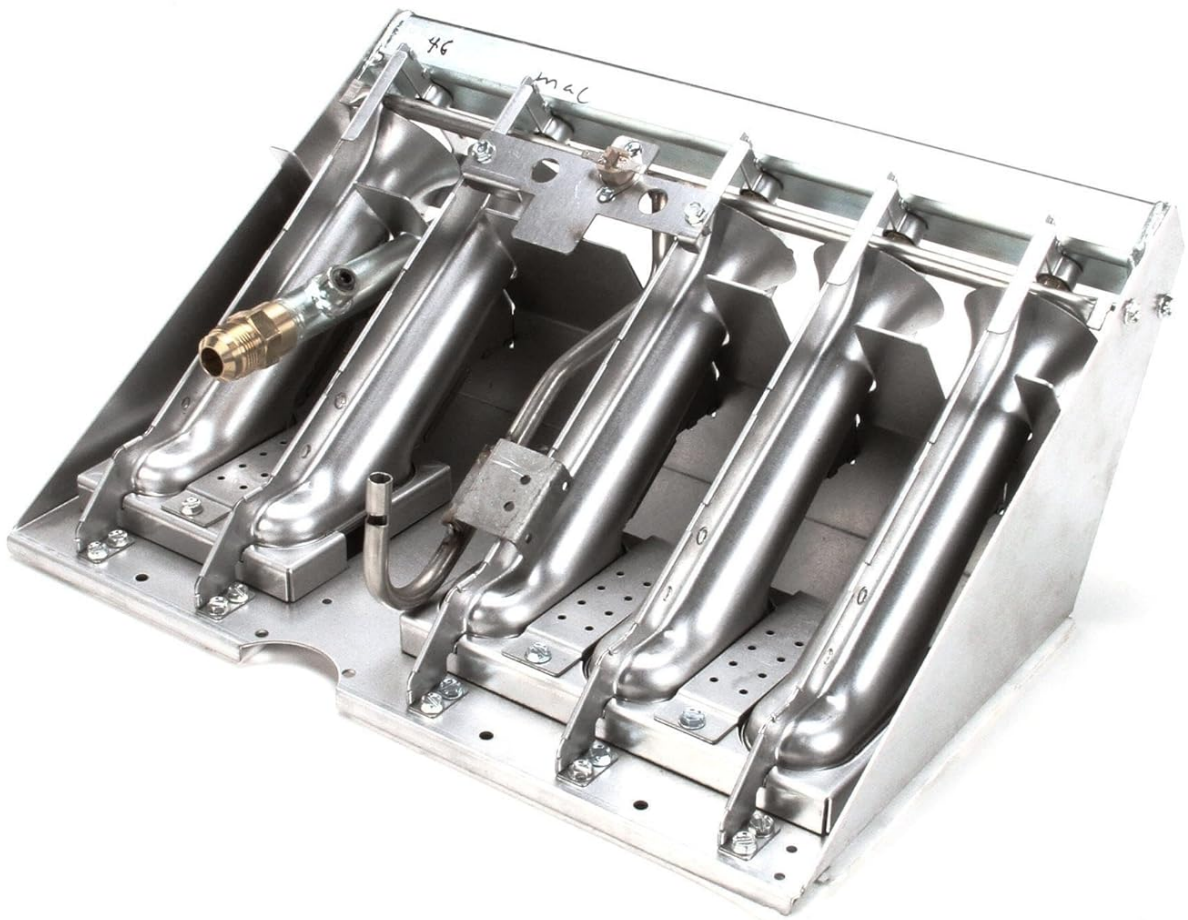
The Pitco B8044250-C Orifice Burner is a critical component within a larger appliance. Installation should only be performed by a qualified and authorized service technician.

### Pre-Installation Checks:

- Confirm the new burner matches the specifications of the original part being replaced.
- Inspect the burner for any shipping damage. Do not install if damaged.
- Ensure all necessary tools and safety equipment are available.

### Installation Steps (General Guidance):

1. **Disconnect Power and Gas:** Turn off the main gas supply valve to the appliance and disconnect electrical power.
2. **Access Burner Compartment:** Carefully remove any panels or covers to gain access to the existing burner assembly.
3. **Remove Old Burner:** Disconnect any gas lines, ignition wires, or mounting hardware securing the old burner. Note the orientation and connections for reassembly.
4. **Install New Burner:** Position the Pitco B8044250-C Orifice Burner in the correct orientation. Secure it using the appropriate mounting hardware.
5. **Connect Gas and Ignition:** Reconnect the gas supply line to the burner orifice, ensuring a tight, leak-free seal. Reconnect any ignition wires or sensors.
6. **Leak Test:** After installation, perform a thorough gas leak test using an approved leak detection solution. *Never use an open flame to check for leaks.*
7. **Restore Power and Test:** Restore gas supply and electrical power. Test the burner for proper ignition and flame characteristics according to the appliance's specific service manual.
8. **Reassemble:** Replace all removed panels and covers.



**Figure 1:** Pitco B8044250-C Orifice Burner assembly. This image displays the complete burner unit, including the gas manifold and multiple burner tubes, ready for installation into compatible Pitco equipment.

## OPERATING PRINCIPLES

---

The Pitco B8044250-C Orifice Burner is designed to efficiently mix gas and air for optimal combustion within a fryer or other heating appliance. The orifice, designated as #46, controls the precise flow of gas into the burner tubes, ensuring consistent flame characteristics and heat output.

- **Gas Flow:** Gas enters the manifold and is directed through the #46 orifice into each burner tube.
- **Air Mixture:** As gas exits the orifice, it draws in primary air, creating a combustible mixture.
- **Ignition:** An ignition source (e.g., pilot light or electronic igniter) ignites the gas-air mixture at the burner ports.
- **Combustion:** The flame heats the appliance, transferring energy efficiently.

Proper operation relies on the correct gas pressure and air-to-gas ratio, which are typically set during the initial appliance installation and should only be adjusted by a qualified technician.



**Figure 2:** Side-angled view of the burner. This perspective highlights the gas inlet connection point and the precise alignment of the individual burner tubes, which are crucial for even heat distribution within the appliance.

## MAINTENANCE

---

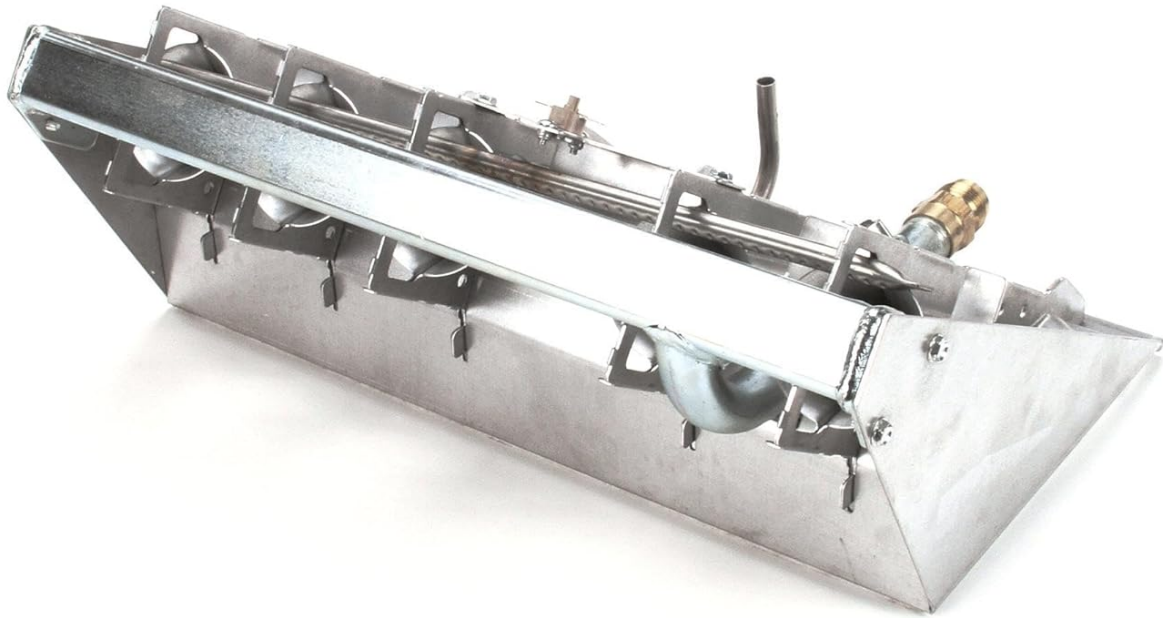
Regular maintenance is crucial for the longevity and efficient operation of the Pitco B8044250-C Orifice Burner. All maintenance procedures should be performed by a qualified service technician.

### Recommended Maintenance Schedule:

- **Monthly:** Visually inspect burner flames for proper color (blue, stable) and shape. Check for any signs of soot or carbon buildup.
- **Quarterly/Bi-Annually:** (Depending on usage)
  - Clean burner tubes and ports to remove any debris or carbon deposits. Use a soft brush or compressed air.
  - Inspect the orifice for obstructions or damage. Do not attempt to enlarge the orifice.
  - Check all gas connections for leaks.
  - Verify proper ignition system function.

### Cleaning Instructions:

1. **Shut Down:** Turn off the appliance, disconnect power, and shut off the gas supply. Allow the burner to cool completely.
2. **Access:** Carefully remove panels to access the burner.
3. **Clean:** Use a non-abrasive brush or vacuum to remove loose debris. For stubborn deposits, a mild degreaser may be used, ensuring thorough rinsing and drying before reassembly.
4. **Inspect:** After cleaning, inspect the burner for any cracks, corrosion, or signs of wear.
5. **Reassemble:** Reassemble the appliance and restore gas and power.



**Figure 3:** Structural view of the burner. This image provides a clear view of the robust construction and various mounting points, which are important for secure installation and stability within the appliance.

## TROUBLESHOOTING

This section outlines common issues related to burner performance. For complex problems or if you are unsure, always contact a qualified service technician.

Problem	Possible Cause	Solution
Burner does not ignite.	No gas supply; faulty igniter; clogged orifice; loose wiring.	Check gas valve; inspect/replace igniter; clean orifice; check connections.
Weak or yellow flame.	Insufficient air supply; low gas pressure; partially clogged burner ports/orifice.	Check ventilation; verify gas pressure (technician only); clean burner ports/orifice.

Problem	Possible Cause	Solution
Soot or carbon buildup.	Improper air-to-gas mixture; dirty burner.	Adjust air shutter (technician only); clean burner thoroughly.
Gas odor.	Gas leak.	<b>Immediately shut off gas supply and ventilate area. Do not operate. Contact qualified technician.</b>



**Figure 4:** Rear view of the burner assembly. This view helps in understanding the overall structure and how it integrates into the appliance, particularly for accessing connections during installation or troubleshooting.

## SPECIFICATIONS

Attribute	Detail
-----------	--------

Attribute	Detail
Model Number	B8044250-C
Part Description	Orifice Burner, #46, Ssh60W
Brand	Pitco
Product Dimensions	15.5 x 10 x 16 inches
Item Weight	12.4 Pounds
Manufacturer	Pitco
Type	Genuine OEM Replacement Part

## WARRANTY INFORMATION

---

As a genuine OEM replacement part, the Pitco B8044250-C Orifice Burner is typically covered by the manufacturer's warranty for replacement parts. Specific warranty terms and conditions may vary depending on the purchase location and date.

Please retain your proof of purchase. For detailed warranty information, refer to the documentation provided with your original Pitco appliance or contact Pitco customer support directly. Warranty claims are usually handled through the authorized dealer or service provider from whom the part was purchased.

## CUSTOMER SUPPORT

---

For technical assistance, service inquiries, or to locate an authorized service provider for your Pitco equipment, please contact Pitco customer support or visit their official website.

*Note:* Always provide your product model number (B8044250-C) and the serial number of the appliance it is installed in when contacting support.

For general inquiries or to find more information about Pitco products, you may visit the [Pitco Brand Page on Amazon](#) (link provided for reference, actual support contact details should be sought from official Pitco channels).