

Sercomm OC835-V3

Sercomm ADT PULSE OC835-V2 Outdoor Camera User Manual

Model: OC835-V3

1. INTRODUCTION

The Sercomm OC835-V2 is an advanced HD indoor and outdoor night vision camera designed for integration with ADT Pulse systems. This model serves as the newest version and replacement for the OC810ADT, offering enhanced features and compatibility with V.1 & V.2 ADT Pulse systems. It provides crystal clear 720P HD recording capabilities and is cloud link enabled (Version 2).

Key features include:

- New 2017 ADT Pulse Version
- Cloud Link Enabled Version 2
- Crystal clear 720P HD recording
- Weatherproof design for outdoor use
- Unlimited 30-day recordings when used with ADT Pulse service

2. SETUP

Before beginning the setup process, ensure you have an active ADT Pulse system and a stable Wi-Fi network connection. The camera requires a corded electric power source.

2.1 Package Contents

Verify that all components are present in the package. Typically, the package includes one OC835-V2 camera unit.

2.2 Physical Installation



Figure 1: Sercomm ADT Pulse OC835-V2 Outdoor Camera

This image displays the front of the Sercomm OC835-V2 camera. It features a black rectangular body with rounded corners, housing the main camera lens, an infrared sensor, and a light sensor. The "ADT" logo is visible on the lower right. The camera is supported by a white, bifurcated stand, allowing for desktop placement or mounting.

The OC835-V2 camera can be used for both indoor and outdoor applications. It supports flexible mounting options, including desktop placement or secure mounting with screws. Choose a location that provides optimal viewing angles and is within range of your Wi-Fi network.

1. **Power Connection:** Connect the camera to a standard electrical outlet using the provided power adapter. Ensure the power source is stable.
2. **Placement/Mounting:**
 - For desktop use, place the camera on a flat, stable surface.
 - For mounted installation, use appropriate screws and anchors (not included) to secure the camera's base to a wall or ceiling. Adjust the camera's angle for desired coverage.

2.3 Network Configuration (ADT Pulse)

This camera is designed to integrate with your existing ADT Pulse system. Refer to your ADT Pulse system's user manual or the ADT Pulse app for specific instructions on adding a new camera device. Generally, this involves:

1. Accessing the device management section within your ADT Pulse portal or app.
2. Selecting the option to add a new camera.
3. Following the on-screen prompts to connect the camera to your Wi-Fi network and link it to your ADT Pulse account.

The camera utilizes Wi-Fi for wireless communication. Ensure your Wi-Fi network is operational and the camera is within range for optimal performance.

3. OPERATING INSTRUCTIONS

Once successfully integrated with your ADT Pulse system, the OC835-V2 camera can be controlled and monitored via the ADT Pulse app or web portal.

3.1 Live View

Access the live video feed from your camera through the ADT Pulse interface. The camera provides a 720p HD video

capture resolution, offering clear real-time monitoring.

3.2 Recording and Storage

The camera supports recording capabilities managed by the ADT Pulse system. With an active ADT Pulse subscription, you can benefit from unlimited 30-day recordings, allowing you to review footage from the past month.

3.3 Night Vision

Equipped with infrared technology, the OC835-V2 provides clear night vision, enabling surveillance in low-light or no-light conditions. The camera automatically switches to night vision mode as ambient light decreases.

3.4 Motion Detection

Configure motion detection settings within your ADT Pulse system. The camera can trigger recordings or send alerts when motion is detected in its field of view.

4. MAINTENANCE

Proper maintenance ensures the longevity and optimal performance of your camera.

4.1 Cleaning

To clean the camera lens and body, use a soft, dry, lint-free cloth. For stubborn dirt, slightly dampen the cloth with water. Avoid using harsh chemicals, solvents, or abrasive cleaners, as these can damage the camera's finish or lens coating.

4.2 Weather Protection

While the OC835-V2 is designed to be weatherproof, ensure it is installed in a location that minimizes direct exposure to extreme weather conditions (e.g., prolonged heavy rain, direct sunlight, or snow accumulation) to maximize its lifespan.

5. TROUBLESHOOTING

If you encounter issues with your Sercomm OC835-V2 camera, refer to the following common troubleshooting steps:

- **No Power/Camera Not Turning On:**

- Verify that the power adapter is securely connected to both the camera and a working electrical outlet.
- Check if the outlet is receiving power by plugging in another device.

- **No Video Feed/Offline Status:**

- Ensure the camera is powered on.
- Check your Wi-Fi router to confirm it is operational and broadcasting a signal.
- Confirm the camera is within range of your Wi-Fi network. Obstacles like thick walls can interfere with the signal.
- Restart the camera by unplugging it from the power source for 10 seconds and then plugging it back in.
- Check your ADT Pulse app or web portal for any system alerts or camera status indicators.
- If the issue persists, you may need to re-add the camera to your ADT Pulse system following the setup instructions.

- **Poor Video Quality:**

- Ensure the camera lens is clean and free from dust or smudges.
- Check your Wi-Fi signal strength. A weak signal can lead to degraded video quality. Consider relocating the

camera or your Wi-Fi router.

- Verify that your internet connection is stable and has sufficient bandwidth.

For further assistance, contact ADT Pulse support or refer to their online resources.

6. SPECIFICATIONS

Feature	Detail
Brand	Sercomm
Model Name	ADT PULSE OC835
Item Model Number	OC835-V3
ASIN	B0763V5Y5F
Colour	Black
Material	Crystal
Item Dimensions L x W x H	10.2 x 10.2 x 10.2 Centimetres
Product Dimensions	10.16 x 10.16 x 10.16 cm; 363 g
Item Weight	363 g
Power Source	Corded Electric
Wattage	3.65 watts
Connectivity Technology	Wireless
Wireless Communication Technology	Wi-Fi
Connectivity Protocol	Wi-Fi
Video Capture Resolution	720p
Indoor/Outdoor Usage	Indoor, Outdoor
Special Features	Unlimited 30 day recordings for 30 days with ADT Pulse, Weather Proof
Form Factor	Turret
Mounting Type	Desktop or mounted with screws
Type of Bulb	Infrared
Number of Items	1
Included Components	1
Number of Channels	1
Controller Type	Iris
Batteries Included?	No

Feature	Detail
Batteries Required?	No
Date First Available	Oct. 5 2017

7. WARRANTY INFORMATION

Specific warranty terms and conditions for the Sercomm OC835-V2 camera are typically provided by the original seller or manufacturer at the time of purchase. Please refer to your purchase documentation or contact the retailer/manufacturer directly for detailed warranty coverage, duration, and claim procedures.





8. SUPPORT

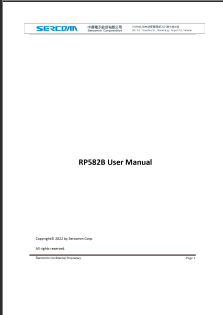

For technical support, troubleshooting assistance beyond this manual, or inquiries regarding your ADT Pulse system integration, please contact ADT Pulse customer support. You can typically find their contact information on the ADT Pulse website or within your ADT Pulse app.
Manufacturer: Sercomm



© 2024 Sercomm. All rights reserved. ADT Pulse is a registered trademark of ADT LLC.

Related Documents - OC835-V3

	<p>FCC Test Report for Sercomm DOCSIS 3.1 WiFi 6 Gateway DG4244</p> <p>Official FCC test report for the Sercomm DOCSIS 3.1 WiFi 6 Gateway (Model DG4244), detailing compliance testing for WLAN operations under FCC Part 15, Subpart E. Includes test results, product specifications, and applicable standards.</p>
	<p>RP362M WiFi Extender Quick Start Guide</p> <p>A quick start guide for the RP362M WiFi Extender, detailing its features, setup process via WPS and web browser, and regulatory information.</p>
	<p>Sercomm Speedport Plus Installation Manual</p> <p>This manual provides step-by-step instructions for installing and setting up the Sercomm Speedport Plus Wi-Fi router for internet and Magio TV services.</p>
	<p>Sercomm RP582B 802.11ax Router/Extender User Manual</p> <p>User manual for the Sercomm RP582B 802.11ax router/extender, providing setup instructions, LED behavior explanations, and important regulatory compliance information from FCC and Industry Canada.</p>

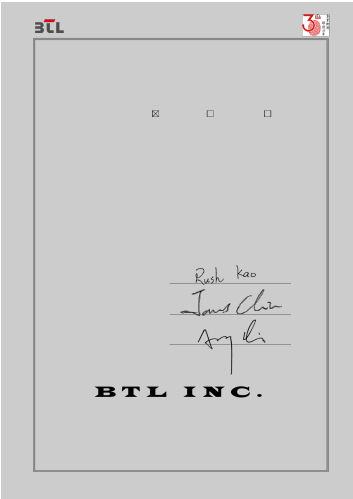
	<p>Sercomm RP582B 802.11ax Router/Extender User Manual</p> <p>User manual for the Sercomm RP582B 802.11ax router and extender, detailing setup, LED behavior, device description, and regulatory compliance information from FCC and ISCED.</p>
	<p>DG4244 DOCSIS 3.1 WiFi 6 Gateway Basic User Guide</p> <p>This guide provides essential information for setting up and using the DG4244 DOCSIS 3.1 PacketCable 1.5 WiFi 6 Gateway, including safety notices, installation instructions, and an overview of device features and settings.</p>

Documents - Sercomm – OC835-V3



[\[pdf\]](#) SAR Rating

Measurement Report Kent MPE Sercomm Corporation OC835V3 HD IP Camera P27OC835V3 oc835v3
FCC RF EXPOSURE REPORT FCC ID: P27OC835V3 Project No. : 1705042
Equipment : Waterproof HD IP Camera Model : **OC835-V3** Series Model : N/A
Applicant Address : Sercmm Corporation : 8F, No. Taiwan 3-1, 115 YuanQu St.,
NanKang, Taipei, According: : FCC Guidelines for Human Exposure IEEE C95...
lang:en score:28 filesize: 82.11 K page_count: 3 document date: 2017-07-31



[\[pdf\]](#) Declaration of Conformity Test Report

Measurement Report USER Test Sercomm Corporation OC835V3 HD IP Camera P27OC835V3 oc835v3
FCC Radio Test Report FCC ID: P27OC835V3 This report concerns check one :
Original Grant Class I Change Class II Change Project No. Equipment Test Model
Series Model Applicant Address : 1705042 : Waterproof HD IP Camera : **OC835-V3** :
N/A : Sercmm Corporation : 8F, No. 3-1, YuanQu St., NanKang, Tai...
lang:en score:24 filesize: 4.51 M page_count: 144 document date: 2017-08-03

RF_160_Issue 02

Declaration of Authorization

We
 Name: Sercomm Corporation
 Address: 1F, No. 3-1, Xuanfou St., NanKang,
 City: Taipei 115
 State: N/A
 Country: Taiwan

Declares that:
 Name Representative of agent: Mr. Kent Liu
 Agent Company name: STI Ltd.
 Address: 81, No. 37, Lane 365, YangGuang St., Neihu District 114
 City: Taipei
 Country: Taiwan

is authorized to apply for Certification and signing related documents of the following product(s), including 731 form(s):

Product description: Waterproof HD IP Camera
 Type designation: OC835-V3
 Trademark: ADT
 FCC ID: P27OC835V3

on our behalf:

Date: 2017-06-08
 City: Taipei
 Name: Nick Yiu
 Function: Engineer

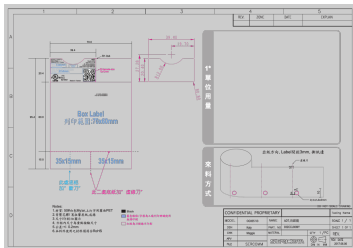
Signature: 

Notes:
 (1) Prepared for FCC application
 (2) For FCC it will be the licensee. Guide "license" on the authorized agent.

[\[pdf\]](#) Decleration of Conformity

Declaration of Authorization hbreevoort authorization Sercomm Corporation OC835V3 HD IP Camera P27OC835V3 oc835v3

RF_160, Issue 02 Declaration of Authorization We Name: Address: City: State: Country: Sercmm Corp ... g product s , including 731 form s : Product description: Waterproof HD IP Camera Type designation: **OC835-V3** Trademark: ADT FCC ID : P27OC835V3 on our behalf. Date: 2017-06-08 City: Taipei Name: ... lang:en score:20 filesize: 73.71 K page_count: 1 document date: 2017-06-12



[\[pdf\]](#) Label

932CCJ01MY ADT OC835 V3 20170606 ID Label Location Info Sercomm Corporation OC835V3 HD IP Camera P27OC835V3 oc835v3

Project No.: 1705042 Page 3 of 21 ...

lang:en score:14 filesize: 1.19 M page_count: 2 document date: 2017-08-03