

Jocel JMO001276

Jocel JMO001276 Microwave Oven Instruction Manual

Model: JMO001276

1. IMPORTANT SAFETY INSTRUCTIONS

Read all instructions carefully before using the appliance. Keep this manual for future reference.

- Do not attempt to operate this oven with the door open as this can result in harmful exposure to microwave energy.
- Do not place any object between the oven front face and the door or allow soil or cleaner residue to accumulate on sealing surfaces.
- Do not operate the oven if it is damaged. It is particularly important that the oven door closes properly and that there is no damage to the: (1) door (bent), (2) hinges and latches (broken or loosened), (3) door seals and sealing surfaces.
- The oven should not be adjusted or repaired by anyone except properly qualified service personnel.
- Ensure the appliance is properly grounded.
- Do not heat liquids or other foods in sealed containers since they are liable to explode.
- Always use oven mitts when handling hot items from the microwave.

2. PRODUCT OVERVIEW

Familiarize yourself with the components of your Jocel JMO001276 Microwave Oven.



Figure 2.1: Front view of the Jocel JMO001276 Microwave Oven, showing the control panel, door, and viewing window.

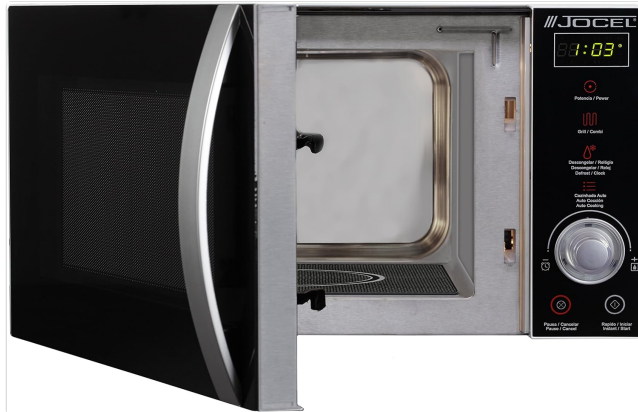


Figure 2.2: Interior view of the microwave oven with the door open, revealing the ceramic base and internal cavity.

Control Panel Features:

- **LED Display:** Shows time, power level, and program indicators.
- **Potencia / Power Button:** Adjusts microwave power levels.
- **Grill / Combi Button:** Selects grill or combination cooking modes.
- **Descongelar / Reloj (Defrost / Clock) Button:** Sets defrosting time or the current time.
- **Cozinhado Auto (Auto Cooking) Button:** Accesses pre-set cooking programs.
- **Rotary Knob:** Used to adjust time, weight, or select menu options.
- **Pausa / Cancelar (Pause / Cancel) Button:** Stops cooking or clears settings.
- **Rápido / Iniciar (Instant / Start) Button:** Starts cooking or adds quick cooking time.

3. SETUP

1. **Unpacking:** Carefully remove the microwave oven and all packing materials. Check for any damage. Do not operate if damaged.
2. **Placement:** Place the oven on a flat, stable surface. Ensure adequate ventilation by leaving at least 20 cm of space above the oven, 10 cm at the rear, and 5 cm on each side.
3. **Power Connection:** Plug the power cord into a properly grounded electrical outlet (230V, 50Hz).
4. **Initial Cleaning:** Wipe the interior and exterior surfaces with a damp cloth before first use.
5. **Setting the Clock:**
 - Press the 'Descongelar / Reloj' button once.
 - Turn the rotary knob to set the hour.

- Press 'Descongelar / Reloj' again.
- Turn the rotary knob to set the minutes.
- Press 'Descongelar / Reloj' to confirm.

4. OPERATING INSTRUCTIONS

4.1 Microwave Cooking

1. Place food in a microwave-safe container.
2. Close the oven door.
3. Press the 'Potencia / Power' button repeatedly to select the desired power level (e.g., P100 for 100% power).
4. Turn the rotary knob to set the cooking time.
5. Press 'Rápido / Iniciar' to start cooking.

4.2 Grill Cooking

1. Place food on the grill rack (if provided) in a heat-resistant dish.
2. Press the 'Grill / Combi' button once for grill mode.
3. Turn the rotary knob to set the grilling time.
4. Press 'Rápido / Iniciar' to start grilling.

4.3 Combination Cooking

This mode combines microwave and grill functions for faster cooking and browning.

1. Press the 'Grill / Combi' button multiple times to select the desired combination mode (e.g., C-1, C-2).
2. Turn the rotary knob to set the cooking time.
3. Press 'Rápido / Iniciar' to start.

4.4 Defrosting

The oven offers defrosting by weight or by time.

Defrost by Weight:

1. Press the 'Descongelar / Reloj' button twice.
2. Turn the rotary knob to select the food weight.
3. Press 'Rápido / Iniciar' to start.

Defrost by Time:

1. Press the 'Descongelar / Reloj' button three times.
2. Turn the rotary knob to set the defrosting time.
3. Press 'Rápido / Iniciar' to start.

4.5 Auto Cooking Programs

The oven has 8 pre-set auto cooking programs for common foods.

1. Press the 'Cozinhado Auto' button repeatedly to select the desired program (e.g., A-1 for popcorn, A-2 for

potato).

2. Turn the rotary knob to adjust the quantity or weight if applicable.
3. Press 'Rápido / Iniciar' to start.

5. MAINTENANCE AND CLEANING

Regular cleaning ensures optimal performance and extends the life of your microwave oven.

- **Exterior:** Wipe the exterior with a damp cloth and mild detergent. Avoid abrasive cleaners.
- **Interior:** Clean the interior cavity after each use. For stubborn stains, place a bowl of water with lemon juice inside and microwave for 2-3 minutes. This will loosen food particles, making them easier to wipe away.
- **Door Seals:** Keep the door seals and adjacent parts clean. Use a soft, damp cloth.
- **Ceramic Base:** The ceramic base should be wiped clean regularly. Do not use harsh chemicals or abrasive pads.
- **Grill Element:** For grill models, ensure the grill element is clean and free of food residue.
- **Power Off:** Always unplug the microwave oven before cleaning.

6. TROUBLESHOOTING

Refer to the table below for common issues and their solutions.

Problem	Possible Cause	Solution
Oven will not start	Power cord not plugged in; Door not closed properly; Fuse blown or circuit breaker tripped.	Plug into outlet; Close door securely; Replace fuse or reset circuit breaker.
Microwave output low	Incorrect power level selected.	Ensure 100% power (P100) is selected for full power cooking.
Food not cooking evenly	Food not stirred or rearranged; Incorrect cooking time/power.	Stir or rearrange food during cooking; Adjust time/power as needed.
Light not working	Bulb needs replacement.	Contact qualified service personnel for bulb replacement.

If the problem persists after attempting these solutions, please contact customer support.

7. SPECIFICATIONS

Technical details for the Jocel JMO001276 Microwave Oven.

Feature	Detail
Model Number	JMO001276
Brand	Jocel

Feature	Detail
Capacity	23 Liters
Microwave Power Output	1000 Watts
Voltage	230 Volts
Material	Ceramic (Base)
Color	Black
Dimensions (Package)	55.2 x 43.5 x 36.1 cm
Weight (Product)	12.6 kg
Features	Ceramic base, Grill and combination grill, 8 programs, LED display

8. WARRANTY AND SUPPORT

For warranty information and customer support, please refer to the warranty card included with your product or visit the official Jocel website. Keep your proof of purchase for any warranty claims.

In case of technical issues or questions not covered in this manual, please contact Jocel customer service.

Contact Information: Please refer to the contact details provided in your product packaging or on the official Jocel website.