

## PROFLO PFTPB100

# PROFLO PFTPB100 1-1/2" x 4" 17 Gauge Brass Flange Tailpiece

Instruction Manual

## INTRODUCTION

---

This manual provides essential information for the proper installation, maintenance, and care of your PROFLO PFTPB100 1-1/2" x 4" 17 Gauge Brass Flange Tailpiece. Please read all instructions carefully before beginning installation to ensure safe and correct operation.



Image: PROFLO brand logo, a blue oval with the word PROFLO in white text.

## SAFETY INFORMATION

---

- Always turn off the main water supply before beginning any plumbing work.
- Wear appropriate personal protective equipment, such as safety glasses and gloves.
- Ensure all connections are secure to prevent leaks.
- If you are unsure about any step, consult a qualified plumber.

## PACKAGE CONTENTS

---

Verify that all components are present before starting installation:

- 1 x PROFLO PFTPB100 1-1/2" x 4" 17 Gauge Brass Flange Tailpiece

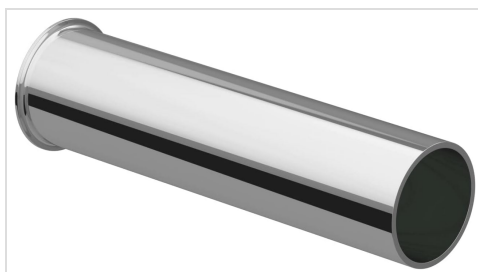


Image: A polished brass flange tailpiece, cylindrical in shape with a flared end, shown against a white background.



Image: An angled view of the PROFLO PFTPB100 brass flange tailpiece, highlighting its polished surface and the flared flange.

## SETUP AND INSTALLATION

---

This tailpiece is designed for connection to a sink drain and a P-trap assembly. Follow these general steps for installation:

1. **Prepare the Drain:** Ensure the sink drain opening is clean and free of debris.
2. **Apply Plumber's Putty (if applicable):** If your drain assembly requires it, apply a bead of plumber's putty around the underside of the drain flange that sits in the sink.
3. **Install Drain Assembly:** Insert the drain assembly into the sink opening. From underneath the sink, attach any necessary washers and nuts to secure the drain assembly.
4. **Connect Tailpiece:** Slide the large nut and washer (typically provided with the drain assembly or P-trap) onto the tailpiece. Insert the flared end of the tailpiece into the bottom of the drain assembly.
5. **Secure Connection:** Hand-tighten the nut onto the drain assembly. Use a wrench to tighten an additional quarter to half turn, being careful not to overtighten.
6. **Connect to P-Trap:** Connect the lower end of the tailpiece to your P-trap assembly using the appropriate slip nuts and washers. Ensure a tight, leak-free seal.
7. **Test for Leaks:** Turn on the water supply and run water through the sink drain, checking carefully for any leaks at all connections. Tighten connections slightly if leaks are observed.

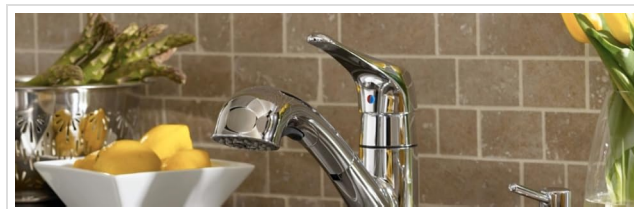


Image: A modern kitchen sink area with a chrome faucet, illustrating a typical environment where this tailpiece would be installed.

## OPERATING (FUNCTION)

---

The PROFLO PFTPB100 tailpiece serves as a critical connection between the sink drain assembly and the P-trap. Its function is passive, providing a sealed conduit for wastewater to flow from the sink into the drainage system, preventing leaks and ensuring proper plumbing function.

## MAINTENANCE

---

Regular maintenance helps ensure the longevity and proper function of your brass tailpiece:

- **Periodic Inspection:** Periodically inspect the tailpiece and its connections for any signs of leaks, corrosion, or damage.
- **Cleaning:** Clean the exterior of the tailpiece with a soft cloth and mild soap and water if necessary. Avoid abrasive cleaners or harsh chemicals, as these can damage the brass finish.

- **Check Connections:** If any minor drips are observed, gently tighten the slip nuts. Do not overtighten.

## TROUBLESHOOTING

---

Most issues related to a tailpiece involve leaks. Here are common troubleshooting steps:

Problem	Possible Cause	Solution
Water leaking from connections	Loose nuts or worn washers	Gently tighten slip nuts. If leaks persist, disassemble, inspect washers for damage, and replace if necessary. Ensure washers are correctly seated.
Persistent drip after tightening	Cracked tailpiece or damaged threads	Inspect the tailpiece for visible cracks or damage. If damaged, the tailpiece will need to be replaced.
Slow drainage	Blockage in drain or P-trap	The tailpiece itself is unlikely to cause a blockage unless severely corroded internally. Check the sink stopper, drain assembly, and P-trap for clogs.

## SPECIFICATIONS

---

Key specifications for the PROFLO PFTPB100 Tailpiece:

- **Model Number:** PFTPB100
- **Connection Size:** 1.5 inches
- **Length:** 4 inches
- **Material:** Brass
- **Gauge:** 17 Gauge
- **Finish:** No Finish (Natural Brass)
- **Item Weight:** Approximately 4.2 ounces (0.26 Pounds)
- **Product Dimensions:** 1 x 1 x 1 inches (L x W x H)
- **UPC:** 781889075043
- **Manufacturer:** PROFLO
- **Date First Available:** May 4, 2017

## WARRANTY INFORMATION

---

For specific warranty details regarding your PROFLO PFTPB100 Tailpiece, please refer to the warranty documentation provided at the time of purchase or visit the official PROFLO website. Warranty terms typically cover manufacturing defects under normal use conditions.

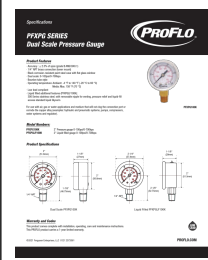
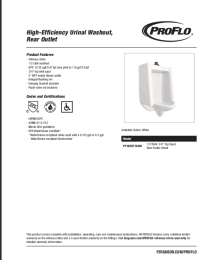
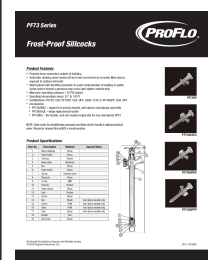
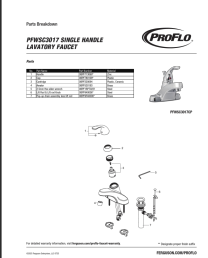
## SUPPORT

---

If you require further assistance or have questions not covered in this manual, please contact PROFLO customer support through their official channels. You can often find contact information on the PROFLO website or by visiting their store page:

[Visit the PROFLO Store on Amazon](#)

## Related Documents

	<p><a href="#">PROFLO PEXPG Series Dual Scale Pressure Gauge Specifications</a></p> <p>Detailed specifications for the PROFLO PEXPG Series dual scale pressure gauges, including features, model numbers, dimensions, and warranty information. Available in standard and liquid-filled versions.</p>
	<p><a href="#">PROFLO High-Efficiency Urinal Washout, Rear Outlet - Product Specifications</a></p> <p>Detailed specifications and features for the PROFLO High-Efficiency Urinal Washout, Rear Outlet, including dimensions, certifications, and model information.</p>
	<p><a href="#">PROFLO PF73 Series Frost-Proof Sillcocks - Specifications and Features</a></p> <p>Detailed specifications, features, and model information for PROFLO PF73 Series Frost-Proof Sillcocks, designed for reliable outdoor water connections.</p>
	<p><a href="#">PROFLO PFWSC3017 Single Handle Lavatory Faucet Parts Breakdown</a></p> <p>Detailed parts breakdown for the PROFLO PFWSC3017 single handle lavatory faucet, including part names, numbers, and materials. Features an exploded view diagram and warranty information.</p>


[\[pdf\]](#) Specifications Dimension Guide Warranty

PFTPB100 200series 2 Product SpecificationsMaster Distributor of Plumbing Lighting Connected Home Supplies for Wholesalers The Stock MarketPFTPB100specimage the stockmarket prodimages Proflo specs PFTPB100spec SpecificationsThis PROFLO product carries a 1 year limited warranty PFTPB100 200 Series in mm 2X4 FLANGED TAILPIECE 4 PFTPB200 SERIES SERIESMaster Marketproflo pftpb200 specification sheetproflo sheets1 img b build mediabase specifications proflo 1579444 sheetimage PFTPB100specs1 sheet SpecificationsSpecification SheetThis MarketPROFLO x 17 Gauge Brass Flange Tailpiece Ferguson Homeproflo pftpb100 1215013 |||

**PFTPB100 / 200 Series Flanged/Double Flanged Tailpiece PFTPB100** For Submittal Model Description **PFTPB100** 1-1/2X4 FLANGED TAILPIECE PFTPB101 1-1/2X6 FLANGED TAILPIECE PFTPB102 1-1/2X8 FLANGED TAILPIECE PFTPB103 1-1/2X12 FLANGED TAILPIECE PFTPB104 1-1/2X12 FLANGED TAILPIECE PFTPB105 1-1/2X4 FLAN...

lang:en **score:35** filesize: 407.74 K page\_count: 1 document date: 2011-04-27

**PFTPB100 / 200 Series**  
**Flanged/Double Flanged Tailpiece**



**Product Features**

- Diameter: 1-1/2" OD
- Construction: Brass
- End Connection: Flange / Double Flange
- Used with kitchen, laundry, or bathroom sinks and drains for all drain piping systems
- Meets ASME A112.18.2
- cUPC/IPC Listed

Part Number	Model	Description	Dimensions	Weight	Finish
PFTPB100	1-1/2" x 4"	1-1/2" x 4" Flanged Tailpiece	1-1/2" x 4"	0.25 lb	Brass
PFTPB101	1-1/2" x 6"	1-1/2" x 6" Flanged Tailpiece	1-1/2" x 6"	0.35 lb	Brass
PFTPB102	1-1/2" x 8"	1-1/2" x 8" Flanged Tailpiece	1-1/2" x 8"	0.45 lb	Brass
PFTPB103	1-1/2" x 12"	1-1/2" x 12" Flanged Tailpiece	1-1/2" x 12"	0.65 lb	Brass
PFTPB104	1-1/2" x 12"	1-1/2" x 12" Double Flanged Tailpiece	1-1/2" x 12"	0.65 lb	Brass
PFTPB105	1-1/2" x 4"	1-1/2" x 4" Double Flanged Tailpiece	1-1/2" x 4"	0.25 lb	Brass

**Warranty and Order**  
This PROFLO product carries a 1-year limited warranty.


[\[pdf\]](#) Specifications Dimension Guide

PFTPB100 200 series spec 20211103 Queryapi ferguson dar step service Query ASSET ID 11373401 USE TYPE SPECIFICATION PRODUCT 4055955 |||

Speci cations **PFTPB100 / 200 SERIES FLANGED/DOUBLE FLANGED TAILPIECE** Product Features Diameter: 1-1/2 OD Constructed from brass End Connection Type: Flanged / Double Flanged Used with kitchen, laundry, or bathroom sinks and More For use as a drain piping tailpiece Meets ASME A112.18.2 cUPC/...

lang:en **score:31** filesize: 826.01 K page\_count: 1 document date: 2023-06-14

**PFTPB100 / 200 SERIES**  
**FLANGED/DOUBLE FLANGED TAILPIECE**



**Product Features**

- Diameter: 1-1/2" OD
- Construction: Brass
- End Connection: Flange / Double Flange
- Used with kitchen, laundry, or bathroom sinks and drains for all drain piping systems
- Meets ASME A112.18.2
- cUPC/IPC Listed

Part Number	Model	Description	Dimensions	Weight	Finish	ASME
PFTPB100	1-1/2" x 4"	1-1/2" x 4" Flanged Tailpiece	1-1/2" x 4"	0.25 lb	Brass	A
PFTPB101	1-1/2" x 6"	1-1/2" x 6" Flanged Tailpiece	1-1/2" x 6"	0.35 lb	Brass	A
PFTPB102	1-1/2" x 8"	1-1/2" x 8" Flanged Tailpiece	1-1/2" x 8"	0.45 lb	Brass	A
PFTPB103	1-1/2" x 12"	1-1/2" x 12" Flanged Tailpiece	1-1/2" x 12"	0.65 lb	Brass	A
PFTPB104	1-1/2" x 12"	1-1/2" x 12" Double Flanged Tailpiece	1-1/2" x 12"	0.65 lb	Brass	A
PFTPB105	1-1/2" x 4"	1-1/2" x 4" Double Flanged Tailpiece	1-1/2" x 4"	0.25 lb	Brass	A

**Warranty and Order**  
This PROFLO product carries a 1-year limited warranty. This product meets ASME A112.18.2.


[\[pdf\]](#) Specifications Dimension Guide

PFTPB100 200 series spec 20211103 SPECIFICATION 1 2 x 8 in Brass Flanged Tailpiece PROFLO® Ferguson 4055928 11373401 specification fergusonprod a bigcontent io v1 static |||

Speci cations **PFTPB100 / 200 SERIES FLANGED/DOUBLE FLANGED TAILPIECE** Product Features Diameter: 1-1/2 OD Constructed from brass End Connection Type: Flanged / Double Flanged Used with kitchen, laundry, or bathroom sinks and More For use as a drain piping tailpiece Meets ASME A112.18.2 cUPC/...

lang:en **score:31** filesize: 826.01 K page\_count: 1 document date: 2023-06-14

**PFTPB100 / 200 SERIES**  
**FLANGED/DOUBLE FLANGED TAILPIECE**



**Product Features**

- Diameter: 1-1/2" OD
- Construction: Brass
- End Connection: Flange / Double Flange
- Used with kitchen, laundry, or bathroom sinks and drains for all drain piping systems
- Meets ASME A112.18.2
- cUPC/IPC Listed

Part Number	Model	Description	Dimensions	Weight	Finish	ASME
PFTPB100	1-1/2" x 4"	1-1/2" x 4" Flanged Tailpiece	1-1/2" x 4"	0.25 lb	Brass	A
PFTPB101	1-1/2" x 6"	1-1/2" x 6" Flanged Tailpiece	1-1/2" x 6"	0.35 lb	Brass	A
PFTPB102	1-1/2" x 8"	1-1/2" x 8" Flanged Tailpiece	1-1/2" x 8"	0.45 lb	Brass	A
PFTPB103	1-1/2" x 12"	1-1/2" x 12" Flanged Tailpiece	1-1/2" x 12"	0.65 lb	Brass	A
PFTPB104	1-1/2" x 12"	1-1/2" x 12" Double Flanged Tailpiece	1-1/2" x 12"	0.65 lb	Brass	A
PFTPB105	1-1/2" x 4"	1-1/2" x 4" Double Flanged Tailpiece	1-1/2" x 4"	0.25 lb	Brass	A

**Warranty and Order**  
This PROFLO product carries a 1-year limited warranty. This product meets ASME A112.18.2.