

BNT BNT-1080420AK410-N0

BNT AHD Security Camera System User Manual

Model: BNT-1080420AK410-N0

1. INTRODUCTION

This manual provides detailed instructions for the installation, operation, and maintenance of your BNT AHD Security Camera System, Model BNT-1080420AK410-N0. Please read this manual thoroughly before using the product to ensure proper functionality and safety.



Figure 1: BNT AHD Security Camera System overview, showing the 11-inch monitor and two bullet cameras.

2. PACKAGE CONTENTS

Verify that all items listed below are included in your package. If any items are missing or damaged, please contact customer support.

- 1x 11-inch AHD Monitor/DVR
- 2x AHD Bullet Cameras
- 2x BNC Video/Power Cables
- 1x DVR Power Adapter
- 1x Camera Power Adapter (with splitter)
- 1x USB Mouse
- 1x Remote Control
- Mounting Screws and Anchors
- User Manual and Warranty Card



Figure 2: All components included in the BNT AHD Security Camera System package, laid out for inspection.

3. PRODUCT OVERVIEW

3.1 Monitor/DVR Unit

The main unit features an integrated 11-inch HD LCD screen for direct viewing. The rear panel provides various ports for connectivity.



Figure 3: Rear view of the BNT monitor/DVR unit, highlighting input/output ports for cameras, audio, HDMI, USB, and Ethernet. Also shows camera dimensions.

3.2 Camera Features

- **1080p Resolution:** Provides clear video capture.
- **Day/Night Vision:** Automatic switching for continuous surveillance.
- **IP67 Weatherproof Rating:** Suitable for outdoor installation, protected against dust and temporary immersion in water.

4. SETUP AND INSTALLATION

4.1 Physical Connections

1. **Connect Cameras:** Connect each camera to the DVR using the provided BNC video/power cables. Ensure secure connections.
2. **Power Cameras:** Connect the camera power adapter to a power outlet and then to the camera power splitter, which connects to each camera.
3. **Power DVR:** Connect the DVR power adapter to the DVR and then to a power outlet.

4. **Optional: Connect to Router:** For remote viewing, connect the DVR to your internet router using an Ethernet cable.
5. **Optional: External Monitor:** If desired, connect an external monitor or TV to the DVR via the HDMI port.

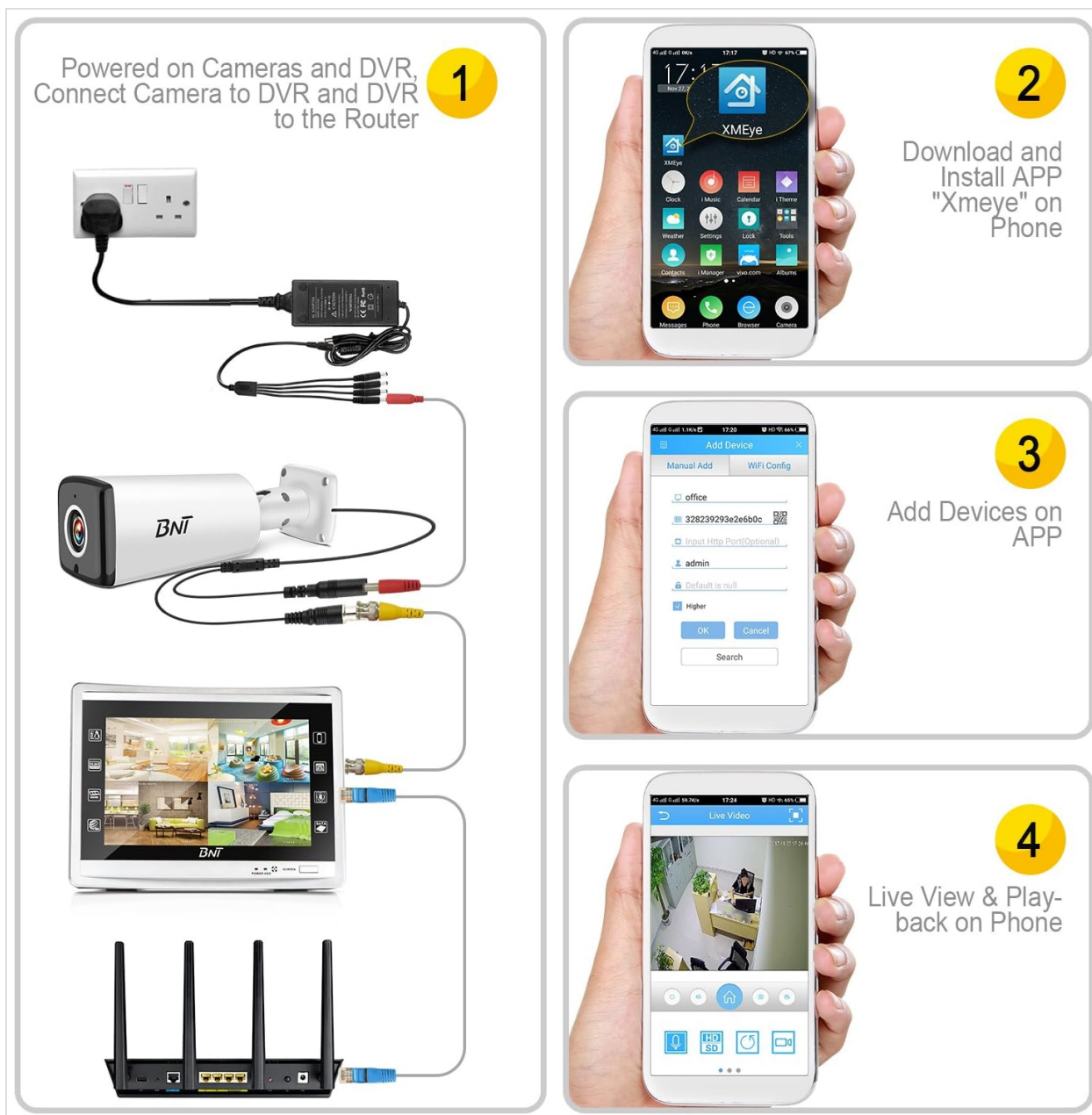


Figure 4: Step-by-step connection diagram illustrating how to connect cameras to the DVR, power supplies, and an optional router for network access.

4.2 Mobile App Setup (XMEye)

To enable remote viewing and playback on your smartphone, follow these steps:

1. **Download App:** Search for and download the "XMEye" application from your phone's app store (Google Play Store for Android, Apple App Store for iOS).
2. **Install and Register:** Install the app and follow the on-screen instructions to register an account.
3. **Add Device:** Open the app, select "Add Device," and scan the QR code displayed on your DVR's screen or manually enter the device ID.
4. **Live View & Playback:** Once the device is added, you can access live camera feeds and review recorded footage from your smartphone.



Figure 5: Visual guide for setting up the XMEye mobile application, including downloading, adding devices, and accessing live view.

5. OPERATION

5.1 Live Viewing

After successful setup, the monitor will display live feeds from all connected cameras. You can switch between single-camera view and multi-camera grid view using the DVR controls or remote.

5.2 Recording and Playback

The DVR continuously records footage. To review recordings, access the playback function through the DVR's menu system. You can search by date and time.

5.3 Motion Detection and Alerts

The system supports motion detection. When motion is detected, the system can trigger recording, send email alerts, or push notifications to your mobile app.



Built-in 11" HD LCD Screen

also support to connect a
HD TV/PC Monitor via HDMI port



Figure 6: A smartphone screen showing a notification for a motion detection event, indicating the system's alert capabilities.

5.4 Day/Night Vision

The cameras automatically switch between day (color) and night (infrared black and white) modes based on ambient light conditions, ensuring 24/7 surveillance.

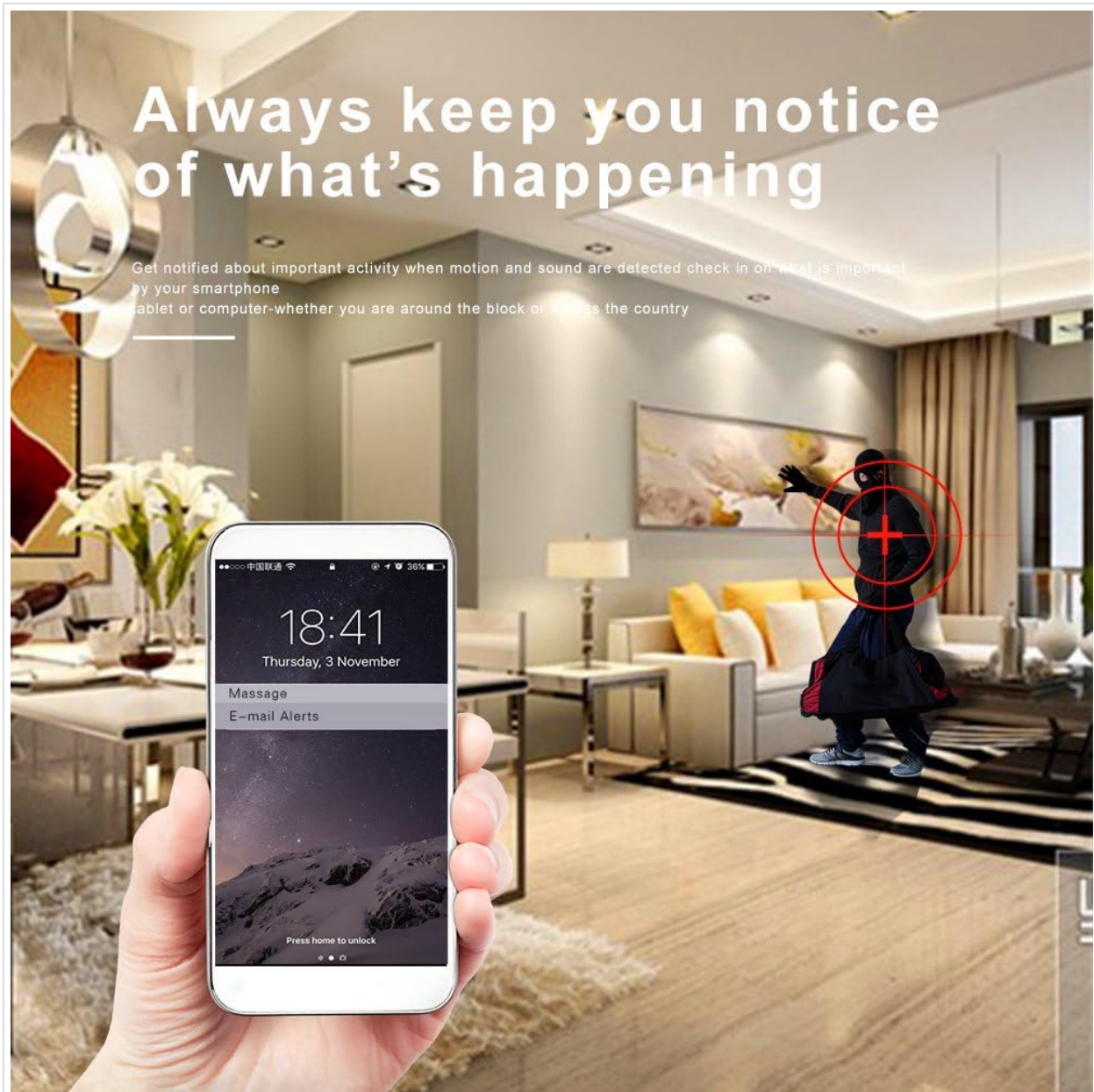


Figure 7: Illustrates the camera's ability to provide clear images in both day and night conditions, and highlights its IP67 weatherproof rating for outdoor use.

6. MAINTENANCE

Regular maintenance ensures optimal performance and longevity of your security system.

- **Clean Lenses:** Periodically clean camera lenses with a soft, dry cloth to remove dust and smudges.
- **Check Connections:** Ensure all cables (power, video, network) are securely connected and free from damage.
- **Software Updates:** Check the manufacturer's website for any available firmware updates for the DVR.
- **Power Cycle:** If experiencing minor issues, try power cycling the DVR by unplugging it for 30 seconds and then plugging it back in.

7. TROUBLESHOOTING

Refer to the following common issues and solutions before contacting technical support.

- **No Image on Screen:**

- Ensure all cameras and the DVR are powered on.
- Check video cable connections between cameras and DVR.
- Verify the monitor input source if using an external display.

- **No Recording:**

- Check if a hard drive is installed and properly initialized in the DVR settings.
- Ensure recording schedules are correctly configured.

- **Remote Access Not Working:**

- Verify the DVR is connected to the internet via Ethernet.
- Check network settings on the DVR and your router.
- Ensure the XMEye app is correctly configured with the device ID.

- **Poor Image Quality:**

- Clean camera lenses.
- Ensure cameras are within their optimal operating range.
- Check cable integrity for any damage or interference.

8. SPECIFICATIONS

Brand	BNT
Model Number	BNT-1080420AK410-N0
Connectivity Technology	Ethernet, HDMI, Infrared, USB
Video Capture Resolution	1080p
Number of Channels	4
Product Dimensions	35.48 x 35 x 19.3 cm; 4.47 kg
Manufacturer	BNT SAFE CCTV

9. WARRANTY AND SUPPORT

Your BNT AHD Security Camera System comes with a warranty. Please refer to the included warranty card for specific terms and conditions. For technical assistance or further inquiries, please contact BNT customer support through the contact information provided on your warranty card or the official BNT website.

	<p><u>BNT Solar Street Light User Manual - Installation and Operation Guide</u></p> <p>Comprehensive user manual for the BNT Solar Street Light (Model: BNT-SSL-XBJK-300W), covering essential instructions for charging, installation, product details, operation modes via remote control, and warranty information. Learn how to safely and effectively use your solar-powered outdoor lighting solution.</p>
	<p><u>BNT Solar Dummy Security Camera User Manual</u></p> <p>User manual for the BNT Solar Dummy Security Camera (model IR-2600SW), detailing product information, installation tips, attention points, and customer service.</p>
	<p><u>BNT Solar Street Light User Manual and Specifications</u></p> <p>Comprehensive user manual and specifications for the BNT S-3000B Solar Street Light, covering installation, operation, remote control functions, and technical details.</p>
	<p><u>BNT Solar Street Light User Manual</u></p> <p>User manual for the BNT Solar Street Light, covering installation, operation, and features. Includes remote control functions and warranty information.</p>
	<p><u>Standalone Metal RFID Series Installation & User Guide</u></p> <p>This guide provides comprehensive instructions for installing and using the Standalone Metal RFID Series access control system. It covers equipment installation, system structure and functions, lock connection, connecting other devices, power connection, user management (administrator operations, adding/deleting users, authentication), access control management (unlocking duration, authentication modes, concealed mode, door sensor, alarms), switching working modes, and factory default restoration.</p>
	<p><u>GANZ ZC-BT/BX 8000 Series Outdoor Color Camera Instruction Manual</u></p> <p>Comprehensive instruction manual for the GANZ ZC-BT/BX 8000 Series outdoor color cameras, covering installation, part descriptions, model specifications, product features, safety precautions, and OSD menu settings.</p>