

Kaiser MSA-7915L

Kaiser MSA-7915L Professional 15-inch Wireless Amplified Speaker Kit

USER MANUAL

Introduction

This manual provides detailed instructions for the safe and efficient operation of your Kaiser MSA-7915L Professional 15-inch Wireless Amplified Speaker Kit. Please read this manual thoroughly before using the product and retain it for future reference. This speaker system is designed for professional audio applications, offering powerful sound, versatile connectivity, and portability.

Safety Instructions

- Do not expose the unit to rain or moisture to prevent fire or electric shock.
- Do not open the speaker cabinet. There are no user-serviceable parts inside. Refer all servicing to qualified personnel.
- Ensure proper ventilation. Do not block ventilation openings.
- Place the speaker on a stable, level surface or a compatible speaker stand.
- Keep the unit away from heat sources, direct sunlight, and excessive dust.
- Use only the power adapter supplied with the unit.
- Unplug the unit during lightning storms or when unused for long periods.

Package Contents

Verify that all items are present in the package:

- Kaiser MSA-7915L Amplified Speaker Unit
- Two Wireless Microphones
- Remote Control
- Power Cable / Battery Charging Adapter
- User Manual (this document)

Product Overview



Figure 1: Main Speaker Unit. This image displays the front of the Kaiser MSA-7915L speaker, featuring a large 15-inch woofer with a red accent ring and multicolor LED lighting. The rear panel is also visible, showcasing the comprehensive control interface, including knobs for volume, bass, treble, microphone inputs, USB/SD ports, and RCA inputs.



Figure 2: Wireless Microphones. Two wireless microphones are included with the speaker kit, designed for clear vocal reproduction and freedom of movement during performances or presentations. They feature a black finish with subtle red accents.

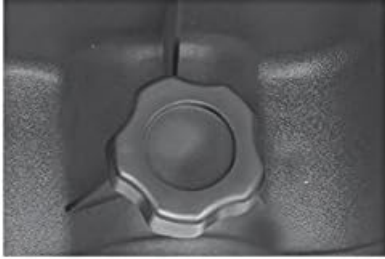


Figure 3: Top Handle and Stand Knob. This image highlights the retractable top handle for easy pulling, similar to luggage. Below it, a large black knob on the rear panel is shown, used to securely fasten the speaker onto a compatible speaker stand.



Figure 4: Side Handle and Wheels. The image shows a sturdy side handle integrated into the speaker's casing, providing an additional grip point for lifting. Below the handle, one of the durable wheels is visible, facilitating easy transport of the speaker.

Control Panel (Refer to Figure 1, Rear Panel)

1. **Display Screen:** Shows current mode, track number, and FM frequency.
2. **USB Port:** For playing audio files from USB drives.

3. **SD Card Slot:** For playing audio files from SD cards.
4. **Mode Button:** Switches between Bluetooth, USB, SD, FM Radio, and AUX modes.
5. **Play/Pause Button:** Controls playback for USB/SD/Bluetooth.
6. **Previous/Next Buttons:** Navigates tracks or FM stations.
7. **Master Volume:** Adjusts the overall output volume.
8. **Bass/Treble Controls:** Adjusts low and high frequencies.
9. **Microphone Inputs (6.3mm):** Connect wired microphones.
10. **Microphone Volume/Echo:** Adjusts volume and echo effect for microphones.
11. **RCA Input (L/R):** Connect external audio devices via RCA cables.
12. **External Battery Terminals:** For connecting an external 12V battery.
13. **Power Switch:** Turns the unit On/Off.
14. **AC Power Input:** Connects the power cable for charging and operation.
15. **Battery Status LEDs:** Indicates the charge level of the internal battery.

Setup

1. **Unpacking:** Carefully remove the speaker and all accessories from the packaging. Retain the packaging for future transport or storage.
2. **Charging the Battery:**
 - Before first use, fully charge the internal battery. Connect the supplied power cable to the AC Power Input on the rear panel and plug it into a standard electrical outlet.
 - The Battery Status LEDs will indicate charging progress. The unit is fully charged when all LEDs are lit or the charging indicator changes.
 - A full charge typically takes several hours. The battery provides up to 5 hours of continuous music playback.
3. **Connecting an External Battery (Optional):**
 - For extended use, you can connect an external 12V battery to the External Battery Terminals on the rear panel. Ensure correct polarity (+ to + and - to -).
4. **Mounting on a Stand (Optional):**
 - The speaker features a rear knob for securing it to a compatible speaker stand. Place the speaker onto the stand's pole and tighten the knob firmly to ensure stability.

Operating Instructions

1. Power On/Off

Flip the Power Switch on the rear panel to the "ON" position to turn on the speaker. Flip it to "OFF" to power down the unit.

2. Bluetooth Connection

1. Turn on the speaker. The display will show the current mode.
2. Press the "Mode" button until "Bluetooth" or "BT" appears on the display.
3. Enable Bluetooth on your mobile device (smartphone, tablet, etc.).
4. Search for available devices and select "Kaiser MSA-7915L" (or similar name).
5. Once paired, you will hear a confirmation tone, and you can now play audio wirelessly. The Bluetooth range is up to

30 meters (100 feet) in open areas.

3. USB/SD Playback

1. Insert a USB drive or SD card (pre-loaded with MP3 audio files) into the respective port/slot.
2. The speaker should automatically switch to USB or SD mode and begin playback. If not, press the "Mode" button to select the correct source.
3. Use the Play/Pause and Previous/Next buttons to control playback.

4. FM Radio

1. Press the "Mode" button until "FM" appears on the display.
2. Press and hold the Play/Pause button to initiate an automatic scan for FM stations. The speaker will save all found stations.
3. Use the Previous/Next buttons to navigate through the saved stations.

5. AUX/RCA Input

1. Connect an external audio device (e.g., CD player, mixer) to the RCA Input using an RCA cable.
2. Press the "Mode" button to select "AUX" or "LINE" mode.
3. Play audio from your connected device.

6. Microphone Usage

1. **Wireless Microphones:** Ensure the wireless microphones (Figure 2) have fresh batteries and are powered on. They should automatically connect to the speaker. Adjust their volume using the Microphone Volume knob on the rear panel.
2. **Wired Microphones:** Connect wired microphones to the 6.3mm Microphone Inputs. Adjust their volume and echo effect using the dedicated controls.

7. Audio Adjustment

Use the Master Volume, Bass, and Treble knobs on the rear panel to fine-tune the overall sound output to your preference.

8. Multicolor Light

The speaker features a multicolor light around the woofer. This light typically activates automatically with music playback or can be controlled via the remote control (if a dedicated button is present).

9. Remote Control

The included remote control allows for convenient operation of various functions from a distance, including mode selection, volume adjustment, track navigation, and playback control.

Maintenance

- **Cleaning:** Use a soft, dry cloth to clean the exterior of the speaker. Do not use abrasive cleaners, waxes, or solvents.
- **Battery Care:** To prolong battery life, fully charge the speaker before storing it for extended periods. Recharge the battery every 3-6 months even if not in use. Avoid completely draining the battery frequently.
- **Storage:** Store the speaker in a cool, dry place, away from direct sunlight and extreme temperatures.
- **Transport:** Utilize the integrated handles (Figure 3 & 4) and wheels for easy and safe transport of the unit.

Troubleshooting

Problem	Possible Cause	Solution
No power	Power cable not connected; Battery drained; Power switch off.	Ensure power cable is securely connected and plugged in. Charge the battery. Turn the power switch to "ON".
No sound output	Volume too low; Incorrect input mode selected; Device not connected properly.	Increase Master Volume. Press "Mode" to select the correct input. Check all cable connections.
Bluetooth not pairing	Speaker not in Bluetooth mode; Device too far; Bluetooth disabled on device.	Ensure speaker is in Bluetooth mode. Move device closer. Enable Bluetooth on your device and re-scan.
Wireless microphone not working	Microphone batteries low/dead; Microphone not powered on; Microphone volume too low.	Replace microphone batteries. Turn on the microphone. Increase Microphone Volume on the speaker.
USB/SD playback issues	Unsupported file format; Corrupt files; USB/SD not inserted correctly.	Ensure files are in MP3 format. Try a different USB/SD card. Reinsert the USB/SD card.

Specifications

Model	MSA-7915L
Audio Power Output	12000W PMPO / 100W RMS
Woofer Size	15 inches (38.1 cm)
Connectivity	Bluetooth (up to 30m range), USB, SD, FM Radio, RCA Input, 6.3mm Microphone Inputs
Impedance	4 Ohms
Power Source	Rechargeable Internal Battery, AC Power, External 12V Battery Terminals
Battery Life	Up to 5 hours (continuous music playback)
Special Features	Multicolor Light, Wireless Microphones, Remote Control, Portable Design (handles & wheels)
Dimensions (L x W x H)	48 x 74 x 40 cm
Weight	17 kg

Warranty and Support

Kaiser products are manufactured to high-quality standards. For information regarding warranty coverage, service, or technical support, please refer to the warranty card included with your product or visit the official Kaiser website. Keep your purchase receipt as proof of purchase.

For further assistance, you may contact Kaiser customer support through their official channels. Please have your model number (MSA-7915L) and purchase details ready.

