



Manuals.plus /

- › [LELO](#) /
- › [LELO SONA Cruise Suction Vibrator User Manual](#)

## LELO SONA Cruise (Model 6041)

# LELO SONA Cruise Suction Vibrator User Manual

Model: SONA Cruise (Model 6041) | Brand: LELO

### PRODUCT OVERVIEW

The LELO SONA Cruise is an innovative sonic clitoral massager designed for enhanced pleasure. It utilizes sonic waves rather than traditional vibrations to deliver deep and resonant sensations. Featuring revolutionary Cruise Control technology, it maintains consistent power for uninterrupted pleasure. The device is crafted from extra-soft, body-safe silicone and is fully waterproof, allowing for versatile use.



Image: The LELO SONA Cruise device in cerise, showcasing its sleek design and the accompanying product packaging.

### Key Features:

- **Sensonic Technology:** Deep and gentle sonic wave stimulation for a unique sensation.
- **Cruise Control:** Automatically maintains consistent intensity during use, preventing power drops.
- **8 Pleasure Settings:** A range of intensities from a gentle murmur to a satisfying pulse.
- **Extra-Soft Silicone:** Made from ultra-smooth, premium body-safe silicone for comfort.
- **Waterproof Design:** Fully submersible for use in the bath or shower, and easy cleaning.
- **Long-Lasting Charge:** Designed for extended periods of use on a single charge.



Image: An infographic highlighting the core features of the SONA Cruise, including its sonic technology, multiple settings, and waterproof nature.

## SETUP

### What's Included:

**SONA™ Cruise**  
sonic clitoral massager



**MANUAL**  
how to use guide



**MOISTURIZER SACHET**  
water-based lubricant  
5 ml / 0.17 fl. oz.



**CHARGING CORD**  
USB cable



**WARRANTY CARD**  
verifies product authenticity

**SATIN POUCH**  
for storage

Image: A visual representation of all items included in the LELO SONA Cruise package, such as the device, charging cable, and accessories.

- LELO SONA Cruise device
- User Manual (this guide)
- Water-based lubricant sachet (5 ml / 0.17 fl. oz.)
- USB Charging Cable
- Warranty Card
- Satin Storage Pouch

**Initial Charge:**

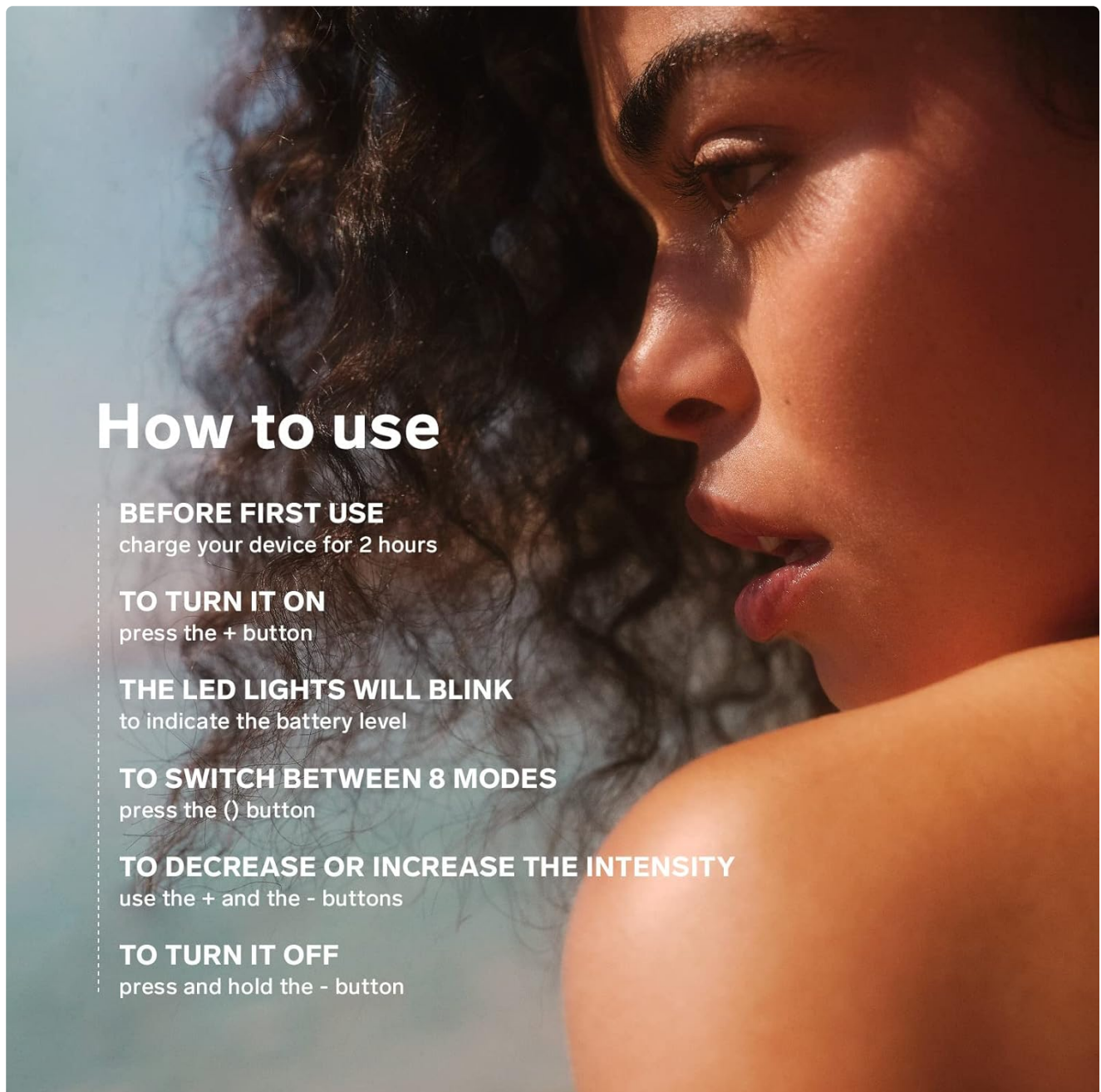
Before first use, fully charge your LELO SONA Cruise device for approximately 2 hours. The LED lights on the device will blink to indicate the battery level during charging and will glow steadily when fully charged.

To charge, connect the USB charging cable to the charging port on the device and plug the other end into a USB power source (e.g., computer, USB wall adapter).

## OPERATING INSTRUCTIONS

### Basic Operation:

- **To Turn It On:** Press the + button. The LED lights will blink to indicate the battery level.
- **To Switch Between 8 Modes:** Press the ( ) (circle/wave) button.
- **To Decrease or Increase the Intensity:** Use the + and the - buttons.
- **To Turn It Off:** Press and hold the - button.



# How to use

## BEFORE FIRST USE

charge your device for 2 hours

## TO TURN IT ON

press the + button

## THE LED LIGHTS WILL BLINK

to indicate the battery level

## TO SWITCH BETWEEN 8 MODES

press the ( ) button

## TO DECREASE OR INCREASE THE INTENSITY

use the + and the - buttons

## TO TURN IT OFF

press and hold the - button

Image: A guide illustrating the basic controls and functions of the LELO SONA Cruise device.

### Usage Guidance:

#### 1. Step 1: Prep

Add a liberal amount of LELO Personal Moisturizer (or any water-based lubricant) to your toy and body for the smoothest experience. This helps create a seal for optimal sonic wave transmission.



Illustration: Preparing the device with lubricant.

## 2. Step 2: Engage

Place the SONA Cruise's tip over – but not directly on – your clitoris. If direct contact feels too intense, position it next to your outer pleasure spot. Feel free to take a break if the intensity becomes too great.



Illustration: Proper placement of the device.

## 3. Step 3: Indulge

Experiment with the 8 pleasure settings and adjust the intensity using the + and - buttons to find what feels best for you. The indirect contact allows for prolonged use, potentially leading to multiple climaxes.



Illustration: Experiencing the sonic sensations.

## MAINTENANCE

### Cleaning:

The LELO SONA Cruise is fully waterproof, making cleaning simple. After each use, wash the device thoroughly with warm water and a toy cleaner or mild soap. Rinse well and pat dry with a lint-free cloth. Avoid using cleaners containing alcohol, petroleum, or acetone, as these can damage the silicone.

### Storage:

Store your LELO SONA Cruise in its provided satin pouch in a clean, dry place away from direct sunlight and extreme temperatures. Avoid storing it with other toys made of different materials to prevent potential damage or reactions.

### Charging:

Recharge the device as needed. A full charge takes approximately 2 hours and provides extended use. Do not overcharge the device by leaving it plugged in for excessively long periods after it is fully charged.

## TROUBLESHOOTING

| Problem                                | Possible Cause   | Solution  |
|--|--|---|
| Device does not turn on.               | Battery is depleted.                                     | Charge the device for 2 hours using the provided USB cable.   |
| Sensations are too weak or not felt.   | Incorrect placement or insufficient intensity setting.   | Ensure the tip is placed over (not directly on) the clitoris. Increase intensity using the + button. Apply water-based lubricant to create a better seal. |
| Device makes a "slurping" noise.       | Improper pressure or positioning.                        | Adjust the pressure and position of the device. The noise typically indicates too little or too much pressure. Find a firm but relaxed hold.              |
| Sensations are too intense or painful. | Intensity setting is too high or individual sensitivity. | Decrease the intensity using the - button. If discomfort persists, take a break and try again later at a lower setting or with indirect contact.          |

## SPECIFICATIONS

**Model Name:** SONA Cruise

**Model Number:** 6041

**Brand:** LELO

**Material:** Body-safe Silicone, ABS Plastic

**Color:** Cerise (as per current product)

**Dimensions:** 3.9 x 3.46 x 2.2 inches (111 x 55 x 50 mm)

**Weight:** 4.48 ounces (125 g)

**Battery:** 1 Lithium Polymer battery (included)

**Charging:** USB Rechargeable

**Waterproof:** Yes, fully submersible

**Settings:** 8 pleasure settings

## WARRANTY AND SUPPORT

### Warranty Information:

LELO offers a **1-year warranty** against manufacturing defects and a **10-year quality guarantee** for your SONA Cruise device. Please retain your proof of purchase for warranty claims. For detailed warranty terms and conditions, refer to the warranty card included in your package or visit the official LELO website.

### Customer Support:

For any questions, technical assistance, or support regarding your LELO SONA Cruise, please visit the official LELO website or contact their customer service directly. Contact details are typically available on the manufacturer's website or the product packaging.

Manufacturer: LELO