

## GROHE 29161LS0

# GROHE Grohtherm SmartControl Thermostatic Trim 29161LS0 User Manual

Model: 29161LS0 | Brand: GROHE

## INTRODUCTION

This manual provides detailed instructions for the installation, operation, and maintenance of your GROHE Grohtherm SmartControl Thermostatic Trim 29161LS0. Please read this manual thoroughly before installation and use to ensure proper function and longevity of your product.

## SETUP AND INSTALLATION

The GROHE Grohtherm SmartControl Thermostatic Trim is designed for concealed installation. **It is crucial that this product is installed in combination with the GROHE Rapid Smart Box (35601000), which is sold separately.** Professional installation is recommended due to the complexity of concealed plumbing systems.

### Key Installation Features:

- **GROHE QuickFix System:** Ensures swift and straightforward installation with covered escutcheon and shaft sealing, and covered fixing.
- **Angle Adjustable:** The metal wall escutcheon features slotted fixation holes, allowing the trim to be angle-adjusted up to 6 degrees. This provides a flexible solution if the rough-in is not perfectly level.
- **Slim Profile:** The 3/8" (10mm) thin profile escutcheon contributes to a minimalist and streamlined aesthetic.

## ANGLE ADJUSTABLE

GROHE



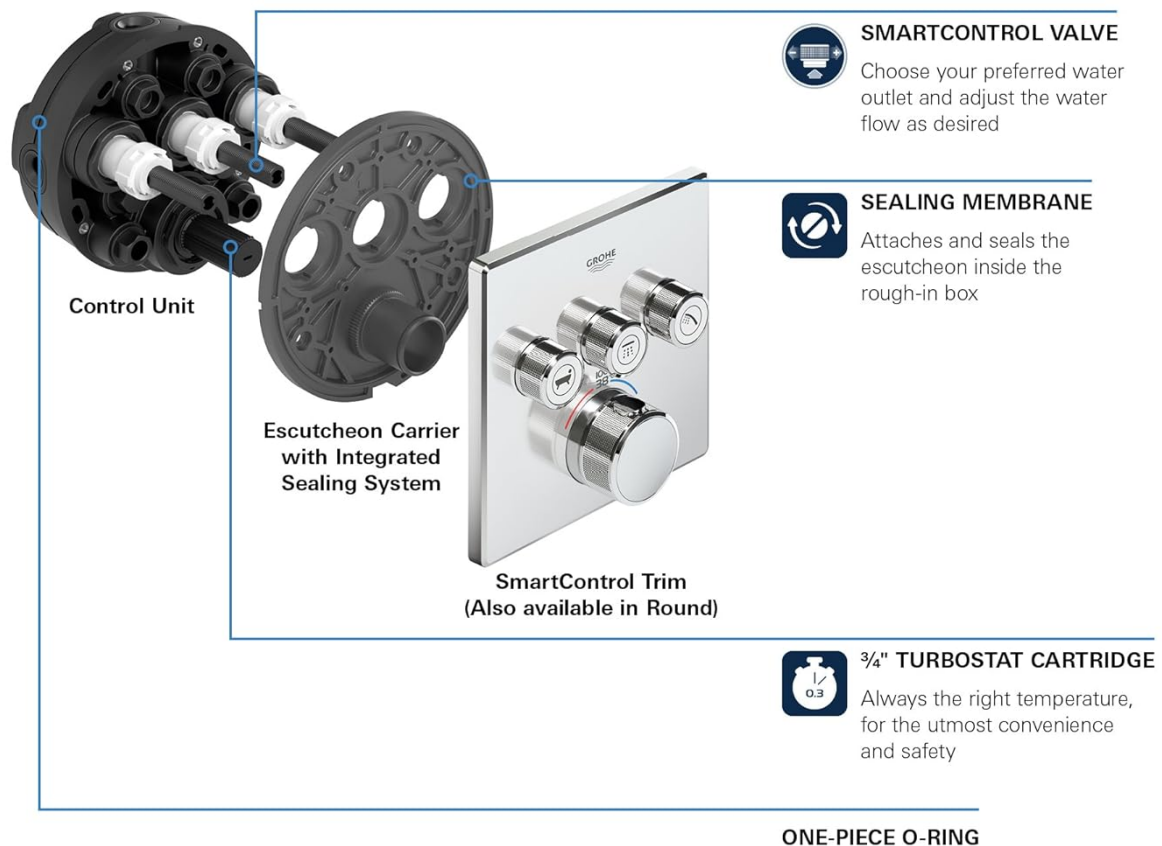
### Angle Adjustable Up To 6°

Slotted fixation holes in Escutcheon Carrier allow trim to be angle adjusted up to 6°

Easy solution for when rough is not completely level



**Figure 1: Angle Adjustable Escutcheon.** This image illustrates how the trim can be adjusted up to 6 degrees to compensate for uneven rough-in installations.



**Figure 2: Internal Components.** An exploded view showing the SmartControl Trim, Escutcheon Carrier with Integrated Sealing System, Control Unit, and the 3/4" Turbostat Cartridge.

## OPERATING INSTRUCTIONS

The Grohtherm SmartControl Thermostatic Trim offers intuitive control over your shower or bath experience.

### Temperature Control:

- The main central knob controls the water temperature. Rotate it to adjust the temperature to your preference.
- **GROHE Safe Stop:** For safety, the trim includes a safety button that limits the maximum temperature to 100°F (38°C) to prevent scalding. To exceed this temperature, press and hold the Safe Stop override button while rotating the knob further.
- **GROHE Turbostat Technology:** This integrated technology ensures constant water temperature, preventing unpleasant fluctuations during your shower or bath.

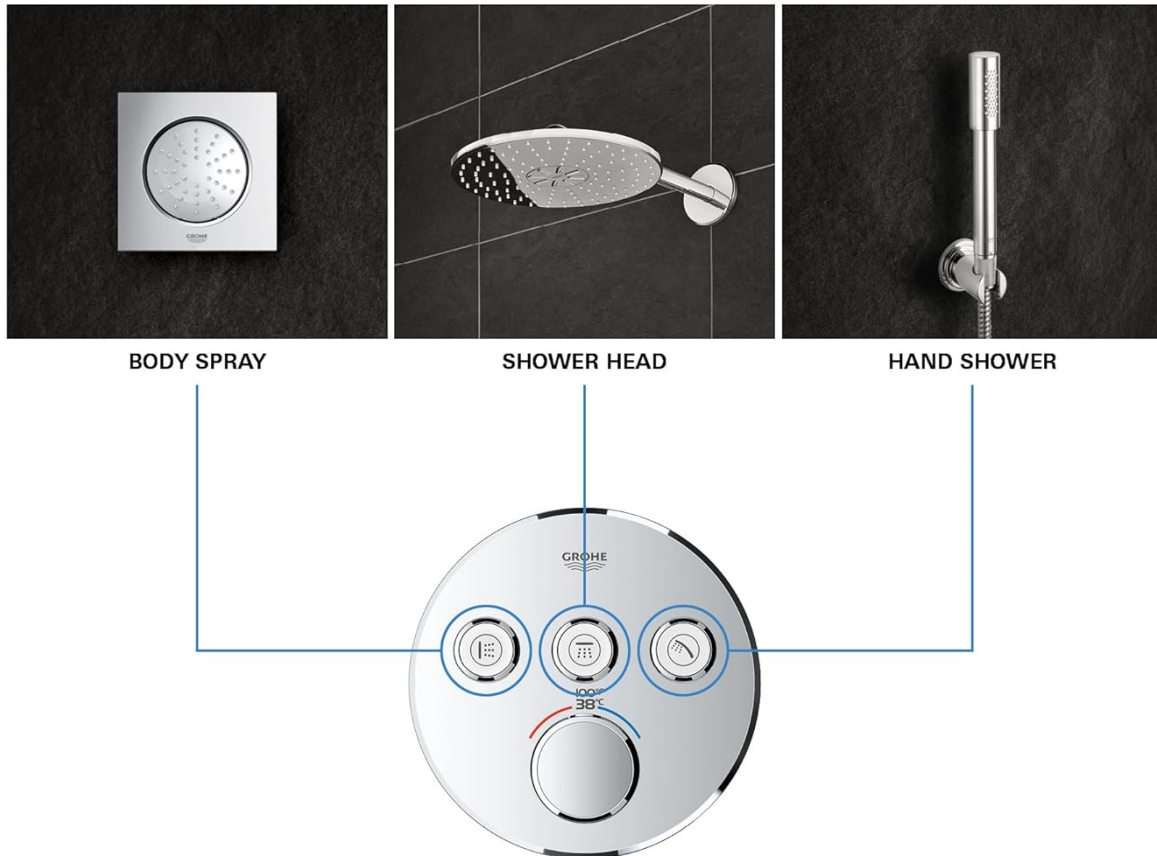
### Water Flow and Outlet Selection:

- The three outer buttons allow you to select and control different water outlets (e.g., hand shower, head shower, body spray, or bath filler).
- **Smart Control:** Push a button to turn an outlet ON or OFF. Turn the button to adjust the water volume from

Eco Joy (reduced flow) to Full Flow.

- **Multiple Outlets:** This trim supports running multiple outlets simultaneously, providing flexibility for various shower setups.
- **Easy Logic Markings:** The buttons feature clear, exchangeable symbols for intuitive identification of each outlet.

### 3 BUTTONS, 3 CONNECTIONS, 3 LEVELS OF ENJOYMENT



**Figure 3: Three Control Buttons.** This diagram illustrates the three distinct buttons for controlling various water outlets, such as a body spray, shower head, and hand shower.





**Figure 4: Activating a Function.** A user's hand demonstrates pressing one of the SmartControl buttons to initiate water flow from a selected outlet.



**Figure 5: Adjusting Water Volume.** This image shows a hand rotating a SmartControl button to precisely adjust the water flow from the chosen outlet.

### Official Product Video:

Your browser does not support the video tag.

**Video 1: GROHE SmartControl Operation.** This video demonstrates the push-turn functionality of the SmartControl buttons for selecting outlets and adjusting water volume.

## MAINTENANCE AND CARE

---

To maintain the pristine appearance and optimal function of your GROHE Grohtherm SmartControl Thermostatic Trim, follow these care guidelines:

- **Cleaning:** The slim profile and durable GROHE Starlight Moon finish are designed for easy cleaning. Use only mild soap and water with a soft cloth. Avoid abrasive cleaners, scouring pads, or harsh chemicals, as these can damage the finish.
- **Regular Inspection:** Periodically check the trim for any signs of wear or damage. Ensure all buttons and knobs operate smoothly.
- **Water Quality:** In areas with hard water, mineral deposits may accumulate. Regular cleaning helps prevent buildup.

## TROUBLESHOOTING

---

If you encounter issues with your thermostatic trim, consider the following:

- **Temperature Fluctuations:** While GROHE Turbostat technology minimizes fluctuations, ensure your water heater is functioning correctly and there are no sudden changes in household water demand. If persistent, consult a plumber.
- **Low Water Flow:** Check if the volume control on the SmartControl buttons is set to full flow. Ensure the main water supply to your shower is adequate.
- **Buttons Not Responding:** Verify that the trim is correctly installed and connected to the GROHE Rapid Smart Box. If issues persist, professional assistance may be required.
- **Leaking:** Any signs of leaking should be addressed immediately by a qualified plumber to prevent water damage.

For complex issues or repairs, it is highly recommended to contact a certified plumber or GROHE customer service.

## SPECIFICATIONS

Feature	Detail
Model Number	29161LS0
Brand	GROHE
Color	Moon White
Material	Metal
Style	Triple
Pattern	Round
Product Dimensions	6.09 x 12.58 x 4.79 inches
Item Weight	1.59 pounds
Maximum Operating Pressure	43.5 Pound per Square Inch
Number of Ports	3
Water Consumption	9.5 Gallons per Minute
Installation Method	Wall Mounted
Included Components	Control Module, Installation Manual, Metal wall escutcheon, Thermostatic Trim
Required Rough-in Set	GROHE Rapid Smart Box (35601000) - Sold Separately

## WARRANTY INFORMATION

This GROHE product comes with a **LIMITED** warranty. For specific details regarding the terms, conditions, and duration of your warranty, please refer to the official warranty documentation included with your product or visit the official GROHE website. Keep your proof of purchase for warranty claims.

## CUSTOMER SUPPORT

For further assistance, technical support, or to inquire about replacement parts, please contact GROHE customer service. You can find contact information on the official GROHE website or through your product's packaging.

**Online Resources:** [Visit GROHE's official website](#) for product registration, FAQs, and additional support.

## **Brand Overview:**

Your browser does not support the video tag.

**Video 2: GROHE Products - Shaping the Future of Water.** This video provides an overview of GROHE's commitment to quality, technology, design, and sustainability in water solutions.