

Manuals+

[Q & A](#) | [Deep Search](#) | [Upload](#)

[manuals.plus](#) /

› [Kenmore](#) /

› [Kenmore Elite 81714 Canister Vacuum User Manual](#)

Kenmore 2081714

Kenmore Elite 81714 Canister Vacuum

Pet Friendly Ultra Plush Lightweight Bagged Canister Vacuum

INTRODUCTION

Thank you for choosing the Kenmore Elite 81714 Canister Vacuum. This manual provides essential information for the safe and efficient operation, maintenance, and troubleshooting of your new vacuum cleaner. Designed for superior cleaning performance across all floor types, including ultra-plush carpets and effective pet hair removal, this appliance will help maintain a cleaner, healthier home environment.

Please read this manual thoroughly before initial use and keep it for future reference.

INCLUDED COMPONENTS

Your Kenmore Elite 81714 vacuum comes with the following components and accessories:

- Canister Unit
- Hose Assembly
- Telescoping Wand
- Ultra Plush Nozzle (Main PowerMate)
- Pet PowerMate Attachment
- Dusting Brush
- Crevice Tool
- HEPA Filter (pre-installed)
- Vacuum Bags (one pre-installed)



Figure 1: Kenmore Elite 81714 Canister Vacuum with main components.



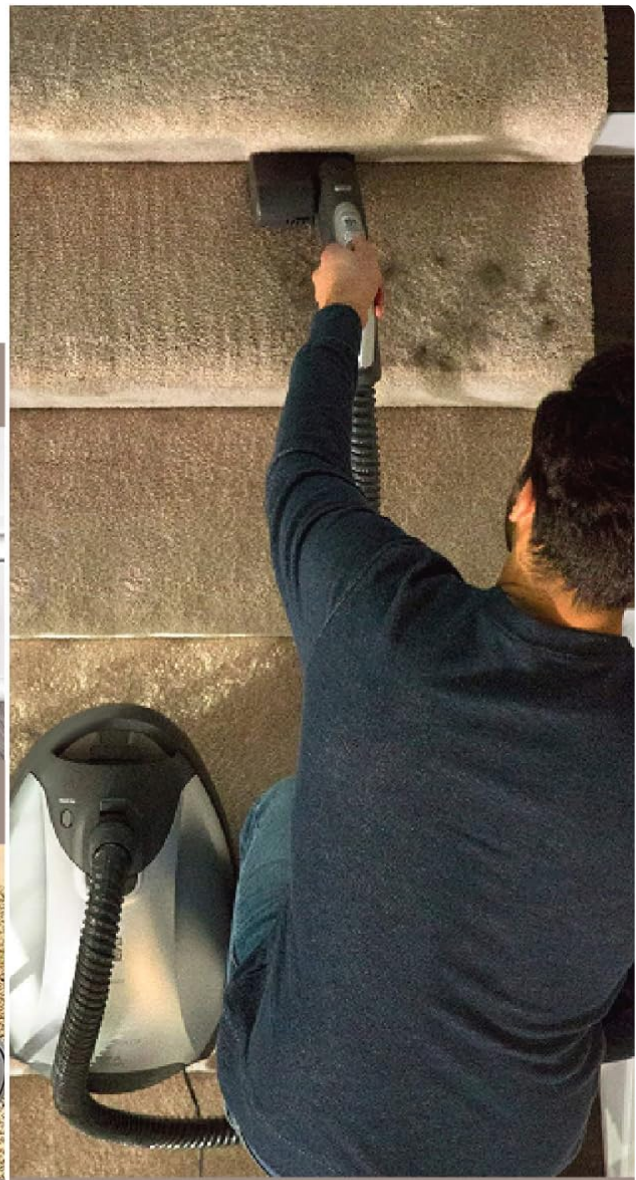
Elite Dusting Brush



Crevice Tool



Elite Floor Brush



Pet PowerMate

Figure 2: Included cleaning tools for specialized tasks.

SETUP

Assembly Instructions

1. **Attach Hose to Canister:** Insert the hose assembly firmly into the suction inlet on the front of the canister unit until it clicks securely into place.
2. **Connect Hose to Wand:** Attach the other end of the hose to the top of the telescoping wand. Ensure a firm connection.
3. **Attach Nozzle to Wand:** Connect the Ultra Plush Nozzle (main power head) to the bottom of the telescoping wand. Press firmly until it locks.
4. **Check Bag and Filter:** Before first use, ensure a vacuum bag is properly installed and the HEPA filter is in place. Refer to the Maintenance section for details.

Your Kenmore Elite vacuum is now ready for operation.

OPERATING INSTRUCTIONS

Powering On/Off and Suction Control

- Plug the power cord into a suitable electrical outlet.
- The power switch and suction control are located on the handle of the telescoping wand.
- Slide the switch to turn the vacuum ON or OFF.
- Adjust the suction power using the control slider for different cleaning needs (e.g., lower suction for delicate rugs, higher for deep carpet cleaning).

Floor Type Adjustment

The Ultra Plush Nozzle features a pile height adjustment to optimize cleaning for various floor surfaces:

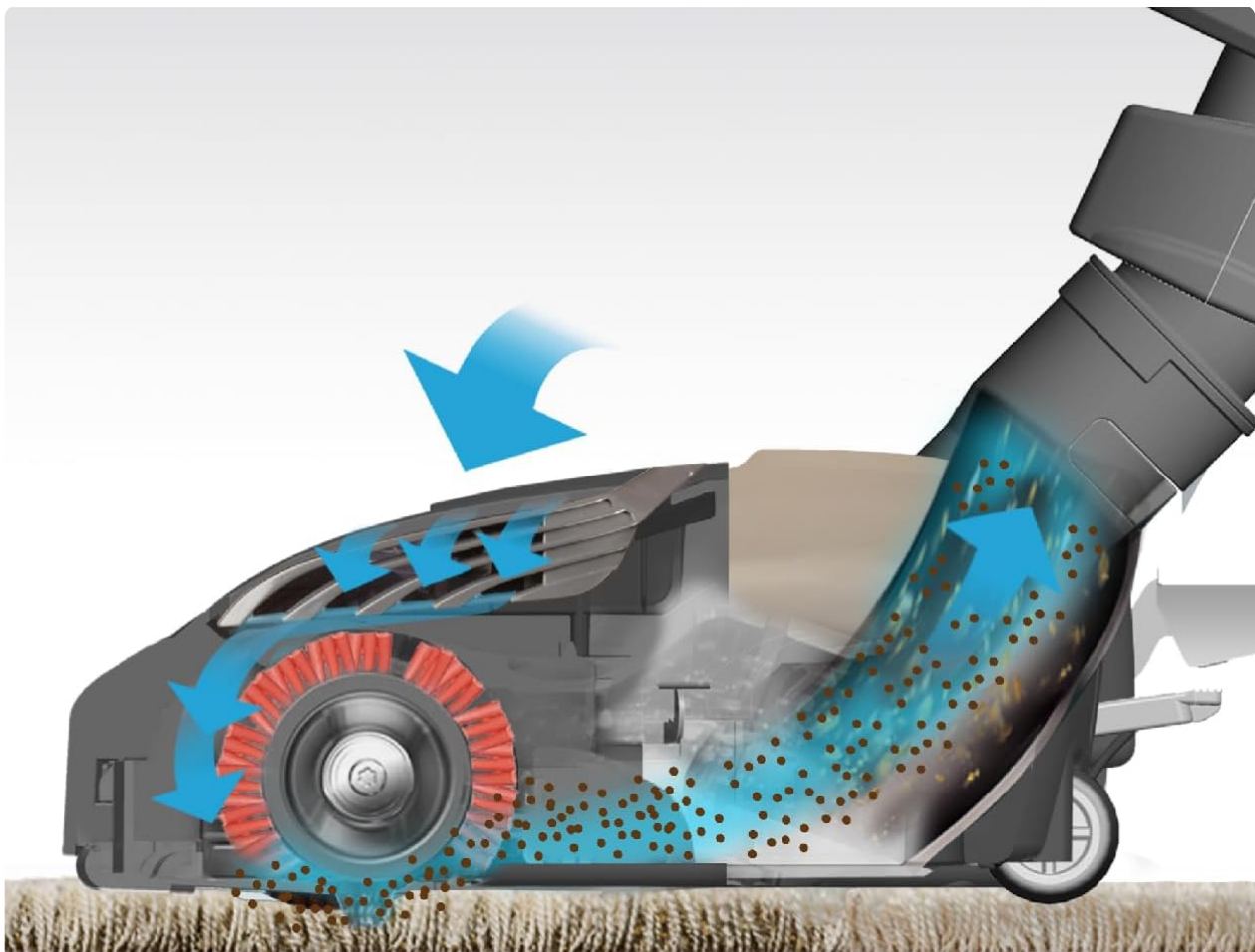
- Use the manual pile height adjustment on the nozzle to select the appropriate setting for your carpet pile (e.g., higher setting for ultra-plush carpets, lower for low-pile carpets or hard floors).
- For hard floors, ensure the brush roll is disengaged if necessary, or use the appropriate setting to prevent scattering debris.



WHOLE HOME CLEAN

Seamlessly transition to clean carpets, hard floors, stairs, and more

Figure 3: Seamless transition between carpet and hard floor cleaning.



ULTRA PLUSH SYSTEM

Vent inlets channel air flow into nozzle for easy maneuverability on thick carpet

Figure 4: Ultra Plush System for enhanced airflow and maneuverability on thick carpets.

Using Attachments

The Kenmore Elite 81714 includes specialized tools for various cleaning tasks. All attachments can be stored onboard the canister for easy access.

- **Pet PowerMate:** This motorized attachment is ideal for lifting stubborn pet hair and dander from carpets, upholstery, and stairs. Its unique design helps prevent hair tangling around the brush.
- **Crevice Tool:** Perfect for cleaning tight spaces, corners, and along baseboards.
- **Dusting Brush:** Use for delicate surfaces, curtains, and furniture.
- **Telescoping Wand:** Extend the wand for reaching high areas like ceilings, ceiling fans, or for cleaning under furniture. The integrated LED headlight illuminates dark areas.



Figure 5: Motorized Pet PowerMate for exceptional pet hair pickup.



EXTENDABLE TELESCOPIC WAND with LED headlight for above floor cleaning

Figure 6: Extendable Telescoping Wand with LED headlight for above-floor cleaning.

MAINTENANCE

Replacing the Vacuum Bag

The Kenmore Elite 81714 uses bagged filtration. An LED light sensor on the canister will illuminate when the bag has reached capacity, indicating it's time for replacement.

1. Unplug the vacuum cleaner from the power outlet.
2. Locate the bag compartment latch on the canister unit.
3. Open the compartment and carefully remove the full vacuum bag.
4. Insert a new genuine Kenmore replacement bag, ensuring it is properly seated.
5. Close the bag compartment securely.

Note: Routinely changing the vacuum bag is crucial for maintaining optimal suction and preventing motor

damage.

HEPA Filter Maintenance

The enhanced HEPA filter system captures 99.97% of debris, including dander, dust particles, odors, pollen, and bacteria. The HEPA filter should be checked and replaced periodically based on usage and household conditions.

- Consult your user manual (PDF link in Support section) for specific instructions on accessing and replacing the HEPA filter.
- Ensure the vacuum is unplugged before performing any filter maintenance.

TROUBLESHOOTING

Problem	Possible Cause	Solution
No Suction or Low Suction	<ul style="list-style-type: none">• Vacuum bag is full.• Hose or attachments are clogged.• Connections are not firm.• Filter is dirty.	<ul style="list-style-type: none">• Replace vacuum bag.• Check and clear any clogs in the hose or attachments.• Ensure all connections (wand, hose, nozzle) are firmly pushed in.• Clean or replace HEPA filter.
Vacuum Not Turning On	<ul style="list-style-type: none">• Not plugged in.• Power outlet issue.• Thermal protector activated.	<ul style="list-style-type: none">• Ensure power cord is securely plugged into a working outlet.• Check household fuse/breaker.• Unplug and allow vacuum to cool for 30 minutes if thermal protector activated.
Pet PowerMate Not Spinning	<ul style="list-style-type: none">• Brush roll tangled with hair/debris.• Connection issue.	<ul style="list-style-type: none">• Clear any hair or debris from the brush roll.• Ensure the Pet PowerMate is firmly connected to the wand.

SPECIFICATIONS

Feature	Detail
Brand	Kenmore

Feature	Detail
Model Name	Floorcare
Item Model Number	2081714
Color	Champagne/Gray
Form Factor	Canister
Filter Type	HEPA Filter
Special Feature	Corded
Wattage	120 watts
Item Weight	29.6 pounds
Product Dimensions	27.76"L x 17.91"W x 13.98"H
Cord Length	26 feet (retractable)
Included Components	Dusting Brush, Crevice Tool, Horsehair Floor Brush
Recommended Uses	Carpet and Floor
Country of Origin	China

WARRANTY INFORMATION

The Kenmore Elite 81714 Canister Vacuum comes with a **1-year limited warranty** from the date of purchase. This warranty covers defects in materials and workmanship under normal household use.

For detailed warranty terms and conditions, please refer to the warranty card included with your product or the official Kenmore website.

Extended protection plans may be available for purchase:

- 2-Year Protection Plan
- 3-Year Protection Plan
- Complete Protect (monthly plan covering eligible purchases)

SUPPORT & RESOURCES

For additional support, frequently asked questions, or to download a digital copy of the user manual, please visit the official Kenmore website or refer to the PDF link below:

[Download User Manual \(PDF\)](#)

For direct assistance, please contact Kenmore Customer Service.