

Fosmon 51018HOM-4PACK

Fosmon WaveLink 51018HOM Add-On Door Contact Sensor Unit Instruction Manual

Model: 51018HOM-4PACK

INTRODUCTION

The Fosmon WaveLink 51018HOM Add-On Door Contact Sensor Unit is designed to expand your existing Fosmon WaveLink Doorbell System. This unit provides an additional layer of security by detecting when a door or window is opened, transmitting a signal to your compatible receiver (not included) to alert you with a customizable ringtone. Its wireless and portable design makes it suitable for various applications, from home security to retail business monitoring.

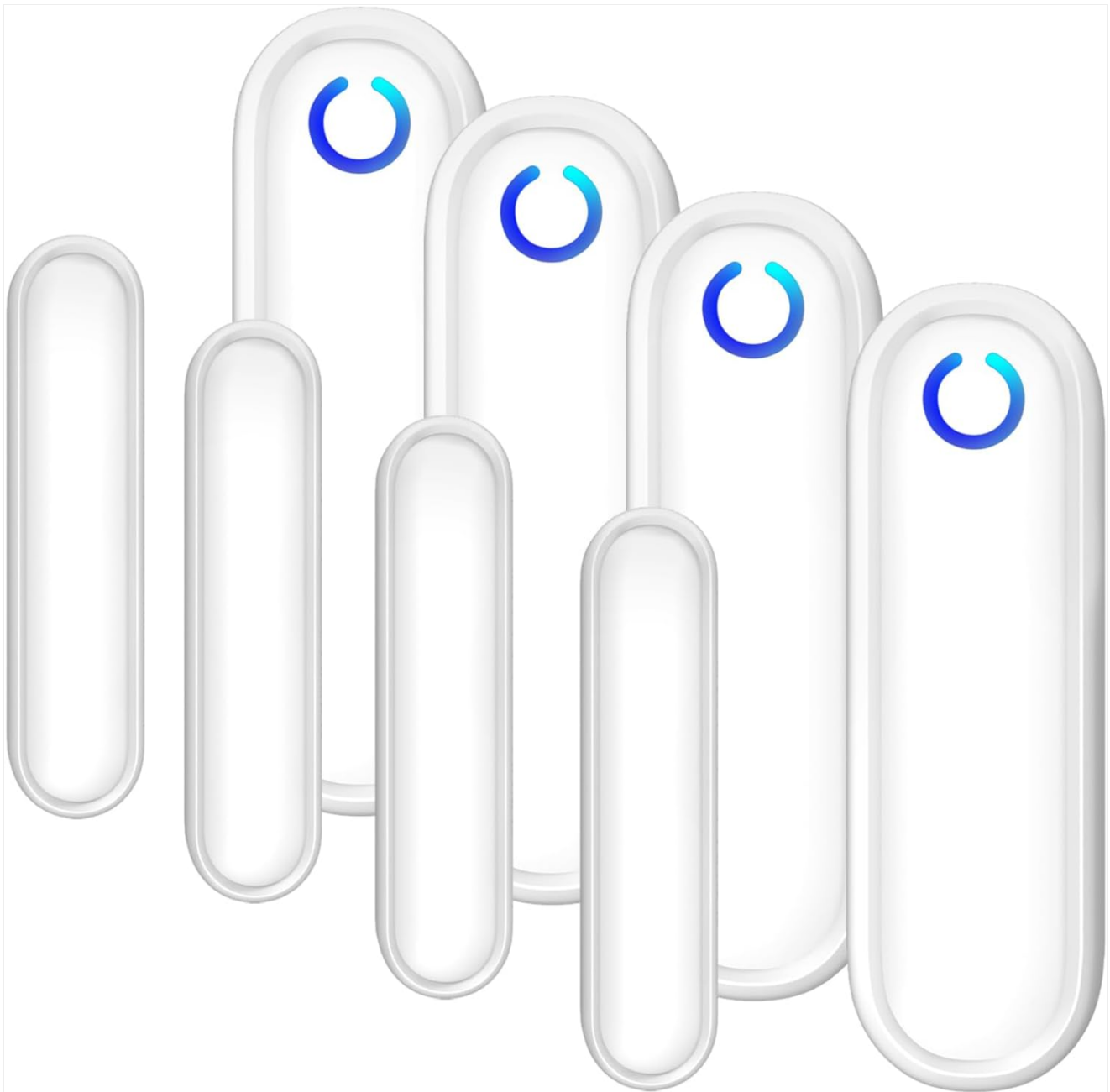


Image: Four Fosmon WaveLink Door Contact Sensor Units, showcasing the product in a multi-pack.

PACKAGE CONTENTS

- Magnetic Door Sensor Transmitter
- Double Sided Tape
- Anchors & Screws
- AA Transmitter Battery (Note: The product specifications state 'Batteries Included? No', but the description lists 'AA Transmitter Battery' in package contents. Please verify upon receipt.)

Small and Compact Design



Image: Contents of the package, including the door sensor, user manual, screws, anchors, and double-sided tape.

FEATURES

- **Expandable System:** Designed to seamlessly integrate with existing Fosmon WaveLink Doorbell Systems.
- **Modern Design:** Features a sleek, contemporary design suitable for various home and business environments.
- **Magnetic Door Sensor:** Activates when the magnetic stripe is separated, signaling the receiver.
- **Built-in LED Indicator:** Provides a visual alert, beneficial for the hearing impaired.
- **Easy Installation:** Wire-free setup for quick and convenient installation.

COMPATIBILITY

This add-on door sensor transmitter is compatible with the following Fosmon WaveLink Doorbell Systems:

- 51004HOM - Fosmon WAVELINK Wireless Entry Alert Doorbell
- 51005HOM - Fosmon WAVELINK Wireless Motion Doorbell Alert Sensor
- 51007HOM - Fosmon WAVELINK Wireless Door Open Chime
- 51009HOM - Fosmon WAVELINK Wireless Entry Alert Doorbell (Black)

This is part of **WAVE** System LINK

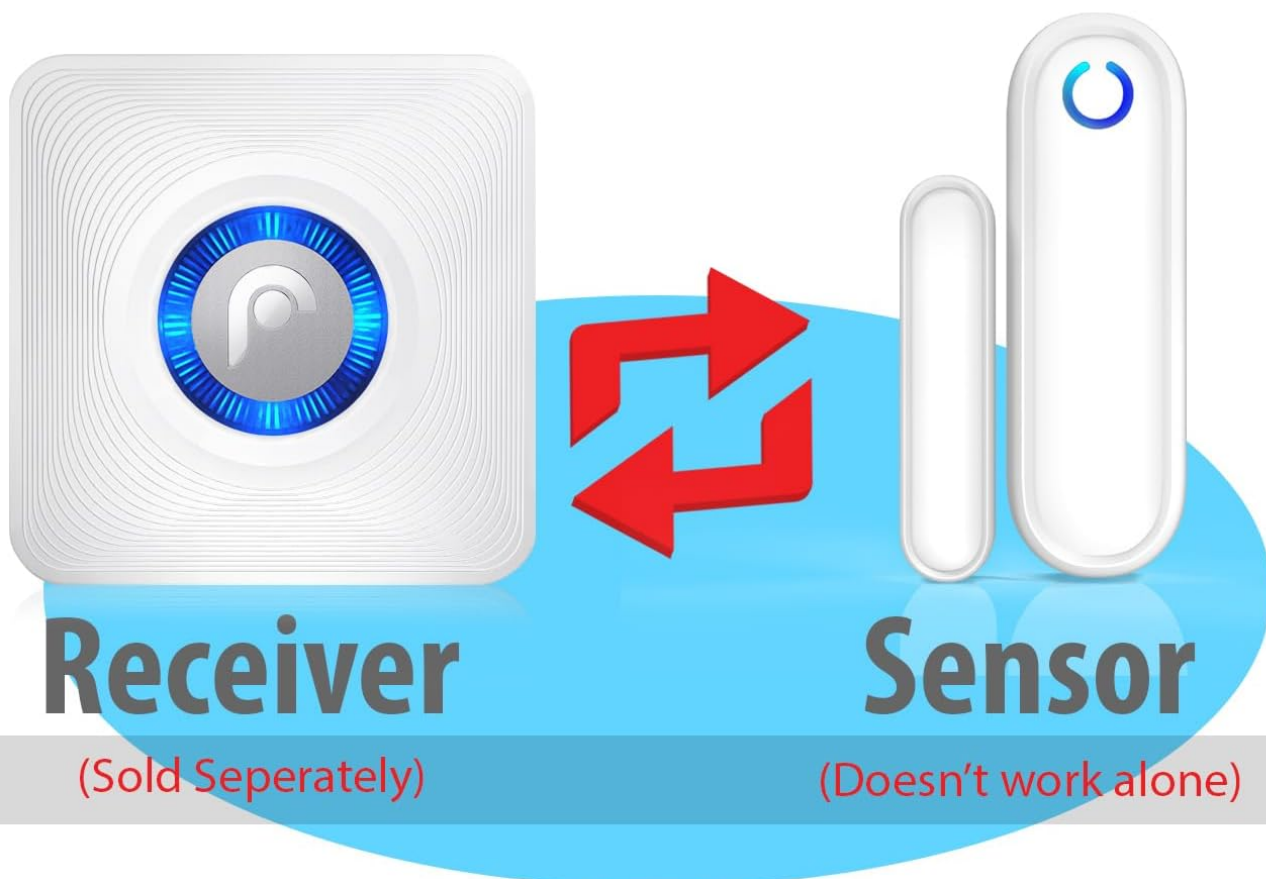


Image: Diagram illustrating the sensor as part of the WaveLink system, showing communication between the sensor and a separately sold receiver.

SETUP AND INSTALLATION

The Fosmon WaveLink door sensor is designed for wire-free and easy installation. Each receiver can be paired with up to 10 transmitters, and each transmitter can be paired with up to 10 receivers.

Installation Steps:

1. **Prepare the Sensor:** Insert the 1.5V AA Alkaline Battery into the transmitter unit.

2. **Choose Mounting Location:** Select a clean, dry surface on your door frame and the corresponding door where the sensor and its magnetic component will be aligned when the door is closed. Ensure the two parts are within close proximity (e.g., less than 1 cm) when the door is shut.
3. **Mounting Options:**
 - **Using Double-Sided Tape:** Peel off the protective backing from the double-sided tape and firmly press the main sensor unit onto the door frame and the smaller magnetic component onto the door, ensuring they align.
 - **Using Screws and Anchors:** For a more secure installation, use the provided screws and anchors to mount the sensor unit and its magnetic component. Pre-drill small pilot holes if necessary.
4. **Pairing with Receiver:** Refer to your Fosmon WaveLink receiver's instruction manual for specific pairing instructions. Generally, this involves putting the receiver into pairing mode and then activating the door sensor (e.g., by separating the magnetic parts) to establish the connection.
5. **Test Functionality:** Once installed and paired, open and close the door to ensure the sensor triggers the receiver and the LED indicator on the transmitter illuminates.



Receiver
Sold Separately

Keep Your Children Safe

Alerts when your
little one opens the door.

Image: Illustrates the sensor's use for child safety, showing a child opening a door equipped with the sensor, and a receiver in the background.

OPERATION

Once installed and paired with a compatible Fosmon WaveLink receiver, the door contact sensor operates automatically. When the door or window to which the sensor is attached is opened, the magnetic connection between the two sensor parts is broken. This action triggers the transmitter to send a wireless signal to the paired receiver. The receiver will then alert you with its programmed ringtone, indicating that the door or window has been opened.

The built-in LED indicator on the transmitter will flash when activated, providing a visual confirmation of the sensor's operation.



Retail Business

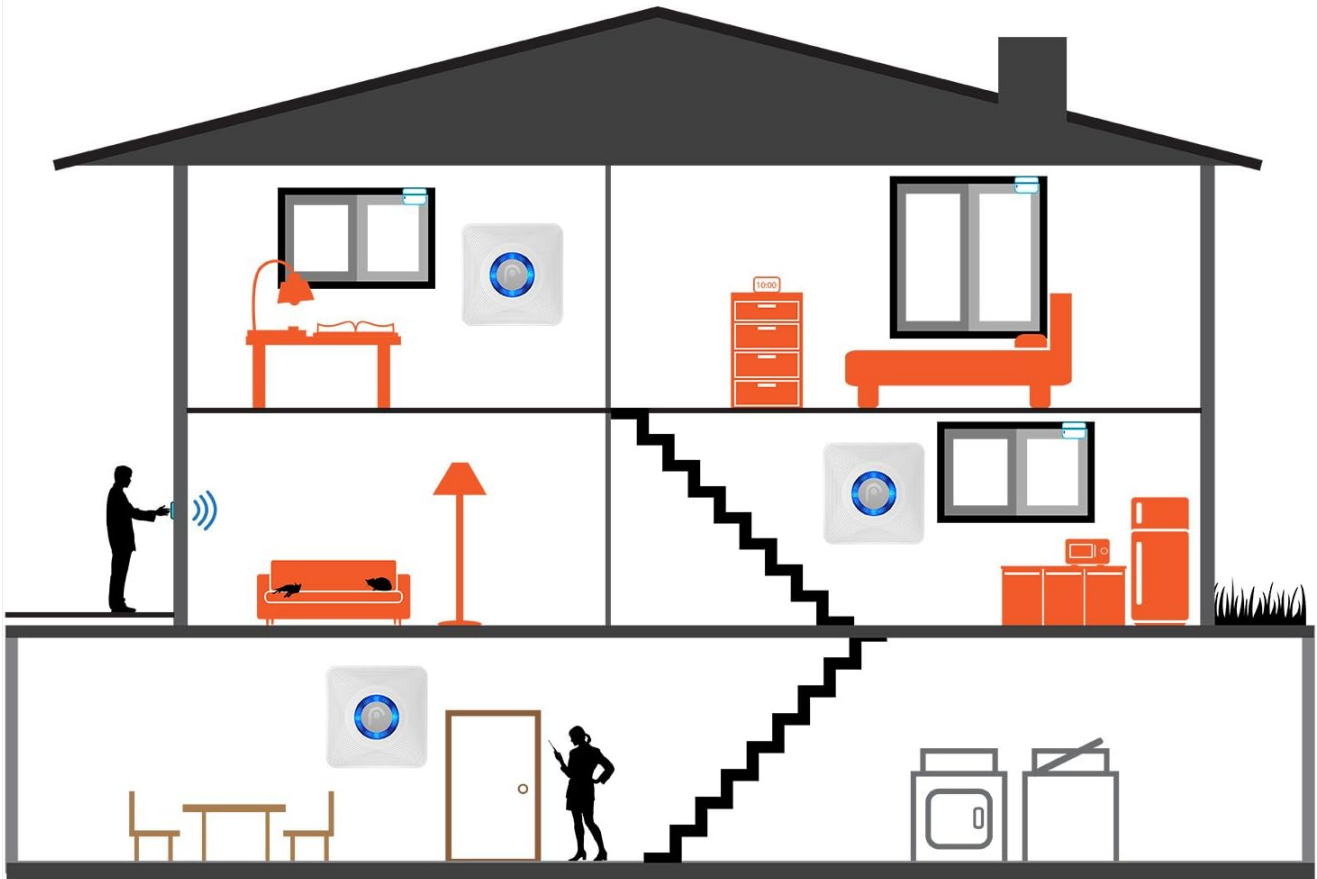
Notifies when customers arrive

Image: Depicts the sensor's application in a retail business setting, notifying staff when customers enter.



Image: Shows the sensor's role in deterring break-ins, with a sensor mounted on a window being tampered with.

Customize and Expand



Fosmon offers several wireless doorbell options so that you can add receivers and/or transmitters depending on your needs.

Image: Illustrates how the system can be customized and expanded throughout a home with multiple sensors and receivers.

MAINTENANCE

To ensure optimal performance of your Fosmon WaveLink Door Contact Sensor Unit, follow these maintenance guidelines:

- **Battery Replacement:** Replace the 1.5V AA Alkaline Battery when the LED indicator on the transmitter no longer illuminates or if the sensor fails to trigger the receiver reliably.
- **Cleaning:** Wipe the sensor units with a soft, dry cloth. Do not use abrasive cleaners or solvents.
- **Alignment Check:** Periodically check that the main sensor unit and its magnetic component remain properly aligned on the door/window and frame to ensure consistent detection.
- **Environmental Conditions:** Ensure the sensor is not exposed to extreme temperatures or direct moisture, as this can affect performance and lifespan.

TROUBLESHOOTING

If you experience issues with your Fosmon WaveLink Door Contact Sensor Unit, consider the following:

- **Sensor Not Triggering Receiver:**
 - **Check battery:** Ensure the battery is correctly inserted and has sufficient charge. Replace if necessary.

- Check alignment: Verify that the main sensor unit and the magnetic component are properly aligned and close enough when the door/window is closed.
- Re-pair sensor: Attempt to re-pair the sensor with your receiver according to your receiver's instructions.
- Range: Ensure the sensor is within the operating range of your receiver (maximum 500 feet or 150 meters in open area). Walls and other obstructions can reduce this range.

- **False Alarms:**

- Secure mounting: Ensure both parts of the sensor are securely mounted and do not shift or vibrate, which could cause momentary separation.
- Environmental factors: Extreme temperature changes or strong electromagnetic interference might rarely affect performance.

- **LED Indicator Not Working:**

- Battery: This typically indicates a low or dead battery. Replace the battery.

If these steps do not resolve the issue, please contact Fosmon customer support for further assistance.

SPECIFICATIONS

Operating Range	Maximum 500 feet or 150 meters (in open area)
LED Indicator	Yes
Transmitter Battery	1.5V AA Alkaline Battery
Transmitter Power Consumption	<10mW
Operating Frequency	433 MHz \pm 2MHz
Operating Temperature	5°F to 140°F (-15°C to 60°C)
Transmitter Dimension	2.95 x 1.97 x 0.63 inches (75 x 50 x 18 millimeters)
Weight	0.92 ounces (26 grams)
Control Method	Touch
Mounting Type	Wall Mount
Sensor Technology	Contact Sensor



Image: Detailed view of the sensor with its dimensions, highlighting its small and compact design.

WARRANTY AND SUPPORT

For warranty information and customer support, please refer to the official Fosmon website or contact their customer service directly. Keep your purchase receipt for any warranty claims.