

[manuals.plus](#) /

› [SuperATV](#) /

› [SuperATV 1.5" Forward Offset A Arms Installation and Maintenance Manual for Honda Pioneer 1000/1000-5 \(Model AA-H-PIO1K-1.5-HC-02\)](#)

SuperATV AA-H-PIO1K-1.5-HC-02

SuperATV 1.5" Forward Offset A Arms Instruction Manual

Model: AA-H-PIO1K-1.5-HC-02

1. INTRODUCTION

This manual provides essential information for the installation, operation, and maintenance of your SuperATV 1.5" Forward Offset A Arms. Please read these instructions thoroughly before proceeding with installation to ensure proper function and safety.

1.1 Product Overview

The SuperATV 1.5" Forward Offset A Arms are designed to enhance tire clearance and vehicle stability. They provide an additional 1.5 inches of forward offset, allowing for larger tire fitment and an extended wheelbase.



Figure 1: SuperATV 1.5" Forward Offset A Arms installed on a Honda Pioneer.

1.2 Vehicle Fitment

These A Arms are compatible with the following Honda Pioneer models:

- Honda Pioneer 1000: 2016-2021
- Honda Pioneer 1000-5: 2016-2021
- Honda Pioneer 1000 Deluxe: 2016-2021
- Honda Pioneer 1000-5 Deluxe: 2016-2021
- Honda Pioneer 1000 Limited Edition: 2017-2021
- Honda Pioneer 1000-5 Limited Edition: 2017-2021

Important Fitment Notes:

- Pioneer 1000 or Pioneer 1000-5 Limited Edition Models require Rhino 2.0 axles.
- Wheel spacers may be necessary when using 12" wheels.
- If installing with a 3" Lift Kit, Rhino Brand Axles are mandatory. Stock axles will bind.
- Does NOT fit Trail models if used with a lift kit.

2. PACKAGE CONTENTS

Verify that all components listed below are present in your package before beginning installation.

- Upper A-arm (Passenger Side)
- Upper A-arm (Driver Side)
- Lower A-arm (Passenger Side)
- Lower A-arm (Driver Side)

- Steering Stop Kit
- UHMW Bushings with Sleeves (Preinstalled)
- Adjustable Pivot Blocks



Figure 2: Complete set of SuperATV 1.5" Forward Offset A Arms components.

3. INSTALLATION NOTES

The A-arms feature 1.25" tubing, which is 25% stronger than standard stock components. The 1.5" forward offset provides increased tire clearance, accommodating tires up to 28" in diameter, and contributes to a longer wheelbase for improved stability.

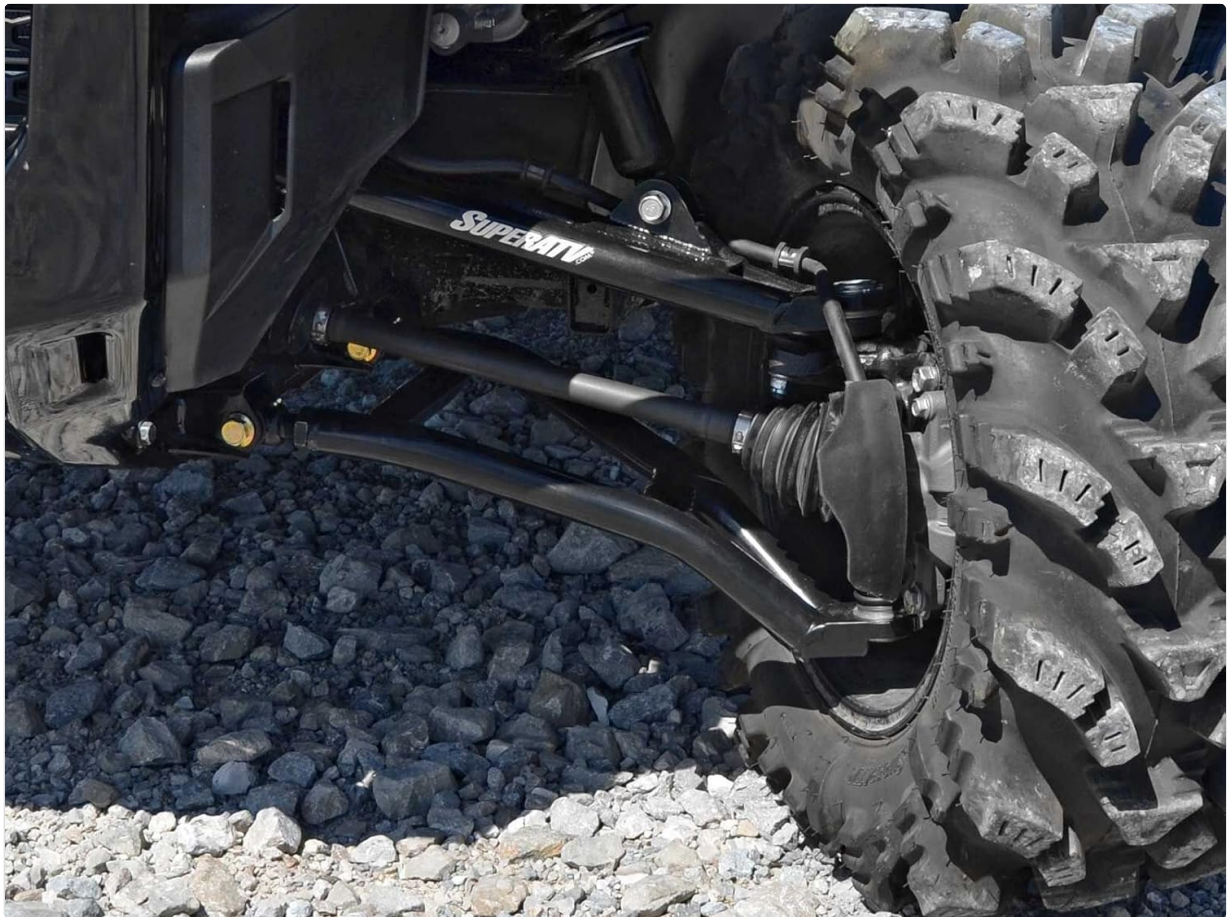


Figure 3: Close-up of an installed A-arm, highlighting the robust construction.

3.1 Camber Adjustability

The included adjustable pivot blocks allow for precise alignment adjustments. This feature enables you to maintain optimal camber settings as needed, which is crucial for tire wear and handling performance.

3.2 Ball Joints and Tie Rod Ends

This product does not include ball joints. Ball joints and tie rod ends are considered wear and tear items and are not covered under the lifetime warranty.

4. SPECIFICATIONS

Feature	Detail
Brand	SuperATV
Model Number	AA-H-PIO1K-1.5-HC-02
Auto Part Position	Front
Material	Alloy Steel
Tubing Diameter	1.25 inches
Forward Offset	1.5 inches

Maximum Tire Size	28 inches
Included Components	Upper A-arms, Lower A-arms, Steering Stop Kit, UHMW Bushings with Sleeves, Adjustable Pivot Blocks
Item Weight	39.9 pounds
Package Dimensions	22.4 x 18.2 x 8 inches

5. MAINTENANCE

Regular inspection of your A-arms and associated suspension components is recommended to ensure continued safe operation and longevity. Check for:

- **Loose fasteners:** Ensure all bolts and nuts are tightened to manufacturer specifications.
- **Wear on bushings:** Inspect UHMW bushings for signs of wear or damage. Replace as necessary.
- **Damage to A-arms:** Check for bends, cracks, or other structural damage.
- **Alignment:** Periodically check and adjust camber using the adjustable pivot blocks to prevent uneven tire wear.

6. TROUBLESHOOTING

If you experience issues after installation, consider the following:

- **Binding Axles:** If axles are binding, verify that the correct Rhino 2.0 axles are installed, especially on Limited Edition models or when using a 3" lift kit. Stock axles will bind under these conditions.
- **Tire Rubbing:** Ensure that wheel spacers are used if running 12" wheels, as recommended. Verify tire size does not exceed 28".
- **Uneven Tire Wear/Poor Handling:** Adjust camber using the adjustable pivot blocks. Professional alignment may be required.
- **Loose Components:** Re-check all fasteners for proper torque.

For persistent issues, contact SuperATV customer support.

7. WARRANTY INFORMATION

SuperATV provides a lifetime warranty for these High Clearance A Arms to the original purchaser. This warranty covers manufacturing defects and material failures under normal use.

Exclusions:

- Ball joints and tie rod ends are considered wear and tear items and are not covered by the lifetime warranty.
- Damage resulting from improper installation, misuse, abuse, or modification of the product.

For warranty claims, please retain your proof of purchase and contact SuperATV directly.

8. SUPPORT AND CONTACT

For technical assistance, installation questions, or warranty inquiries, please contact SuperATV customer support. Refer to the official SuperATV website for the most current contact information.

Manufacturer: SuperATV.com

Website: www.superatv.com

© 2023 SuperATV. All rights reserved.

Related Documents - AA-H-PIO1K-1.5-HC-02

	<p>SuperATV Fold Down Glass Windshield Installation Instructions for Polaris Ranger 1000 (2018+)</p> <p>Detailed installation guide for the SuperATV Fold Down Glass Windshield, designed for the Polaris Ranger 1000 (2018+). Includes a list of components, hardware specifications, step-by-step instructions, and important safety and liability information.</p>
	<p>Polaris General XP 1000 High Clearance A-Arms & Tie Rod Kit Installation Guide SuperATV</p> <p>Detailed installation instructions for SuperATV's Forward Offset High Clearance A-Arms and Swaged Straight Heavy Duty Tie Rod Kit for the Polaris General XP 1000. Includes parts lists, step-by-step guidance, and setup tips.</p>
	



[SuperATV Flip Windshield Installation Instructions for Polaris Ranger 1000 \(2018\)](#)

Step-by-step installation guide for the SuperATV Flip Windshield designed for the Polaris Ranger 1000 (2018) model. Includes parts list, hardware details, and assembly instructions.