

**Proxicast ANT-126-002**

# Proxicast High Gain Omni-Directional Antenna User Manual

Model: ANT-126-002

## INTRODUCTION

---

This manual provides essential information for the installation, operation, and maintenance of your Proxicast High Gain 10 dBi Universal Wide-Band 4G / LTE, 5G & WiFi Omni-Directional Outdoor Antenna. This antenna is designed to improve signal strength and speed for various cellular broadband services and Wi-Fi networks.



Figure 1: Proxicast High Gain Omni-Directional Antenna (Model ANT-126-002)

## PRODUCT OVERVIEW

The Proxicast ANT-126-002 is an omni-directional antenna designed for outdoor use. It supports a wide frequency range, making it compatible with 4G LTE, 5G Sub-6 cellular services, and Wi-Fi. Its robust construction ensures durability in various weather conditions.

- **Frequency Range:** 600 - 6000 MHz
- **Gain:** 10 dBi
- **Connector Type:** N-Female
- **Construction:** Weather and impact resistant ABS radome
- **Mounting:** Includes stainless steel 2-way pole/wall mounting bracket



Figure 2: Antenna compatibility with 5G, LTE, and WiFi networks.

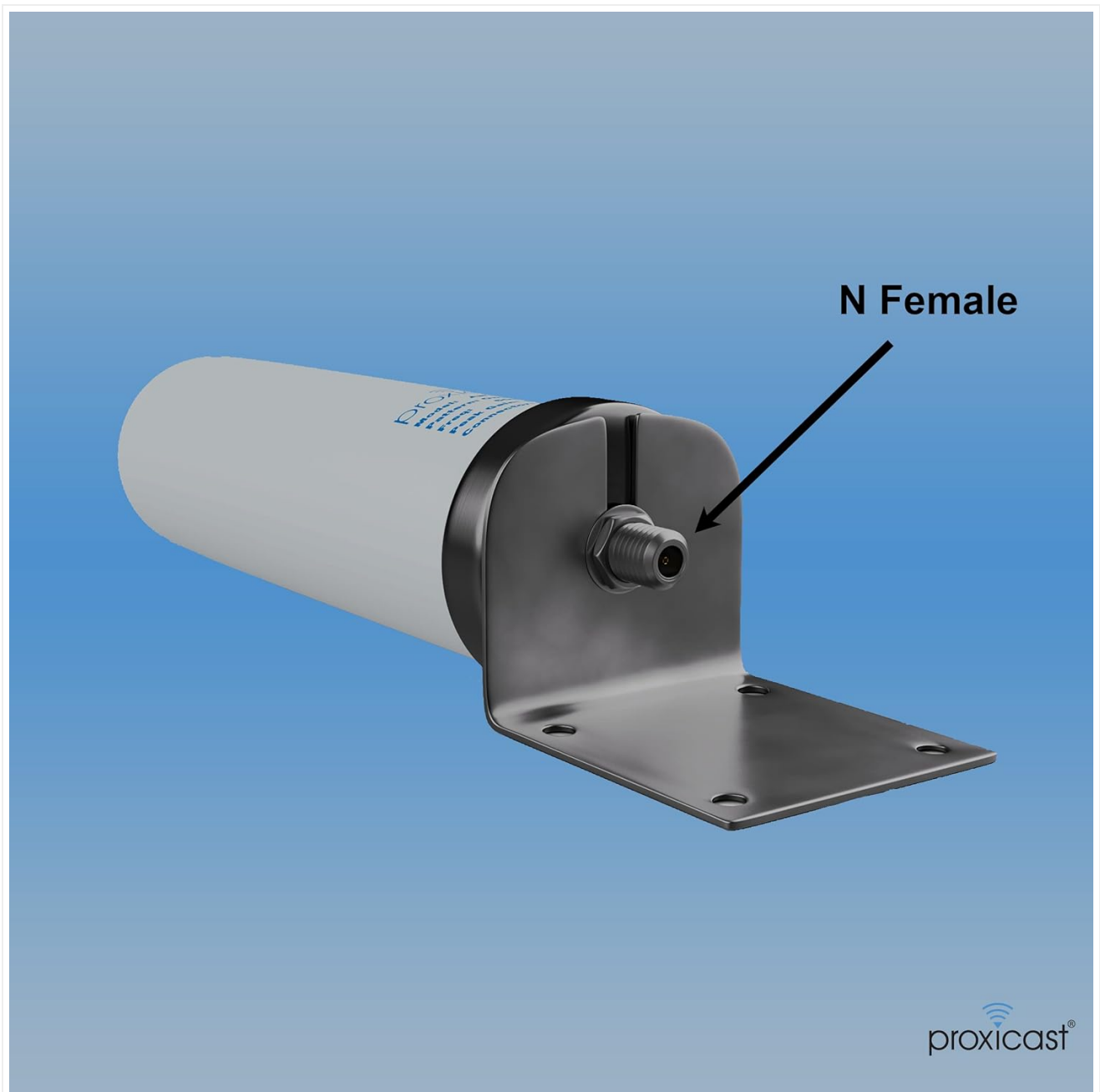


Figure 3: Integrated N-Female connector for coaxial cable attachment.

## SETUP AND INSTALLATION

Proper installation is crucial for optimal performance. The antenna comes with a versatile mounting bracket for pole or wall installation.

### What's in the Box:

- 1 x Proxicast Omni-Directional Antenna
- 1 x L Bracket
- 2 x U Bolts
- 4 x Washers
- 4 x Lock Washers
- 4 x Nuts



Figure 4: Included mounting hardware for the antenna.

- 1 = Antenna
- 2 = L Bracket
- 3 = U Bolt (x2)
- 4 = Washer (x4)
- 5 = Lock Washer (x4)
- 6 = Nut (x4)

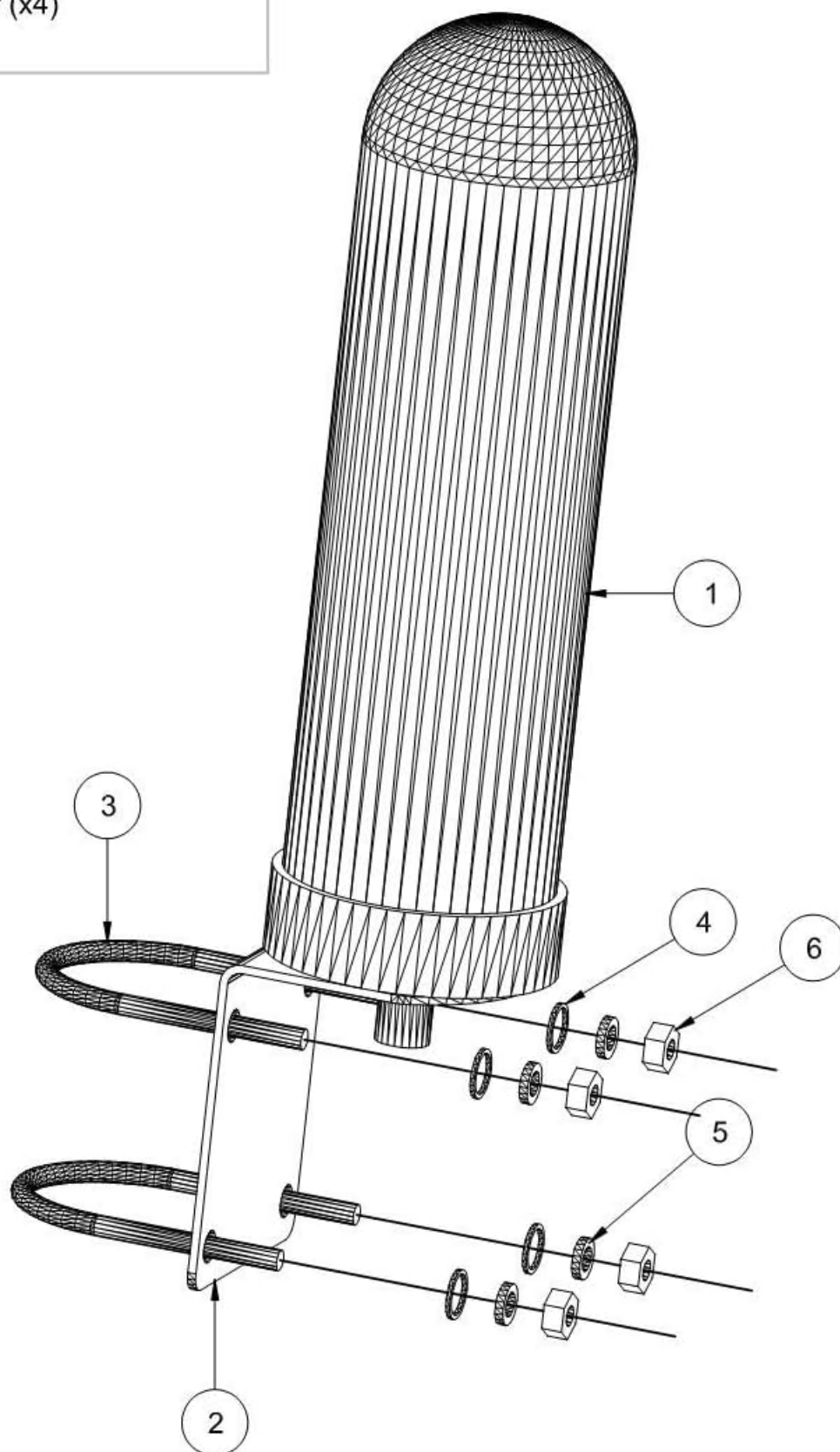


Figure 5: Exploded view of antenna and mounting components.

### Mounting Instructions:

1. **Choose Location:** Select an outdoor location with a clear line of sight to cellular towers or Wi-Fi access

points. Consider mounting on a pole or wall.

2. **Assemble Bracket:** Attach the L-bracket to the antenna using the provided nuts and washers.
3. **Secure Antenna:**
  - For pole mounting: Use the U-bolts to secure the L-bracket to a mast (mast sold separately).
  - For wall mounting: Use appropriate screws (not included) to secure the L-bracket directly to a sturdy wall surface.
4. **Connect Coaxial Cable:** Connect a 50 Ohm coaxial cable (not included) to the N-Female connector on the antenna. Ensure the connection is tight and weatherproofed.
5. **Route Cable:** Route the coaxial cable to your cellular modem, router, or radio device.

**Important Note:** This antenna must be connected via a 50 Ohm coaxial cable to an existing cellular modem/router/radio device. It does not improve signal for cell phones or other devices not directly wired to the antenna.





Figure 6: Example of the antenna mounted on an outdoor pole.



## OPERATING PRINCIPLES

The Proxicast ANT-126-002 is an omni-directional antenna, meaning it receives and transmits signals in a 360-degree pattern around its axis. This makes it suitable for locations where the exact direction of the signal source is unknown or where signals may come from multiple directions.

It is designed to enhance the signal strength and data throughput for compatible devices by providing a higher gain connection to cellular and Wi-Fi networks. The antenna's wideband capability ensures compatibility across various frequency bands used by major carriers like Verizon, AT&T, T-Mobile, Telus, Bell Canada, Rogers, and DigiCel.

Your browser does not support the video tag.

Video 1: A brief overview of the Proxicast 10 dBi Wide-Band Omni Antenna, showcasing its design and features.

## MAINTENANCE

The Proxicast antenna is built for outdoor durability with a weather and impact resistant ABS radome. Minimal maintenance is required.

- **Periodic Inspection:** Annually inspect the antenna and its mounting hardware for any signs of wear, corrosion, or loosening. Ensure all connections remain secure.
- **Cleaning:** If necessary, gently clean the antenna's exterior with a soft, damp cloth. Avoid using harsh chemicals or abrasive materials.
- **Cable Integrity:** Check the coaxial cable for any damage, kinks, or degradation of the outer jacket. Ensure weatherproof seals at connectors are intact.

## TROUBLESHOOTING

If you experience issues with signal improvement, consider the following troubleshooting steps:

- **Check Connections:** Ensure the 50 Ohm coaxial cable is securely connected to both the antenna's N-Female port and your modem/router/radio device. A loose connection can significantly degrade performance.
- **Cable Type:** Verify that you are using a 50 Ohm coaxial cable. Using a 75 Ohm cable (common for TV) will result in poor performance.
- **Required Adapters:** If your device uses a different connector type (e.g., SMA), ensure you are using the correct 50 Ohm adapter (e.g., N Male to SMA Female). Incorrect adapters can cause signal loss.
- **Antenna Placement:** Experiment with different mounting locations and heights. Even small changes in position can impact signal reception, especially if obstructions are present.
- **Device Compatibility:** Confirm that your modem/router/radio device is configured to use an external antenna and is compatible with the antenna's frequency range.
- **Signal Source:** While omni-directional, performance can still be affected by distance to the nearest cell tower or Wi-Fi access point.

If problems persist after following these steps, contact Proxicast customer support for further assistance.

## SPECIFICATIONS

Feature	Detail
Model Number	ANT-126-002
Brand	Proxicast

Feature	Detail
Antenna Type	4G/LTE, 5G, WiFi Omni-Directional Wideband Antenna
Frequency Range	600 - 6000 MHz
Peak Gain	10 dBi
Impedance	50 Ohm
Connector Type	N-Female
Product Dimensions	3 x 3 x 10.6 inches (7.6 x 7.6 x 26.9 cm)
Item Weight	1 pound (0.45 kg)
Color	White
Special Features	360 Degree, High Gain, Multidirectional, Signal Booster, Wireless

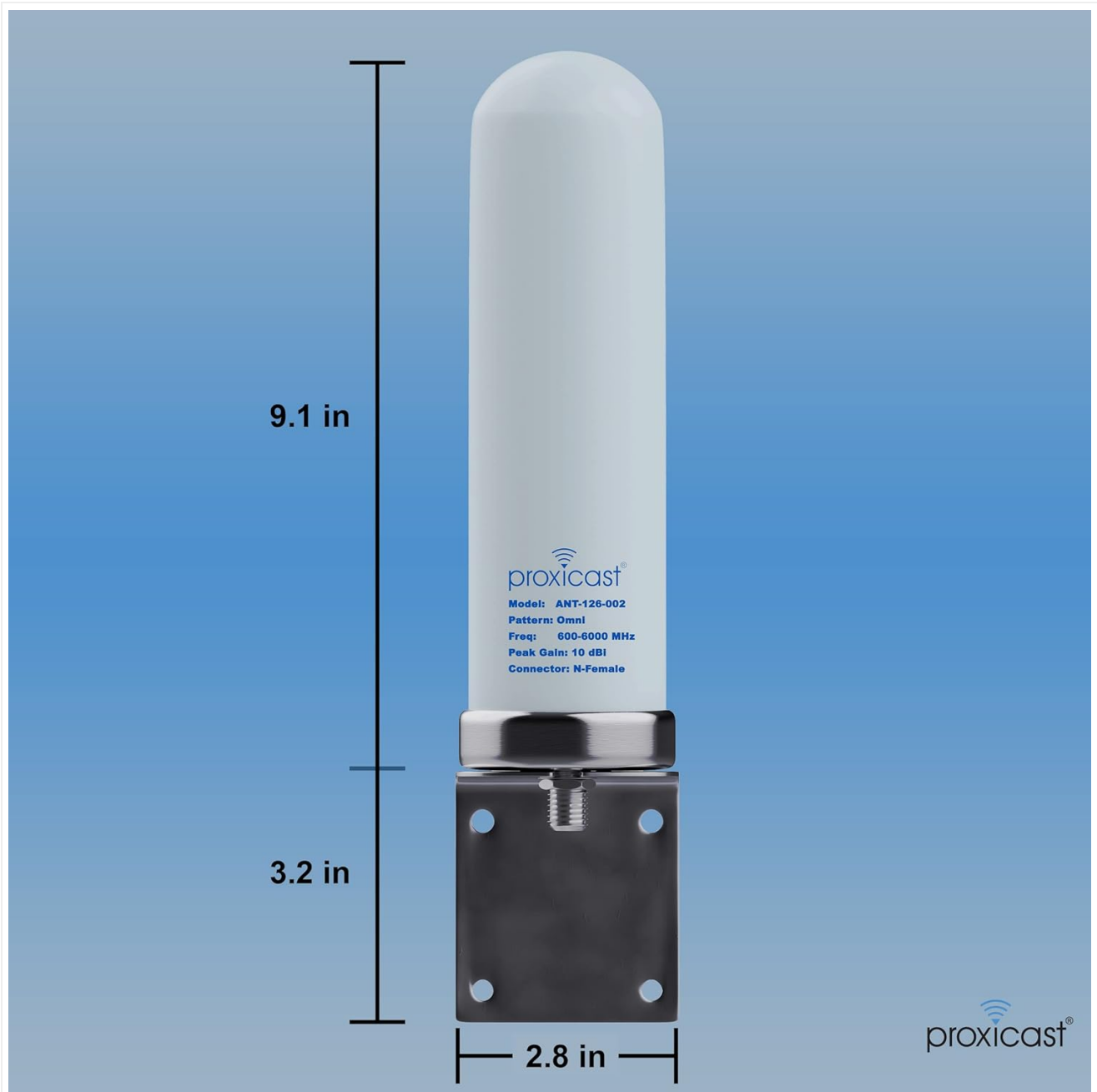
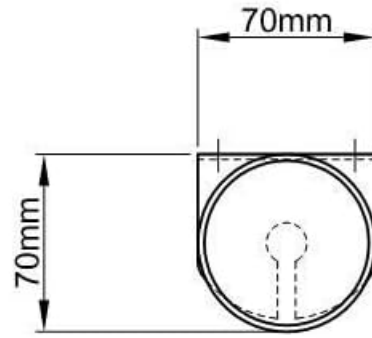
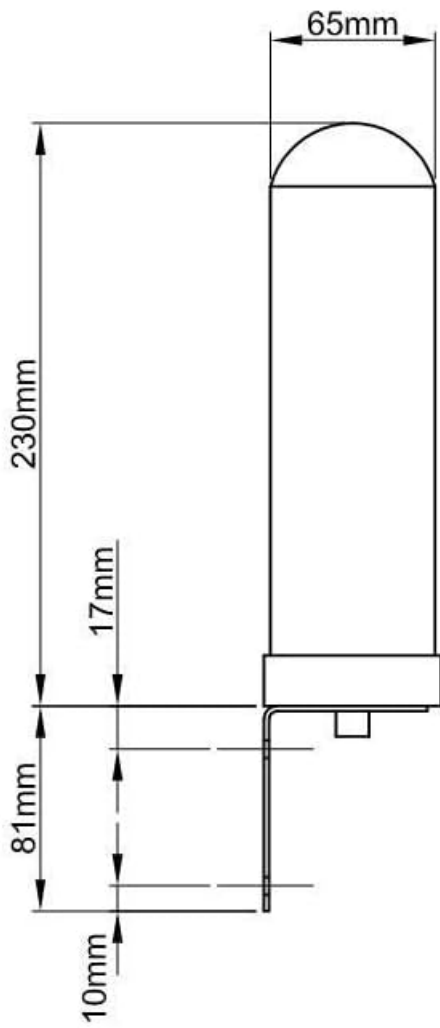


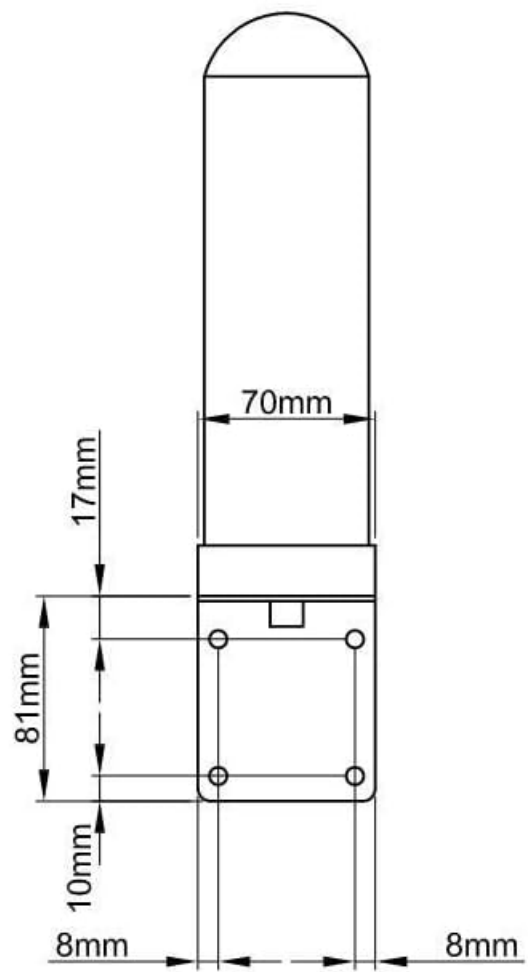
Figure 7: Physical dimensions of the Proxicast antenna.



TOP VIEW



SIDE VIEW



FRONT VIEW

Figure 8: Detailed technical drawing showing antenna dimensions.

# Antenna Performance Verified by Independent Lab Testing

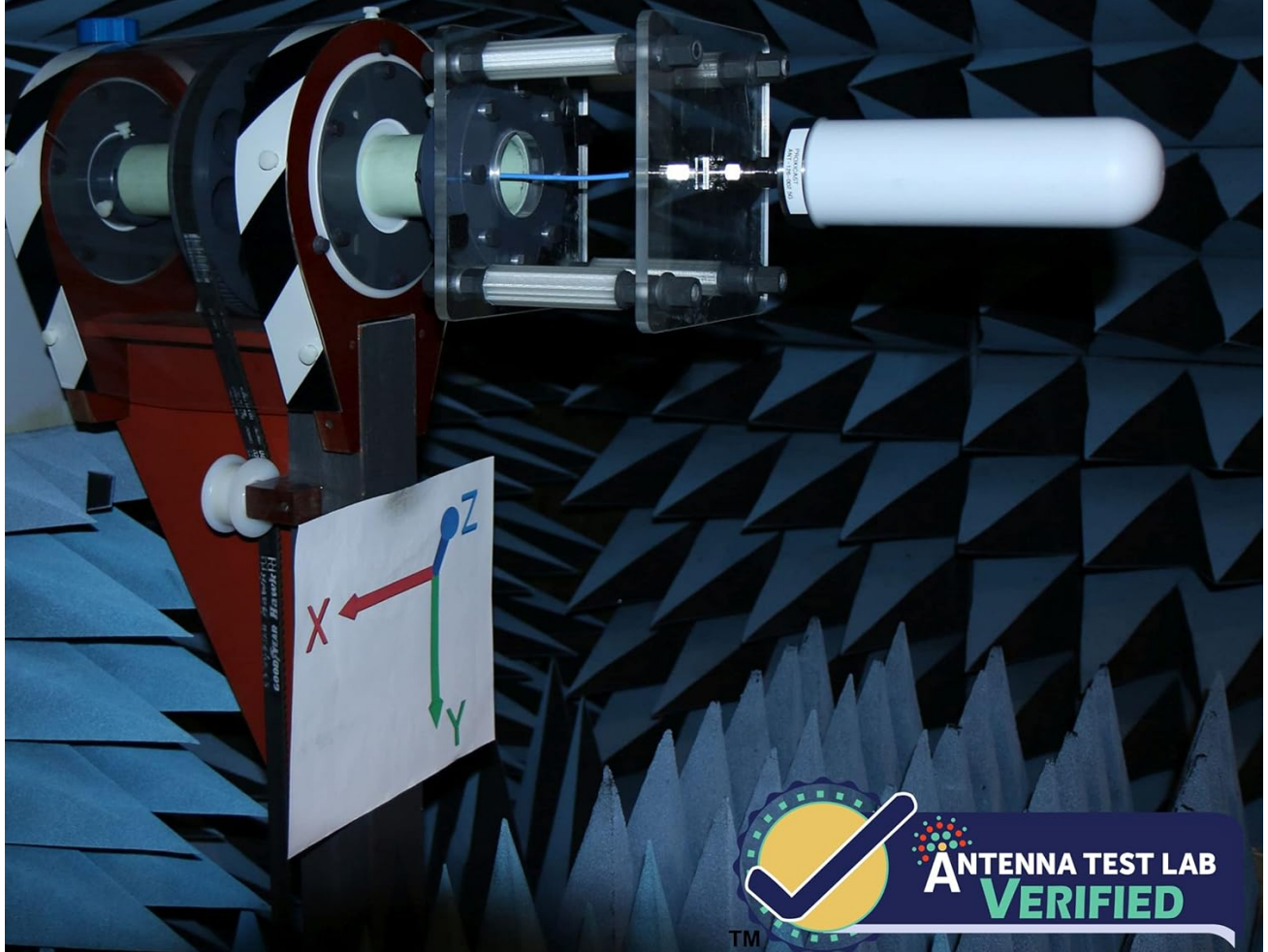






Figure 9: Antenna performance verified through independent lab testing.

## WARRANTY AND SUPPORT

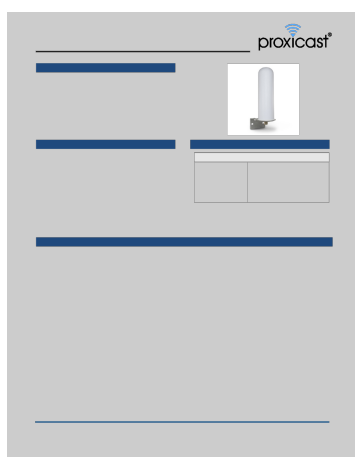
For information regarding product warranty, please refer to the official Proxicast website or contact their customer service directly. Protection plans may also be available for purchase separately.

**Customer Support:** If you require technical assistance or have questions about your Proxicast antenna, please visit the [Proxicast Store on Amazon](#) or their official website for contact information.

## Related Documents

	<p><a href="#">Proxicast ANT-120-006: 5-8 dBi Omni-Directional 3G/4G/LTE Aerial Antenna Datasheet</a></p> <p>Datasheet for the Proxicast ANT-120-006, an 11-inch, 5-8 dBi omni-directional 3G/4G/LTE aerial antenna with an integrated SMA male connector. Covers applications, features, specifications, and installation.</p>
	<p><a href="#">Proxicast ANT-211-002 Coaxial Lightning Arrester 0-6 GHz</a></p> <p>Proxicast ANT-211-002 is a coaxial lightning arrester designed for 0-6 GHz frequency range, featuring N-Female connectors. It protects outdoor antennas for 4G/LTE, 5G, Wi-Fi, and other radio systems. This document details its applications, product features, electrical and mechanical specifications, and contact information.</p>
	<p><a href="#">Proxicast ANT-233-002 Coaxial Lightning Arrester Datasheet</a></p> <p>Datasheet for the Proxicast ANT-233-002 Coaxial Lightning Arrester, detailing its features, applications, electrical and mechanical specifications for protecting RF equipment from lightning surges.</p>
	<p><a href="#">Using Google Gmail with Proxicast MSNSwitch</a></p> <p>A technical note detailing how to configure the Proxicast MSNSwitch (models UIS722b, UIS-622b) to send event log emails using Google's Gmail service, including steps for generating app passwords.</p>

## Documents - Proxicast – ANT-126-002



### [\[pdf\]](#) Installation Guide Specifications Datasheet

ANT 126 002 Datasheet 71 Proxicast s small light weight easy to install permanent mount omni directional antenna improves transmit and receive signals for all 3G 4G LTE xLTE v1 proxicast support files Specifications srsItd AfmBOooMrAz ZDrS2e9uboTeQ9bfLrMIVTQVWeldBL30w2doQBULxARj AfmBOOpYk7Bx5ywHDKiHotl tRf11AEGE NAAS6zmMk9HrHGD0vOuEg |||

**ANT-126-002** 10 dBi Omni-Directional Compact 3G/4G/LTE Antenna Applications 3G/4G/LTE Routers Modems Cellular Amplifiers Signal Challenged Locations Requiring High Gain Omni-Directional Antennas Installations Requiring an Aesthetic Solution Pole Wall Mount Options Product Features Compatib...

lang:en score:35 filesize: 1.68 M page\_count: 10 document date: 2019-03-12



[pdf] Installation Guide Specifications Datasheet

ANT 126 002 Datasheet Proxicast 39 s small light weight easy to install permanent mount omni directional antenna improves transmit and receive signals for all 3G 4G LTE xLTE AWS frequencies on Verizon AT T Sprint Mobile US Cellular Specifications proxicast shopping index dispatch attachments getfile attachment id 4 |||

**ANT-126-002** 10 dBi Omni-Directional Compact 4G/5G Antenna Applications 4G/LTE 5G Sub-6 Routers Modems Cellular Amplifiers Signal Challenged Locations Requiring High Gain Omni-Directional Antennas Installations Requiring an Aesthetic Solution Pole, Rail Wall Mount Options Product Feature...

lang:en score:34 filesize: 762.76 K page\_count: 11 document date: 2021-11-07



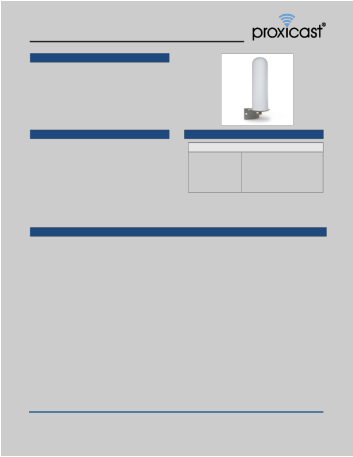
[pdf] Installation Guide Specifications Datasheet

ANT 126 002 Datasheet Proxicast s small light weight easy to install permanent mount omni directional antenna improves transmit and receive signals for all 4G LTE 5G Sub 61 Specifications proxicast shopping index dispatch attachments getfile attachment id 4 srsltid AfmBOor2z InFjbotGZ 7WHjBoZ1oBJVRgMt9gFRnQ2EVW80KZjEDgkB

AfmBOOpDtTablFeUiXndT6xP9kll1SSpNDb1sYgFLNg0 Q8uyTP4zyi ||| ||| ANT-126-002 10 dBi Omni-Directional Compact 4G/5G Antenna Applications 4G/LTE 5G Sub-6 Routers Modems Cellular Amplifiers Signal Challenged Locations Requiring High Gain Omni-Directional Antennas Installations Requiring an Aesthetic Solutio

**ANT-126-002** 10 dBi Omni-Directional Compact 4G/5G Antenna Applications 4G/LTE 5G Sub-6 Routers Modems Cellular Amplifiers Signal Challenged Locations Requiring High Gain Omni-Directional Antennas Installations Requiring an Aesthetic Solution Pole, Rail Wall Mount Options Product Feature...

lang:en score:34 filesize: 762.77 K page\_count: 11 document date: 2021-11-07



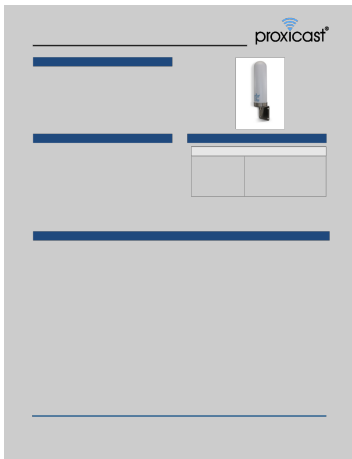
[pdf] Installation Guide Specifications Datasheet

ANT 126 002 Datasheet 71 Proxicast includes all 2G 3G 4G LTE Bands used worldwide and GPS 900MHz 2 4 GHz WiFi bands Peak Gain 10 dBi VSWR ≤ 1 8 Input Impedance 50 Ohm Polarization Vertical Max Power 100 W Ground Plane Not Required Lightning Protection Direct Mechanical Specifications Parameter Rating A1UaTaeDQtL images na ssl amazon I

**ANT-126-002** 10 dBi Omni-Directional Compact 3G/4G/LTE Antenna Applications 3G/4G/LTE Routers Modems Cellular Amplifiers Signal Challenged Locations Requiring High Gain Omni-Directional Antennas Installations Requiring an Aesthetic Solution Pole Wall Mount Options Product Features Compatib...

lang:en score:31 filesize: 1.68 M page\_count: 10 document date: 2019-03-12



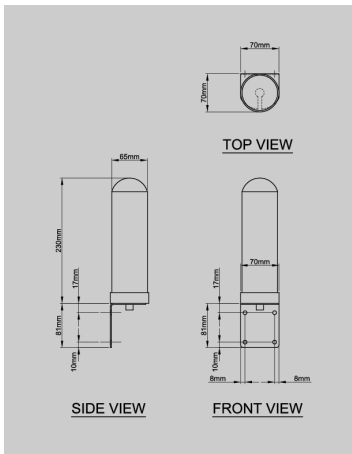


### [\[pdf\]](#) Installation Guide Datasheet

ANT 126 002 Datasheet 75 Proxicast receive signals for all 3G and 4G LTE xLTE AWS frequencies on Verizon AT T Sprint Mobile US Cellular Bell Mobility Rogers Telus Sasktel Telcel Movistar Digicel many other cellular operators worldwide This antenna is also suitable unlicensed 900 MHz ISM radio applications 2 4 GHz WiFi band It A1xrOCOV9sL images na ssl amazon I Author Created Date 9 6 2019 44 04 PM

**ANT-126-002** 10 dBi Omni-Directional Compact 3G/4G/LTE Antenna Applications 3G/4G/LTE Routers Modems Cellular Amplifiers Signal Challenged Locations Requiring High Gain Omni-Directional Antennas Installations Requiring an Aesthetic Solution Pole, Rail Wall Mount Options Product Features Co...

lang:en score:30 filesize: 1.69 M page\_count: 10 document date: 2019-09-06

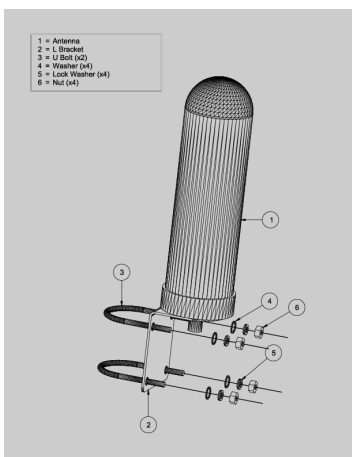


### [\[pdf\]](#) Dimension Guide

proxicast Created Date 8 14 2019 10 27 39 PM ANT 126 002 Dimensions shopping index dispatch attachments getfile attachment id 6 |||

...

lang:en score:15 filesize: 24.3 K page\_count: 1 document date: 2019-08-15



### [\[pdf\]](#) Parts List

proxicast Created Date 8 14 2019 10 24 41 PM ANT 126 002 Parts List shopping index dispatch attachments getfile attachment id 7 |||

...

lang:en score:14 filesize: 37.34 K page\_count: 1 document date: 2019-08-15