

## Manuals+

[Q & A](#) | [Deep Search](#) | [Upload](#)

manuals.plus /

› [CURT](#) /

› [CURT 58903 Custom Towed-Vehicle RV Wiring Harness for Dinghy Towing, Fits Select Jeep Wrangler JK](#)

## CURT 58903

# CURT 58903 Towed-Vehicle RV Wiring Harness Instruction Manual

Brand: CURT | Model: 58903

## PRODUCT OVERVIEW

The CURT 58903 Custom Towed-Vehicle RV Wiring Harness provides a seamless electrical connection between your towed vehicle and RV. This vehicle-specific, plug-and-play solution ensures that your towed vehicle's tail lights, turn signals, and brake lights synchronize with your RV's signals, enhancing safety during dinghy towing. Its design incorporates integrated block diodes to protect your vehicle's sensitive electronics from RV signals, preventing overheating and short circuits.



Image: The CURT 58903 RV Wiring Harness, coiled for storage, showcasing its primary components.

## Key Features:

- **STANDARD FIT:** Allows connection of the vehicle's taillights to the RV electrical system, providing a standard 4-flat connector.
- **VEHICLE-SPECIFIC:** Designed to fit select model years of the Jeep Wrangler JK for optimal compatibility.
- **RELIABLE CONNECTION:** Synchronizes your towed vehicle with your RV, enabling fast and easy connection of taillights, brake lights, and turn signals.
- **PLUG-AND-PLAY:** Eliminates the need for cutting and splicing, allowing direct plug-in to factory connectors.
- **PROTECTED CIRCUITS:** Features integrated block diodes to safeguard your vehicle's electronics from RV signals.

# FEATURES & BENEFITS

## Representative Image

**Connects towed vehicle to RV  
using a standard 4-way flat**

**Plug-and-play  
connectors**



**Plugs into existing  
sockets on vehicle**



Image: Visual representation of the wiring harness highlighting its plug-and-play connectors and connection to existing vehicle sockets.

# FEATURES & BENEFITS

Connects a towed vehicle to an RV  
using a standard 4-way flat



Image: An RV towing a compact car, demonstrating the application of the CURT wiring harness for dinghy towing.

## WHAT'S IN THE BOX

Your CURT 58903 RV Wiring Harness package includes all necessary components for installation:

- CURT 58903 Towed-Vehicle RV Wiring Harness
- 4-Way Flat Extension
- Connector Mounting Bracket
- Necessary Hardware (screws, zip ties)



# FEATURES & BENEFITS

Includes 4-way flat extension,  
mounting bracket and hardware

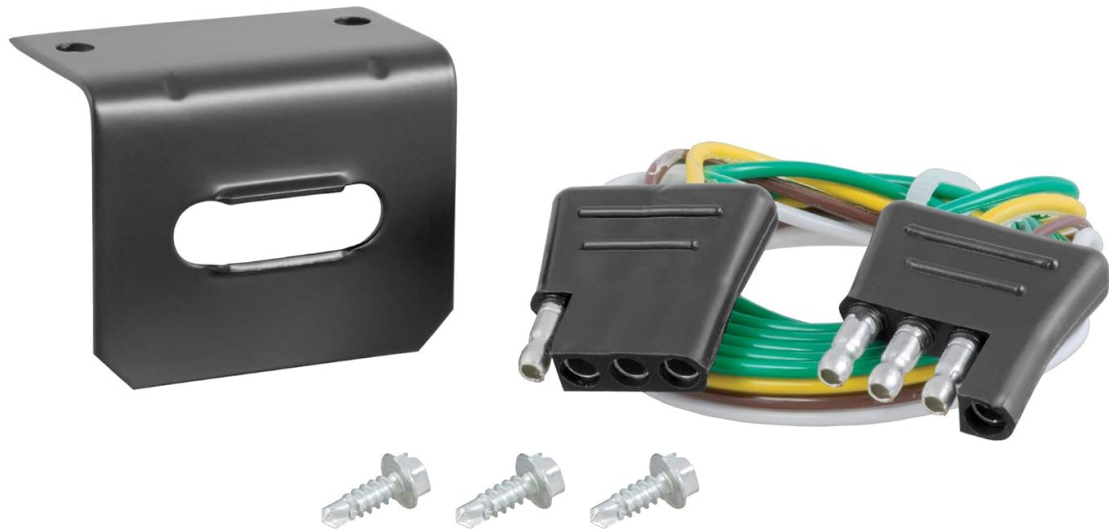


Image: The included connector mounting bracket and screws for securing the harness connection.

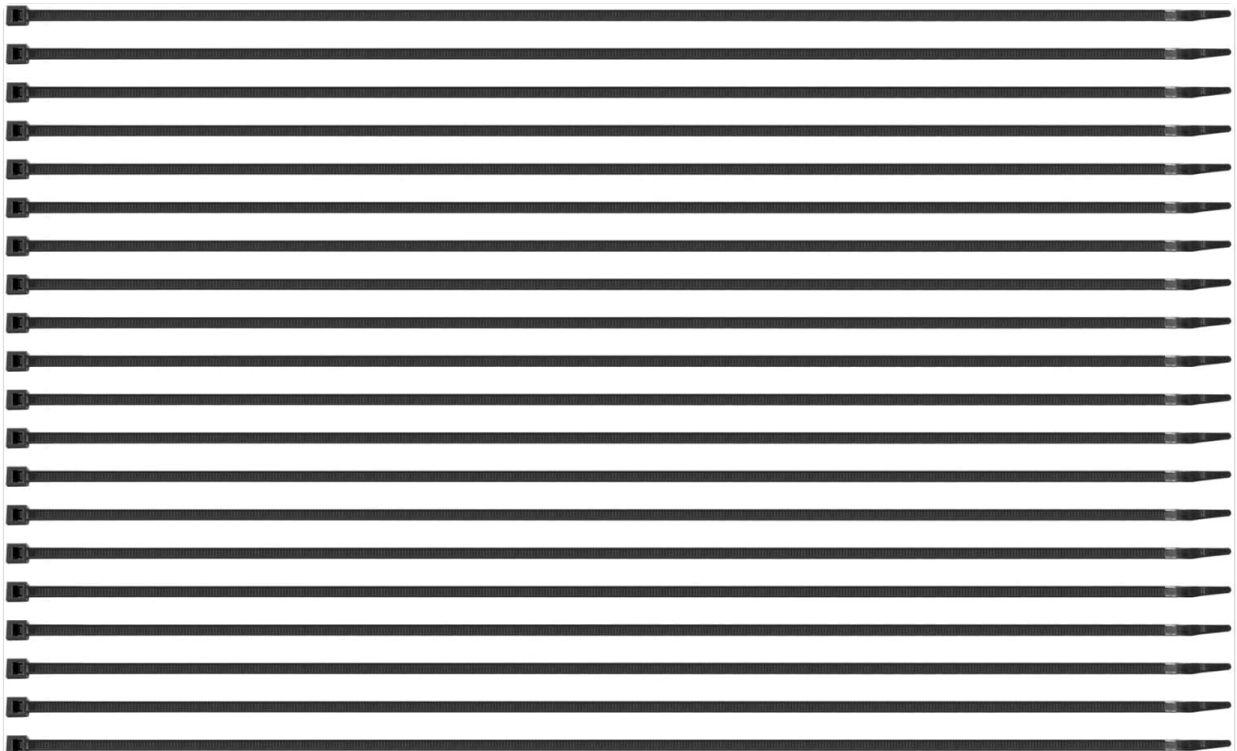


Image: A bundle of black zip ties, typically used for securing wiring during installation.

## SPECIFICATIONS

Brand	CURT
Model	58903
Material	Polyvinyl Chloride (PVC)
Item Dimensions (L x W x H)	8.5 x 8.5 x 4.5 inches
Item Weight	2.29 pounds (1.04 Kilograms)
Cable Type	4-way Flat
Connector Type	4-way Flat
Recommended Uses	Connect the vehicle's taillights to the RV electrical system
UPC	612314039425

## SETUP AND INSTALLATION

The CURT 58903 wiring harness is designed for a straightforward, plug-and-play installation. No cutting, splicing, or soldering is typically required. Follow these general steps:

1. **Prepare Vehicle:** Ensure your Jeep Wrangler JK is turned off and cool. Locate the existing wiring harnesses for your vehicle's tail lights.
2. **Connect Harness:** The CURT harness features vehicle-specific connectors. Simply plug these connectors directly into your vehicle's existing wiring system.
3. **Secure Wiring:** Route the wiring safely away from hot or moving parts. Use the provided zip ties to secure the harness along the vehicle's frame.
4. **Mount Connector:** Utilize the included connector mounting bracket and hardware to securely attach the 4-way flat connector to a convenient location at the rear of your vehicle.
5. **Connect to RV:** Once installed, connect the 4-way flat extension from your towed vehicle to the corresponding RV socket.

For detailed, step-by-step instructions specific to your vehicle's exact year and trim, please refer to the official [Installation Manual \(PDF\)](#).

# PLUG OUTPUT

## 4-Way Flat Trailer End

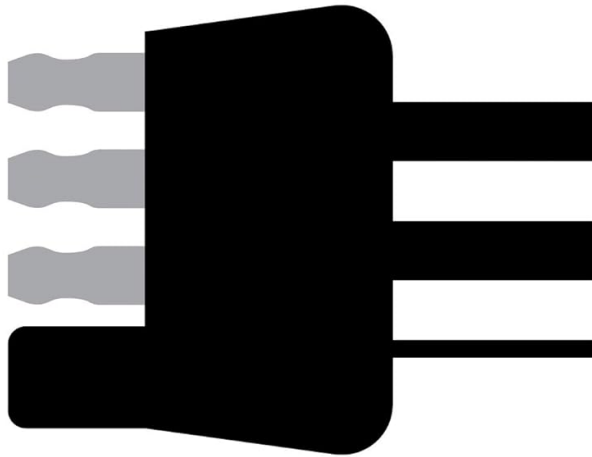


Image: Diagram illustrating the pin configuration of a 4-Way Flat Trailer End connector.

# PLUG OUTPUT

## 4-Way Flat Loop



Image: Diagram illustrating the pin configuration of a 4-Way Flat Loop connector.

## OPERATING INSTRUCTIONS

Once the CURT 58903 wiring harness is correctly installed and connected to your RV, its operation is automatic. The harness synchronizes the lighting functions of your towed Jeep Wrangler JK with your RV. When you activate your RV's turn signals, brake lights, or tail lights, the corresponding lights on your towed vehicle will also illuminate, ensuring visibility and compliance with towing regulations.

- Ensure the 4-way flat connector is securely plugged into both the towed vehicle and the RV before driving.
- Verify all lights (tail, brake, turn signals) on the towed vehicle are functioning correctly in sync with the RV's lights before each trip.

## MAINTENANCE

Regular maintenance of your CURT wiring harness will ensure its longevity and reliable performance:

- **Inspect Connections:** Periodically check all electrical connections, especially the 4-way flat connector, for corrosion, dirt, or damage. Clean as necessary.
- **Check Wiring:** Inspect the entire length of the harness for any signs of fraying, cuts, or pinching, particularly where it passes through tight spaces or near moving parts.
- **Secure Mounting:** Ensure the connector mounting bracket remains securely fastened to the vehicle.
- **Store Properly:** When not in use, keep the 4-way flat connector clean and protected from the elements. Consider using a dust cap or storing it in a dry place.

## TROUBLESHOOTING

If you experience issues with your towed vehicle's lighting system, such as non-functional stop lights or turn signals, consider the following troubleshooting steps:

- **Check Connections:** Ensure all plug-and-play connections are fully seated and secure. A loose connection is a common cause of intermittent or non-functional lights.
- **Inspect Fuses:** The CURT harness includes integrated block diodes to protect circuits. However, external factors or severe shorts can still cause vehicle fuses to blow. Consult your Jeep Wrangler JK's owner's manual (chassis manual) to locate the fuse boxes (typically under the dash and in the engine compartment) and identify the fuses related to tail lights, turn signals, and brake lights. Visually inspect these fuses for a broken filament. Replace any blown fuses with a new fuse of the correct amperage.
- **Test for Power:** If you have a circuit tester, you can check for power at various points in the wiring. Ensure the RV is providing power to the 4-way flat connector and that power is reaching the towed vehicle's lights.
- **Examine for Damage:** Look for any visible damage to the wiring harness itself, such as cuts, abrasions, or pinched wires, which could lead to a short circuit or open circuit.

## WARRANTY AND SUPPORT

For warranty information, technical support, or to purchase replacement parts, please visit the official CURT website or contact their customer service department. Keep your purchase receipt as proof of ownership.

## IMPORTANT SAFETY INFORMATION

**CALIFORNIA PROPOSITION 65 WARNING:** This product can expose you to chemicals including lead, which is known to the State of California to cause cancer and birth defects or other reproductive harm. For more information go to [www.P65Warnings.ca.gov](http://www.P65Warnings.ca.gov).