

JETBeam JET 3M PRO

JETBeam JET-IIIM 3M PRO Tactical Flashlight

USER MANUAL - MODEL: JET 3M PRO

1. Product Overview

The JETBeam JET-IIIM 3M PRO is a high-performance tactical flashlight designed for reliability and durability. Featuring a powerful Cree XP-L LED, it delivers a maximum output of 1100 lumens, making it suitable for various applications including law enforcement, defense, outdoor sports, and general illumination. Its robust construction from aero-grade aluminum alloy and advanced features ensure optimal performance in demanding environments.



Image: The JETBeam JET-IIIM 3M PRO Tactical Flashlight shown alongside its included holster, highlighting its compact and rugged design.

2. Key Features

- **High Performance LED:** Utilizes a Cree XP-L LED for a maximum output of 1100 lumens.
- **Dual Mode Interface:** Convenient two-mode interface by rotating the head, allowing for quick switching between tactical and general modes.
- **Reliable Tail Switch:** Features a tactical tail switch for reliable ON/OFF operation and momentary activation.
- **Advanced Power Management:** Built-in efficient power management circuit provides a maximum runtime of 280 hours.
- **Durable Construction:** Made from aero-grade aluminum alloy with a Type III hard-anodized anti-abrasive finish.
- **Impact Resistant:** Designed to withstand impacts up to 1.5 meters, conforming to US MIL-STD-810F.
- **Waterproof:** IPX-8 rated, submersible up to 2 meters.
- **Battery Versatility:** Compatible with RCR123, CR123, and 18650 batteries.
- **Crenulated Bezel:** Free stainless steel crenulated bezel protects key parts and can be used for emergency glass breaking.



JETBeam®

IIIM MILITARY
1100 LM



A new chapter of classic IIIM (the fifth version)

The first to use Cree newest **XP-L LED** - "The game-changing Cree® XLamp LED"
with performance increasing of 50% or more;
Higher efficiency and cool appearance keep IIIM always ahead.



JETBeam®

IIIM MILITARY
1100 LM



- Convenient two mode interface by rotating the head;
- Reliable tail switch control ON/OFF and different outputs;
- Tighten the head for tactical mode with turbo 1100 lumens;
- Loosen the head for general mode with 5 outputs;
- Strobe and memory function available.

Image: Illustration of the flashlight's two-mode interface, controlled by rotating the head, and the reliable tail switch.



JETBeam®



IIIIM MILITARY
1100 LM

**Performance increasing of 50% or more
with the newest Cree XP-L LED**

- The newest Cree XP-L LED – the first single-die LED with efficiency up to 200 lm/w at 350 mA;
- Max current 3A with output 1100 lumens – the brightest 1*18650 flashlight with highest efficiency.



JETBeam®



IIIIM MILITARY
1100 LM

**Max output 1100 lumens and beam
throw of 320 meters**

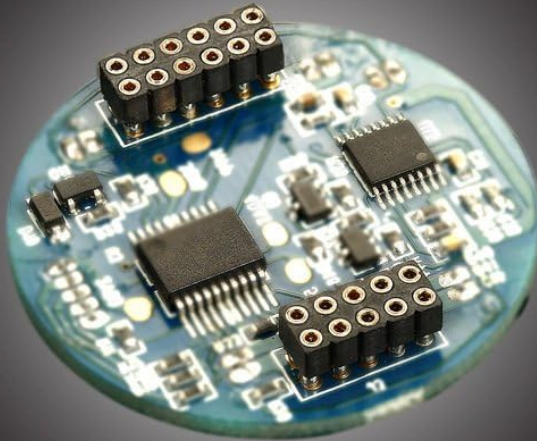
- Custom-designed high efficiency alloy reflector specially optimized for Cree XP-L LED achieves perfect mix of throw and flood;
- Toughened ultra-clear mineral glass with double-sided anti-reflective coating ensures the highest optical efficiency.

Image: A detailed view of the Cree XP-L LED, highlighting its efficiency and brightness capabilities.



JETBeam®

IIIIM MILITARY
1100 LM



- Built-in advanced efficient power management circuit, max runtime endures 280 hours;
- New circuit design providing double intelligent protections for LED and battery to maximize their lifespan and ensure safe use.



JETBeam®

IIIIM MILITARY
1100 LM



- Advanced circuit allows compatible for CR123, RCR123A and 18650 batteries.

Image: The flashlight held in a gloved hand, illustrating its ergonomic design and the impressive 320-meter beam throw.



JETBeam®

IIIIM MILITARY
1100 LM



- Free stainless steel crenulated bezel protects key parts on the head and also can be used in an emergency (e.g. break car window for escape).



JETBeam®

IIIIM MILITARY
1100 LM



- Free holster for easy carry and protection for flashlight

Image: A view of the advanced circuit board and various compatible battery types (CR123, RCR123, 18650), showcasing the flashlight's versatile power options.



JETBeam®

IIIIM MILITARY
1100 LM



Exquisite workmanship with ergonomic design

- Perfect size for comfortable grip: 150.1*38.5/25.4mm (length*head diameter/body diameter);
- Free Ti-coated two-way clip for tactical use;
- Free holster for easy carry and protection for flashlight;
- A specialized U-shaped tailcap facilitates operation with gloves and also prevent accidental activation.



JETBeam®

IIIIM MILITARY
1100 LM



Best option for tactical illumination

- Military-standard workmanship;
- Full tactical accessories for option.

For free: Tactical holster, Ti-coated clip, lanyard, rubber tail cap, O rings;

For option: Long-teeth bezel, filter (red, blue and green), remote switch, gun mount, high quality battery, intelligent charger.



Image: The flashlight submerged in water, illustrating its IPX-8 waterproof capability (submersible up to 2 meters).



JETBeam®

IIIM MILITARY
1100 LM

Application:

- Law enforcement, defense, military and hunting;
- Outdoor sports, hiking, camping, cave exploring and etc.



JETBeam®

IIIM MILITARY
1100 LM



Specification

| FL 1 STANDARD | Turbo (2*RCR123) | Turbo 18650 | High | Mid | Low | Ultralow |
|------------------|--|----------------|------------|------------|-----------|----------|
| | 1100 lumens | 980 lumens | 500 lumens | 180 lumens | 55 lumens | 1 lumens |
| | 0.6h | 3h | 5h | 11.5h | 40h | 280h |
| | 320 meters (Beam Distance) | | | | | |
| | 26000 cd (Max Intensity) | | | | | |
| | 1.5 meters (Impact Resistant) | | | | | |
| | IP-8, 2 meters under water (Waterproof Grade) | | | | | |
| Weight | 151g (without battery) | | | | | |
| Dimension | Head diameter 38.5mm, body diameter 25.4mm, total length 150.1mm | | | | | |

Note:

Stated data has been measured according to the international flashlight testing standards ANSI/NEMA FL1 by using one JETBeam 3.7V 2600mAh 18650 in the laboratory. The data may vary due to different battery and different environment conditions.

Image: The flashlight partially disassembled, showcasing its aircraft-grade aluminum construction and robust design elements.

3. Package Contents

Upon opening your JETBeam JET-IIIM 3M PRO package, please verify that all the following items are included:

- 1 x JETBeam JET-IIIM 3M PRO Flashlight
- 1 x Flashlight Holster
- 1 x Hand Rope (Lanyard)
- Spare O-rings

- Spare Tail Cap Button



Image: All included accessories: the flashlight, holster, hand rope, and spare parts.

4. Setup and Battery Installation

The JETBeam JET-IIIM 3M PRO requires one 18650 battery or two RCR123/CR123 batteries (not included). Follow these steps for proper battery installation:

1. Unscrew the tail cap of the flashlight by turning it counter-clockwise.
2. Insert the battery(ies) with the positive (+) terminal facing towards the head of the flashlight. Ensure correct

polarity to prevent damage.

3. Carefully screw the tail cap back on clockwise until it is securely tightened. Overtightening is not necessary but ensure a snug fit for proper electrical contact and waterproofing.

Note: Always use high-quality batteries. For optimal performance and safety, it is recommended to use protected 18650 batteries.

5. Operating Instructions

The JET-IIIM 3M PRO features a tactical tail switch and a head-rotation interface for mode selection.

5.1. Basic Operation (Tail Switch)

- **To Turn ON/OFF:** Fully press the tail switch until a "click" is heard.
- **Momentary ON:** Lightly press and hold the tail switch for momentary illumination. Release to turn off.

5.2. Mode Selection (Head Rotation)

The flashlight offers two main operating modes: Tactical Mode and General Mode.

- **Tactical Mode (Head Tightened):** When the flashlight head is fully tightened, the flashlight operates in Tactical Mode. In this mode, the tail switch cycles through Turbo (1100 lumens) and Strobe.
- **General Mode (Head Loosened):** Loosen the flashlight head slightly (approximately a quarter turn) to enter General Mode. In this mode, the tail switch cycles through five different output levels: Ultralow, Low, Mid, High, and Turbo.

5.3. Memory Function

The flashlight features a memory function that remembers the last used brightness level in General Mode. When you turn the flashlight back on in General Mode, it will activate at the previously used brightness level (excluding Strobe).

6. Maintenance

Proper maintenance ensures the longevity and optimal performance of your JETBeam JET-IIIM 3M PRO flashlight.

- **Cleaning:** Clean the flashlight body with a soft, damp cloth. Do not use harsh chemicals or abrasive materials.
- **Threads and O-rings:** Periodically lubricate the threads and O-rings with silicone grease to maintain waterproofing and smooth operation. Replace O-rings if they appear damaged or worn.
- **Battery Care:** Remove batteries if the flashlight will not be used for an extended period to prevent battery leakage and damage. Store batteries in a cool, dry place.
- **Contacts:** Keep the battery contacts and spring clean. If necessary, clean them with a cotton swab dipped in rubbing alcohol.

7. Troubleshooting

If you encounter issues with your flashlight, please refer to the following common problems and solutions before seeking professional assistance.

| Problem | Possible Cause | Solution |
|---|---|--|
| Flashlight does not turn on | Battery depleted or incorrectly inserted | Replace or recharge battery; ensure positive (+) end faces the head. |
| Flashlight flickers or turns off intermittently | Loose tail cap; dirty contacts; low battery | Tighten tail cap; clean battery contacts and threads; replace or recharge battery. |
| Light output is dim | Low battery; dirty lens | Replace or recharge battery; clean the lens with a soft cloth. |
| Head rotation for mode change is stiff | Lack of lubrication on threads | Apply a small amount of silicone grease to the threads of the head. |

8. Specifications

| Feature | Specification |
|---|--|
| LED | Cree XP-L LED |
| Maximum Output | 1100 Lumens |
| Beam Distance | 320 meters (Max) |
| Reflector | Precise aluminum reflector |
| Lens | Toughened ultra-clear mineral glass with anti-reflective coating |
| Material | Aero grade aluminum alloy |
| Finish | Type III hard-anodized anti-abrasive finish (Grey) |
| Compatible Batteries | 1 x 18650 or 2 x RCR123 / CR123 |
| Switch | Reliable tactical tail switch |
| Dimensions (Length x Head Dia. x Body Dia.) | 150.1mm x 38.5mm x 25.4mm |
| Weight (without battery) | 151g |
| Waterproof Rating | IPX-8 (submersible up to 2 meters) |
| Impact Resistance | 1.5 meters (US MIL-STD-810F) |

9. Warranty and Support

JETBeam products are manufactured to high quality standards. Specific warranty terms and conditions are typically provided with your product packaging or can be found on the official JETBeam website. Please retain your proof of





purchase for warranty claims.

For technical support, service, or warranty inquiries, please contact your authorized JETBeam dealer or visit the official JETBeam website for contact information.



© 2023 JETBeam. All rights reserved.
This manual is subject to change without notice.

Related Documents

| | |
|---|--|
|  | <p>JETBeam RRT-M2S White Laser Flashlight User Manual Features, Specs, Operation, Warranty</p> <p>Comprehensive user manual for the JETBeam RRT-M2S White Laser Flashlight. Details features, specifications, battery compatibility, output modes, operation, protection functions, maintenance, and warranty information.</p> |
|  | <p>JETBEAM E26 KUNAI UV Version Multi-Light Tactical Flashlight User Manual</p> <p>Comprehensive user manual for the JETBEAM E26 KUNAI UV Version tactical flashlight, featuring 1800 lumens, UV and green light modes, USB-C charging, and durable aviation aluminum construction. Includes specifications, operation instructions, battery indicators, and warranty information.</p> |
|  | <p>JETBEAM E26 KUNAI UV Version Tactical Flashlight User Manual</p> <p>Comprehensive user manual for the JETBEAM E26 KUNAI UV Version tactical flashlight, featuring Luminus SST40 LED, UV and green laser, multiple lighting modes, USB-C charging, and durable aviation aluminum construction. Learn about its features, operation, battery indicators, and warranty.</p> |
|  | <p>JETBeam RRT-M1X White Laser Flashlight User Manual</p> <p>User manual for the JETBeam RRT-M1X White Laser Flashlight, covering features, specifications, operation, maintenance, and warranty. Includes details on its 480-lumen output, 2300m beam throw, and use of 21700/18650 batteries.</p> |