

Conair 359R

INFINITI PRO CONAIR Travel Hair Dryer (Model 359R) Instruction Manual

INTRODUCTION

This manual provides detailed instructions for the safe and effective use, maintenance, and troubleshooting of your INFINITI PRO CONAIR Travel Hair Dryer, Model 359R. Designed for portability and powerful performance, this compact dryer features an AC motor, ionic technology, and multiple heat and speed settings for efficient hair drying and styling.

IMPORTANT SAFETY INFORMATION

Please read all instructions before using this appliance. Keep these instructions for future reference.

- Keep out of reach of children.
- Do not use while bathing.
- Keep away from water.
- Keep the power plug and cord away from heated surfaces.
- Do not use near flammable materials.
- Always unplug the appliance immediately after use.
- Never block the air openings of the appliance or place it on a soft surface, such as a bed or couch, where the air openings may be blocked. Keep the air openings free of lint, hair, and the like.

PRODUCT FEATURES

- **Mini Hair Dryer:** Compact and lightweight design, ideal for travel and easy storage.
- **Frizz-Free Drying:** Features Ionic technology for enhanced shine and reduced frizz.
- **Powerful AC Motor:** Delivers strong airflow for up to 50% faster drying time and up to 3x longer motor life compared to standard DC motor models.
- **Advanced Settings:** Offers 3 heat settings (Hot, Cool, Warm) and 2 speed settings (High, Low) for customized styling.
- **Cold Shot Button:** A true cold shot button helps to lock in curls, waves, and styles for lasting hold.

- **Concentrator Attachment:** Includes a concentrator for smooth, pinpoint styling and precise airflow control.
- **Easy Maintenance:** Removable filter prevents lint buildup, ensuring easy cleaning and optimal performance.
- **Convenient Storage:** Integrated hang ring for easy access and storage.



Image: Key features of the INFINITI PRO CONAIR Travel Hair Dryer, including its AC motor, removable filter, cold shot button, and multiple heat and speed settings.



AC motor delivers
powerful airflow for
up to 50% faster drying time*
and 3x longer dryer life.*

*When compared to Conair® DC motor hair dryer and styler models.

Image: Detail illustrating the powerful airflow from the AC motor, designed for faster drying and extended dryer life.



Up to 75% less
frizz with ionic
technology.**

**When compared to hair dryers
with natural ion generation.

Image: Visual representation of up to 75% less frizz achieved with the dryer's ionic technology.

PACKAGE CONTENTS

- INFINITI PRO CONAIR Travel Hair Dryer (Model 359R)
- Concentrator Attachment

What's in the box



Concentrator

Mighty Mini Dryer

Image: The hair dryer and its concentrator attachment as included in the package.

SETUP

1. Unpack the hair dryer and all accessories. Ensure all packaging materials are removed.
2. Inspect the appliance for any visible damage. Do not use if damaged.
3. Ensure your electrical outlet matches the voltage requirements of the hair dryer (120V AC in the US).
4. Attach the concentrator nozzle if desired for focused airflow. Align the concentrator with the dryer's barrel and push firmly until it clicks into place.



Image: The INFINITI PRO CONAIR Travel Hair Dryer shown with its concentrator attachment.

OPERATING INSTRUCTIONS

Powering On and Off

Plug the hair dryer into an electrical outlet. The appliance is ready for use. To turn off, slide the speed switch to the "OFF" position.

Adjusting Heat and Speed Settings

The INFINITI PRO CONAIR Travel Hair Dryer features 3 heat settings (Hot, Cool, Warm) and 2 speed settings (High, Low), along with an Off position. Use the switches located on the handle to select your desired combination.

- **Heat Settings:** Slide the upper switch to select Hot, Cool, or Warm.
- **Speed Settings:** Slide the lower switch to select High, Low, or Off.

Using the Cold Shot Button

Press and hold the blue 'Cold' button to instantly deliver a burst of cool air. This feature helps to set your style and add shine.

General Drying Techniques

For best results, towel-dry hair to remove excess moisture. Section your hair and direct the airflow from roots to ends. Use the concentrator attachment for precise styling and smoothing.



Lock in your style
with custom heat
settings for every
hair type.

Image: The control switches for heat and speed settings, allowing for custom styling.

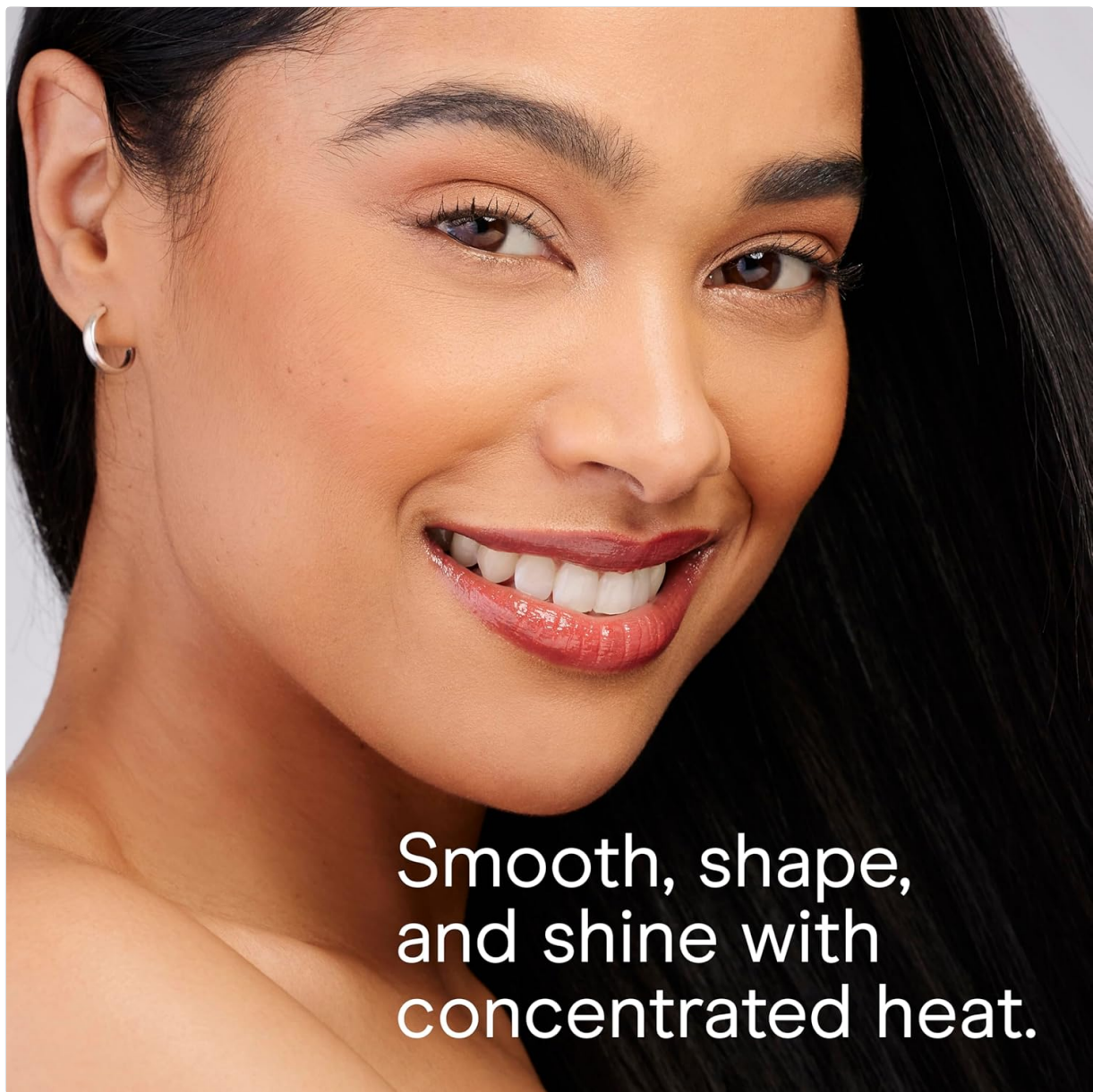


Image: Demonstrating the use of the concentrator attachment for smooth, shaped, and shiny hair.

MAINTENANCE

Cleaning the Removable Filter

To maintain optimal performance and extend the life of your hair dryer, regularly clean the removable rear filter. Twist or pull off the rear cap to access the filter. Remove any accumulated lint or hair with a soft brush or vacuum cleaner. Replace the filter securely.

Important: Always unplug the appliance before cleaning.

TROUBLESHOOTING

No Power

- Check if the power cord is securely plugged into a working electrical outlet.
- Verify that the outlet is receiving power by testing it with another appliance.
- Check the reset/test buttons on the plug. Press 'Reset' if it has tripped.

Reduced Airflow or Overheating

- Unplug the dryer and allow it to cool down for several minutes.
- Clean the rear air filter as described in the 'Maintenance' section. A clogged filter can restrict airflow and cause overheating.

Unusual Noises

- Unplug the dryer and check the rear filter for any obstructions. Remove any foreign objects.
- If unusual noises persist after cleaning, discontinue use and contact customer support.

PRODUCT SPECIFICATIONS

Feature	Detail
Product Dimensions	5.91 x 3.07 x 11.13 inches; 1.19 Pounds
Item Model Number	359R
UPC	074108369222
Manufacturer	Conair
ASIN	B0747S767P
Brand	Conair
Color	Black Travel Size
Material	Ceramic
Wattage	1600 watts
Power Source	Corded Electric
GTIN	074108369222

WARRANTY AND SUPPORT

This INFINITI PRO CONAIR Travel Hair Dryer is backed by a limited warranty. For specific warranty details, please refer to the documentation included with your product or visit the official [Conair website](#).





For customer support, product registration, or to inquire about replacement parts, please contact Conair customer service through their official channels.

Related Documents - 359R



[Conair 1875 Watt Cord Keeper Styler: User Manual and Styling Guide](#)

Comprehensive guide for the Conair 1875 Watt Cord Keeper Styler, including important safety instructions, operating procedures, maintenance, and styling tips for professional results at home.

	<p><u>Conair Infiniti Pro 1875W AC Motor Hair Dryer: User Manual and Styling Guide</u></p> <p>Comprehensive user manual and styling guide for the Conair Infiniti Pro 1875W AC Motor Hair Dryer (Model 259). Includes safety instructions, operating procedures, maintenance tips, styling techniques, and warranty information.</p>
	<p><u>Conair Aircare Hot Air Styling Kit BC171NCSR User Manual and Safety Guide</u></p> <p>Comprehensive user manual for the Conair Aircare Hot Air Styling Kit (Model BC171NCSR). Provides detailed safety instructions, operating procedures, maintenance guidelines, and warranty information for this 1000-watt styling tool.</p>
	<p><u>InfinitiPRO by Conair BC7 Hot Paddle Brush: Instructions and Styling Guide</u></p> <p>Comprehensive guide for the InfinitiPRO by Conair BC7 Hot Paddle Brush, covering safety instructions, operating procedures, styling tips, maintenance, and warranty information. Learn how to use the diamond-infused ceramic technology and ionic features for smooth, shiny hair.</p>
	<p><u>Conair 1-Inch Ceramic Flat Iron Model CS3: Instruction and Styling Guide</u></p> <p>Comprehensive guide for the Conair 1-Inch Ceramic Flat Iron Model CS3, covering user maintenance, safety instructions, operating procedures, styling tips, and warranty information.</p>
	<p><u>Conair Hot Sticks Instant Heat Curling Iron CD88TCSR: Instruction and Styling Guide</u></p> <p>Learn how to use and maintain your Conair Hot Sticks Instant Heat Curling Iron (Model CD88TCSR). This guide covers features, safety, operation, styling tips, temperature settings, and warranty information for optimal hair styling.</p>