

Manuals+

[Q & A](#) | [Deep Search](#) | [Upload](#)

manuals.plus /

> [VORAGA](#) /

> [Instruction Manual for VORAGA Radiator Grille for Suzuki SV 650 N \(1999-2002\)](#)

VORAGA Suzuki SV 650 N

Instruction Manual for VORAGA Radiator Grille

Model: Suzuki SV 650 N (1999-2002)

INTRODUCTION

This manual provides comprehensive instructions for the installation, operation, and maintenance of your new VORAGA Radiator Grille. Designed specifically for the Suzuki SV 650 N models from 1999 to 2002, this product offers optimal protection for your motorcycle's radiator while enhancing its aesthetic appeal. Please read this manual thoroughly before installation to ensure proper fitment and long-lasting performance.

SAFETY INFORMATION

Always prioritize safety when working on your motorcycle. Follow these general safety guidelines:

- Ensure the motorcycle is stable and securely supported before beginning any work.
- Allow the engine and radiator to cool completely before handling to prevent burns.
- Wear appropriate personal protective equipment, such as gloves and eye protection.
- If you are unsure about any step, consult a qualified mechanic.
- Keep small parts away from children.

PACKAGE CONTENTS

Please verify that all items are present in the package:

- 1 x VORAGA Radiator Grille (for Suzuki SV 650 N, 1999-2002)

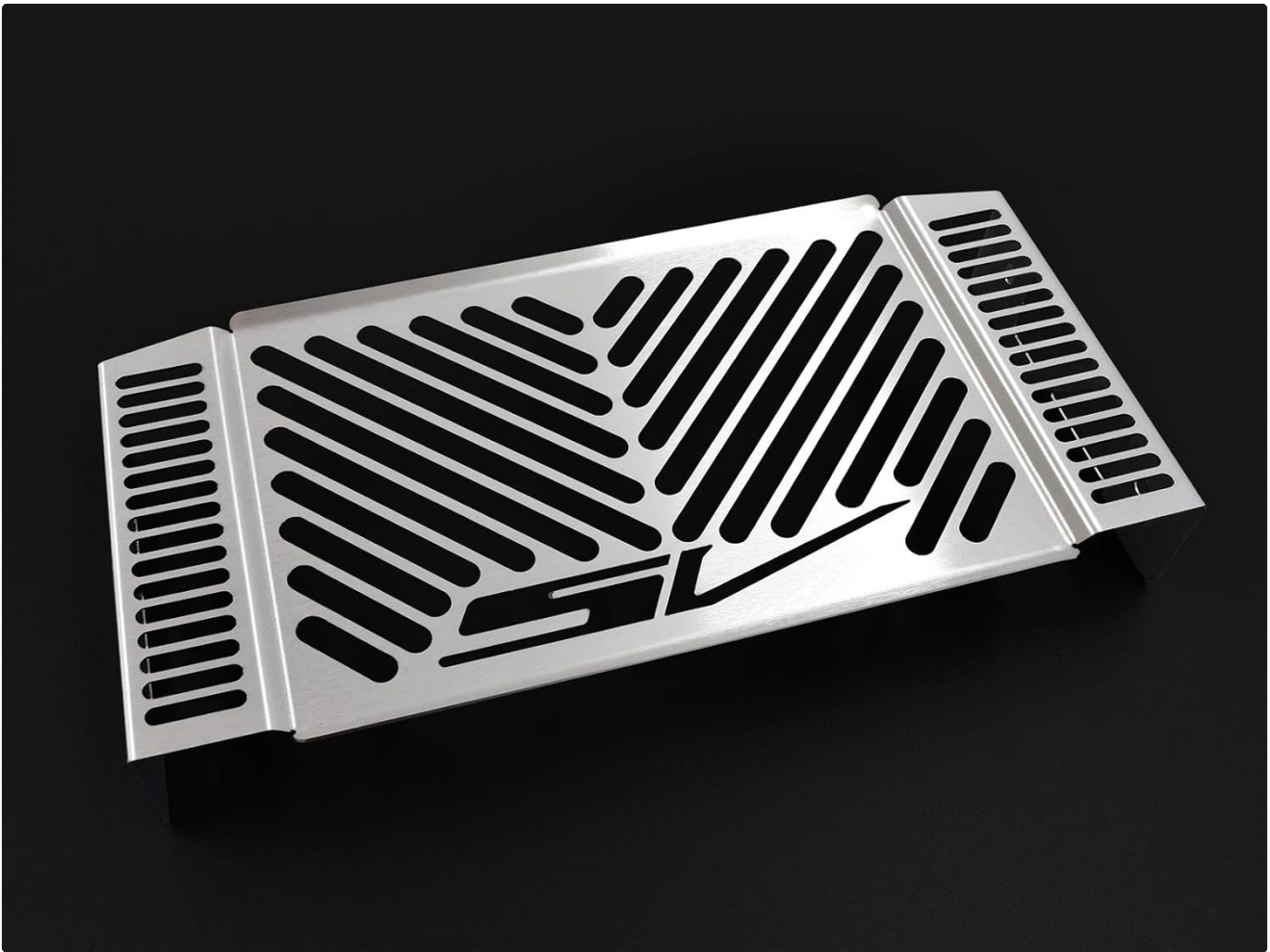


Image showing the VORAGA Radiator Grille, a silver-colored metal mesh with a stylized 'SV' logo cutout in the center. The grille features horizontal and diagonal slats for airflow and protection, with perforated side sections for mounting.

INSTALLATION (SETUP)

The VORAGA Radiator Grille is designed for straightforward installation, attaching to the original mounting points without requiring modifications to the motorcycle's fairing parts.

Required Tools (Not Included):

- Basic hand tools (e.g., screwdrivers, wrenches) as needed for accessing original mounting points.

Installation Steps:

1. Park your Suzuki SV 650 N on a level surface and ensure it is stable. Turn off the engine and allow it to cool down completely.
2. Locate the existing radiator mounting points. Depending on your specific motorcycle setup, you may need to remove minimal fairing components to gain access.
3. Carefully position the VORAGA Radiator Grille in front of the radiator, aligning its mounting tabs with the original mounting points on your motorcycle.
4. Secure the grille using the motorcycle's original fasteners or any provided hardware (if applicable, though the product description states it uses original points). Ensure all connections are snug but do not overtighten.
5. Double-check that the grille is securely fastened and does not obstruct any moving parts or airflow.
6. Reinstall any fairing components that were removed.

Note: This product is designed to fit the Suzuki SV 650 N models from 1999 to 2002. Compatibility with other models or years is not guaranteed.

OPERATION AND FUNCTION

The VORAGA Radiator Grille functions as a protective barrier for your motorcycle's radiator. Its primary purpose is to:

- **Protect against debris:** Prevents road debris, stones, and other foreign objects from directly impacting and damaging the delicate fins of the radiator.
- **Maintain airflow:** Designed with an optimal pattern to allow sufficient airflow to the radiator, ensuring efficient engine cooling.
- **Enhance aesthetics:** Provides a stylish and finished look to the front of your motorcycle.

No specific operational steps are required after installation, as the grille functions passively as a protective component.

MAINTENANCE

To ensure the longevity and appearance of your VORAGA Radiator Grille, follow these maintenance tips:

- **Regular Cleaning:** Periodically clean the grille to remove accumulated dirt, dust, and insect residue. Use a soft cloth or sponge with mild soap and water. Avoid abrasive cleaners or harsh chemicals that could damage the finish.
- **Inspect for Damage:** Regularly inspect the grille for any signs of damage, such as bends, cracks, or loose mounting points. Address any issues promptly to maintain optimal protection.
- **Check Fasteners:** Occasionally check that all mounting fasteners are secure. Vibrations from riding can sometimes loosen connections over time.

TROUBLESHOOTING

Most issues related to the radiator grille are minor and can be resolved easily.

Problem	Possible Cause	Solution
Grille is loose or rattling.	Mounting fasteners are not tight enough.	Check and tighten all mounting fasteners. Ensure they are properly aligned with original points.
Grille appears bent or damaged.	Impact from road debris or improper handling during installation.	If minor, gently reshape. For significant damage, replacement may be necessary to ensure proper protection.

Problem	Possible Cause	Solution
Difficulty installing.	Incorrect alignment or attempting to force fit.	Re-read installation steps. Ensure the grille is correctly oriented and aligned with original mounting points. Do not force. Verify product compatibility with your motorcycle model and year.

SPECIFICATIONS

Feature	Detail
Brand	VORAGA
Manufacturer	IBEX
Compatible Model	Suzuki SV 650 N
Compatible Years	1999-2002
Manufacturer Part Number	10001751
Color	Silver
Material	Metal
Installation	Attaches to original points, no fairing modification needed.

WARRANTY INFORMATION

Specific warranty details for this product may vary. Please refer to the original purchase documentation or contact the seller/manufacturer directly for information regarding warranty coverage, terms, and conditions. Generally, products are covered against manufacturing defects for a limited period from the date of purchase.

CUSTOMER SUPPORT

If you have any questions, require assistance with installation, or encounter issues not covered in this manual, please contact your retailer or the manufacturer directly. When contacting support, please have your product model number (10001751) and purchase details ready.

For further assistance, you may visit the VORAGA brand page on Amazon or contact the seller "ibexparts" through the Amazon platform.

