

Manuals+

[Q & A](#) | [Deep Search](#) | [Upload](#)

manuals.plus /

› [BlueFire](#) /

› [BlueFire Wireless Endoscope Instruction Manual](#)

BlueFire ZN81BF-AU-123

BlueFire Wireless Endoscope Instruction Manual

Model: ZN81BF-AU-123

Brand: BlueFire

INTRODUCTION

This manual provides comprehensive instructions for the setup, operation, and maintenance of your BlueFire Semi-Rigid Flexible Wireless Endoscope. This device is designed for visual inspection in hard-to-reach areas, offering high-definition imaging and video recording capabilities via a wireless connection to your smartphone or tablet. Please read this manual carefully before use to ensure proper operation and to prevent damage.

PACKAGE CONTENTS

- 1 x BlueFire Wireless Endoscope (with integrated camera and cable)
- 1 x USB to Micro USB Charging Cable
- 1 x Side Mirror attachment
- 1 x Hook attachment
- 1 x Magnet attachment
- 1 x User Manual



Image: The BlueFire Wireless Endoscope package includes the main unit with its flexible yellow cable, the black WiFi transmission box, and various accessories. A smartphone screen is shown displaying an image of gears, indicating the device's inspection capabilities.

SPECIFICATIONS

Length	33FT (10m)
Camera Diameter	8mm
Sensor	2.0 megapixels CMOS
Resolution	1280x720, 640x480, 320x240
View Angle	60°
LED Light	6 pcs adjustable
Focal Distance	3cm - 8cm
Transmission Distance	Within 15m
Working Time	About 1 hour (full charge)
Power Source	500mAh built-in rechargeable battery

Power In for Recharging	DC 5V
Supported Photo Format	JPEG
Supported Video Format	AVI
Supported System	Android 4.4+ / iOS 6+
Waterproof Grade	IP67 (camera and cable only)

UPGRADE CHIP & HD CAMERA



Equipped with upgraded chip and 2MP camera, the endoscope can offer 30fps HD capture.







30fps



2MP



8.0mm



IP67

Image: An exploded view diagram of the endoscope camera head, illustrating its internal components including the upgraded chip and 2-megapixel HD camera, capable of 30 frames per second capture. Icons indicate 30fps, 2MP, 8.0mm diameter, and IP67 waterproof rating.

SETUP GUIDE

1. **Charge the Endoscope:** Before first use, ensure the endoscope's WiFi box is fully charged. Connect the provided USB charging cable to the Micro USB port on the WiFi box and plug the other end into a 5V DC power source. The green LED indicator will be on during charging and will turn off when fully charged. A full charge typically takes about 1-2 hours.

Your browser does not support the video tag.

Video: This segment demonstrates the initial charging process of the BlueFire Wireless Endoscope. It shows the device connected to a

power source and highlights the LED indicator that signifies charging status.

2. **Download the App:** Scan the QR code provided in the manual or search for "WIFI VIEW" in your smartphone's app store (Google Play Store for Android or Apple App Store for iOS). Install the application.

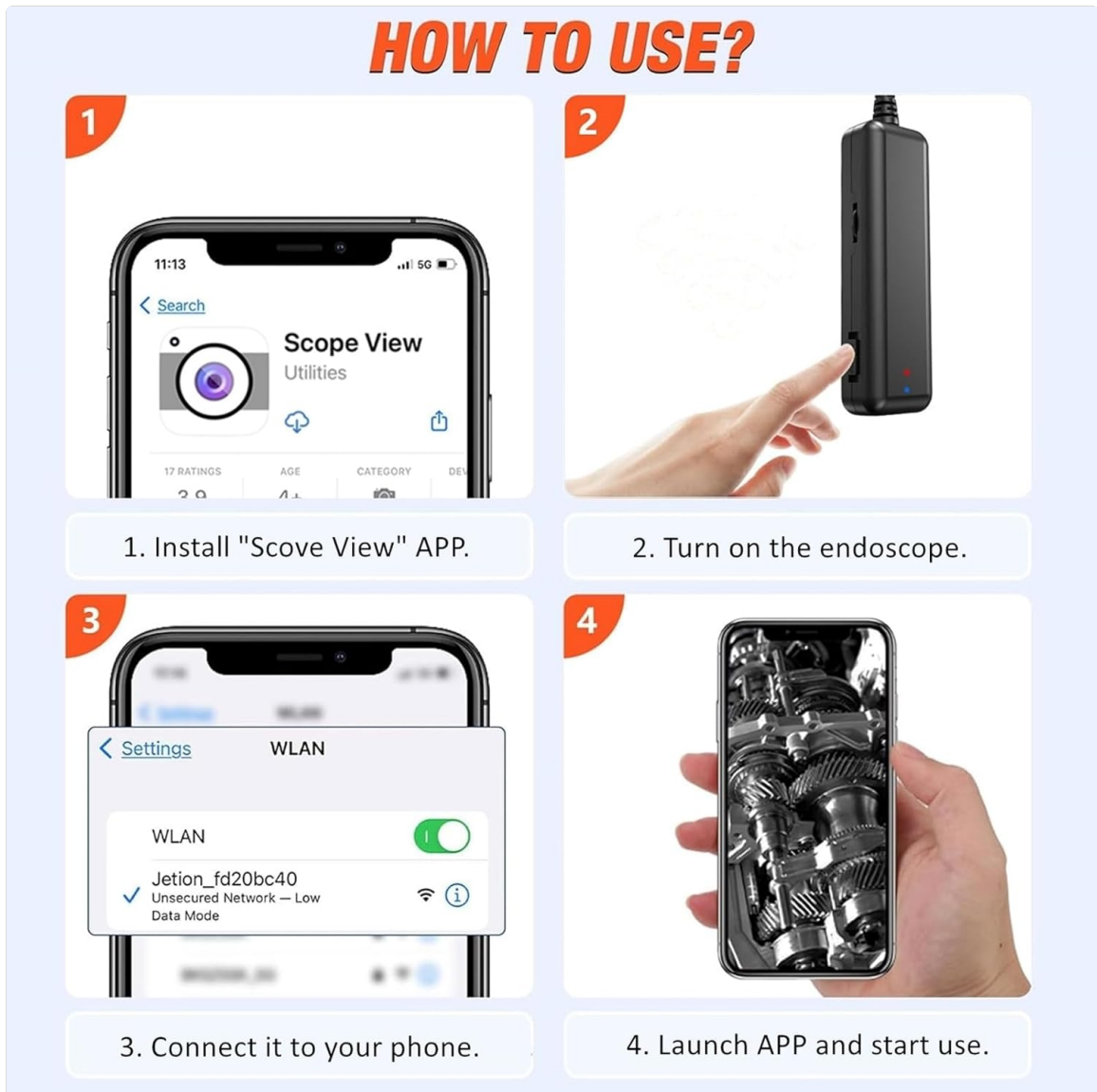


Image: A visual guide illustrating the four steps to set up the endoscope: 1. Install "Scope View" APP, 2. Turn on the endoscope, 3. Connect to its WiFi network, and 4. Launch the APP to begin use.

3. **Power On the Endoscope:** Slide the ON/OFF switch on the WiFi box to the "ON" position. The red power LED and blue WiFi signal indicator will light up.
4. **Connect to WiFi:** Go to your smartphone's WiFi settings. Find the WiFi network named "Jetion_ xxxx" (where xxxx is a unique identifier) and connect to it. The default password is "12345678". Once connected, the blue WiFi light on the endoscope will stop flickering and remain solid, indicating a successful connection.
5. **Launch the App:** Open the "WIFI VIEW" app. The live video feed from the endoscope camera should now appear on your screen.

OPERATING INSTRUCTIONS

- **Adjusting LED Lights:** The endoscope camera features 6 adjustable LED lights. Use the roller wheel on the WiFi box to increase or decrease the brightness to suit your inspection environment.
- **Capturing Images and Videos:** Within the "WIFI VIEW" app, you will find dedicated buttons for

taking still photos and recording videos. Captured media will be saved directly to your smartphone's gallery.

- **Using Accessories:** The included side mirror, hook, and magnet attachments can be affixed to the camera head for specialized tasks, such as retrieving dropped items or viewing at different angles.



Image: A detailed diagram of the BlueFire WiFi box, labeling its components such as the LED brightness controller, power and WiFi indicators, power button, and Micro-USB charging port. Below, the included accessories (magnet, mirror, hook) are shown with examples of their use.

- **Semi-Rigid Cable:** The semi-rigid cable allows for better control over the camera's direction, making it easier to navigate through tight or complex spaces.

APPLICATIONS

The BlueFire Wireless Endoscope is a versatile tool suitable for a wide range of inspection tasks, including but not limited to:

- Plumbing Inspection (e.g., clogged drains, pipe integrity)
- HVAC Inspection (e.g., ductwork, vents)
- Vehicle & Boat Repair (e.g., engine components, confined spaces)
- Machine Equipment Maintenance
- Home Appliance Checks (e.g., washing machines, ovens)
- Wall Inspection (e.g., checking for wires, insulation, pests)

WIDE APPLICATION

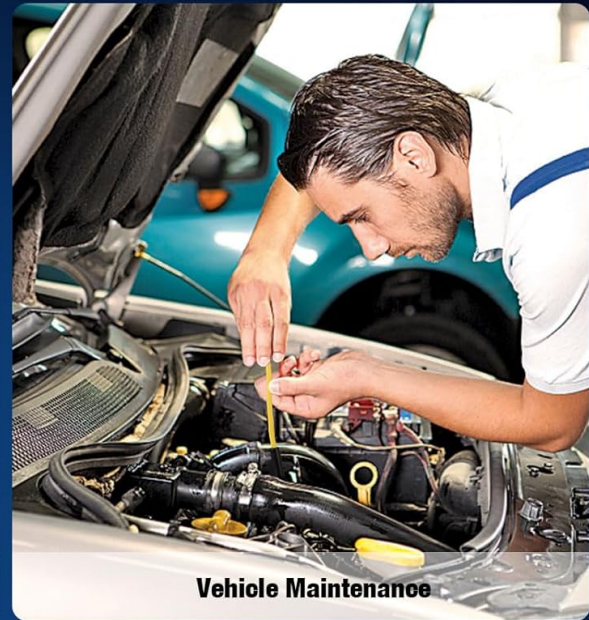


Image: A collage showcasing diverse applications of the endoscope, such as inspecting air conditioners, performing vehicle maintenance, repairing washing machines, checking home appliances, and inspecting pipelines.

MAINTENANCE

- **Cleaning:** After use, gently wipe the camera lens and cable with a soft, dry cloth. If necessary, a slightly damp cloth can be used.
- **Water Resistance:** The camera and cable are IP67 waterproof, meaning they can withstand immersion in water up to 1 meter for 30 minutes. However, the WiFi box is NOT waterproof. Avoid submerging the WiFi box. If using underwater, limit the duration to under 10 minutes.
- **Storage:** Store the endoscope in a cool, dry place, away from direct sunlight and extreme temperatures.
- **Battery Care:** Recharge the battery regularly, even if not in frequent use, to maintain battery health.

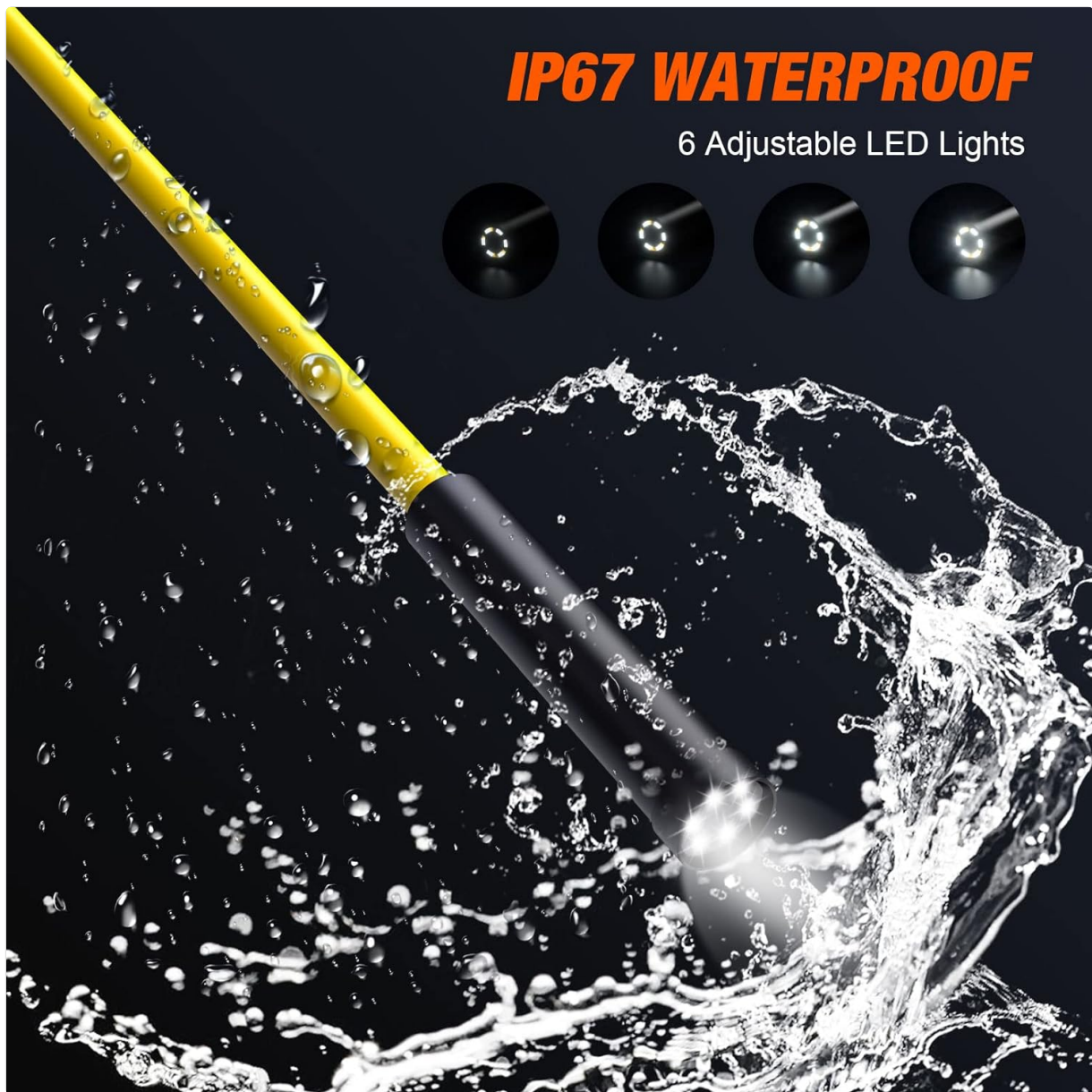


Image: The endoscope camera head is shown being splashed with water, emphasizing its IP67 waterproof capability. The image also highlights the six adjustable LED lights surrounding the camera lens.

TROUBLESHOOTING

- **No Image/Image Freezing:**

- Ensure the WiFi box is fully charged.
- Check if the WiFi connection is stable. Try restarting the WiFi box and re-entering the password.
- Exit and restart the "WIFI VIEW" app.
- Ensure the distance between the endoscope and your smart device is within 15 meters without any obstacles.
- Keep away from or turn off other strong WiFi sources that may interfere with the signal.

- **Cannot Connect to WiFi:**

- Verify that the endoscope is powered on and the blue WiFi indicator is solid.
- Double-check the WiFi password "12345678". Do NOT reset the WiFi password yourself, as this may render the endoscope useless.
- Ensure your device's WiFi permissions are turned on for the "WIFI VIEW" app.

- **Blurry Image:**

- Adjust the LED brightness using the roller wheel on the WiFi box.
- Ensure the camera lens is clean and free from debris.
- The optimal focal distance is 3cm-8cm. Adjust the camera's distance from the object being inspected.

WARRANTY & SUPPORT

BlueFire products are designed for reliability and performance. For warranty information, technical support, or any inquiries not covered in this manual, please refer to the product packaging or contact BlueFire customer service through the official channels provided at the point of purchase. Please retain your proof of purchase for warranty claims.