

Philips 472027

Philips Hue White A19 Smart LED Bulb (Model 472027) - User Manual

Your Guide to Smart Lighting

1. INTRODUCTION

The Philips Hue White A19 Smart LED Bulb (Model 472027) enhances your home with soft white lighting that can be dimmed and controlled remotely. This smart bulb allows you to automate your lighting, making it appear as if you are home even when you are not, and to set convenient timers. It integrates seamlessly into your existing Philips Hue system, offering a versatile and energy-efficient lighting solution.



Image 1.1: Philips Hue White A19 Smart LED Bulbs (Pack of 4)

This manual provides essential information for setting up, operating, and maintaining your Philips Hue White A19 Smart LED Bulbs.

Video 1.1: Introduction to Philips Hue Lighting System. This video provides an overview of the Philips Hue system, including remote control, scheduling, and personalization features.

2. WHAT'S IN THE BOX

Your Philips Hue White A19 Smart LED Bulb package includes:

- 4 x Philips Hue White A19 60W Equivalent Dimmable LED Smart Bulbs

Note: A Philips Hue Hub (Model: 458471) is required for the full Hue experience and to enable features like voice control and remote access. The Hue Hub is sold separately.

3. SETUP AND INSTALLATION

Follow these steps to install and set up your Philips Hue White A19 Smart LED Bulbs:

1. **Install the Bulbs:** Ensure the power is off at the light switch. Screw the Philips Hue White A19 Smart LED Bulbs into your desired light fixtures.
2. **Power On:** Turn the power back on at the light switch.
3. **Connect to Hue Bridge:** If you do not have a Philips Hue Hub, please acquire one (Model: 458471) and set it up according to its instructions. The Hue Hub connects to your home Wi-Fi router.
4. **Download the App:** Download the Philips Hue mobile app from your device's app store (available for iOS and Android).
5. **Pair Bulbs:** Open the Philips Hue app. Navigate to 'Settings' and then 'Light setup'. Tap the '+' icon to add new lights. The app will search for your new bulbs. If a bulb is not found automatically, you can manually enter its serial number (found on the bulb itself) and tap 'Search'.
6. **Confirm Connection:** Once found, tap on your new light in the app. The bulb will blink to confirm the connection.
7. **Assign to Room:** Name your new light and assign it to a room within the app. This allows for organized control and integration into existing scenes and timers.

Easy to connect to your Hue system

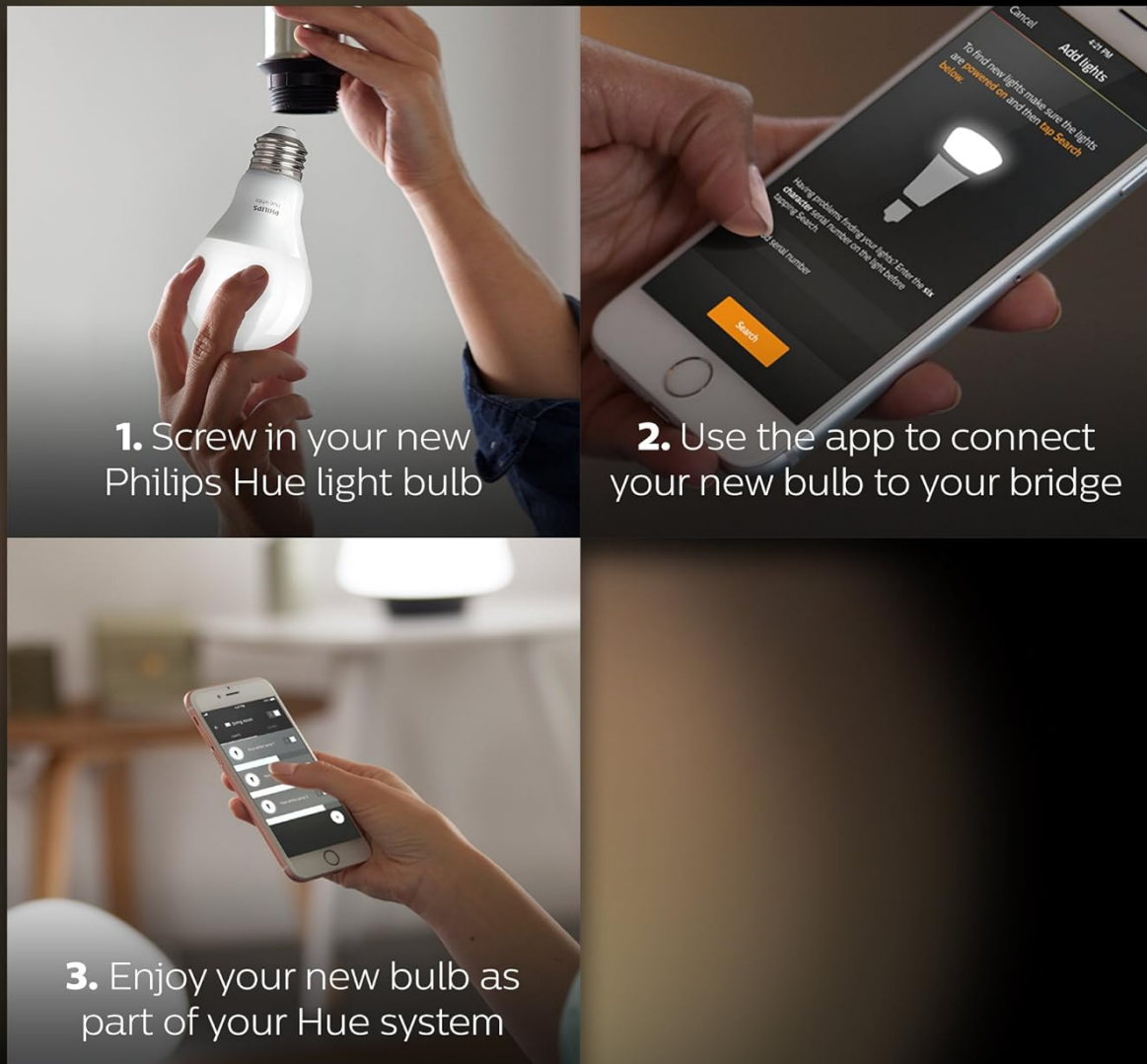


Image 3.1: Easy connection steps for Philips Hue bulbs.

Video 3.1: Installing Philips Hue Smart Bulbs. This video demonstrates the process of adding new Philips Hue bulbs to your system using the mobile application.

4. OPERATING YOUR SMART BULBS

Once installed and paired with your Philips Hue Hub, you can control your bulbs using various methods:

4.1. Philips Hue App Control

The Philips Hue app provides comprehensive control over your lighting system:

- **On/Off Control:** Turn lights on or off from anywhere with a Wi-Fi connection.
- **Dimming:** Adjust the brightness to your desired level.
- **Scheduling:** Set up daily schedules to automate when your lights turn on or off, or to create routines that simulate presence when you are away.

Use a smart device to **control your lights**

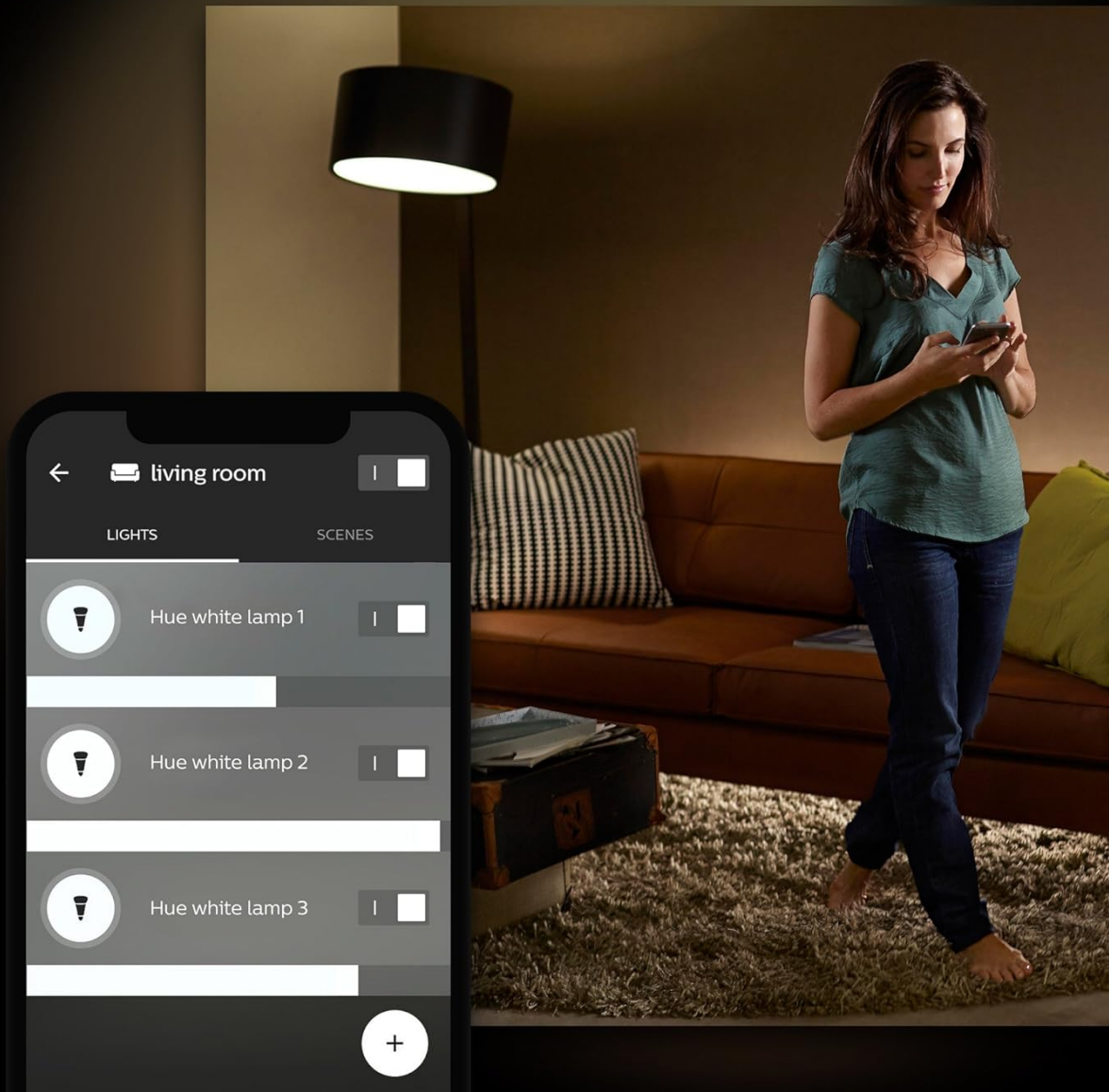


Image 4.1: Controlling lights using the Philips Hue app on a smart device.

Set daily schedules to **make it seem you are home** even when you are not



Image 4.2: Setting daily schedules within the Philips Hue app.

4.2. Voice Control

The Philips Hue White A19 bulbs are compatible with popular voice assistants when connected to a Philips Hue Hub:

- **Amazon Alexa:** Use voice commands with your Alexa-enabled devices.
- **Apple HomeKit:** Control your lights using Siri on your Apple devices.
- **Google Assistant:** Manage your lighting with voice commands through Google Assistant.

4.3. Smart Home Integration

Expand your smart home capabilities by connecting your Philips Hue system to other smart home devices and platforms, such as Amazon Echo Plus, Nest, or SmartThings systems. You can also integrate with accessories like the Hue Dimmer Switch, Hue Tap, or Hue Motion Sensor (sold separately) for additional control options.

Expand the possibilities of Hue

Smart Home Partners and Hue Sync



Hue Sync

IFTTT

logitech



R A Z E R

XFINITY Home

vivint.
SmartHome



Image 4.3: Philips Hue integration with various smart home partners.

5. MAINTENANCE

To ensure optimal performance and longevity of your Philips Hue White A19 Smart LED Bulbs:

- **Cleaning:** Disconnect power before cleaning. Use a soft, dry cloth to gently wipe the bulbs. Avoid using liquid or abrasive cleaners.
- **Disposal:** These LED bulbs contain electronic components and should be recycled according to local regulations. Do not dispose of them in household waste.
- **Operating Environment:** Use the bulbs in dry indoor environments within their specified temperature range. Avoid exposure to excessive moisture or extreme temperatures.

6. TROUBLESHOOTING

If you encounter issues with your Philips Hue White A19 Smart LED Bulbs, consider the following:

- **Bulb Not Responding:** Ensure the light switch is in the 'ON' position. Philips Hue bulbs require continuous

power to function as smart bulbs. If the switch is turned off, the bulb loses power and cannot be controlled remotely.

- **Connectivity Issues:** Verify that your Philips Hue Hub is properly connected to your router and powered on. Check your Wi-Fi connection. If issues persist, try restarting your Hue Hub and router.
- **Flickering:** Ensure the bulbs are not connected to a traditional dimmer switch, as this can cause flickering or damage. Philips Hue bulbs are designed to be dimmed via the Hue app or compatible smart dimmers.
- **Bulb Not Found During Setup:** Double-check the serial number if manually entering. Ensure the bulb is powered on and within range of your Hue Hub.
- **Voice Control Not Working:** Confirm that your voice assistant device (e.g., Alexa, Google Home) is properly linked to your Philips Hue account and that the Hue skill/service is enabled.

For further assistance, refer to the Philips Hue support website or contact customer service.

7. SPECIFICATIONS






Feature	Detail
Brand	Philips
Model Name	Hue White A19
Item Model Number	472027
Light Type	LED
Bulb Shape Size	A19
Bulb Base	E26 Medium
Wattage	9.5 watts
Incandescent Equivalent Wattage	60 Watts
Brightness	840 Lumen
Light Color	Soft White
Color Temperature	2700 Kelvin
Voltage	120 Volts
Control Method	Voice
Special Feature	Dimmable (with Hub or Echo Plus), Instant On, Needs recycling
Indoor/Outdoor Usage	Indoor
Product Dimensions	2.25 x 2.25 x 4.25 inches
Item Weight	7.2 ounces
UPC	046677472023

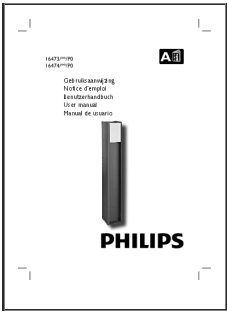
8. WARRANTY AND SUPPORT

For detailed warranty information, product support, and frequently asked questions, please visit the official Philips Hue website or contact Philips customer service directly. Keep your proof of purchase for warranty claims.

© 2023 Philips. All rights reserved.

Related Documents - 472027

	<p>Philips Hue Personal Wireless Lighting Quick Start Guide</p> <p>Get started with your Philips Hue personal wireless lighting system. This guide provides setup instructions, safety information, warranty details, and technical specifications for Philips Hue products.</p>
	<p>Philips Hue Smart Lighting User Manuals: LED Bulb & Dimmer Switch</p> <p>Comprehensive user guide for Philips Hue White & Color Ambiance LED Smart GU10 Bulb and Philips Hue Smart Dimmer Switch with Remote, covering features, specifications, and setup.</p>
	<p>Philips Hue Smart Lighting Products: Tap Dial Switch and White A19 LED Bulb User Manual</p> <p>Comprehensive user manual and product information for Philips Hue smart lighting devices, including the Tap dial switch and the White A19 LED Smart Bulb. Details features, specifications, installation, and connectivity options for a smart home lighting experience.</p>
	<p>Philips Hue Outdoor Lighting Fixture and Smart Bulb Installation Guide</p> <p>Comprehensive guide for installing Philips Hue outdoor lighting fixtures and setting up Philips Hue A19 smart LED bulbs, including safety instructions, setup steps, and Hue system overview. Covers installation, wiring, bulb setup, and smart features.</p>
	<p>Philips Ultinon Pro7000 SI LED Festoon Bulb: Enhanced Interior Lighting</p> <p>Discover the Philips Ultinon Pro7000 SI LED festoon bulbs (LUM11860CU70X1/20) for your car. Offering superior brightness (6000 K), uniform light distribution, and a 5,000-hour lifespan, these bulbs enhance driving safety and interior style with easy plug-and-play installation.</p>



[Philips Hue Turaco Outdoor Lamp Installation and User Manual](#)

Comprehensive guide for installing and setting up the Philips Hue Turaco outdoor lamp. Includes step-by-step instructions, component lists, connectivity details, and support information for smart home lighting.