

Intex 26175EH

INTEX 26175EH Easy Set Inflatable Swimming Pool Set: 18ft x 48in Instruction Manual

BRAND: INTEX | MODEL: 26175EH

INTRODUCTION

This manual provides comprehensive instructions for the setup, operation, and maintenance of the INTEX 26175EH Easy Set Inflatable Swimming Pool Set. This 18ft x 48in inflatable pool is designed for ease of use and enjoyment. Please read all instructions carefully before assembly and use to ensure safety and optimal performance.



Figure 1: The INTEX 26175EH Easy Set Inflatable Swimming Pool Set.

IMPORTANT SAFETY INFORMATION

Always prioritize safety when using the swimming pool. Failure to follow these instructions may result in serious injury or death.

- **Adult Supervision:** Never leave children unattended in or near the pool.

- **No Diving:** This is an above-ground pool. Do not dive or jump into the pool.
- **Level Ground:** Ensure the pool is set up on firm, level ground. Uneven surfaces can cause the pool to collapse, leading to injury or water spillage.
- **No Running:** Prohibit running or horseplay around the pool area to prevent slips and falls.
- **Puncture Prevention:** Keep sharp objects away from the pool liner. The pool is made with puncture-resistant 3-Ply PVC material, but care should still be taken.
- **Chemical Handling:** Follow all instructions for pool chemicals. Keep chemicals out of reach of children.
- **Proposition 65 Warning:** This product may contain chemicals known to the State of California to cause cancer and birth defects or other reproductive harm.



Figure 2: Pool dimensions and capacity.

PACKAGE CONTENTS

The INTEX 26175EH Easy Set Inflatable Swimming Pool Set includes the following components:

- Easy Set Pool (18ft x 48in)
- 1500 GPH Cartridge Filter Pump
- Removable Ladder
- Pool Cover
- Ground Cloth
- Repair Patch Kit

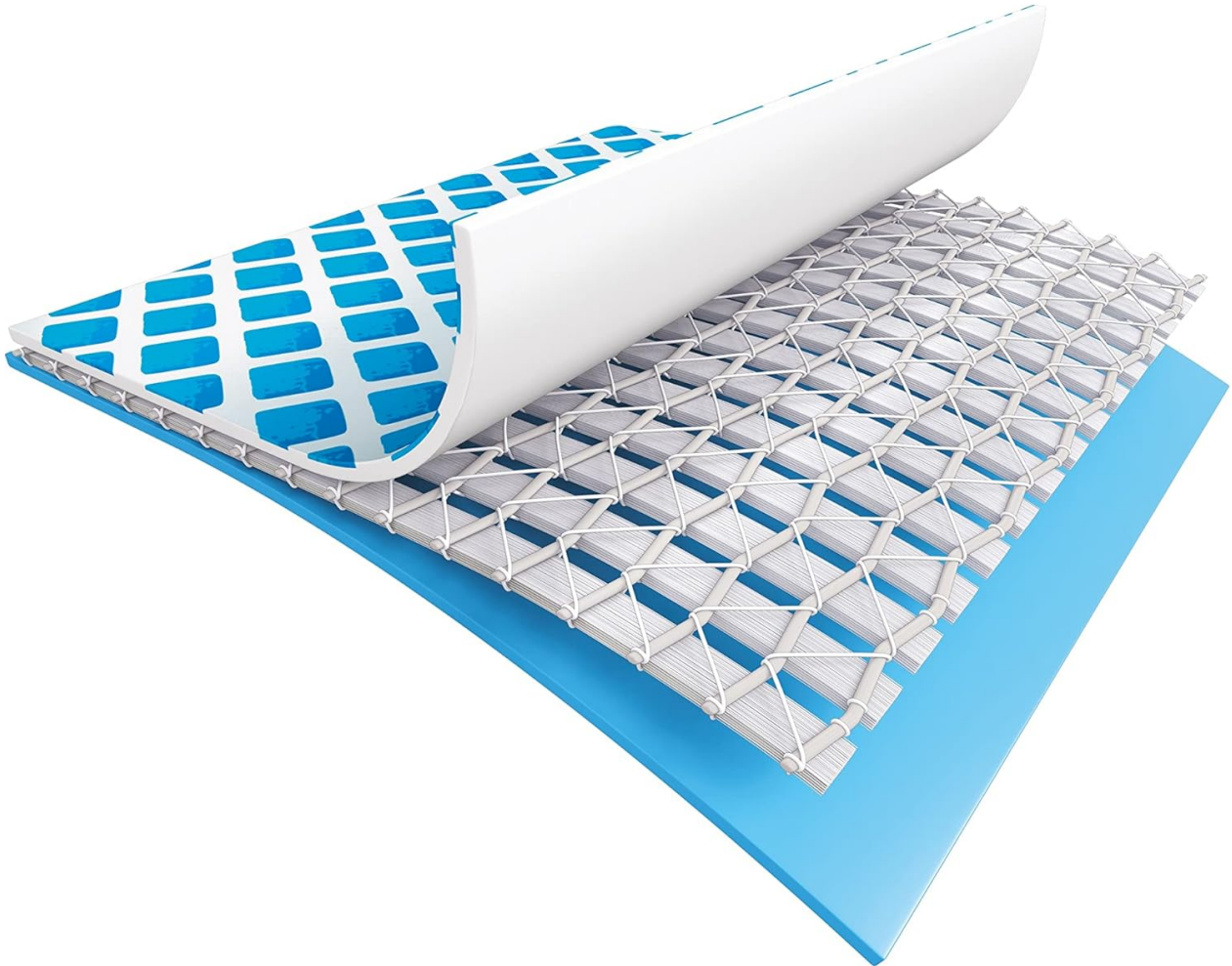


Figure 3: Included 1500 GPH Cartridge Filter Pump.

SETUP INSTRUCTIONS

Setting up your Easy Set pool is quick and straightforward, typically taking around 30 minutes before filling with water.

1. **Prepare the Site:** Choose a firm, level area in your yard. Clear any debris, rocks, or sharp objects. Spread the included ground cloth over the chosen area.
2. **Lay Out the Pool:** Unfold the pool liner and spread it evenly over the ground cloth. Ensure the drain plug is positioned away from any structures or areas where water drainage could cause damage.
3. **Inflate the Top Ring:** Locate the inflation valve on the top ring of the pool. Use an air pump (not included) to inflate the top ring until it is firm but not over-inflated.
4. **Begin Filling with Water:** Start filling the pool with water. As the water level rises, the pool walls will begin to stand upright. Smooth out any wrinkles in the bottom of the pool as it fills.

5. **Connect Filter Pump:** Once the pool is partially filled and the walls are stable, connect the 1500 GPH Cartridge Filter Pump according to the pump's instruction manual. Ensure all hoses are securely fastened.
6. **Install Ladder:** Assemble the removable ladder as per its instructions and place it securely over the pool edge.
7. **Continue Filling:** Fill the pool to the recommended water level, typically just below the inflated top ring.



Figure 4: Visual guide for initial pool setup steps.



Figure 5: Proper connection of the filter pump hoses to the pool.

OPERATING THE FILTER PUMP

The included 1500 GPH Cartridge Filter Pump is essential for maintaining clean and clear pool water. It features HydroAeration Technology for improved circulation and filtration.

- **Initial Start-up:** After connecting the pump and filling the pool, ensure all air is purged from the system before turning on the pump. Refer to the pump manual for detailed instructions on air purging.
- **Daily Operation:** Run the filter pump for a recommended duration each day (e.g., 4-6 hours) to ensure proper water circulation and filtration. The pump may include a timer function for automated operation.
- **HydroAeration Technology:** This technology injects air into the water, accelerating circulation and causing fine particles to clump together, making them easier for the filter to capture. This also improves water clarity and increases negative ions.

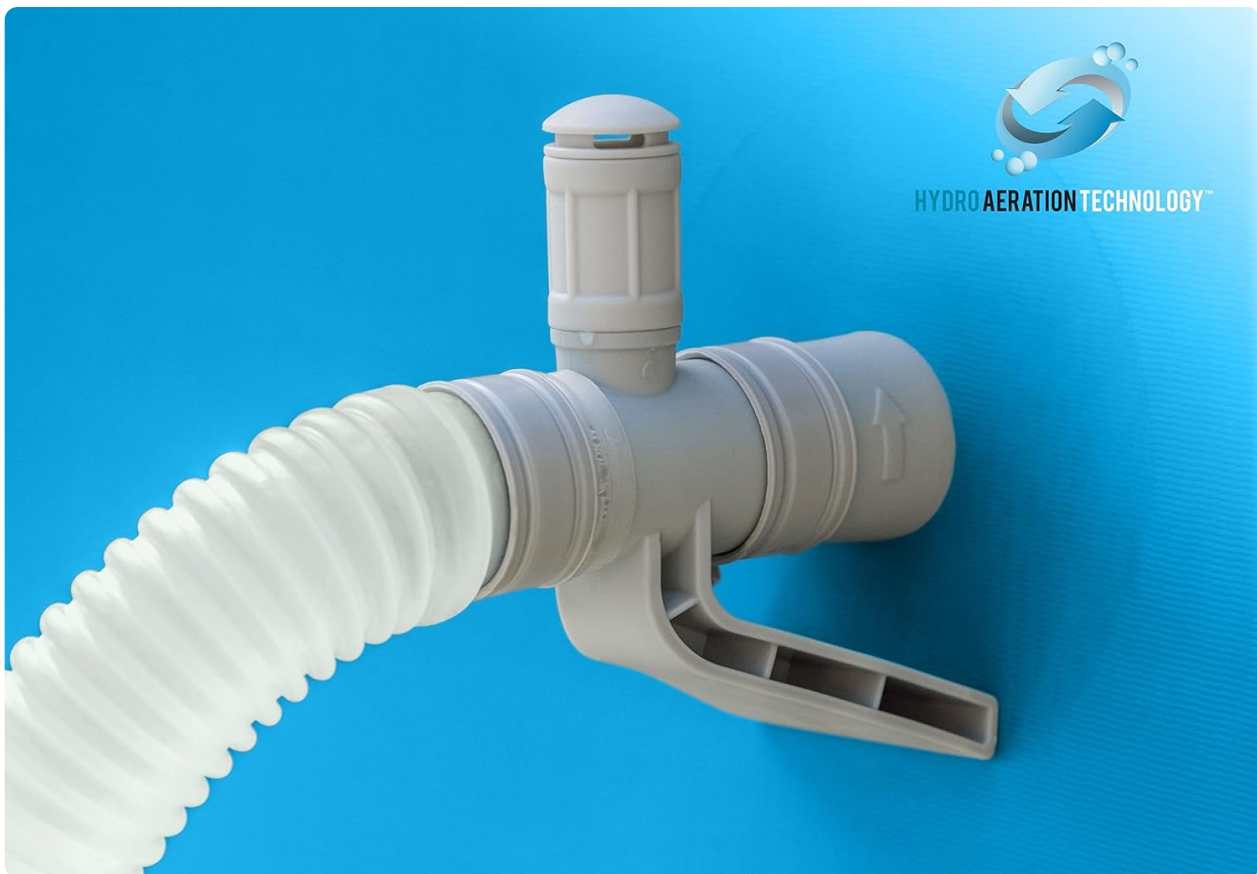


Figure 6: HydroAeration Technology in action, enhancing water quality.

MAINTENANCE

Regular maintenance is crucial for extending the life of your pool and ensuring a safe swimming environment.

Filter Pump Maintenance

- **Clean Filter Cartridge:** Turn off the pump before cleaning. The filter cartridge should be rinsed with a garden hose every few days, or more frequently depending on usage and water condition. Replace the cartridge every 2-4 weeks.
- **Check Hoses:** Regularly inspect hoses for cracks, leaks, or blockages.

Pool Water Chemistry

- **Test Water Regularly:** Use pool test strips to check pH, chlorine, and alkalinity levels. Adjust chemicals as needed to maintain recommended ranges.
- **Chlorination:** Use appropriate pool chlorine to sanitize the water. Follow manufacturer's instructions for dosage.

Pool Liner and Accessories

- **Cleaning:** Use a pool skimmer net to remove debris from the water surface. A pool vacuum (sold separately) can be used to clean the bottom.
- **Puncture Repair:** In case of a small puncture, use the included repair patch kit. Ensure the area is clean and dry before applying the patch.
- **Pool Cover:** Use the included pool cover when the pool is not in use to keep out debris and reduce

water evaporation.

- **Ladder Maintenance:** The removable ladder has a coated steel frame to prevent rust. Clean regularly and store in a dry place when not in use.



Figure 7: Using the included pool cover for protection.

TROUBLESHOOTING

Problem	Possible Cause	Solution
---------	----------------	----------

Problem	Possible Cause	Solution
Water is cloudy	Insufficient filtration; improper chemical balance; high debris load	Run filter pump longer; clean/replace filter cartridge; test and adjust water chemistry (chlorine, pH); vacuum pool.
Water is green/algae growth	Low chlorine; high pH; poor circulation	Shock treat the pool with chlorine; brush pool walls; run filter continuously; test and adjust water chemistry.
Pump not running	Power issue; clogged impeller; air in system	Check power connection/breaker; unplug and inspect impeller for debris; purge air from pump system (refer to pump manual).
Water leaking from pool	Puncture in liner; loose hose connection; faulty drain plug	Locate and patch puncture; tighten all hose clamps; ensure drain plug is securely closed.
Top ring deflating	Air leak in top ring	Locate the leak (e.g., using soapy water) and apply a repair patch.





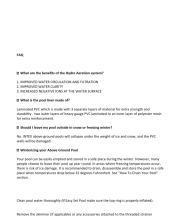
SPECIFICATIONS

- **Brand:** Intex
- **Model Number:** 26175EH
- **Shape:** Round
- **Product Dimensions:** 216"L x 216"W x 48"H (18ft Diameter x 48in Height)
- **Water Capacity:** 5455 Gallons
- **Material:** Plastic, Polyvinyl Chloride (PVC) - 3-Ply Puncture-Resistant
- **Item Weight:** 130.8 Pounds
- **Included Components:** Easy Set Pool, 1500 GPH Cartridge Filter Pump, Removable Ladder, Pool Cover, Ground Cloth
- **Special Feature:** Weather Resistant
- **Assembly Required:** Yes
- **UPC:** 078257261758

WARRANTY AND SUPPORT

For warranty information, technical support, or to order replacement parts, please refer to the contact information provided in your product packaging or visit the official Intex website. Keep your purchase receipt for warranty claims.

Related Documents - 26175EH

	<p>INTEX Easy Set Pool Owner's Manual: Setup, Safety, and Maintenance Guide</p> <p>Comprehensive owner's manual for INTEX Easy Set Pools (6' - 18' models). Includes essential safety rules, setup instructions, maintenance tips, troubleshooting, and warranty information for safe and enjoyable pool use.</p>
	<p>Intex Prism Frame Oval Pool 503x274x122 cm - Model 55213 Product Information & Safety</p> <p>Find essential product details and safety warnings for the Intex Prism Frame Oval Pool (Model 55213). Includes dimensions, capacity, included accessories, manufacturer contact, and important usage guidelines.</p>
	<p>Intex Frame Pool Set Family User Manual - Models 260x160x65cm and Others</p> <p>Comprehensive user manual for Intex Frame Pool Set Family models, including setup instructions, maintenance guidelines, troubleshooting tips, and warranty information for safe and enjoyable pool use.</p>
	<p>Intex Metal Frame Pool Owner's Manual</p> <p>Comprehensive owner's manual for Intex Metal Frame Pools (8'-24' models), covering safety rules, setup instructions, maintenance, troubleshooting, and warranty information.</p>
	<p>Intex Above-Ground Pool FAQ and Winterizing Guide</p> <p>Comprehensive FAQ for Intex above-ground pools, covering Hydro Aeration system benefits, liner materials, essential winterization steps, proper storage techniques, and GFCI safety information for optimal pool care.</p>



[Intex Krystal Clear Sand Filter Pump SF90110-1 Owner's Manual](#)

Comprehensive owner's manual for the Intex Krystal Clear Sand Filter Pump, Model SF90110-1. Includes setup instructions, operating procedures, maintenance tips, troubleshooting guide, and safety information for above-ground swimming pools.