

## Manuals+

[Q & A](#) | [Deep Search](#) | [Upload](#)

manuals.plus /

- › [Dornbracht](#) /
- › [Dornbracht Smart Water Set 35740970 Instruction Manual](#)

## Dornbracht 35740970

# Dornbracht Smart Water Set 35740970 Instruction Manual

Model: 35740970

## 1. INTRODUCTION

This manual provides detailed instructions for the installation, operation, and maintenance of your Dornbracht Smart Water Set, model 35740970. Please read this manual thoroughly before installation and use to ensure proper function and safety. Keep this manual for future reference.

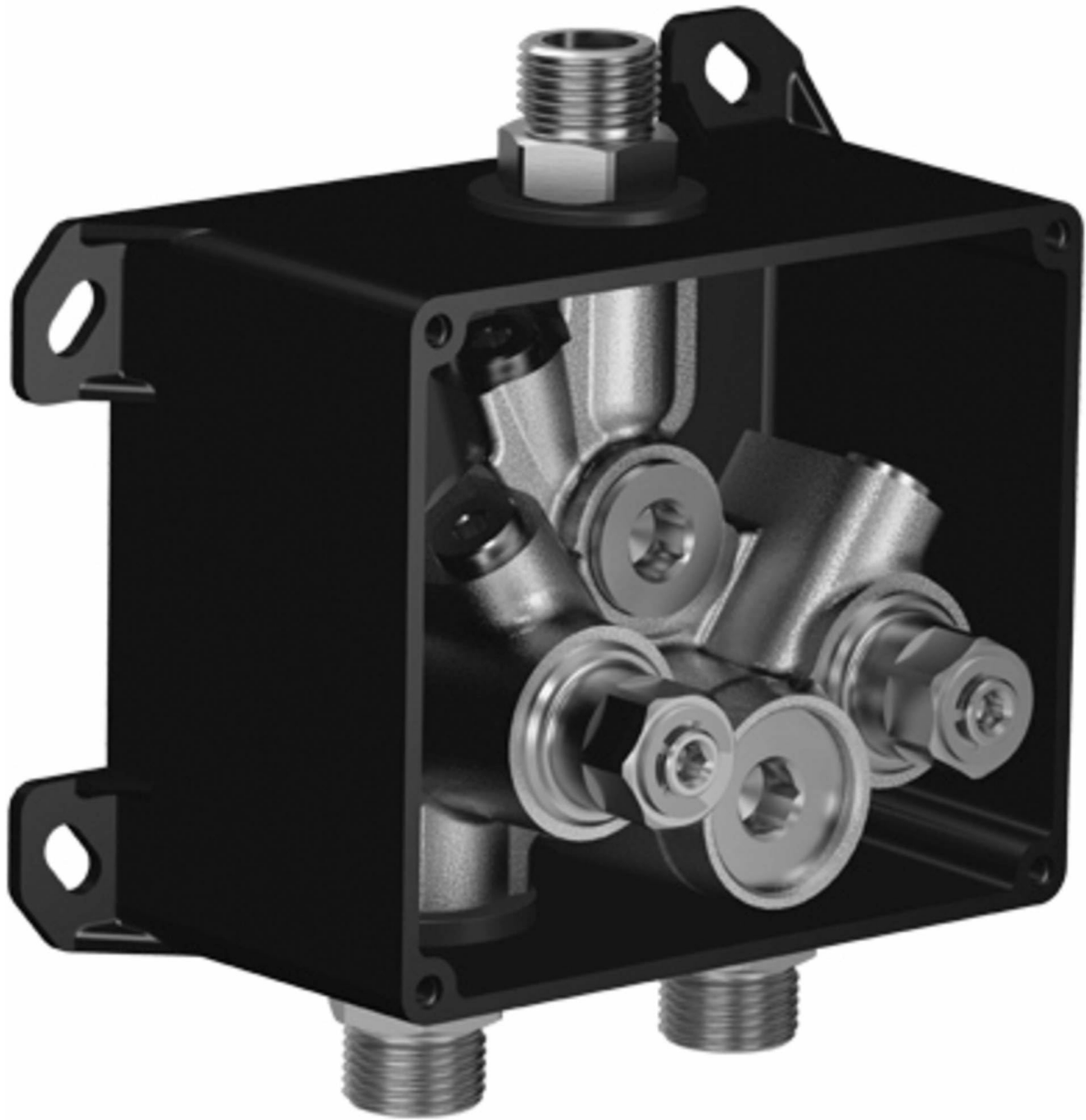


Figure 1: Dornbracht Smart Water Set 35740970. This image shows the complete water set, including the faucet and control unit components.

## 2. SAFETY INFORMATION

Observe the following safety precautions to prevent injury or damage to the product:

- **Professional Installation:** Installation should only be performed by a qualified professional in accordance with local plumbing and electrical codes.
- **Water Supply:** Ensure the main water supply is turned off before beginning any installation or maintenance.
- **Electrical Safety:** If the product includes electrical components, ensure power is disconnected before servicing. Do not expose electrical components to water.
- **Temperature Limits:** Do not exceed the recommended water temperature and pressure limits specified in the technical data.
- **Cleaning:** Use only mild cleaning agents. Abrasive cleaners can damage the surface finish.

## 3. PACKAGE CONTENTS

Verify that all components are present and undamaged before installation. If any parts are missing or damaged, contact your supplier immediately.

- Smart Water Faucet
- Control Unit
- Connection Hoses
- Mounting Hardware
- Instruction Manual (this document)

## 4. SETUP AND INSTALLATION

---

Follow these steps for proper installation. Refer to local plumbing and electrical codes.

### 4.1 Preparation

1. Turn off the main water supply.
2. Clear the installation area and ensure sufficient space for the faucet and control unit.
3. Gather necessary tools (e.g., adjustable wrench, screwdriver, sealant tape).

### 4.2 Faucet Installation

1. Insert the faucet body into the mounting hole on the sink or countertop.
2. Secure the faucet from underneath using the provided mounting hardware (washer, nut). Tighten firmly but do not overtighten.
3. Connect the hot and cold water supply lines to the corresponding inlets on the faucet. Use sealant tape on threaded connections.

### 4.3 Control Unit Installation

1. Mount the control unit in an accessible location, typically under the sink, ensuring it is protected from direct water exposure.
2. Connect the faucet's data cable to the control unit.
3. Connect the water outlet from the control unit to the faucet's mixed water inlet.
4. Connect the power supply to the control unit (if applicable) and then to a suitable electrical outlet.

### 4.4 Final Steps

1. Slowly turn on the main water supply and check for leaks.
2. Plug in the control unit to power.
3. Test the faucet's functionality.

## 5. OPERATING INSTRUCTIONS

---

The Dornbracht Smart Water Set offers intuitive control for various water functions.

### 5.1 Basic Operation

- **Turning On/Off:** Tap the control button once to turn the water on or off.

- **Adjusting Temperature:** Rotate the control knob to adjust the water temperature. Clockwise for warmer, counter-clockwise for cooler.
- **Adjusting Flow Rate:** Rotate the outer ring of the control knob to adjust the water flow rate.

## 5.2 Smart Functions (if applicable)

Your Smart Water Set may include advanced features. Refer to the separate smart features guide or the Dornbracht website for detailed instructions on programming and using these functions (e.g., pre-set temperatures, timed dispensing).

## 6. MAINTENANCE

Regular maintenance ensures the longevity and optimal performance of your Dornbracht Smart Water Set.

### 6.1 Cleaning

- Clean the surfaces with a soft cloth and a mild, non-abrasive cleaning agent.
- Do not use abrasive sponges, scouring agents, or cleaners containing alcohol, ammonia, or phosphoric acid, as these can damage the finish.
- Rinse thoroughly with clean water after cleaning and dry with a soft cloth.

### 6.2 Aerator Maintenance

Periodically unscrew and clean the aerator to remove mineral deposits and ensure consistent water flow. Soak in a vinegar solution if necessary, then rinse and reattach.

## 7. TROUBLESHOOTING

If you encounter issues, consult the following table before contacting customer service.

Problem	Possible Cause	Solution
No water flow or low flow	Water supply turned off Clogged aerator Kinked supply hose	Check main water supply valve. Clean or replace aerator. Inspect and straighten hoses.
Water leaks from connections	Loose connections Damaged O-rings/washers	Tighten connections carefully. Replace O-rings or washers.
Incorrect water temperature	Incorrect temperature setting Issue with water heater	Adjust temperature control. Check water heater settings and function.

## 8. SPECIFICATIONS

Technical data for the Dornbracht Smart Water Set 35740970.

Feature	Detail
Brand	Dornbracht

Feature	Detail
Model Number	3574097090
Item Weight	1.76 kg (3.88 lbs)
ASIN	B073DHM2KG
First Available Date	June 20, 2024
Material	<i>(Information not provided, typical for high-end faucets: Brass, Chrome finish)</i>
Water Pressure	<i>(Information not provided, typically 0.5 - 10 bar)</i>
Water Temperature	<i>(Information not provided, typically max 80°C)</i>

## 9. WARRANTY AND SUPPORT

---

Dornbracht products are manufactured to high-quality standards and come with a manufacturer's warranty. For specific warranty terms and conditions, please refer to the warranty card included with your product or visit the official Dornbracht website.

For technical support, spare parts, or service inquiries, please contact your local Dornbracht dealer or customer service department. Ensure you have your model number (35740970) and proof of purchase available when contacting support.

**Dornbracht Official Website:** [www.dornbracht.com](http://www.dornbracht.com)

---