

## Sena 20S-EVO-01

# Sena 20S EVO Motorcycle Bluetooth Communication System User Manual

Model: 20S-EVO-01

Brand: Sena

## 1. INTRODUCTION

The Sena 20S EVO is a state-of-the-art Bluetooth communication system designed for motorcycle riders. It offers enhanced intercom stability and extended communication range, ensuring robust performance for various riding scenarios. This system integrates seamlessly with your helmet, providing hands-free communication, music playback, FM radio, and voice command capabilities.



Figure 1.1: Sena 20S EVO Main Module

## 2. PACKAGE CONTENTS

Your Sena 20S EVO package typically includes the following components:

- Sena 20S EVO Main Module
- Universal Helmet Clamp Kit (with boom microphone and wired microphone options)
- Speakers (40mm driver unit)
- Speaker Foam Spacers
- Speaker Covers
- Adhesive Rubber Spacers
- Adhesive Mount
- Velcro Pads for Speakers and Microphone
- Hex Wrench
- USB Charging & Data Cable

### 3. SETUP AND INSTALLATION

---

Proper installation is crucial for optimal performance and comfort. Follow these steps to install your Sena 20S EVO on your motorcycle helmet.

#### 3.1. Choosing and Attaching the Microphone

1. Decide which microphone type (boom or wired) is best suited for your helmet type (e.g., boom for open-face, wired for full-face).
2. To change microphones, use the provided hex wrench to unscrew the back plate of the clamp.
3. Slide the back plate over and unlock the current microphone.
4. Insert the desired new microphone and roll the latch over to lock it into the clamp.

#### 3.2. Mounting the Clamp to the Helmet

1. Remove your helmet's cheek pads and pull up the center liner to access the inner shell.
2. Loosen the clamp on the Sena unit.
3. Slide the clamp onto the left side of the helmet, positioning it between the foam and the outer shell.
4. If there is any gap between the helmet and the clamp, use the provided adhesive rubber spacers to shim it for a secure fit.
5. For odd-shaped helmets or those with a different sized edge, replace the clamp's back with the adhesive mount and attach it directly to the helmet's exterior.

#### 3.3. Speaker Installation

1. Grab the Velcro adhesive pads and place them inside the helmet where the speakers will be positioned, directly over your ears.
2. Sena provides foam spacers that can be added to the speakers to push them closer to your ears, eliminating wind noise and improving sound quality. Attach these to the back of the speakers if needed.
3. Speaker covers can also be added to reduce friction between the speaker and your ear.
4. Route the speaker wires: the longer speaker wire typically goes to the right side of the helmet, looping it through the center liner. The shorter wire connects to the left speaker.
5. Place the speakers firmly onto the Velcro pads in the helmet.
6. **Tip:** After installing, play some music through the Sena unit to ensure the speakers are directly over your ears for the best sound experience. Adjust their position if necessary.

#### 3.4. Microphone Positioning and Wire Management

1. If needed, use the provided Velcro areas to attach the microphone securely within the helmet.

2. Ensure the microphone is positioned directly in front of your face, with the windscreen on, and the correct side of the microphone facing your mouth for clear audio.
3. Carefully push all wires into the helmet's crevices, ensuring nothing will rub on your head or face during rides.

### 3.5. Final Assembly

1. Reattach the helmet's center liner and cheek pads. This step is easiest to perform while the clamp is not fully tightened.
2. Snap the cheek pads securely into place.
3. Tighten the clamp in its desired position using the hex wrench.
4. Finally, slide the main Sena 20S EVO module onto the mounted clamp until it clicks into place.
5. To release the module, press the quick-release button located on the clamp.



Figure 3.1: Sena 20S EVO Mounted on Helmet

Video 3.1: Sena 20S EVO Installation Guide. This video demonstrates the step-by-step process of installing the Sena 20S EVO communication system onto a motorcycle helmet, including microphone selection, clamp mounting, speaker placement, and wire management.

## 4. OPERATING INSTRUCTIONS

The Sena 20S EVO offers intuitive controls for various functions. Familiarize yourself with the main jog dial and buttons for seamless operation.

### 4.1. Basic Functions

- **Power On/Off:** Refer to the quick start guide for specific button combinations.
- **Volume Control:** Rotate the jog dial.
- **Bluetooth Pairing:** Follow the pairing instructions in the quick start guide to connect with your smartphone or other Bluetooth devices.

## 4.2. Communication

- **Intercom:** The 20S EVO features improved intercom stability and distance. Initiate intercom conversations with other Sena users by following the pairing and connection procedures.
- **Phone Calls:** Connect to your smartphone via Bluetooth to make and receive calls hands-free.

## 4.3. Audio Features

- **Music Playback:** Stream music from your connected smartphone. Controls for play, pause, skip tracks are available via the jog dial or voice commands.
- **FM Radio:** Tune into FM radio stations directly from the unit.

## 4.4. Advanced Features

- **Smartphone App:** Utilize the Sena smartphone app for configuration, firmware updates, and additional control over your device.
- **Voice Commands:** Control various functions using intuitive voice commands, allowing for a truly hands-free experience while riding.

# 5. MAINTENANCE

---

To ensure the longevity and optimal performance of your Sena 20S EVO, follow these maintenance guidelines:

- **Cleaning:** Regularly wipe the main module and clamp with a soft, damp cloth. Avoid using harsh chemicals or abrasive cleaners.
- **Charging:** Charge the unit using the provided USB cable. Ensure the charging port is clean and dry before connecting.
- **Storage:** When not in use for extended periods, store the unit in a cool, dry place. Charge the battery periodically to maintain its health.
- **Firmware Updates:** Periodically check for and install firmware updates via the Sena Device Manager software or smartphone app. Updates often include performance improvements and bug fixes.

# 6. TROUBLESHOOTING

---

If you encounter issues with your Sena 20S EVO, try the following common troubleshooting steps:

- **No Power:** Ensure the battery is charged. Connect to a power source and check the charging indicator.
- **No Sound from Speakers:** Check speaker connections. Ensure speakers are correctly positioned over your ears. Verify volume levels.
- **Intercom Issues:** Ensure both units are within range and properly paired. Check for interference from other electronic devices.
- **Bluetooth Disconnection:** Try re-pairing the device with your smartphone. Ensure no other devices are causing interference.
- **Reset:** If the unit is unresponsive, perform a factory reset (refer to the quick start guide for specific instructions).

# 7. SPECIFICATIONS

---

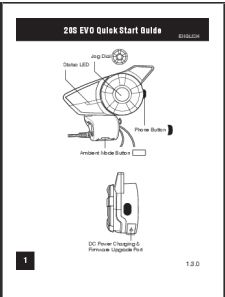
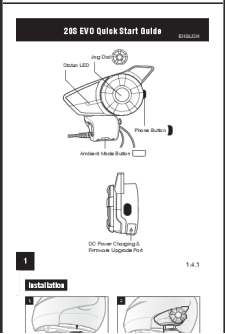
Feature	Specification
Model Name	20S EVO
Connectivity Technology	Bluetooth 4.1
Talk Time	13 hours
Operating Temperature	-10°C to 55°C (14°F to 131°F)
Main Module Dimensions (L x W x H)	98 mm x 56.2 mm x 31.5 mm (3.9" x 2.1" x 1.2")
Speaker Driver Unit	40 mm (thickness 6.5 mm)
Boom Microphone Length	190 mm
Wire Between Speakers Length	555 mm
Module Weight	61 grams (2.11 ounces)
Frequency Range	20 Hz to 20,000 Hz
Compatible Devices	Motorcycles
Control Method	Touch
Noise Control	Active Noise Cancellation

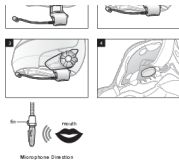
## 8. WARRANTY AND SUPPORT

Specific warranty details for the Sena 20S EVO are not provided in this manual. For comprehensive warranty information, product support, or service inquiries, please refer to the official Sena website or contact Sena customer service directly.

© 2024 Sena. All rights reserved. Information subject to change without notice.

### Related Documents - 20S-EVO-01

	<p><a href="#">Sena 20S EVO Quick Start Guide</a></p> <p>A quick start guide for the Sena 20S EVO Bluetooth headset, covering installation, device operation, Bluetooth pairing, intercom functions, and voice commands.</p>
	



**2**

**Sena Motorcycle App**

- Download
- Android: Google Play Store
- iOS: App Store
- Sena Technology

**Sena Device Manager**

The Sena Device Manager (SDM) app is designed to help you manage the Sena system and its components. It is available for Android (Google Play Store) and iOS (App Store). Download the Sena Device Manager from the App Store or Google Play.

**Basic Operations**

- Tap: Tapping
- Tap: Double Tapping
- Tap: Press for 1 sec
- Tap: Press and hold

**3**

**Power On/Off**

Tap: Power On/Off

**Volume Adjustment**

Tap: Volume Up

Tap: Volume Down

**Ambient Mode**

Tap: Ambient Mode

**Bluetooth Pairing**

Tap: Bluetooth Pairing

Tap: Phone, MP3 and GPS

**4**

**Mobile Phone**

- Tap: Answer
- Tap: Phone Button
- Tap: End
- Tap: Phone Button
- Tap: Voice Call
- Tap: Phone Button
- Tap: Repeat Call
- Tap: Phone Button
- Tap: Repeat
- Tap: Phone Button
- Tap: Call Transfer
- Tap: Phone Button

**5**

**Music**

- Tap: Play/Pause
- Tap: Stop
- Tap: Previous
- Tap: Next

**Battery Check**

Tap: Battery Check

Tap: Battery Level

**Configuration Menu**

Tap: Configuration Menu

Tap: Settings

**6**

**Normal Pairing**

Tap: Normal Pairing

Tap: Intercom

Tap: Pairing

**7**

**Start / End Intercom**

Tap: Start Intercom

Tap: End Intercom

Tap: Start / End Intercom

**Start / End Group Intercom**

Tap: Start / End Group Intercom

**8**

**Voice Command**

Tap: Voice Command

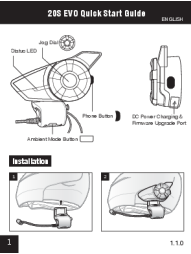


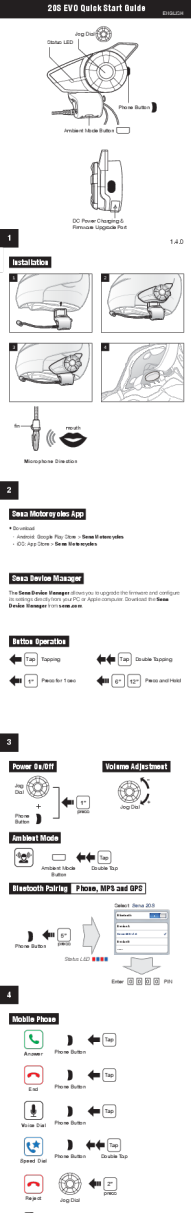
Tap: Voice Command

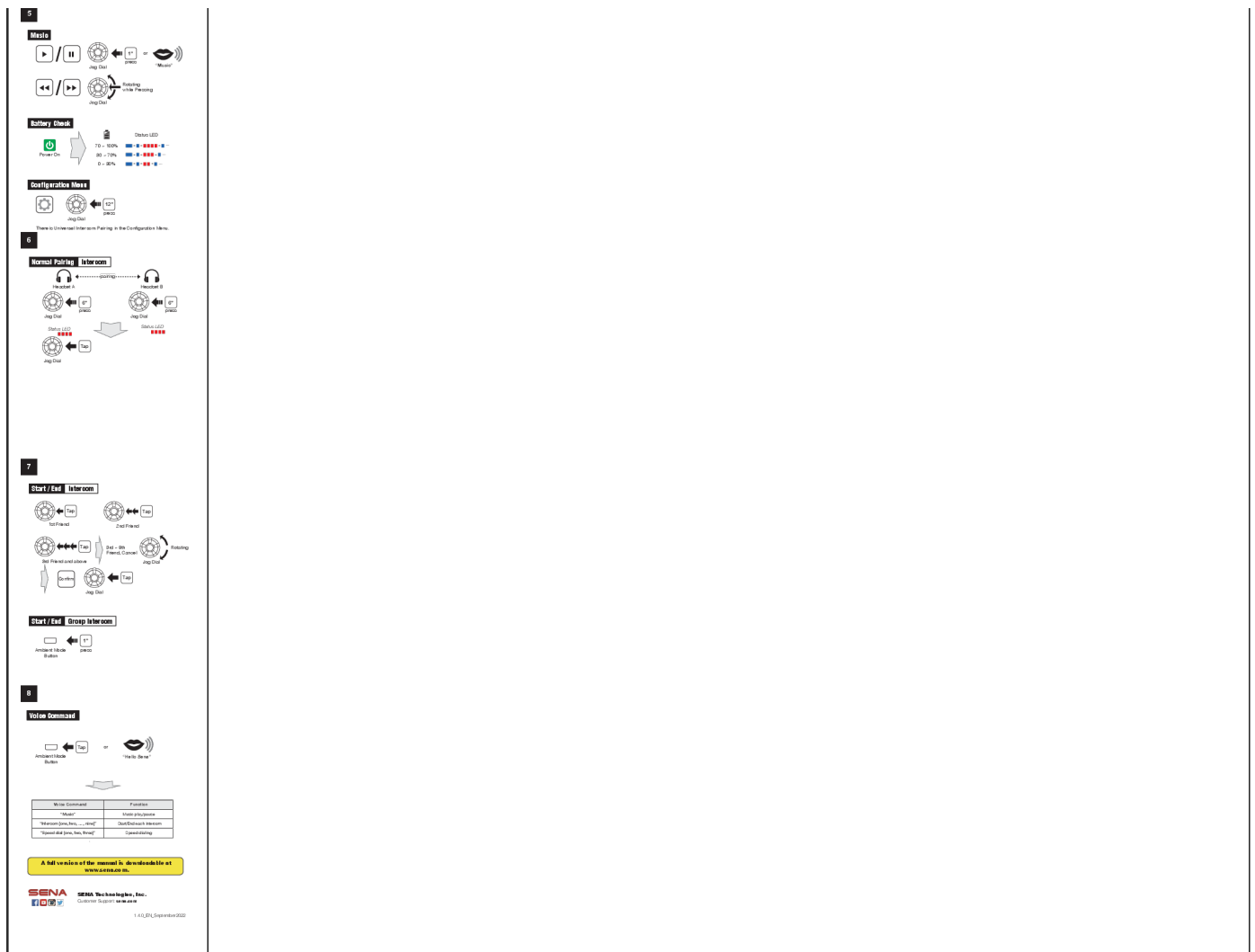
Voice Command	Function
"Hello"	Start Intercom
"Intercom (Name, Name, ...)"	Start/End Intercom
"Repeat and Stop (Name, Name)"	Repeat/Stop

A full version of the manual is downloadable at [www.sena.com](http://www.sena.com)

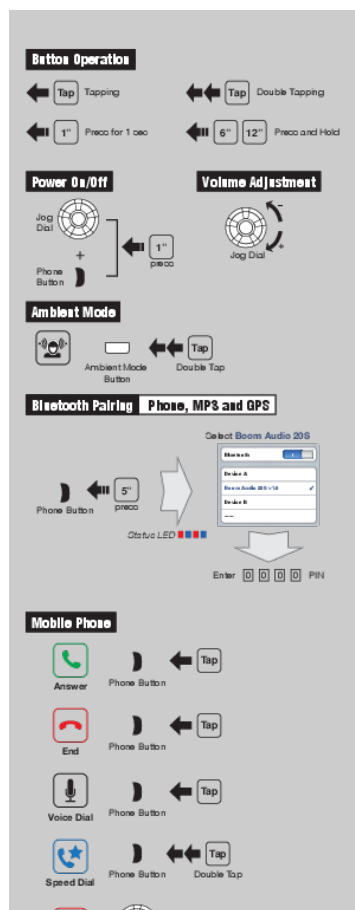
## [Sena 20S EVO Quick Start Guide](#)

A concise guide to installing and operating the Sena 20S EVO motorcycle communication system, covering Bluetooth pairing, intercom functions, music control, and voice commands.

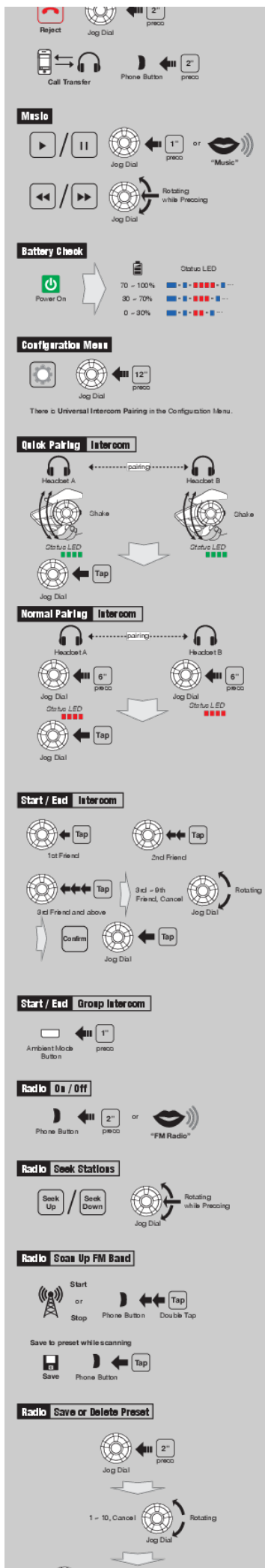
	<p><a href="#">Sena 20S EVO Quick Start Guide</a></p> <p>A quick start guide for the Sena 20S EVO Bluetooth motorcycle communication system, detailing installation, button operations, power management, Bluetooth pairing, music control, radio functions, and voice commands.</p>
	<p><a href="#">Sena 20S Motorcycle Bluetooth Communication System User's Guide</a></p> <p>User's guide for the Sena 20S Motorcycle Bluetooth Communication System, detailing its features like hands-free calling, stereo music, intercom, and installation for motorcycle riders. Learn how to use your Sena 20S effectively.</p>
	<p><a href="#">Sena +Mesh Bluetooth to Mesh Intercom Adapter Quick Start Guide</a></p> <p>Quick start guide for the Sena +Mesh Bluetooth to Mesh Intercom Adapter, covering setup, basic operation, Mesh Intercom features, troubleshooting, and product details.</p>
	<p><a href="#">Sena 20S EVO Quick Start Guide</a></p> <p>A concise guide to installing and operating the Sena 20S EVO Bluetooth communication system, covering basic functions, pairing, and settings.</p>



Documents - Sena – 20S-EVO-01







[\[pdf\]](#) Guide

QuickGuide H D 20S EVO 01 firmware sena senablueetoothmanager |||

Button Operation Tap Tapping 1 Press for 1 sec Tap Double Tapping 6 12 Press and Hold Power On/Off Jog Dial Phone Button Ambient Mode Volume Adjustment - 1 press Jog Dial Ambient Mode Button Tap Double Tap Bluetooth Pairing Phone, MP3 and GPS Phone Button 5 press Status LED Selec...

lang:en score:20 filesize: 321.84 K page\_count: 1 document date: 2017-03-31

Save

Jog Dial

Tap

or

Delete

Phone Button

Tap

Radio

Move to Preset Station

Tap

| 1 | → | 2 | → → | 5 | → → | 6 | → | 10 |

Phone Button

Voice Command

Tap

or

Ambient Mode Button

or

"Hello Sena"

Voice Command	Function
"Music"	Music play/pause
"FM radio"	FM Radio on/off
"Intercom [one, two, ... nine]"	Start/End each Intercom
"Speed dial [one, two, three]"	Speed dialing

A full version of the manual is downloadable at [senamotorcycle.com/harley-davidson](http://senamotorcycle.com/harley-davidson).

Boom! Audio 20S EVO Quick Reference

Type	Operation	Button/Command	Voice Command	LED
Basic Function	Power-on	Press the Phone Button and the Jog Dial for 1 second	-	Solid blue
	Power-off	Press the Phone Button and the Jog Dial	-	Solid red
	Volume adjustment	Rotate the Jog Dial	-	-
	Voice command	Double tap the surface of the main unit / Push the Ambient Mode Button	"Hello Sena"	Green flashing
	Ambient mode	Double tap the Ambient Mode Button	-	Green flashing
Mobile Phone	Phone pairing	Press the Phone Button for 4 seconds	-	Blue and alternating flashing
	Second next phone pairing	Press the Jog Dial for 6 seconds	-	Red flashing
	GPS pairing	Tap the Phone Button within 2 seconds	-	Red flashing
		Press the Jog Dial for 6 seconds	-	Red flashing
		Tap the Phone Button again within 2 seconds	-	Red flashing
	Answer & end phone call	Tap the Phone Button on the Jog Dial	-	-
	Repeat incoming call	Press the Jog Dial for 2 seconds	-	-
	Call transfer	Press the Phone Button for 2 seconds	-	-
	Voice dial	Tap the Phone Button	-	-
	Speed dial	Double tap the Phone Button	"Speed dial [one, two, three]"	-
Intercom	Intercom pairing	Press the Jog Dial for 6 seconds	"Pairing intercom"	Red flashing
	Universal Intercom pairing	Tap the Jog Dial 4 times in the Configuration Menu	-	-
	Start / End each Intercom	Tap the Jog Dial	"Intercom [one, two, ... nine]"	-
	End all Intercoms	Press the Jog Dial for 2 seconds	"End intercom"	Blue flashing
	Start & End Group Intercom	Press the Ambient Mode Button for 6 seconds	"Group intercom"	Green flashing
Music	Play / Pause / Stop music	Press the Jog Dial for 1 second	"Music / Pause"	-
	Track forward / back	Rotate the Jog Dial with pressing	"Next / Previous"	-
	FM station	Press the Phone Button for 2 seconds	"FM radio"	-
FM Radio	FM on/off	Press the Phone Button for 2 seconds	"FM radio / Stop"	-
	Select preset	Tap the Phone Button	"Next / Previous"	-
	Select station	Rotate the Jog Dial with pressing	-	-
Settings	Enter the Configuration Menu	Press the Jog Dial for 12 seconds	"Config gateway"	Solid red
Reset	Factory reset	Press the Phone Button for 12 seconds	-	Solid red
	Back reset	Tap the Jog Dial within 5 seconds	-	-

www.harley-davidson.com

Model	Part Number	Description	Price
10S	10S-001	10S Motorcycle Bluetooth Communication System	199.99
20S EVO	20S-001	20S EVO Motorcycle Bluetooth Communication System	249.99
30K	30K-001	30K Motorcycle Bluetooth Communication System	299.99
50S	50S-001	50S Motorcycle Bluetooth Communication System	349.99
SPIDER	SPIDER-001	SPIDER Motorcycle Bluetooth Communication System	399.99
SR10	SR10-001	SR10 Motorcycle Bluetooth Communication System	449.99
Accessories	ACC-001	Intercom Headset	49.99
Accessories	ACC-002	Intercom Headset	49.99
Accessories	ACC-003	Intercom Headset	49.99
Accessories	ACC-004	Intercom Headset	49.99
Accessories	ACC-005	Intercom Headset	49.99
Accessories	ACC-006	Intercom Headset	49.99
Accessories	ACC-007	Intercom Headset	49.99
Accessories	ACC-008	Intercom Headset	49.99
Accessories	ACC-009	Intercom Headset	49.99
Accessories	ACC-010	Intercom Headset	49.99
Accessories	ACC-011	Intercom Headset	49.99
Accessories	ACC-012	Intercom Headset	49.99
Accessories	ACC-013	Intercom Headset	49.99
Accessories	ACC-014	Intercom Headset	49.99
Accessories	ACC-015	Intercom Headset	49.99
Accessories	ACC-016	Intercom Headset	49.99
Accessories	ACC-017	Intercom Headset	49.99
Accessories	ACC-018	Intercom Headset	49.99
Accessories	ACC-019	Intercom Headset	49.99
Accessories	ACC-020	Intercom Headset	49.99
Accessories	ACC-021	Intercom Headset	49.99
Accessories	ACC-022	Intercom Headset	49.99
Accessories	ACC-023	Intercom Headset	49.99
Accessories	ACC-024	Intercom Headset	49.99
Accessories	ACC-025	Intercom Headset	49.99
Accessories	ACC-026	Intercom Headset	49.99
Accessories	ACC-027	Intercom Headset	49.99
Accessories	ACC-028	Intercom Headset	49.99
Accessories	ACC-029	Intercom Headset	49.99
Accessories	ACC-030	Intercom Headset	49.99
Accessories	ACC-031	Intercom Headset	49.99
Accessories	ACC-032	Intercom Headset	49.99
Accessories	ACC-033	Intercom Headset	49.99
Accessories	ACC-034	Intercom Headset	49.99
Accessories	ACC-035	Intercom Headset	49.99
Accessories	ACC-036	Intercom Headset	49.99
Accessories	ACC-037	Intercom Headset	49.99
Accessories	ACC-038	Intercom Headset	49.99
Accessories	ACC-039	Intercom Headset	49.99
Accessories	ACC-040	Intercom Headset	49.99
Accessories	ACC-041	Intercom Headset	49.99
Accessories	ACC-042	Intercom Headset	49.99
Accessories	ACC-043	Intercom Headset	49.99
Accessories	ACC-044	Intercom Headset	49.99
Accessories	ACC-045	Intercom Headset	49.99
Accessories	ACC-046	Intercom Headset	49.99
Accessories	ACC-047	Intercom Headset	49.99
Accessories	ACC-048	Intercom Headset	49.99
Accessories	ACC-049	Intercom Headset	49.99
Accessories	ACC-050	Intercom Headset	49.99
Accessories	ACC-051	Intercom Headset	49.99
Accessories	ACC-052	Intercom Headset	49.99
Accessories	ACC-053	Intercom Headset	49.99
Accessories	ACC-054	Intercom Headset	49.99
Accessories	ACC-055	Intercom Headset	49.99
Accessories	ACC-056	Intercom Headset	49.99
Accessories	ACC-057	Intercom Headset	49.99
Accessories	ACC-058	Intercom Headset	49.99
Accessories	ACC-059	Intercom Headset	49.99
Accessories	ACC-060	Intercom Headset	49.99
Accessories	ACC-061	Intercom Headset	49.99
Accessories	ACC-062	Intercom Headset	49.99
Accessories	ACC-063	Intercom Headset	49.99
Accessories	ACC-064	Intercom Headset	49.99
Accessories	ACC-065	Intercom Headset	49.99
Accessories	ACC-066	Intercom Headset	49.99
Accessories	ACC-067	Intercom Headset	49.99
Accessories	ACC-068	Intercom Headset	49.99
Accessories	ACC-069	Intercom Headset	49.99
Accessories	ACC-070	Intercom Headset	49.99
Accessories	ACC-071	Intercom Headset	49.99
Accessories	ACC-072	Intercom Headset	49.99
Accessories	ACC-073	Intercom Headset	49.99
Accessories	ACC-074	Intercom Headset	49.99
Accessories	ACC-075	Intercom Headset	49.99
Accessories	ACC-076	Intercom Headset	49.99
Accessories	ACC-077	Intercom Headset	49.99
Accessories	ACC-078	Intercom Headset	49.99
Accessories	ACC-079	Intercom Headset	49.99
Accessories	ACC-080	Intercom Headset	49.99
Accessories	ACC-081	Intercom Headset	49.99
Accessories	ACC-082	Intercom Headset	49.99
Accessories	ACC-083	Intercom Headset	49.99
Accessories	ACC-084	Intercom Headset	49.99
Accessories	ACC-085	Intercom Headset	49.99
Accessories	ACC-086	Intercom Headset	49.99
Accessories	ACC-087	Intercom Headset	49.99
Accessories	ACC-088	Intercom Headset	49.99
Accessories	ACC-089	Intercom Headset	49.99
Accessories	ACC-090	Intercom Headset	49.99
Accessories	ACC-091	Intercom Headset	49.99
Accessories	ACC-092	Intercom Headset	49.99
Accessories	ACC-093	Intercom Headset	49.99
Accessories	ACC-094	Intercom Headset	49.99
Accessories	ACC-095	Intercom Headset	49.99
Accessories	ACC-096	Intercom Headset	49.99
Accessories	ACC-097	Intercom Headset	49.99
Accessories	ACC-098	Intercom Headset	49.99
Accessories	ACC-099	Intercom Headset	49.99
Accessories	ACC-100	Intercom Headset	49.99

lang:en

score:18

filesize: 100.43 K

page\_count: 4

document date: 2022-06-03

[Sena Motorcycle Bluetooth Communication Systems and Accessories Catalog](#)

Comprehensive catalog of Sena motorcycle Bluetooth communication systems, intercoms, headsets, and accessories. Find detailed product information, part numbers, and pricing for models like 10S, 20S EVO, 30K, 50S, SPIDER, SR10, and more.

lang:en score:18 filesize: 100.43 K page\_count: 4 document date: 2022-06-03

MAP Pricing 11/1/2019	
Part Number	Description
<b>30K</b>	
30K-10	30K Motorcycle Bluetooth communication system with Mesh Intercom Dual Pack
30K-01	30K Motorcycle Bluetooth communication system with Mesh Intercom Dual Pack
30K-01D	30K Motorcycle Bluetooth communication system with Mesh Intercom Dual Pack
<b>20S-EVO</b>	
20S-EVO-02	20S-EVO Motorcycle Bluetooth communication system with Slim Speakers Sena 2...
20S-EVO-01	20S-EVO Motorcycle Bluetooth communication system with Slim Speakers Sena 2...
20S-EVO-01D	20S-EVO Motorcycle Bluetooth communication system with Slim Speakers Sena 2...
<b>(+)Mesh</b>	
10S	10S Motorcycle Bluetooth communication system with Slim Speakers Sena 2...
10C	10C Motorcycle Bluetooth communication system with Slim Speakers Sena 2...
10U	10U Motorcycle Bluetooth communication system with Slim Speakers Sena 2...
10R	10R Motorcycle Bluetooth communication system with Slim Speakers Sena 2...
<b>SF</b>	
SPH10	SPH10 Motorcycle Bluetooth communication system with Slim Speakers Sena 2...

[\[pdf\]](#) Price List

MAP Price List 2019 Luis map price list 32922ae2 3d3a 47b3 ae17 c2f08a9200bd staging sena s3 amazonaws docs default source policies |||

MAP Pricing 11/1/2019 Part Number Description 30K Part Number 30K-10 30K-01 30K-01D 20S-EVO Des ... 30K Motorcycle Bluetooth communication system with Mesh Intercom Dual Pack Part Number 20S-EVO-02 **20S-EVO-01 20S-EVO-01D** 20S EVO, Motorcycle Bluetooth Communication System with Slim Speakers Sena 2... lang:en score:16 filesize: 51.84 K page\_count: 3 document date: 2019-11-06