

## Sena 20S-EVO-01D

# SENA 20S-EVO-01D Motorcycle Bluetooth Headset Communication System

## USER MANUAL



Image: Two Sena 20S-EVO-01D units, highlighting their compact and aerodynamic form factor, designed for helmet integration.

### 1. Product Overview

The Sena 20S-EVO-01D is a state-of-the-art Bluetooth communication system designed for motorcycle riders. It offers a robust and stable intercom connection, allowing riders to communicate with each other, listen to music, make phone calls, and receive GPS navigation instructions. This model features an updated fixed shark fin antenna for enhanced performance and reliability.

#### Key Features:

- Next-generation design with improved intercom functionality and stability.
- Sleek new fixed shark fin antenna design for enhanced intercom stability.
- Robust general performance updates for a superior riding experience.

## 2. Setup and Installation

Proper installation ensures optimal performance and comfort. Follow these steps to set up your Sena 20S-EVO-01D.

### 2.1. Package Contents

Before beginning, verify all components are present in your package:



Image: All components of the Sena 20S-EVO-01D system, including the main module, speakers, and various microphone options.

- Sena 20S-EVO-01D Main Module
- Speaker Set (40 mm driver unit)
- Boom Microphone
- Wired Microphone
- Mounting Clamp Kit
- USB Power & Data Cable
- Speaker Pads, Hook and Loop Fasteners, and other accessories

### 2.2. Charging the Device

Fully charge the device before first use. The LED indicator will turn red during charging and blue when fully charged.

1. Connect the USB Power & Data Cable to the charging port on the main module.
2. Plug the other end into a USB wall charger or computer USB port.
3. Charging typically takes approximately 2.5 hours for a full charge.

### 2.3. Mounting the Headset to Your Helmet

The 20S-EVO-01D can be mounted using either the clamp kit or the adhesive mount.



Image: The Sena 20S-EVO-01D communication system securely attached to the left side of a white motorcycle helmet, demonstrating its low-profile integration.

1. **Choose Mounting Location:** Select a flat surface on the left side of your helmet, near the bottom edge.
2. **Install Clamp Kit:** Loosen the screws on the clamp kit and slide it between the helmet shell and the inner padding. Tighten the screws securely.
3. **Install Speakers:** Place the speakers inside the helmet's ear pockets. Ensure they are centered with your ears for optimal audio. Use the provided hook and loop fasteners.
4. **Install Microphone:** For full-face helmets, use the wired microphone and attach it to the inside of the chin bar. For open-face or modular helmets, use the boom microphone and position it approximately 1-2 cm from your mouth.
5. **Connect Cables:** Plug the speaker and microphone cables into the corresponding ports on the main module.
6. **Attach Main Module:** Slide the main module onto the mounted clamp. Ensure it clicks securely into place.

### 3. Operating the Device

Familiarize yourself with the controls and functions of your Sena 20S-EVO-01D.

#### 3.1. Basic Controls

- **Power On/Off:** Press and hold the Phone Button and the Jog Dial for 1 second.
- **Volume Adjustment:** Rotate the Jog Dial clockwise to increase volume, counter-clockwise to decrease.
- **Voice Command:** Tap the Phone Button to activate voice commands.

#### 3.2. Bluetooth Pairing

Pair your 20S-EVO-01D with your mobile phone or other Bluetooth devices.

1. **Phone Pairing:** In power-off state, press and hold the Phone Button for 5 seconds until the LED flashes red and blue alternately. Select "Sena 20S EVO" from your phone's Bluetooth device list.
2. **Second Mobile Phone Pairing:** In power-off state, press and hold the Jog Dial for 5 seconds until the LED flashes red and blue alternately. Select "Sena 20S EVO" from your second phone's Bluetooth device list.

### 3.3. Intercom Communication

The 20S-EVO-01D supports up to 8-way intercom communication.

1. **Pairing with another 20S EVO:** Press and hold the Jog Dial on both units for 5 seconds until the LED flashes red. Tap the Jog Dial on either unit to complete pairing.
2. **Starting Intercom:** Tap the Jog Dial once to start intercom with the first paired friend. Tap twice for the second, and so on.
3. **Ending Intercom:** Tap the Jog Dial once to end intercom.

### 3.4. Music and Phone Calls

- **Play/Pause Music:** Press the Jog Dial for 1 second.
- **Next/Previous Track:** Rotate the Jog Dial while pressing it for 1 second.
- **Answer/End Call:** Tap the Phone Button.
- **Reject Call:** Press and hold the Phone Button for 2 seconds.

## 4. Maintenance

Regular maintenance ensures the longevity and optimal performance of your Sena 20S-EVO-01D.

### 4.1. Cleaning

- Wipe the main module with a soft, damp cloth. Avoid using harsh chemicals or abrasive cleaners.
- Ensure all ports are free of dust and debris.

### 4.2. Battery Care

- Avoid fully discharging the battery frequently.
- Store the device in a cool, dry place when not in use for extended periods.
- Charge the device at least once every 3-6 months to prevent deep discharge.

### 4.3. Firmware Updates

Sena regularly releases firmware updates to improve performance and add new features. Visit the Sena website to download the Sena Device Manager and update your device.

## 5. Troubleshooting

This section addresses common issues you might encounter with your 20S-EVO-01D.

Problem	Possible Cause	Solution
Device does not power on.	Low battery.	Charge the device fully.
Intercom disconnects frequently.	Out of range; Obstructions; Interference.	Stay within recommended range; Ensure clear line of sight; Move away from sources of strong electromagnetic interference.
No audio from speakers.	Speakers not connected properly; Volume too low.	Check speaker connections; Increase volume using the Jog Dial.

Problem	Possible Cause	Solution
Bluetooth pairing fails.	Device not in pairing mode; Incorrect pairing procedure.	Ensure device is in pairing mode (flashing red/blue); Refer to section 3.2 for correct procedure.
Microphone not working.	Microphone not connected; Incorrect microphone type for helmet.	Check microphone connection; Ensure correct microphone (boom/wired) is used for your helmet type.

## 6. Specifications

Detailed technical specifications for the Sena 20S-EVO-01D.

Feature	Specification
Model Name	20S-EVO-01D
Talk Time	13 hours
Operating Temperature	-10°C - 55°C (14°F - 131°F)
Main Module Dimensions	98 mm x 56.2 mm x 31.5 mm (3.9" x 2.1" x 1.2")
Speaker Driver Unit	40 mm - thickness 6.5 mm
Boom Microphone Length	190 mm
Weight (Module)	61 g
Wireless Technology	Bluetooth
Water Resistance Level	Water Resistant
Battery Type	Lithium Polymer (included)
Charging Time	Approx. 2.5 hours
Number of Items	2 (Dual Pack)

## 7. Warranty and Support

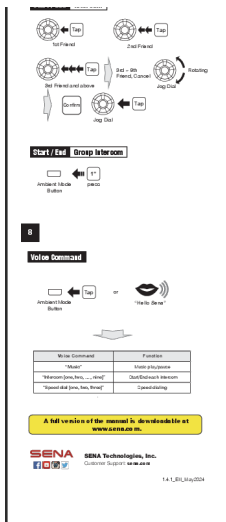
For warranty information, technical support, and frequently asked questions, please visit the official Sena website. You can also find updated manuals and firmware downloads there.

**Sena Technologies, Inc.**

152 Technology Dr.  
Irvine, CA 92618 USA

For the most current support resources, please visit: [www.sena.com](http://www.sena.com)

<div><div><div>20S EVO Quick Start Guide</div><div><div>1</div><div>1.0.0</div></div></div></div>	<div><div><div><a href="#">Sena 20S EVO Quick Start Guide</a></div><div><p>A quick start guide for the Sena 20S EVO Bluetooth headset, covering installation, device operation, Bluetooth pairing, intercom functions, and voice commands.</p></div></div></div>
<div><div><div><div>20S EVO Quick Start Guide</div><div><div>1</div><div>1.0.1</div></div></div><div><div>Installation</div><div><div>2</div><div><div>Sena Motorcycle App</div><div><div>Download</div><div>Available on the App Store</div><div>GET IT ON Google Play</div></div></div><div><div>Sena Device Manager</div><div>The Sena Device Manager is a free app that allows you to manage the Sena system and configure the settings. Download the Sena Device Manager from the App Store or Google Play.</div></div></div><div><div>Routine Operations</div><div><div>Tap</div><div>Tap</div><div>Tap</div><div>Tap</div><div>Tap</div><div>Tap</div></div></div><div><div>3</div><div><div>Power On/Off</div><div>Volume Adjustment</div></div><div><div>Ambient Mode</div><div>Bluetooth Pairing Phone, MP3 and GPS</div></div></div><div><div>4</div><div><div>Mobile Phone</div><div>Media</div><div>Battery Check</div><div>Configuration Menu</div></div></div><div><div>5</div><div><div>Normal Pairing</div><div>Intercom</div></div></div></div></div></div>	<div><div><div><a href="#">Sena 20S EVO Quick Start Guide</a></div><div><p>A concise guide to installing and operating the Sena 20S EVO motorcycle communication system, covering Bluetooth pairing, intercom functions, music control, and voice commands.</p></div></div></div>



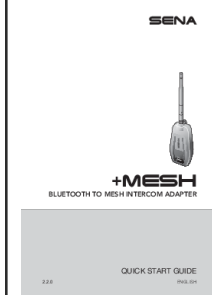
### [Sena 20S EVO Quick Start Guide](#)

A quick start guide for the Sena 20S EVO Bluetooth motorcycle communication system, detailing installation, button operations, power management, Bluetooth pairing, music control, radio functions, and voice commands.



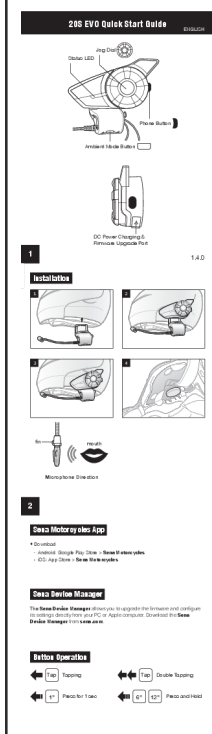
### [Sena 20S Motorcycle Bluetooth Communication System User's Guide](#)

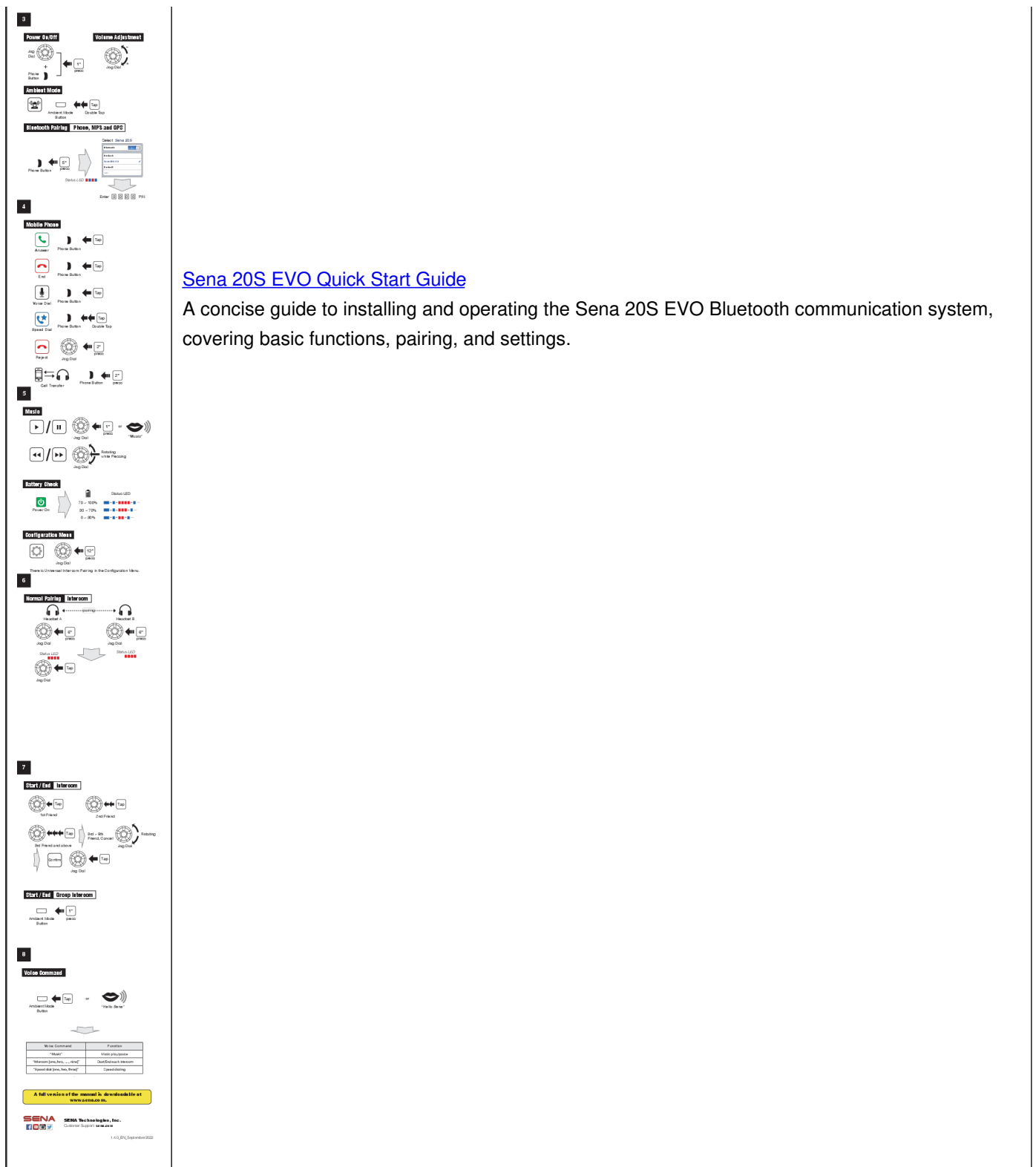
User's guide for the Sena 20S Motorcycle Bluetooth Communication System, detailing its features like hands-free calling, stereo music, intercom, and installation for motorcycle riders. Learn how to use your Sena 20S effectively.



### [Sena +Mesh Bluetooth to Mesh Intercom Adapter Quick Start Guide](#)

Quick start guide for the Sena +Mesh Bluetooth to Mesh Intercom Adapter, covering setup, basic operation, Mesh Intercom features, troubleshooting, and product details.

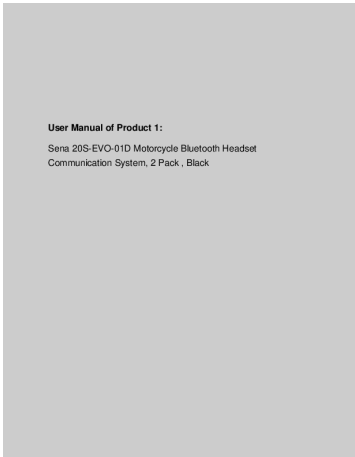




## [Sena 20S EVO Quick Start Guide](#)

A concise guide to installing and operating the Sena 20S EVO Bluetooth communication system, covering basic functions, pairing, and settings.



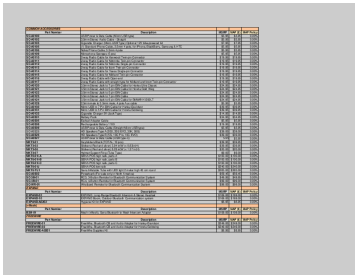


[\[pdf\]](#) User Manual Quick Start Guide Guide

User Manual Sena 20S EVO 01D Motorcycle Bluetooth Headset Communication System 2 Pack Black SC A0325 High Definition Speakers Improved Bass and Clarity Fits 30K Upgraded One Size Automotive B16a6nOTYDL m media amazon images I |||

User Manual of Product 1: Sena**20S-EVO-01D** Motorcycle Bluetooth Headset Communication System, 2 Pack , Black 20S EVO Motorcycle Bluetooth Communication System [www.sena.com](http://www.sena.com) User s Guide English 20S EVO WARNING To minimize the risk of serious injury, death or product damage, read this User s Gui...

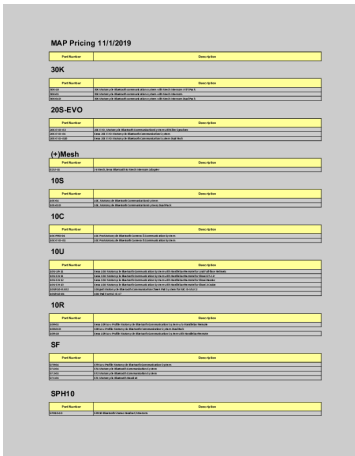
lang:en score:29 filesize: 2.47 M page\_count: 67 document date: 0000-00-00



[Sena Motorcycle Bluetooth Communication Systems and Accessories Catalog](#)

Comprehensive catalog of Sena motorcycle Bluetooth communication systems, intercoms, headsets, and accessories. Find detailed product information, part numbers, and pricing for models like 10S, 20S EVO, 30K, 50S, SPIDER, SR10, and more.

lang:en score:21 filesize: 100.43 K page\_count: 4 document date: 2022-06-03



[\[pdf\]](#) Price List

MAP Price List 2019 Luis map price list 32922ae2 3d3a 47b3 ae17 c2f08a9200bd staging sena s3 amazonaws docs default source policies |||

MAP Pricing 11/1/2019 Part Number Description 30K Part Number 30K-10 30K-01 30K-01D 20S-EVO Des ... ycle Bluetooth communication system with Mesh Intercom Dual Pack Part Number 20S-EVO-02 20S-EVO-01 **20S-EVO-01D** 20S EVO, Motorcycle Bluetooth Communication System with Slim Speakers Sena 20S EVO Moto...

lang:en score:20 filesize: 51.84 K page\_count: 3 document date: 2019-11-06