

ELECOM M-HT1DRBK

ELECOM HUGE Wireless Trackball Mouse M-HT1DRBK User Manual

Model: M-HT1DRBK

1. INTRODUCTION

This manual provides instructions for the proper setup, operation, and maintenance of your ELECOM HUGE Wireless Trackball Mouse (Model: M-HT1DRBK). Please read this manual thoroughly before using the product to ensure optimal performance and longevity.

2. WHAT'S IN THE BOX

- ELECOM HUGE Wireless Trackball Mouse
- USB Receiver
- AA Battery (x2)
- User Manual (this document)

3. SETUP

3.1. Battery Installation

1. Locate the battery compartment on the underside of the trackball mouse.
2. Open the battery compartment cover.
3. Insert the two AA batteries, ensuring correct polarity (+/-).
4. Close the battery compartment cover securely.

3.2. USB Receiver Connection

The USB receiver is stored within the trackball mouse for convenience during transport.

1. Remove the USB receiver from its storage slot on the underside of the trackball mouse.
2. Plug the USB receiver into an available USB port on your computer (PC or Mac).
3. Turn on the trackball mouse using the power switch located on the underside. The mouse should be automatically recognized by your operating system.

Wireless USB Connection

Enjoy a convenient and lag-free connection to PC and laptops.



Figure 1: Inserting the USB receiver into the storage slot on the underside of the trackball mouse.

3.3. Software Installation (Mouse Assistant)

For full customization of the 8 programmable buttons and advanced features, it is recommended to install the ELECOM Mouse Assistant software.

1. Visit the official ELECOM website.
2. Navigate to the 'Support' or 'Downloads' section and locate 'Mouse Assistant'.
3. Download the appropriate version for your operating system (Windows or macOS).
4. Follow the on-screen instructions to complete the installation.

Mouse Assistant Software

Enhanced software for programming buttons, utilizing presentation mode, creating gestures, and more.

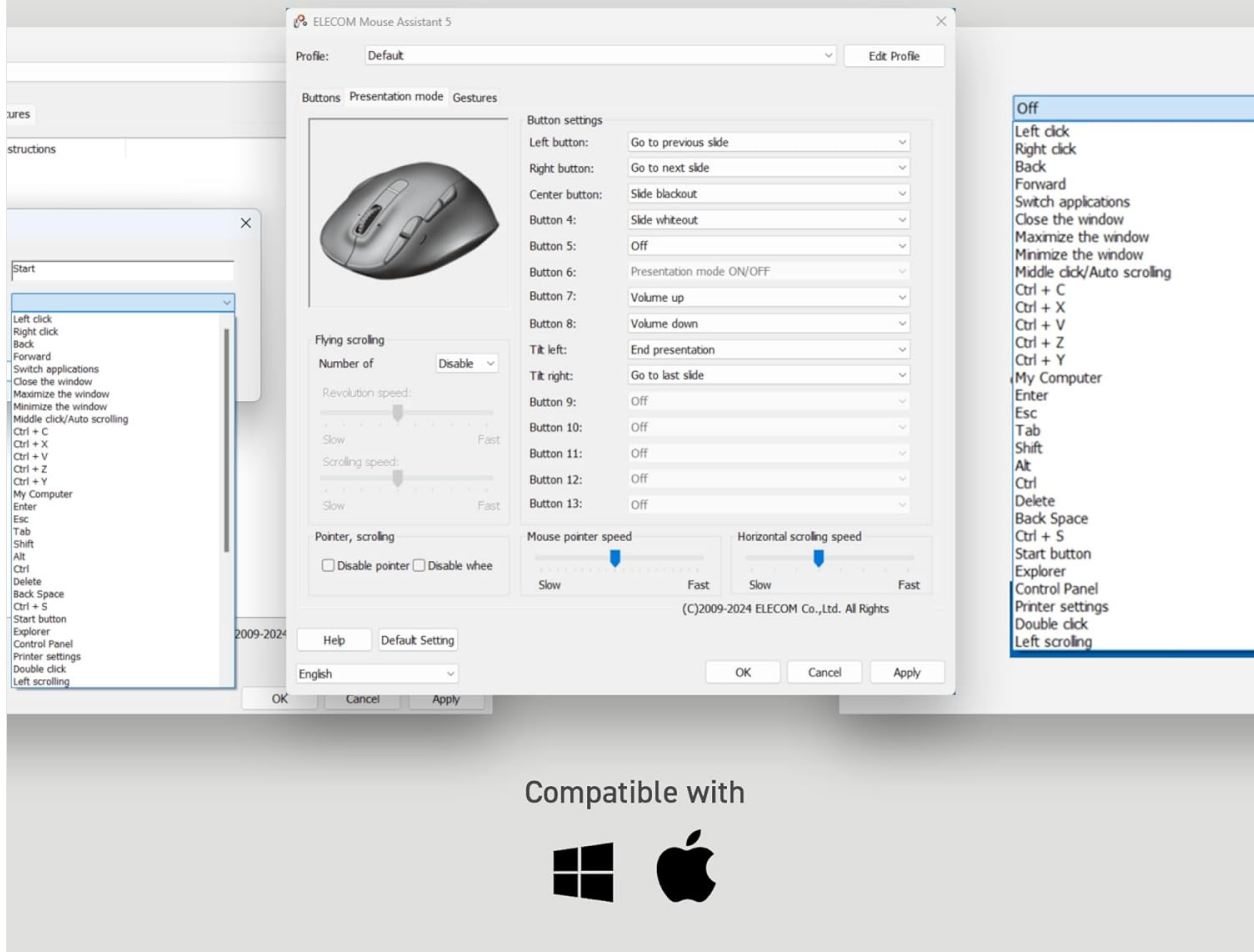


Figure 2: Example of the ELECOM Mouse Assistant software interface for button customization.

4. OPERATING INSTRUCTIONS

4.1. Basic Cursor Control

The ELECOM HUGE trackball is designed for index finger control, providing precise cursor movement. Use your index finger to roll the 52mm trackball to move the cursor on the screen.

Index Finger Control

Allows for detailed cursor control with the dexterity of index fingers.



Figure 3: Demonstrating index finger control for precise cursor movement.

4.2. DPI Adjustment

The trackball features a DPI button to adjust cursor speed. You can switch between three DPI settings: 500 (LOW), 1000 (MID), and 1500 (HIGH) DPI. Press the DPI button to cycle through these settings and find your preferred cursor speed.

4.3. Programmable Buttons

The trackball is equipped with 8 physical buttons, including the scroll wheel with tilt functionality. These buttons can be customized using the ELECOM Mouse Assistant software to perform various functions, such as application shortcuts, media controls, or custom macros.

8 Programmable Buttons

Use our Mouse Assistant software to program buttons and expand functionality.



Figure 4: Overview of the 8 programmable buttons and their locations.

4.4. Ergonomic Design and Palm Rest

The trackball features an ergonomic angled design and a large, soft palm rest to support your hand and wrist in a natural position, promoting comfort during extended use.

Soft Rubber Palm Support



Figure 5: The soft rubber palm support integrated into the trackball design.

5. MAINTENANCE

5.1. Trackball Cleaning

To maintain smooth operation, periodically clean the 52mm trackball and its ruby bearings. Dust and debris can accumulate and affect performance.

1. Turn off the trackball mouse.
2. Locate the ball removal hole on the underside of the device.
3. Gently push the trackball out through this hole.
4. Wipe the trackball with a soft, lint-free cloth.
5. Clean the three ruby ball bearings and the inside of the trackball housing with a cotton swab or a soft brush to remove any dust or debris.
6. Reinsert the trackball into the housing until it clicks into place.

Smooth Ruby Bearing

Bearings provide low-friction contact to enhance speed.

Oversized 52mm Ball

The giant ball is heavy and large to enhance tracking and ensure smoother navigation.



Figure 6: Illustration of the smooth ruby bearings and the trackball removal process.

6. TROUBLESHOOTING

6.1. Cursor Not Moving or Erratic

- **Check Batteries:** Ensure batteries are correctly installed and have sufficient charge. Replace if necessary. The trackball has a battery remaining light lamp.
- **Check USB Receiver:** Ensure the USB receiver is securely plugged into a working USB port. Try a different USB port.
- **Clean Trackball:** Refer to Section 5.1 for instructions on cleaning the trackball and bearings.
- **Interference:** Move the trackball closer to the USB receiver or away from other wireless devices that might cause interference.

6.2. Buttons Not Responding

- **Software Check:** If using custom button assignments, ensure the ELECOM Mouse Assistant software is running and configured correctly.
- **Re-pair Device:** In rare cases, re-pairing the device with the USB receiver might resolve the issue. Consult the ELECOM support website for specific instructions.

7. SPECIFICATIONS

Model Number	M-HT1DRBK
Connectivity	2.4GHz Wireless USB
DPI Settings	500 / 1000 / 1500 DPI (switchable)
Buttons	8 (Programmable) + Scroll Wheel with Tilt
Trackball Size	52mm
Power Source	2 x AA Batteries (included)
Operating System Compatibility	Windows 7, 8, 10 or later; macOS 10.13 or later
Dimensions (LxWxH)	7.16 x 4.52 x 2.25 inches (181.9 x 114.7 x 57.2 mm)
Weight (without battery)	9.2 oz (260 g)

8. WARRANTY AND SUPPORT

ELECOM products are designed for reliability and performance. For warranty information, technical support, or to download the latest software and drivers, please visit the official ELECOM website or contact ELECOM customer service.

Official ELECOM Website: <https://www.elecom.co.jp/global/>