

## LIFX L3A19MC08E26

# LIFX Mini 800-Lumen LED Light Bulb (L3A19MC08E26) Instruction Manual

Model: L3A19MC08E26 | Brand: LIFX

## PRODUCT OVERVIEW

The LIFX Mini is a versatile Wi-Fi enabled LED light bulb designed to enhance your living space with millions of colors and various white tones. This smart bulb operates without the need for a separate hub, connecting directly to your Wi-Fi network. It is compatible with leading voice assistants and smart home platforms, offering convenient control. The LIFX Mini is Energy Star compliant, ensuring energy efficiency. Key features include:

- Works with Alexa, Apple HomeKit, and Google Assistant for voice control.
- Easy setup: screw in, download the app, connect to Wi-Fi. No hub required.
- Built-in Wi-Fi and LIFX cloud for full lighting control via iOS, Android, and Windows 10 apps. Access your bulbs anywhere.
- Adjustable and dimmable: choose from 16 million colors and a full range of warm to cool white, with dimming from 1% to 100%.
- Intuitive control: manage lights individually or in groups, set timers, and create custom scenes.
- Bright and efficient: 800 lumens output, equivalent to a 60W incandescent bulb, using only 9W.

## SETUP INSTRUCTIONS

1. **Install the Bulb:** Carefully screw the LIFX Mini LED Light Bulb into a standard E26 light socket. Ensure the power is off before installation.
2. **Power On:** Turn on the power to the light socket. The bulb should illuminate.
3. **Download the LIFX App:** Download the official LIFX app from your device's app store (iOS, Android, or Windows 10).
4. **Connect to Wi-Fi:** Open the LIFX app and follow the on-screen instructions to connect your bulb to your home Wi-Fi network. The bulb requires a Wi-Fi router compliant with 802.11b,g,n standards. No separate hub is needed.
5. **Voice Assistant Integration (Optional):** If desired, link your LIFX account with Amazon Alexa, Apple HomeKit, or Google Assistant through their respective apps for voice control.



Image: A close-up view of the LIFX Mini 800-Lumen LED Light Bulb, showcasing its compact design and standard E26 base.

## OPERATING INSTRUCTIONS

Once set up, you can control your LIFX Mini bulb using the LIFX app or compatible smart home platforms.

- **App Control:** Use the LIFX app to turn the bulb on/off, adjust brightness (1% to 100%), change colors (16 million options), and select from a range of warm to cool white tones. You can also create custom scenes, set schedules, and group multiple bulbs for synchronized control.
- **Voice Control:** If integrated with Alexa, HomeKit, or Google Assistant, use voice commands to control your lights. For example, "Alexa, turn on the living room light" or "Hey Google, set bedroom light to blue."
- **Remote Access:** With the LIFX cloud integration, you can control your lights from anywhere with an internet connection using the LIFX app.

**Important Note: LIFX bulbs are not compatible with traditional household dimmer switches. All dimming and color adjustments are performed via the app or smart home platforms.**

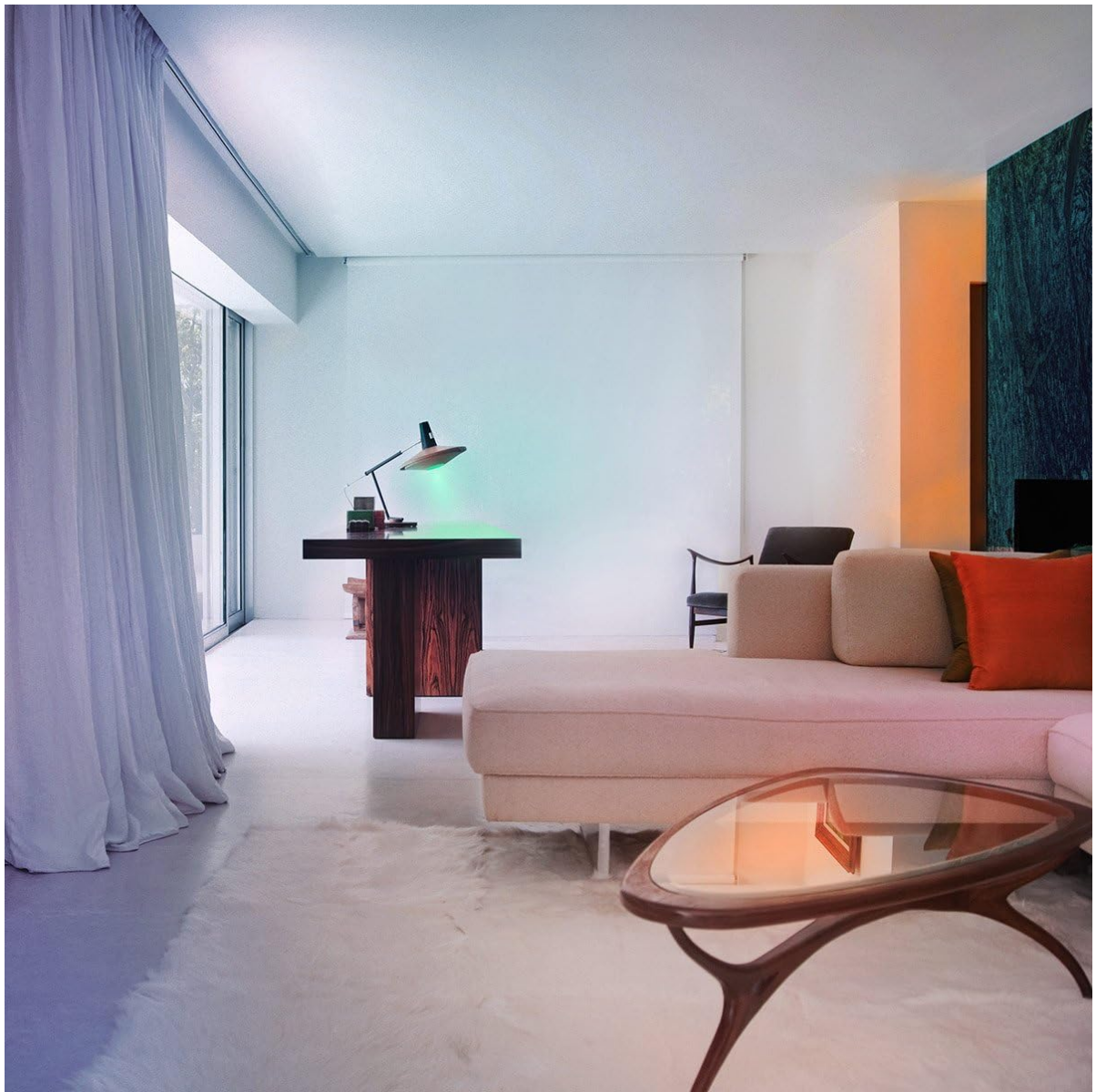


Image: A smartphone screen displaying the LIFX app interface, showing a color wheel for selecting light colors and brightness levels.

## MAINTENANCE

---

The LIFX Mini LED Light Bulb requires minimal maintenance. To ensure optimal performance and longevity:

- **Cleaning:** Ensure the bulb is cool and power is off before cleaning. Wipe the bulb with a soft, dry cloth. Do not use liquid cleaners or abrasive materials.
- **Handling:** Handle the bulb by its base, not the glass, to avoid damage.
- **Storage:** If storing the bulb, keep it in its original packaging in a cool, dry place.

## TROUBLESHOOTING

---

If you encounter issues with your LIFX Mini bulb, try the following steps:

- **Bulb Not Responding:**
  - Check if the bulb is securely screwed into the socket and the power is on.
  - Ensure your Wi-Fi network is active and the bulb is within range.

- Restart the LIFX app.
- Try turning the light switch off and on to power cycle the bulb.
- **Connectivity Issues:**
  - Verify your Wi-Fi router is operating on 802.11b,g,n standards.
  - Ensure your mobile device is connected to the same 2.4GHz Wi-Fi network during initial setup.
  - If the issue persists, try resetting the bulb (refer to the LIFX app or online support for specific reset procedures).
- **Voice Control Not Working:**
  - Confirm that your LIFX account is correctly linked to your voice assistant platform (Alexa, HomeKit, Google Assistant).
  - Check the internet connection of your voice assistant device.

## SPECIFICATIONS

Brand	LIFX
Model Name	Mini Color (A19) Wi-Fi Smart LED Light Bulb
Part Number	L3A19MC08E26
Light Type	LED
Special Feature	Dimmable, Color Changing
Wattage	9 Watts
Incandescent Equivalent	60 Watts
Brightness	800 Lumens
Bulb Shape Size	A19
Bulb Base	E26
Color Temperature	2500K to 9000K (Full Range Warm to Cool White)
Voltage	100-240V AC, 50/60 Hz
Control Method	Voice, App (Wi-Fi)
Indoor/Outdoor Usage	Indoor
Material	Copper
Product Dimensions	2.17"W x 3.98"H
Item Weight	5.1 ounces

**3.98"**



**2.17"**

Image: The LIFX Mini LED Light Bulb shown with its dimensions: 2.17 inches width and 3.98 inches height.

## OFFICIAL PRODUCT VIDEO

---



Video: An official product video demonstrating the features and usage of LIFX Mini light bulbs, including color changing and scheduling capabilities. This video showcases the versatility of LIFX Mini bulbs in different settings.

## WARRANTY AND SUPPORT

---

The LIFX Mini 800-Lumen LED Light Bulb (L3A19MC08E26) comes with a **2-year warranty** from the date of purchase.

For technical support, warranty claims, or additional product information, please visit the official LIFX website or contact their customer service department. Keep your proof of purchase for warranty validation. You can also visit the [LIFX Store on Amazon](#) for more products and information.