

WAC Lighting R3ARDT-F930-WT

WAC Lighting R3ARDT-F930-WT Aether Round Trim LED Light Engine Instruction Manual

Model: R3ARDT-F930-WT

INTRODUCTION

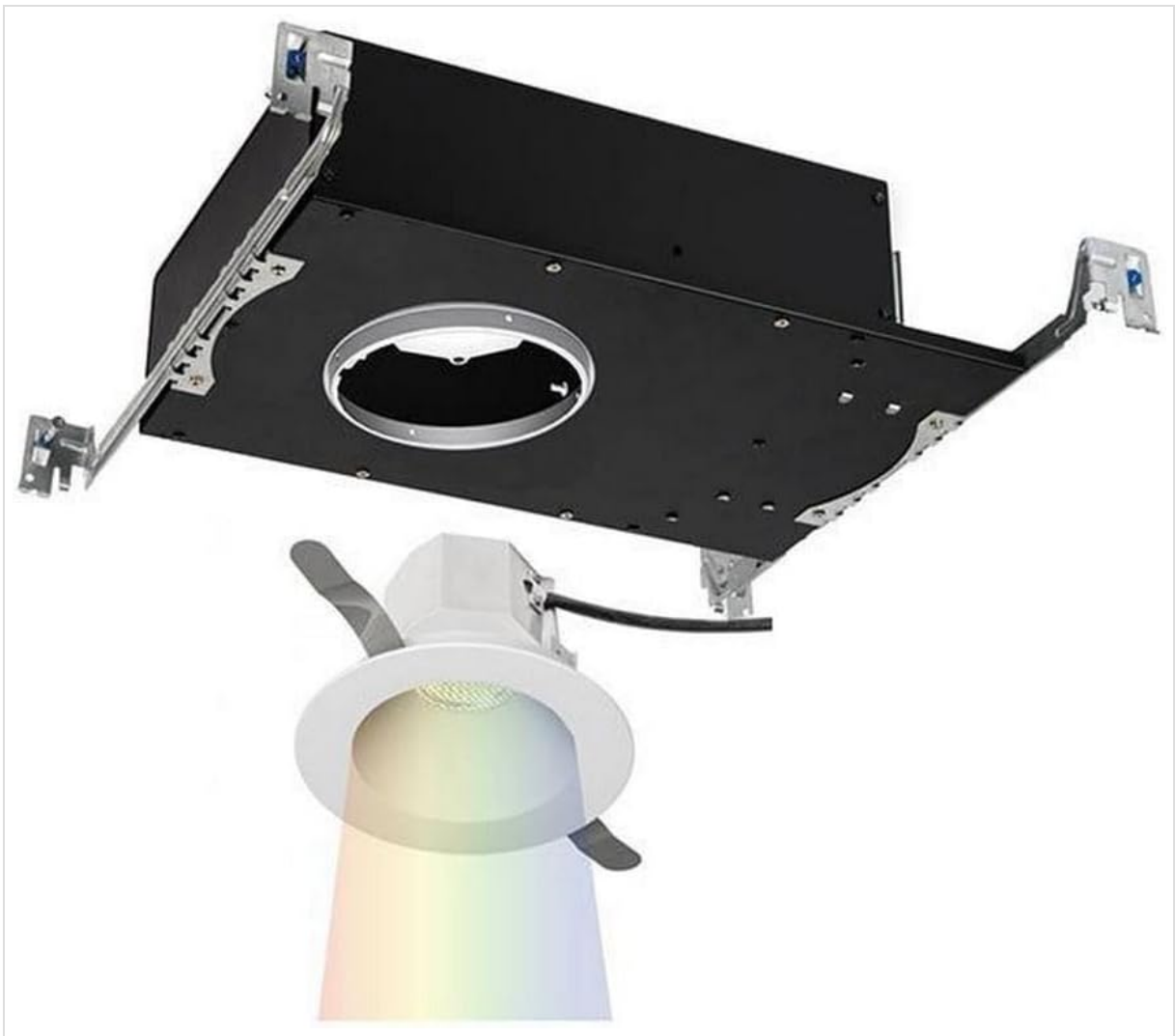
This manual provides detailed instructions for the installation, operation, and maintenance of the WAC Lighting R3ARDT-F930-WT Aether Round Trim with 90 CRI LED Light Engine. The Aether series is designed for high performance recessed lighting applications, featuring energy efficiency and suitability for wet locations. This trim is specifically engineered to fit into tight plenum spaces due to its compact housing height.

PRODUCT FEATURES

- **Versatile Design:** Available in round, square, flangeless invisible, adjustable, and wall wash configurations.
- **Compact Size:** Features a 4.5-inch housing cutout with an approximately 3.5-inch aperture, and a 3.5-inch housing height, ideal for tight plenum spaces.
- **Integrated LED:** Includes a replaceable LED Light Engine with 90 CRI, 3000K Soft White color temperature, and a 60,000-hour rated lifespan.
- **Dimming Capability:** Smooth and continuous dimming down to 1% with compatible electronic low voltage (ELV) or 0-10V dimmers.
- **Certifications:** ETL and cETL wet location listed, Energy Star compliant.

SETUP AND INSTALLATION

Proper installation is crucial for the safe and optimal performance of your WAC Lighting Aether Round Trim. This trim is designed for use with specific housing units. Always ensure power is disconnected at the circuit breaker before beginning any installation.

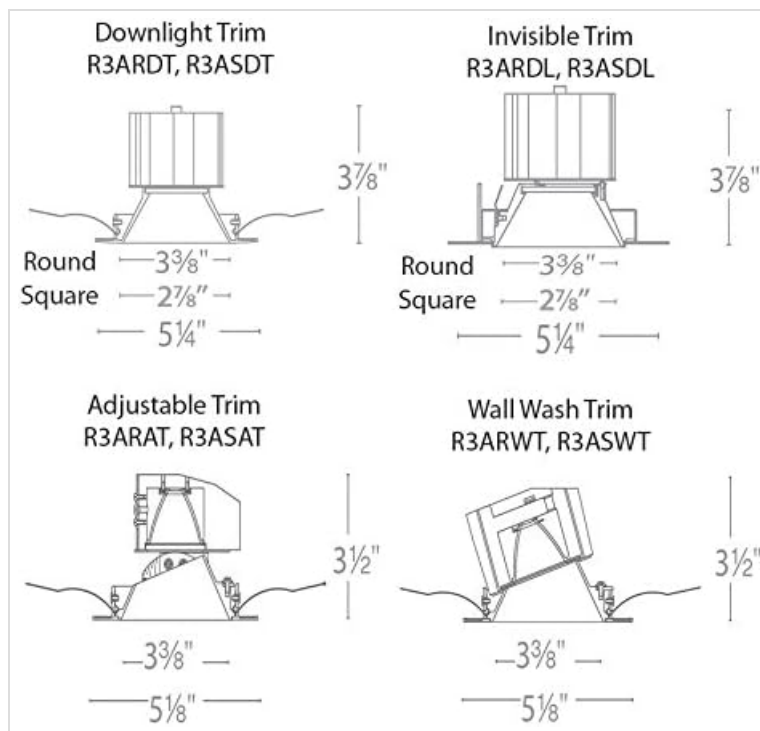


This image displays the WAC Lighting Aether Round Trim LED Light Engine alongside its compatible recessed housing unit, illustrating how the trim integrates into the ceiling fixture.

Installation Steps:

1. **Prepare Housing:** Ensure you are using the compatible housing unit, either HR-3LED-H17A or HR-3LED-H17AC. The housing should be installed according to its own instructions, ensuring a 4.5-inch cutout is prepared in the ceiling.
2. **Connect Wiring:** With power off, connect the wiring from the trim's LED light engine to the housing's electrical connections following local electrical codes.
3. **Insert Trim:** Carefully insert the Aether Round Trim into the housing unit. The trim is designed to fit snugly into the 3.5-inch aperture.
4. **Secure Trim:** Engage any clips or springs on the trim to secure it firmly within the housing and flush with the ceiling surface.

The compact design of the Aether series allows it to fit into challenging tight plenum spaces, making it suitable for various ceiling constructions.



This diagram provides detailed dimensions and visual representations of various WAC Lighting Aether trim types, including Downlight, Invisible, Adjustable, and Wall Wash, with their respective cutout and aperture sizes.

OPERATING INSTRUCTIONS

Once installed, the WAC Lighting Aether Round Trim operates like any standard light fixture. It is designed for use with a wall switch.

- **Power On/Off:** Use a standard wall switch to turn the light fixture on or off.
- **Dimming:** For dimming functionality, ensure the fixture is connected to a compatible electronic low voltage (ELV) or 0-10V dimmer switch. The fixture supports smooth and continuous dimming down to 1% of its maximum brightness.

MAINTENANCE

The WAC Lighting Aether Round Trim LED Light Engine requires minimal maintenance. Regular cleaning will help maintain its appearance and performance.

- **Cleaning:** Disconnect power before cleaning. Use a soft, dry, or slightly damp cloth to wipe the trim. Avoid abrasive cleaners, solvents, or harsh chemicals, as these can damage the finish.
- **LED Module:** The LED light engine is designed for a long lifespan (60,000 rated hours). If replacement is ever necessary, consult a qualified electrician or WAC Lighting customer support.

TROUBLESHOOTING

If you encounter issues with your WAC Lighting Aether Round Trim, please refer to the following common troubleshooting steps:

- **Light Not Turning On:** Check the circuit breaker to ensure power is supplied to the fixture. Verify all electrical connections are secure.
- **Flickering or Inconsistent Dimming:** Ensure the dimmer switch is compatible with LED fixtures and specifically with ELV or 0-10V systems. Check for loose wiring connections.
- **Reduced Light Output:** While unlikely with LEDs, ensure the fixture is not obstructed. If the issue persists, contact customer support.

For persistent issues or complex electrical problems, it is recommended to consult a qualified electrician.

SPECIFICATIONS

Feature	Detail
Brand	WAC Lighting
Model Name	Aether Round Trim with 90 CRI LED Light Engine Flood 40 Beam 3000K Soft White
Part Number	R3ARDT-F930-WT
Light Source Type	LED
Color Temperature	3000 Kelvin (Soft White)
Brightness	950 Lumens
Wattage	22.5 watts
Voltage	120 Volts
Product Dimensions	5.25 x 5.25 x 3.88 inches
Item Weight	2.65 pounds
Material	Aluminum, Glass (Shade)
Finish	Polished
Mounting Type	Protruding (Recessed)
Specification Met	ADA, Energy Star
Included Components	Light Fixture, Mounting Hardware, Installation Instructions

WARRANTY INFORMATION

WAC Lighting provides a manufacturer's warranty for this product:

- **Functional Warranty:** 5 years
- **Finish Warranty:** 2 years

Please retain your proof of purchase for warranty claims. For detailed terms and conditions, refer to the official WAC Lighting warranty documentation or contact customer support.

CUSTOMER SUPPORT

For further assistance, technical support, or warranty inquiries regarding your WAC Lighting R3ARDT-F930-WT Aether Round Trim, please contact WAC Lighting customer service. You can typically find contact information on the official WAC Lighting website or through your product retailer.

WAC Lighting Website: www.waclighting.com

