

## Jool Baby MUL-104

# Jool Baby Child Safety Strap Locks (Model MUL-104)

## Instruction Manual

### 1. IMPORTANT SAFETY INFORMATION

---

Jool Baby Child Safety Strap Locks are designed to help prevent young children and pets from accessing potentially hazardous areas such as cabinets, drawers, refrigerators, and other appliances. Always supervise children, even when safety devices are installed. This product is a deterrent and not a substitute for adult supervision.

- Regularly inspect locks for proper adhesion and function.
- Discontinue use if the product becomes damaged or detached.
- Keep small parts away from children to prevent choking hazards.

**Joolbaby** 

**KEEP STUFF IN.  
KEEP KIDS OUT.**

Image: A child attempting to open a dark wooden cabinet, which is secured by a white Jool Baby child safety strap lock. This illustrates the product's function in preventing access.

# PROTECT THE ONES YOU LOVE



Image: A collage of four images demonstrating common household hazards that Jool Baby locks help prevent. These include a child reaching into a trash can, a child near a washing machine, a dog rummaging in a trash can, and a child reaching for cleaning supplies under a sink.

## 2. PRODUCT OVERVIEW

The Jool Baby Child Safety Strap Locks are multi-purpose adhesive locks designed to secure various household items and areas. They feature a flexible strap and strong 3M adhesive for easy, drill-free installation.

- **Multi-Use Design:** Suitable for cabinets, drawers, fridges, freezers, ovens, toilets, and trash cans.
- **No Tools Required:** Installs easily with 3M adhesive, eliminating the need for drilling.
- **Adjustable Length:** The strap can be adjusted to fit gaps between 3 to 7 inches.
- **Child-Resistant Mechanism:** Features a slide-and-pull lock that is easy for adults but difficult for toddlers.

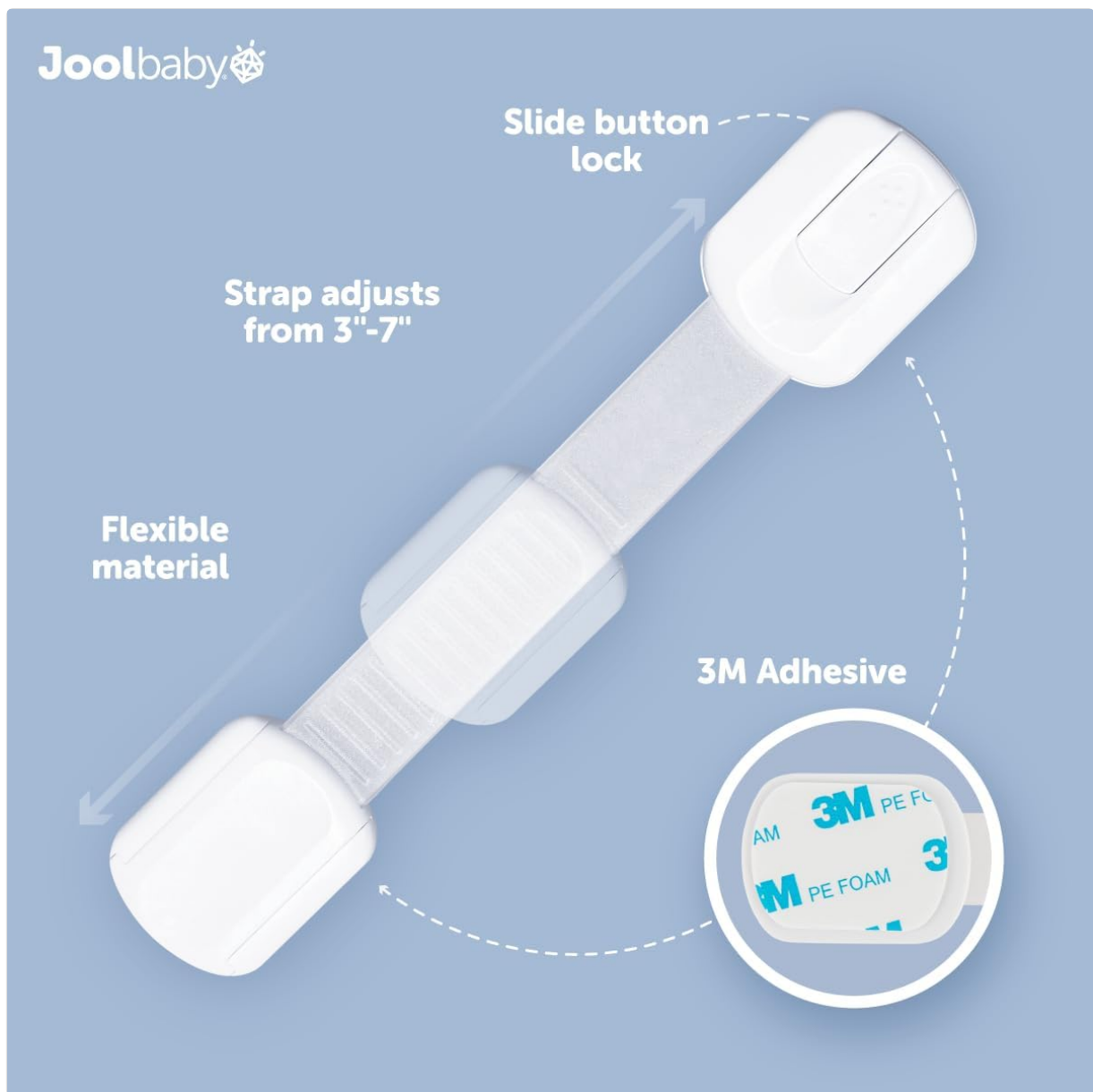


Image: A diagram highlighting the key features of the Jool Baby strap lock, including the slide button lock, flexible material, adjustable strap length (3"-7"), and 3M adhesive backing.

### 3. PACKAGE CONTENTS

---

Your Jool Baby Child Safety Strap Locks package includes:

- 4 x Jool Baby Child Safety Strap Locks (Model MUL-104)

### 4. INSTALLATION INSTRUCTIONS

---

Follow these steps for proper installation to ensure maximum security:

1. **Prepare the Surface:** Clean and dry the surfaces where the adhesive pads will be applied. Ensure they are free from dust, grease, or moisture.
2. **Adjust Strap Length:** Slide out part 'A' from the lock mechanism and adjust the strap to the desired length. Ensure the strap is long enough to bridge the gap between the two surfaces you wish to secure, but not so long that it allows significant opening. **Note: Once locked, the strap length cannot be adjusted.**
3. **Apply Adhesive:** Remove the protective backing from the 3M adhesive pads on both ends of the

strap lock.

4. **Position and Press:** Firmly press one end of the lock onto the first surface (e.g., cabinet frame). Hold for at least 30 seconds to ensure strong adhesion. Then, align the second end with the other surface (e.g., cabinet door) and press firmly, holding for 30 seconds.
5. **Allow to Cure:** For optimal adhesion, allow the adhesive to cure for at least 24 hours before actively using the lock.

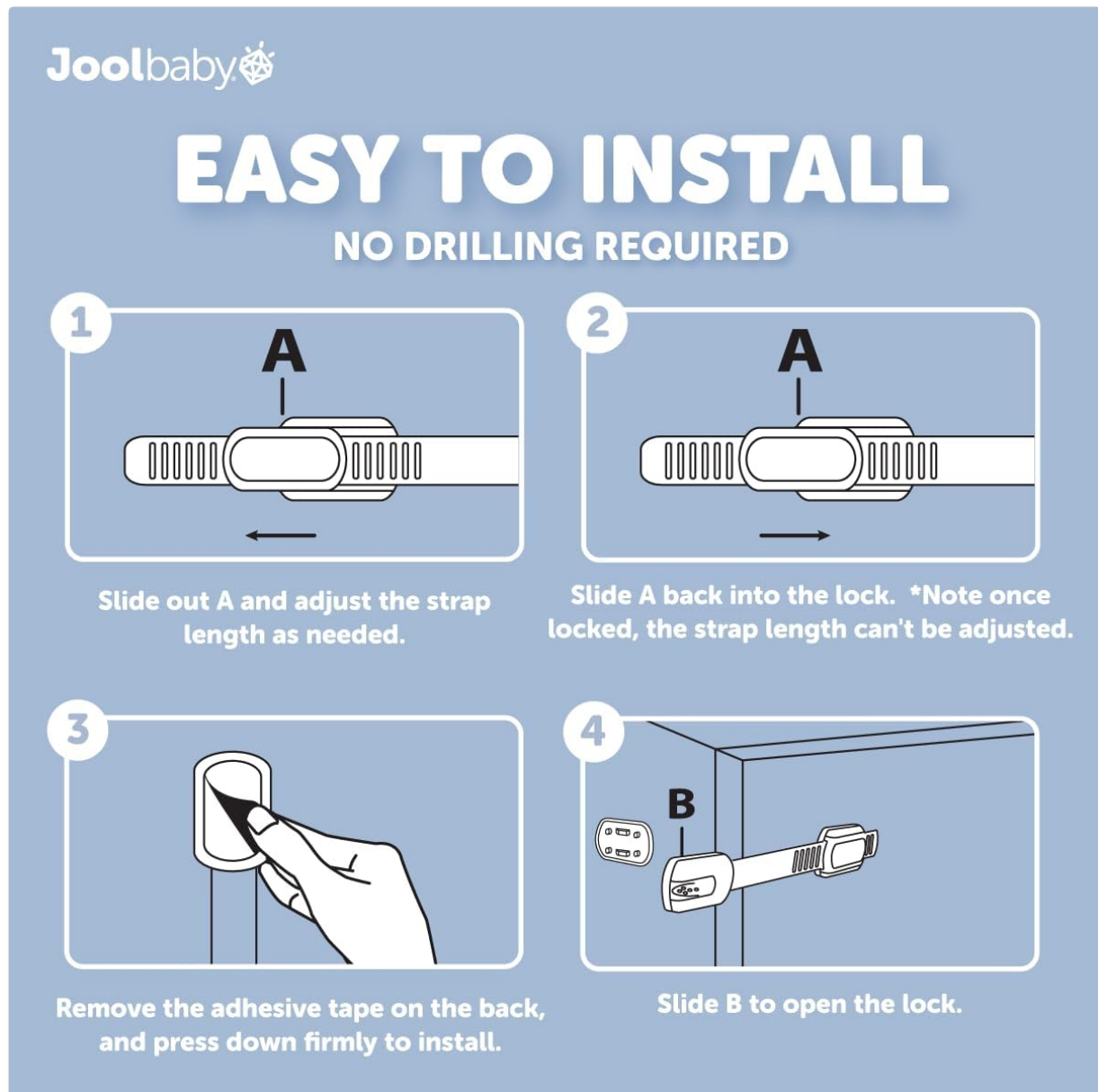


Image: A four-panel diagram illustrating the installation process. Panel 1 shows sliding out part 'A' to adjust strap length. Panel 2 shows sliding 'A' back into the lock. Panel 3 shows removing the adhesive tape. Panel 4 shows sliding part 'B' to open the lock after installation.

## 5. OPERATING THE LOCKS

To open the Jool Baby Child Safety Strap Lock:

1. Locate the slide button on one of the lock ends.
2. Press the button and slide it to release the strap from the locking mechanism.
3. Once released, the strap can be moved aside, allowing access to the secured area.

To close the Jool Baby Child Safety Strap Lock:



1. Align the free end of the strap with the locking mechanism.
2. Push the strap firmly into the mechanism until you hear a click, indicating it is securely locked.



## WORKS ON ALL SURFACES



Refrigerator



Trash Can



Cabinet



Oven



Drawer



Toilet

Image: A collage of six images demonstrating the versatility of the Jool Baby strap locks. They are shown securing a refrigerator, trash can, cabinet, oven, drawer, and toilet, highlighting their application on various surfaces.

## 6. MAINTENANCE AND CARE

---

To ensure the longevity and effectiveness of your Jool Baby Child Safety Strap Locks:

- **Cleaning:** Wipe the locks with a damp cloth and mild soap. Avoid harsh chemicals or abrasive cleaners that could damage the plastic or adhesive.
- **Adhesive Longevity:** The 3M adhesive is designed for strong, long-lasting hold. Avoid repositioning the locks frequently, as this can weaken the adhesive.
- **Removal:** If removal is necessary, gently heat the adhesive with a hairdryer on a low setting for 30-60 seconds. This will soften the adhesive, allowing for easier removal without damaging most surfaces. Carefully peel off the lock. Any remaining adhesive residue can often be removed with a soft cloth and a small amount of rubbing alcohol or a specialized adhesive remover.

## 7. TROUBLESHOOTING

---

- **Lock Not Sticking:** Ensure the surface was thoroughly cleaned and dried before application. Press firmly for the recommended time (at least 30 seconds) and allow 24 hours for the adhesive to cure. Extreme temperatures or humidity can affect adhesion.
- **Child Can Open the Lock:** Verify that the strap is adjusted to the shortest possible length that still allows the door/drawer to close. The slide-and-pull mechanism requires dexterity that most toddlers lack. If a child consistently defeats the lock, consider repositioning it or using an additional lock for enhanced security.
- **Strap Comes Loose from Mechanism:** Ensure the strap is fully inserted and clicked into place when closing. If the strap consistently detaches, the lock may be damaged and require replacement.

## 8. PRODUCT SPECIFICATIONS

Feature	Detail
Brand	Jool Baby
Model Name	Child Safety Strap Locks
Model Number	MUL-104
Lock Type	Child Safety Lock
Material	Plastic
Color	White
Item Dimensions (L x W x H)	10 x 6.5 x 0.5 inches
Item Weight	3.87 ounces
Number of Pieces	4
Special Feature	Multi-purpose

## 9. WARRANTY AND SUPPORT

Jool Baby stands behind the quality of its products. For any questions, concerns, or support needs regarding your Child Safety Strap Locks, please contact Jool Baby customer service. Please refer to the product packaging or the official Jool Baby website for the most current warranty information and contact details.

Thank you for choosing Jool Baby for your childproofing needs.