



Manuals.plus /

› PB SWISS TOOLS /

› PB Swiss Tools 8640ESD SwissGrip ESD Precision Screwdriver Set Instruction Manual

PB SWISS TOOLS 8640ESD

PB Swiss Tools 8640ESD SwissGrip ESD Precision Screwdriver Set Instruction Manual

Model: 8640ESD

1. PRODUCT OVERVIEW

The PB Swiss Tools 8640ESD SwissGrip Precision Screwdriver Set is designed for delicate work with electronic components and other applications where electrostatic discharge (ESD) can cause damage. This set includes six precision flathead screwdrivers with ESD-safe handles and a convenient stand for organization.

Key features include:

- **ESD Protection:** Specifically designed to prevent electrostatic discharge, protecting sensitive electronics.
- **SwissGrip Handles:** Ergonomically shaped handles for comfortable and precise control.
- **Precision Flathead Tips:** Sizes included are 0.2 x 1.2, 0.25 x 1.5, 0.3 x 1.8, 0.4 x 2.0, 0.4 x 2.5, and 0.5 x 3.0 mm.
- **Durable Construction:** Made with high-quality materials for long-lasting performance.
- **Organizing Stand:** A practical stand to keep your screwdrivers organized and easily accessible.



Image 1.1: The PB Swiss Tools 8640ESD SwissGrip ESD Precision Screwdriver Set, showing the six screwdrivers neatly arranged in their grey stand.



100% Swiss Made



Lifetime Guarantee

Image 1.2: Logos indicating "100% Swiss Made" and a "Lifetime Guarantee," highlighting the product's quality and origin.

2. SETUP

The PB Swiss Tools 8640ESD screwdriver set requires minimal setup. Upon unboxing, ensure all components are present and undamaged.

1. **Unpack Components:** Carefully remove the screwdrivers and the stand from their packaging.
2. **Inspect for Damage:** Check each screwdriver and the stand for any signs of shipping damage. If any damage is found, contact customer support.
3. **Place Screwdrivers in Stand:** Insert each screwdriver into its designated slot in the stand. The stand is designed to hold the screwdrivers securely and provide easy access.
4. **Position Stand:** Place the stand on a stable, flat surface in your workspace, ensuring it is easily reachable but not obstructing your work area.

ELEKTRONIK-SCHRAUBENZIEHER ELECTRONICS SCREWDRIVERS

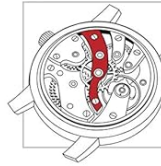
PB SWISS TOOLS

Work with the best.



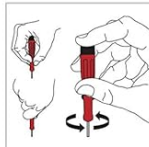
Drehkappe – Farbcodierung nach Schraubenprofil

Turnable head – Color coding
according to screw profile



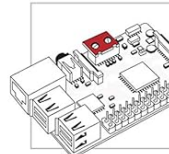
Präzisions- und Feinmechanik

Precision mechanics



Ergonomisches Design

Ergonomic design



Für eine umfangreiche EPA-Schutzzone

For an extensive EPA protection zone



Praktischer Tisch- und Wandhalter: mit einer Hand bedienbar

Practical table and wall rack: can be
used with one hand

 ESD: Elektrostatische Entladung
Electrostatic Discharge
EPA: Elektrostatisch geschützter Bereich
Electrostatic Protected Area
EGB: Elektrostatisch gefährdete Bauteile
Electrostatically vulnerable components

Image 2.1: A diagram illustrating key features of PB Swiss Tools electronics screwdrivers, including the rotatable head with color coding, ergonomic design, and the practical table/wall rack. It also highlights the extensive EPA protection zone and precision mechanics.

3. OPERATING INSTRUCTIONS

These precision screwdrivers are specifically designed for tasks requiring fine control and ESD protection. Always select the correct screwdriver tip size for the fastener to prevent damage to both the fastener and the tool.

1. **Select the Correct Size:** Identify the appropriate flathead screwdriver size that matches the screw you intend to work with. Using an incorrect size can strip the screw head or damage the screwdriver tip.
2. **Ensure ESD Safety:** When working with sensitive electronic components, ensure you are in an Electrostatic Protected Area (EPA). The ESD-safe handles of these screwdrivers help dissipate static charges, but proper grounding practices (e.g., anti-static mat, wrist strap) should also be followed.
3. **Grip and Apply Pressure:** Hold the screwdriver firmly by the SwissGrip handle. Place the tip into the screw head. Apply gentle, consistent downward pressure while turning the screwdriver. The rotatable head allows for continuous turning with one hand, improving efficiency and precision.
4. **Turning:** Turn clockwise to tighten screws and counter-clockwise to loosen them. For precision work, apply controlled force to avoid over-tightening or stripping.
5. **Storage:** After use, return the screwdriver to its designated slot in the stand to maintain organization and protect the tips.



Image 3.1: A technician using a precision screwdriver to perform maintenance in an aircraft cockpit, demonstrating the application of these tools in sensitive environments.



Image 3.2: A technician working with a precision screwdriver on intricate wiring and components within a train's interior, highlighting the tool's suitability for detailed electrical work.



Image 3.3: A technician using a precision screwdriver to perform maintenance on a helicopter engine compartment, illustrating the tool's use in high-precision mechanical and electronic applications.

4. MAINTENANCE

Proper maintenance ensures the longevity and performance of your PB Swiss Tools screwdrivers.

- **Cleaning:** Wipe the screwdrivers clean with a soft, dry cloth after each use to remove dirt, grease, or debris. For stubborn grime, a slightly damp cloth with mild soap can be used, followed by thorough drying. Avoid harsh chemicals or abrasive cleaners.
- **Storage:** Always store the screwdrivers in their provided stand or a suitable tool organizer to protect the tips from damage and prevent loss. Store in a dry environment to prevent corrosion.
- **Inspection:** Periodically inspect the screwdriver tips for wear or damage. A worn tip can slip and damage fasteners. Replace screwdrivers if the tips are significantly damaged.
- **ESD Properties:** The ESD properties of the handles are designed for durability. However, avoid exposing the handles to extreme temperatures or harsh chemicals that could compromise their anti-static properties.

5. TROUBLESHOOTING

This section addresses common issues you might encounter while using your precision screwdriver set.

- **Screwdriver Tip Slipping:**
 - Ensure you are using the correct size flathead tip for the screw.
 - Apply adequate downward pressure to keep the tip engaged with the screw head.
 - Inspect the screw head for damage or stripped grooves.
 - Check the screwdriver tip for wear; a worn tip may need replacement.
- **Difficulty Loosening/Tightening Screws:**

- Ensure the screw is not cross-threaded or seized.
 - For very tight screws, ensure you have a firm grip and are applying consistent torque. Avoid excessive force that could damage the tool or fastener.
- **Static Discharge Concerns:**
 - While the screwdrivers are ESD-safe, always work in a properly grounded Electrostatic Protected Area (EPA) when handling sensitive electronics.
 - Use additional ESD protection such as wrist straps and anti-static mats as required by your work environment.

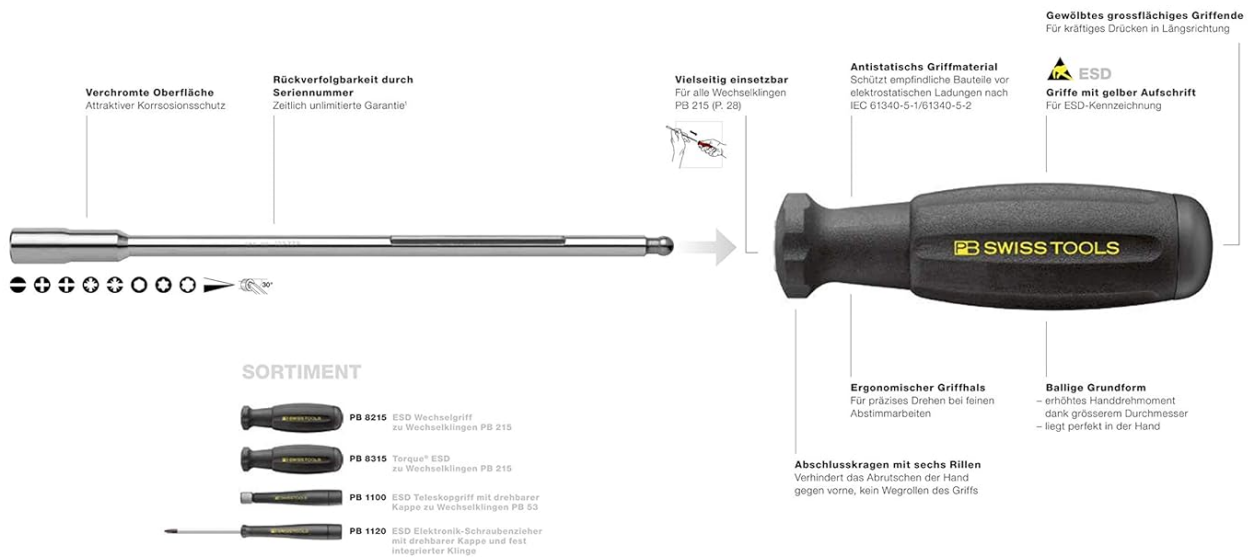
6. SPECIFICATIONS

Detailed specifications for the PB Swiss Tools 8640ESD SwissGrip ESD Precision Screwdriver Set.

Feature	Detail
Model Number	8640ESD
Brand	PB SWISS TOOLS
Head Style	Flathead
Set Includes	6 Precision Flathead Screwdrivers (0.2x1.2, 0.25x1.5, 0.3x1.8, 0.4x2.0, 0.4x2.5, 0.5x3.0 mm) and Stand
Recommended Uses	Electronics Item, Furniture Assembly, Precision Mechanics
Item Weight	0.44 Pounds (approx. 7 ounces / 134g)
Product Dimensions (L x W x H)	6.5 x 2.2 x 1.81 inches
ESD Safe	Yes
Country of Origin	Switzerland (100% Swiss Made)

SCHRAUBENZIEHER ESD

Der Blitzableiter.



Arbeitsplätze an denen empfindliche elektronische Bauteile und Baugruppen (ESDs) verarbeitet werden, müssen den internationalen ESD-Schutzbestimmungen entsprechen. Dann die größte Gefahr beim Arbeiten mit ESDs und Komponenten bilden elektrostatische Entladungen, welche die empfindlichen Bauteile zerstören.

Wer diesen Schutzbestimmungen für ESD-sichere Arbeitsplätze nachkommt, muss neben Böden, Stühle, Arbeitsplatzoberflächen, Hilfsmittel, Geräte und Maschinen, auch ESD-taugliche Werkzeuge verwenden. PB Swiss Tools bietet hier ein geeignetes Sortiment.



ESD-Werkzeuge sind elektrostatisk ableitend
Die Griffe garantieren eine sichere Entladung, so dass empfindliche Bauteile keinen Schaden nehmen
ESD-Werkzeuge sind Voraussetzung für einen ESD-sicheren Arbeitsplatz

Image 6.1: A diagram detailing the features of PB Swiss Tools ESD screwdrivers, including the antistatic material, ergonomic handle, and the secure fit of the blade in the handle. It also shows the various types of interchangeable blades available in the product line.

7. WARRANTY AND SUPPORT

PB Swiss Tools products are known for their quality and durability.

- **Lifetime Guarantee:** This product comes with a Lifetime Guarantee, reflecting the manufacturer's confidence in its quality and craftsmanship. For details regarding the terms and conditions of the guarantee, please refer to the official PB Swiss Tools website or contact their customer service.
- **Customer Support:** For any questions, technical assistance, or warranty claims, please visit the official PB Swiss Tools website or contact their authorized distributors.