

[Manuals.plus](#) /

› [SANIFLO](#) /

› SANIFLO Sanimarin 31 Electric Marine Macerating Toilet (12V) Instruction Manual

SANIFLO SN31

SANIFLO Sanimarin 31 Electric Marine Macerating Toilet (12V)

Model: SN31 | Brand: SANIFLO

1. INTRODUCTION

This manual provides detailed instructions for the installation, operation, and maintenance of your SANIFLO Sanimarin 31 Electric Marine Macerating Toilet. The Sanimarin 31 is a compact, low-profile automatic toilet system designed for marine environments, featuring a stainless steel macerating blade and a control panel. Key features include:

- Compact and efficient design suitable for limited spaces.
- Quiet operation with a soft-close seat.
- Powerful stainless steel macerating blade for waste processing.
- Dual flush modes (Eco and Normal) for water and energy efficiency.



Image 1.1: Front view of the SANIFLO Sanimarin 31 Electric Marine Macerating Toilet.

2. SAFETY INFORMATION

Read all instructions carefully before installation and operation. Failure to follow these instructions may result in product damage, property damage, or personal injury.

- Ensure the power supply is disconnected before performing any installation, maintenance, or troubleshooting.
- This unit operates on 12V DC. Verify your vessel's electrical system matches this requirement.
- Installation should be performed by a qualified technician if you are unfamiliar with marine plumbing and

electrical systems.

- Do not dispose of foreign objects (e.g., sanitary products, paper towels, wipes, plastics) into the toilet, as this can cause blockages and damage the macerator.
- Ensure proper ventilation in the installation area.

3. PACKAGE CONTENTS

Verify that all components are present and undamaged upon unpacking:

- Sanimarin 31 Electric Marine Macerating Toilet unit
- Control Panel
- Soft-close toilet seat
- Mounting hardware
- Instruction Manual

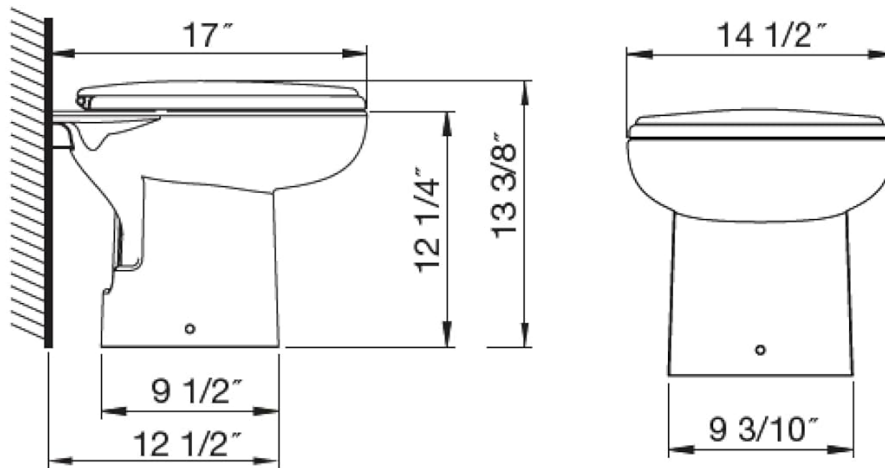
4. SETUP AND INSTALLATION

The Sanimarin 31 is designed for floor-mounted installation. Ensure adequate space and access for plumbing and electrical connections.

4.1. Dimensions

Refer to the diagram below for product dimensions to ensure proper fit in your desired location.

DIMENSIONS



Sanimarin® 31



Image 4.1: Dimensional drawing of the Sanimarin 31 toilet, showing height, width, and depth measurements.

4.2. Water Supply Connection

- The toilet uses onboard freshwater or outside pressurized water.
- Minimum water supply pressure required is 25 PSI (1.7 bar).
- Recommended pump flow rate is 2.9 GPM.
- Connect the water inlet to a suitable freshwater supply line. A shutoff valve is recommended for maintenance.

4.3. Waste Discharge Connection

- The macerator can discharge waste up to 10 feet vertically or 100 feet horizontally.
- The discharge outlet is located at the top left rear of the toilet when viewed from the front.
- Use appropriate marine-grade discharge hose and fittings. A 1-1/4" Fernco adapter may be required for connection to your drain system.

4.4. Electrical Connection

- The unit requires a 12V DC power supply.
- Connect to a dedicated 25 amp circuit.
- Ensure all electrical connections are secure and protected from moisture.

4.5. Mounting

- Secure the toilet to the floor using the provided mounting hardware.
- Ensure the toilet is stable and level after installation.

5. OPERATION

The Sanimarin 31 is operated via a control panel with distinct flush options.

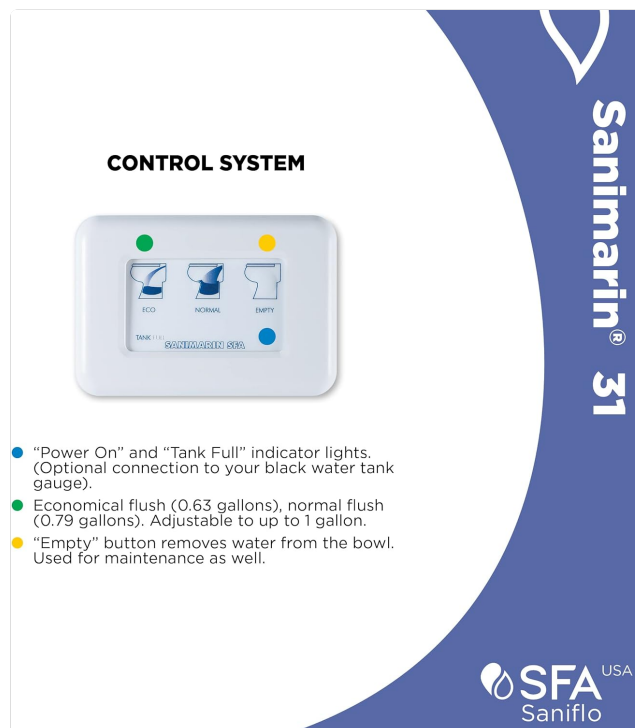


Image 5.1: The Sanimarin 31 control panel with Eco, Normal, and Empty buttons.

5.1. Control Panel Functions

- **Power On Indicator:** A light on the control panel indicates when the unit is powered.
- **Tank Full Indicator:** An optional connection to your black water tank gauge can illuminate an indicator when the tank is full.
- **ECO Flush:** Initiates an economical flush using approximately 0.32 gallons of water.
- **NORMAL Flush:** Initiates a standard flush using approximately 0.63 gallons of water. The flush volume is adjustable up to 1 gallon.
- **EMPTY Button:** Activates the macerator to remove water from the bowl. This function is also used for maintenance procedures.

5.2. Flushing Procedure

1. Ensure the unit is powered on.

2. Select either the **ECO** or **NORMAL** flush button based on your requirement.
3. The macerator will activate, and water will enter the bowl to rinse and discharge waste.
4. Release the button once the flush cycle is complete and the bowl is clean.

6. MAINTENANCE

Regular maintenance ensures optimal performance and longevity of your Sanimarin 31 toilet.

6.1. Cleaning

- Use mild, non-abrasive cleaners specifically designed for marine toilets. Avoid harsh chemicals, bleach, or abrasive pads, as these can damage the toilet's surfaces and internal components.
- Clean the bowl and exterior regularly.
- For thorough cleaning, use the **EMPTY** button to remove water from the bowl before applying cleaner.

6.2. Winterization

If the toilet will be exposed to freezing temperatures, proper winterization is essential to prevent damage.

- Flush the toilet with fresh water several times to clear any waste.
- Disconnect the water supply.
- Use the **EMPTY** button to remove as much water as possible from the bowl and internal pump.
- Introduce non-toxic marine-grade antifreeze into the bowl and flush until antifreeze is visible in the discharge line.

7. TROUBLESHOOTING

This section addresses common issues you might encounter with your Sanimarin 31 toilet.

Problem	Possible Cause	Solution
Toilet does not flush or macerator does not activate.	No power, tripped breaker, loose wiring, motor fault.	Check 12V power supply and circuit breaker. Verify all electrical connections are secure. If problem persists, contact support.
Water level in bowl is too high or does not drain.	Blockage in macerator or discharge line, faulty solenoid valve.	Ensure no foreign objects were flushed. Use the EMPTY button to attempt to clear. Check discharge line for kinks or obstructions. If problem persists, contact support.
Toilet is leaking.	Loose connections, damaged seals or hoses.	Inspect all water inlet and discharge connections for tightness. Check for visible damage to hoses or seals. Tighten or replace as necessary.

Problem	Possible Cause	Solution
Unusual noise during operation.	Foreign object in macerator, worn motor bearings.	Immediately disconnect power. Inspect macerator for foreign objects (refer to safety guidelines). If no foreign object is found or noise persists, contact support.

8. SPECIFICATIONS

Feature	Detail
Model	SN31
Brand	SANIFLO
Voltage	12 Volts DC
Material	Stainless Steel (blade), Plastic (seat)
Color	White
Installation Type	Floor Mounted
Item Weight	36.2 Pounds
Product Dimensions	17 x 15 x 14 inches (Length x Width x Height)
Minimum Water Pressure	25 PSI (1.7 bar)
Recommended Pump Flow Rate	2.9 GPM
Vertical Discharge Capability	Up to 10 feet
Horizontal Discharge Capability	Up to 100 feet
Eco Flush Volume	0.32 gallons
Normal Flush Volume	0.63 gallons (adjustable up to 1 gallon)
UPC	859925002602

9. WARRANTY AND SUPPORT

SANIFLO products are manufactured to high standards. For specific warranty details, please refer to the warranty card included with your product or visit the official SANIFLO website. EU spare part availability is typically 2 years.

For technical assistance, troubleshooting beyond this manual, or to inquire about spare parts, please contact

SANIFLO customer support. Contact information can be found on the SANIFLO website or in your product packaging.

You can visit the SANIFLO Store for more information:[SANIFLO Store](#)