



Manuals.plus /

› **SUNUV** /

› SUNUV SUN8 UV Light for Nails, UV LED Nail Lamp with 3 Timer Settings, Auto Sensor LCD Display Compatible with All Gel Polish Pink

SUNUV SUN8

SUNUV SUN8 UV LED Nail Lamp User Manual

Model: SUN8 | Brand: SUNUV

1. PRODUCT OVERVIEW

The SUNUV SUN8 UV LED Nail Lamp is designed for curing various gel nail polishes, including base coat, top coat, color gel, hard gels, builder gel, acrylic, sculpture gel, and gem glue. It features hybrid UV+LED light beads for efficient and fast curing, smart sensor activation, and multiple timer settings.



Figure 1: Front view of the SUNUV SUN8 UV LED Nail Lamp. This lamp is designed for efficient and quick curing of various gel nail polishes.

2. WHAT'S IN THE BOX

Upon unboxing, please verify that all components are present and in good condition. The standard package for your SUNUV SUN8 UV LED Nail Lamp includes the following items:

- SUNUV SUN8 Gel Light (Nail Lamp Unit)
- Power Adapter
- Product Manual (this document)
- Gel Nail Polish Application Guide

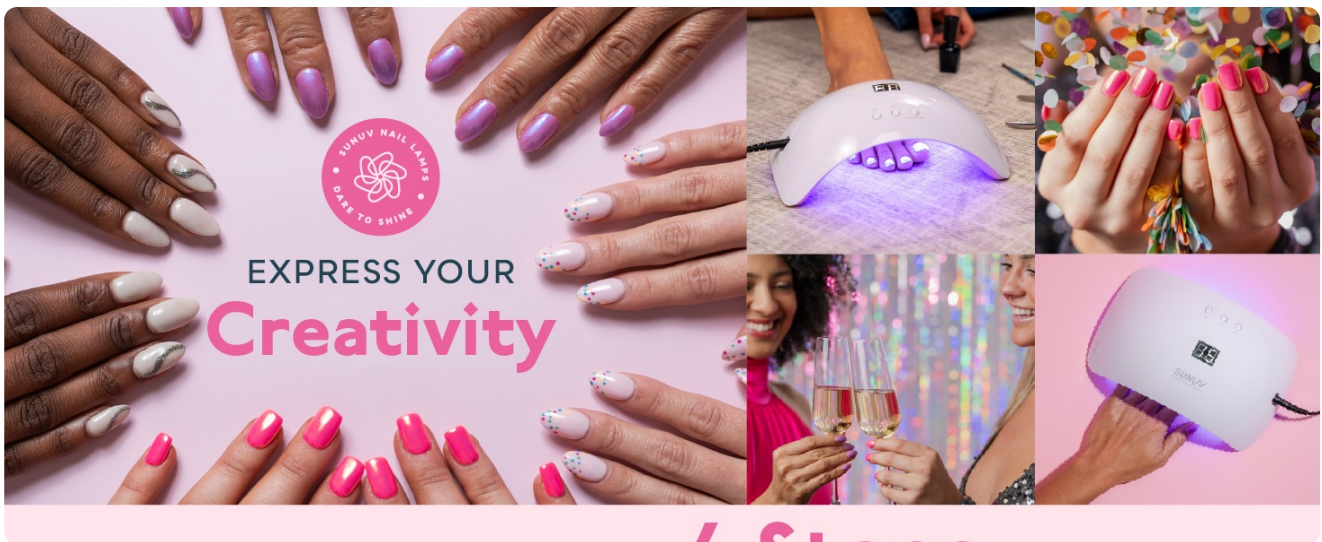


Figure 2: Illustration of the items included in the SUNUV SUN8 product package, showing the nail lamp, power adapter, and documentation.

3. SETUP AND INSTALLATION

Follow these steps to set up your SUNUV SUN8 UV LED Nail Lamp for first use:

1. **Unpack:** Carefully remove the nail lamp and all accessories from the packaging.
2. **Placement:** Place the lamp on a stable, flat, and dry surface. Ensure there is adequate ventilation around the unit.
3. **Connect Power:** Insert the DC plug of the power adapter into the power input port located at the back of the nail lamp.
4. **Plug In:** Plug the power adapter into a suitable electrical outlet. The LCD display will illuminate, indicating the lamp is ready for use.



Figure 3: The compact and portable design of the SUNUV SUN8 lamp, showing its dimensions (8.9 in. length, 5.4 in. width, 3.3 in. height) and 1.8M power cord.

4. OPERATING INSTRUCTIONS

The SUNUV SUN8 lamp offers intuitive operation with smart features and multiple timer settings.

4.1. Power On/Off

The device powers on automatically when connected to an electrical outlet. To turn off, simply unplug the power adapter from the outlet.

4.2. Timer Settings and LCD Display

The lamp features three preset timer buttons and an automatic sensor mode. The LCD display shows the remaining curing time.

- **30s Button:** Press for 30 seconds of curing, suitable for base coats or thin gel polishes.
- **60s Button:** Press for 60 seconds of curing, ideal for top coats or thicker gel polishes.
- **99s Button (Low Heat Mode):** Press for 99 seconds of curing. This mode gradually increases power over time to alleviate any pain caused by curing certain gels, making it suitable for sensitive nails or builder gels.



Figure 4: Close-up view of the SUNUV SUN8 control panel, highlighting the 30s, 60s, and 99s (Low Heat Mode) timer buttons and the digital LCD display.

4.3. Smart Infrared Sensor

The lamp is equipped with a smart infrared sensor for automated operation. When hands are inserted into the lamp, the sensor detects them and automatically starts the curing process. When hands are removed, the lamp turns off. This feature works without needing to press any timer buttons, defaulting to a 99-second cycle if no button is pressed.

WHAT'S IN The Box?

- + SUN8 Nail Lamp
- + Power Adaptor
- + User Manual
- + Gel Polish Application Manual



Figure 5: Diagram illustrating the smart infrared sensor functionality: the lamp automatically turns on when hands are inserted and off when removed.

4.4. Gel Polish Compatibility

The SUNUV SUN8 lamp is compatible with most types of gel nail polishes, including but not limited to:

- Base Coat
- Top Coat
- Color Gel
- Hard Gels
- Builder Gel
- Acrylic Gel
- Sculpture Gel
- Gem Glue



ALL GEL NAIL POLISH Compatible

Figure 6: Examples of various gel nail polish applications on fingernails and toenails, demonstrating the wide compatibility of the SUNUV SUN8 lamp.

4.5. Application Steps (General Guide)

For optimal results, follow these general steps for gel nail polish application and curing. Always refer to your specific gel polish manufacturer's instructions for precise curing times.

1. **Prep:** Clean and prepare your nails. Apply a thin layer of base coat.
2. **Cure Base Coat:** Place your hand or foot into the SUNUV SUN8 lamp. Select the appropriate timer setting (e.g., 30s) or use the auto-sensor. Cure until dry.
3. **Color Application:** Apply a thin layer of your chosen color gel polish.
4. **Cure Color:** Place your hand or foot into the lamp and cure the color layer. Repeat this step for additional color layers as desired, curing each layer.
5. **Top Coat & Shine:** Apply a thin layer of top coat. Cure under the lamp (e.g., 60s). After curing, wipe the nails with a cleanser or alcohol wipe to remove any sticky residue and enhance shine.

FAST & EASY IN 4 Steps



Figure 7: A visual guide to the four basic steps of gel nail application: Prep, Cure, Color, and Shine, illustrating the use of the SUNUV SUN8 lamp in the curing process.

5. MAINTENANCE AND CARE

Proper maintenance ensures the longevity and optimal performance of your SUNUV SUN8 UV LED Nail Lamp.

- **Cleaning:** Disconnect the power adapter before cleaning. Use a soft, dry cloth to wipe the exterior of the lamp. For stubborn stains, a slightly damp cloth with mild soap can be used, ensuring no liquid enters the lamp's interior. Do not use abrasive cleaners or solvents.
- **Storage:** Store the lamp in a cool, dry place away from direct sunlight and extreme temperatures when not in use. Keep it away from dust and moisture.
- **LED Beads:** The LED beads are designed for long life and typically do not require replacement. Avoid touching the LED beads directly.

6. SAFETY INFORMATION AND PRECAUTIONS

To ensure safe operation and prevent injury or damage, please adhere to the following safety guidelines:

- **Eye Protection: Prevent direct exposure of ultraviolet lights to the eyes.** Prolonged direct exposure to UV/LED light can be harmful. It is recommended to avoid looking directly at the light source during operation.
- **Ventilation:** Ensure adequate ventilation in the area where the lamp is used.
- **Power Supply:** Use only the provided original power adapter. Do not use the lamp if the power cord or adapter is damaged.
- **Water and Moisture:** Do not use the lamp near water or in damp environments. Do not immerse the lamp in water or any other liquid.
- **Children:** Keep the device out of reach of children. This is not a toy.
- **Professional Use:** While suitable for home use, professional users should adhere to all salon safety standards.
- **Disassembly:** Do not attempt to disassemble or repair the lamp yourself. Contact customer support for assistance.

7. TROUBLESHOOTING

If you encounter issues with your SUNUV SUN8 UV LED Nail Lamp, please refer to the following common troubleshooting steps:

Problem	Possible Cause	Solution
Lamp does not turn on.	Not plugged in correctly; Power outlet issue; Damaged adapter/cord.	Ensure the power adapter is securely plugged into both the lamp and a working electrical outlet. Try a different outlet. Inspect the adapter and cord for visible damage. If damaged, discontinue use and contact support.
Gel polish is not curing properly.	Incorrect curing time; Too thick gel layer; Expired gel polish; Insufficient power.	Ensure you are using the correct timer setting for your gel polish type (refer to gel polish instructions). Apply thinner layers of gel. Check the expiration date of your gel polish. Ensure the lamp is receiving stable power.
Smart sensor not working.	Obstruction of sensor; Hand not fully inserted.	Ensure nothing is blocking the sensor area inside the lamp. Make sure your hand is fully inserted into the lamp, covering the sensor area.
LCD display is blank or flickering.	Power supply issue; Internal malfunction.	Unplug the lamp, wait 30 seconds, and plug it back in. Try a different power outlet. If the issue persists, contact customer support.

If the problem persists after attempting these solutions, please contact SUNUV customer support for further assistance.

8. SPECIFICATIONS

Feature	Detail
Model Number	SUN8
Brand	SUNUV
Dimensions (L x W x H)	8.9 x 5.4 x 3.3 inches (22.5 x 13.8 x 8.5 cm)
Weight	Approximately 14.89 ounces (422 grams)
Light Source	Hybrid UV + LED Light Beads
Number of LED Beads	21
Maximum Power Output	48W (as indicated in A+ content)
Timer Settings	30s, 60s, 99s (Low Heat Mode)
Sensor Type	Smart Infrared Sensor
Display	LCD Digital Display
Material	Acrylic (Base Material)

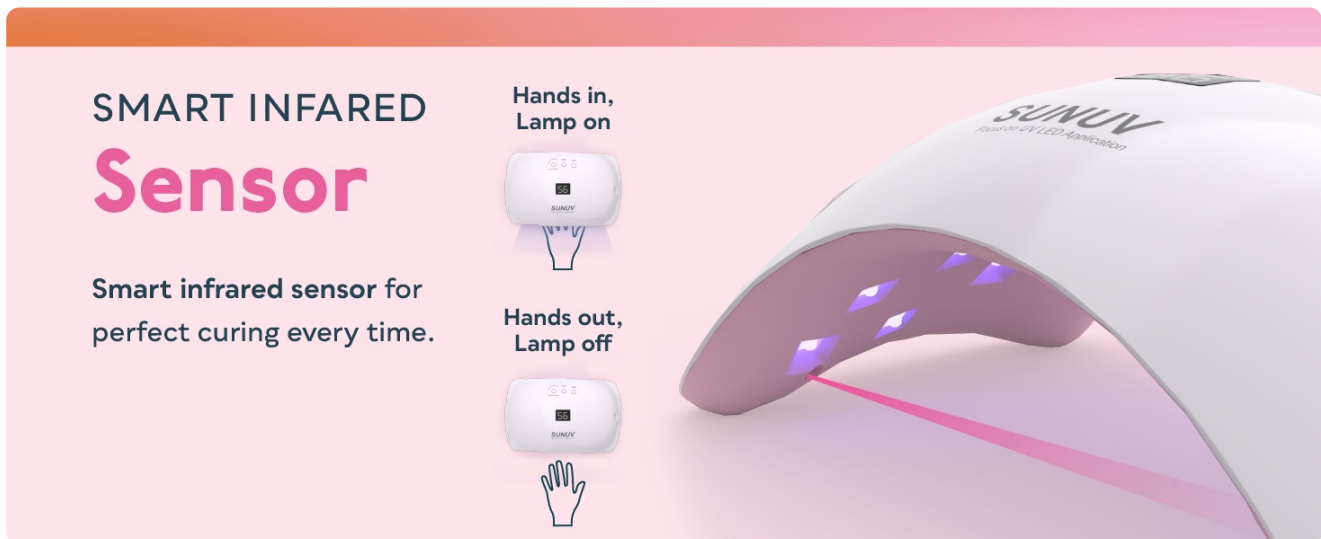


Figure 8: Internal view of the SUNUV SUN8 lamp showcasing its 21 hybrid UV+LED light beads (365nm UV and 405nm LED) and indicating a 48W power output for efficient curing.

9. WARRANTY AND CUSTOMER SUPPORT

SUNUV stands behind the quality of its products. Your SUNUV SUN8 UV LED Nail Lamp comes with a comprehensive warranty and dedicated customer support.

9.1. Warranty Information

The product includes a **worry-free 12-month warranty** for quality-related problems. This warranty covers manufacturing defects and malfunctions under normal use. Please retain your proof of purchase for warranty claims.

9.2. Lifetime Maintenance

In addition to the warranty, SUNUV offers lifetime maintenance support for your product. For any issues or inquiries beyond the warranty period, please contact our customer service team.

9.3. Contacting Support

For technical assistance, warranty claims, or any other inquiries, please visit the official SUNUV website or refer to the contact information provided in your product packaging. You can also reach out to the seller through the platform where you purchased the product.