

Amazon Basics 88b1050f-1d0d-44fb-81a3-52970ae4488e

Amazon Basics Controller Battery Pack Charger for Xbox One S Console

Model: 88b1050f-1d0d-44fb-81a3-52970ae4488e

1. INTRODUCTION

This manual provides instructions for the proper setup, operation, and maintenance of your Amazon Basics Controller Battery Pack Charger for Xbox One S Console. Please read this manual thoroughly before use to ensure optimal performance and safety.

2. PRODUCT OVERVIEW

The Amazon Basics Controller Battery Pack Charger is designed to provide a convenient and efficient charging solution for your Xbox One S wireless controllers. It includes a charging dock that connects directly to your console and two rechargeable battery packs.

2.1 Package Contents

- 1 x Amazon Basics Controller Battery Pack Charger
- 2 x Rechargeable Battery Packs
- 1 x User Manual (this document)

2.2 Product Features

- Integrated design for Xbox One S console.
- Dual charging slots for two battery packs.
- LED indicators for charging status.
- Pass-through USB port for continued console functionality.



Image: The Amazon Basics Controller Battery Pack Charger with its two included rechargeable battery packs.

3. SETUP INSTRUCTIONS

1. **Connect the Charger to the Console:** Locate an available USB port on your Xbox One S console. Insert the charger's integrated USB connector into the console's USB port. The charger is designed to fit snugly on the side of the console.

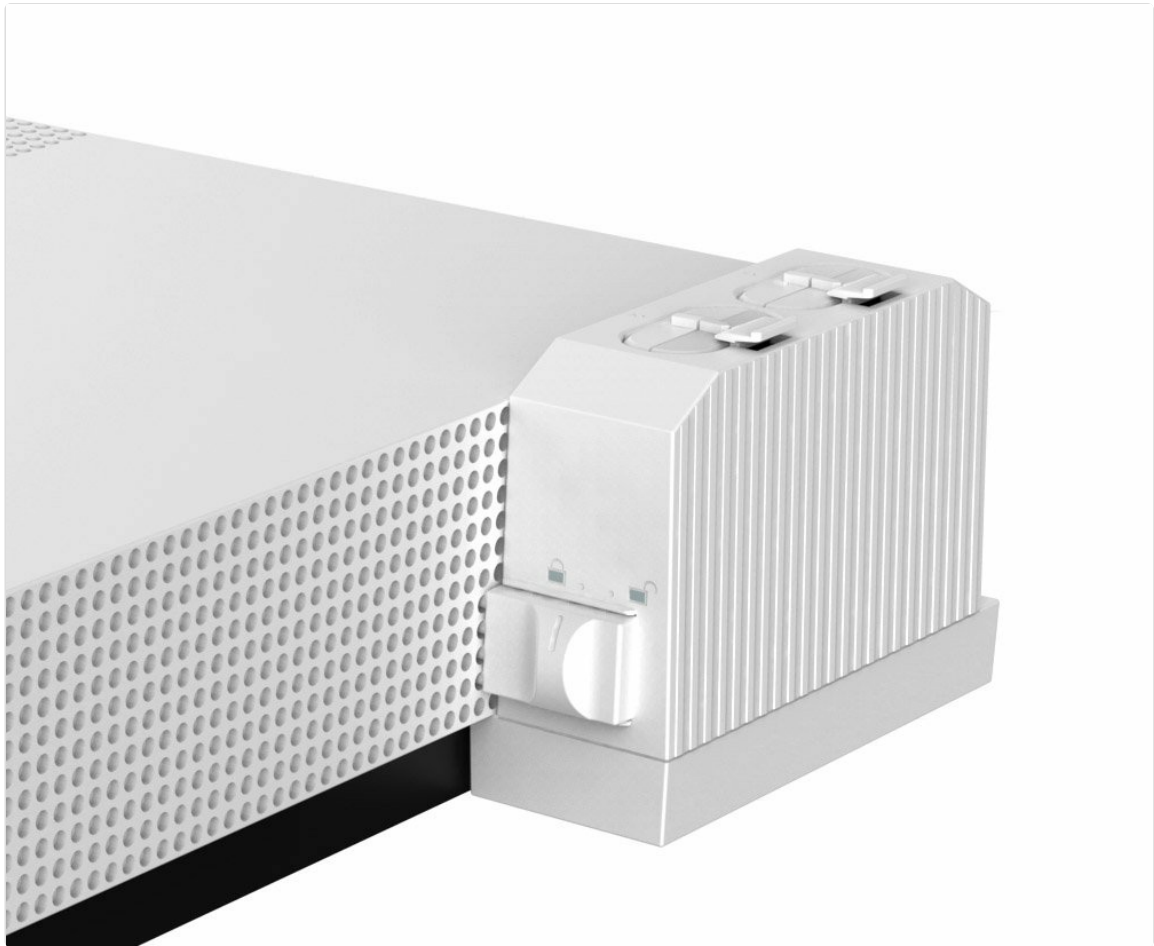


Image: The charging dock securely attached to the side of an Xbox One S console, utilizing a USB port.

2. **Install Battery Packs into Controllers:** Open the battery compartment on your Xbox One S wireless controller. Insert an Amazon Basics rechargeable battery pack, ensuring the contacts align correctly. Close the battery compartment cover.

Note: The battery packs are designed for a snug fit. Ensure proper alignment and gentle pressure when installing or removing to avoid damage.



Image: Two Amazon Basics rechargeable battery packs, ready for insertion into a controller or charger.

4. OPERATING INSTRUCTIONS

4.1 Charging Battery Packs

1. Ensure the charger is properly connected to your Xbox One S console.
2. Insert the rechargeable battery packs into the charging slots on the top of the charger. Ensure they are seated correctly.



Image: A rechargeable battery pack being placed into one of the charging slots on the dock.

3. The LED indicators on the front of the charger will illuminate to show the charging status:
 - **Red LED:** Battery is charging.
 - **Green LED:** Battery is fully charged.



Image: The charging dock attached to the console, displaying its LED indicators for charging status.

4. Once fully charged, remove the battery packs from the charger.

4.2 Using the Pass-Through USB Port

The charger features a pass-through USB port on its front, allowing you to connect other USB devices to your console without losing a port. This port functions as a standard USB 3.0 port.



Image: The charging dock highlighting its integrated pass-through USB port for additional connectivity.

5. MAINTENANCE

- **Cleaning:** Disconnect the charger from the console before cleaning. Use a soft, dry cloth to wipe the surface of the charger and battery packs. Do not use liquid cleaners or abrasive materials.
- **Storage:** When not in use for extended periods, store the charger and battery packs in a cool, dry place away from direct sunlight and extreme temperatures.

6. TROUBLESHOOTING

Problem	Possible Cause	Solution
Batteries not charging (Red LED not on)	<ul style="list-style-type: none">◦ Charger not properly connected to console.◦ Battery pack not seated correctly in charger.◦ Console is off or in a low-power state.	<ul style="list-style-type: none">◦ Ensure the charger's USB connector is fully inserted into the console's USB port.◦ Remove and re-insert the battery pack, ensuring it clicks into place.◦ Turn on the Xbox One S console or ensure it is in a power mode that allows USB charging.
Battery pack does not fit controller	<ul style="list-style-type: none">◦ Incorrect orientation.◦ Controller model incompatibility.	<ul style="list-style-type: none">◦ Ensure the battery pack is inserted with the correct orientation, aligning the contacts.◦ This charger and battery packs are specifically designed for Xbox One S controllers. Verify your controller model.

Problem	Possible Cause	Solution
Pass-through USB port not working	<ul style="list-style-type: none">◦ Device incompatibility.◦ Charger not receiving power.	<ul style="list-style-type: none">◦ Ensure the connected device is compatible with standard USB 3.0 ports.◦ Verify the charger is securely connected to the console and the console is powered on.

7. SPECIFICATIONS

- **Model Number:** 88b1050f-1d0d-44fb-81a3-52970ae4488e
- **Compatibility:** Xbox One S Wireless Controllers
- **Input:** USB (from Xbox One S console)
- **Output:** Dual charging slots, 1x USB 3.0 pass-through port
- **Battery Type:** Rechargeable NiMH (specific capacity not provided in source, general type)
- **Date First Available:** June 19, 2017
- **Manufacturer:** Amazon Basics

8. SAFETY INFORMATION

- Do not disassemble, modify, or attempt to repair the device.
- Keep the charger and battery packs away from water, moisture, and extreme temperatures.
- Avoid dropping or subjecting the device to strong impacts.
- Do not short-circuit the battery terminals.
- Dispose of used batteries according to local regulations.
- This product is intended for indoor use only.

9. WARRANTY AND SUPPORT

For warranty information and customer support, please refer to the Amazon Basics official website or contact Amazon customer service directly. Keep your purchase receipt for warranty claims.