

[Manuals.plus](#) /

> [eLEDing](#) /

> eLEDing EE800WF Series 10W Solar Powered LED Wall Light Instruction Manual

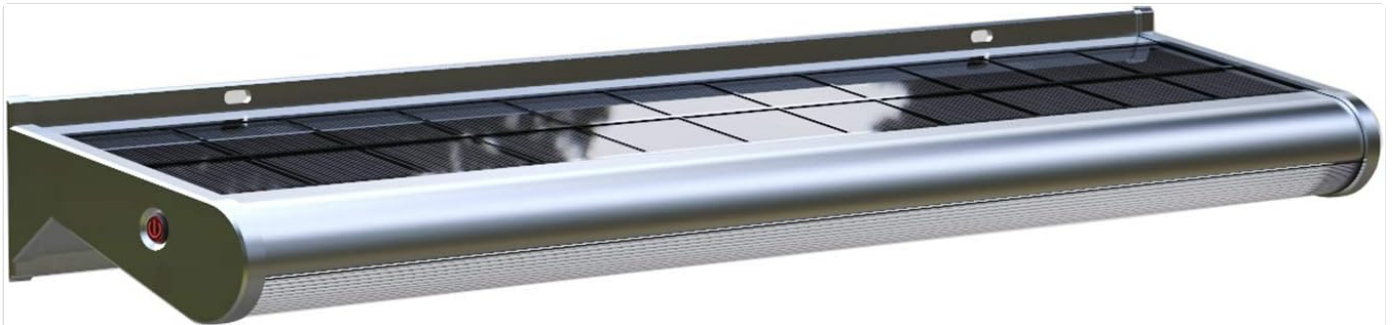
## eLEDing EE800WF

# eLEDing EE800WF Series 10W Solar Powered LED Wall Light Instruction Manual

Model: EE800WF | Brand: eLEDing

## 1. PRODUCT OVERVIEW

The eLEDing EE800WF Series 10W Solar Powered LED Wall Light is designed for outdoor illumination, providing continuous dusk-to-dawn lighting for various applications such as billboards, signs, patios, and building exteriors. It features a high-grade lithium battery for extended life and a tempered glass solar panel for efficient charging.



*Image: Front view of the eLEDing EE800WF Series 10W Solar Powered LED Wall Light.*

### Key Features:

- Continuous dusk-to-dawn illumination.
- High-grade Lithium Battery with extended life cycle.
- 10W tempered solar panel for efficient charging.
- Dusk-to-dawn lighting profile: 5 hours full brightness, then dims to 25%.
- Operating temperature range: -13°F (-25°C) to +113°F (+45°C).
- IP65 Waterproof rating.



Image: Diagram showing the solar panel, LED panel, ON/OFF button, and DC AUX Input Port.

## 2. PACKAGE CONTENTS

Please ensure all items are present before beginning installation:

- eLEDing EE800WF Series 10W Solar Powered LED Wall Light
- Mounting Hardware

## 3. SPECIFICATIONS

Feature	Specification
Brand	eLEDing
Model Name	EE800WF
Part Number	EE810W2F
Size	10W
Color	Gray
Material	Aluminum
Product Dimensions	23.6"L x 4.5"W x 2.6"H
Item Weight	4 Pounds
Power Source	Solar Powered
Light Source Type	LED
Number of Light Sources	48
Wattage	10 Watts
Brightness	1200 Lumen
Efficiency	120 lumens per watt
Water Resistance Level	IP65 Waterproof

Feature	Specification
Installation Type	Wall Mount
Batteries	1 Lithium Ion batteries required (included)

## 4. SETUP & INSTALLATION

Follow these steps to properly install your eLEDing solar light. For a visual guide, please refer to the installation video below.

Your browser does not support the video tag.

*Video: Detailed installation instructions for the eLEDing EE800WF Series Solar LED Light.*

### Installation Steps:

- 1. Mark Mounting Holes:** Hold the light fixture against the desired mounting surface. Use a marker to mark the locations for the mounting holes. There is one center hole and two top holes.
- 2. Install Center Screw:**
  - For wood or metal surfaces, drive a screw directly into the marked center hole, leaving a small gap for hanging.
  - For concrete or stone surfaces, pre-drill a hole and insert a screw anchor before driving the center screw.

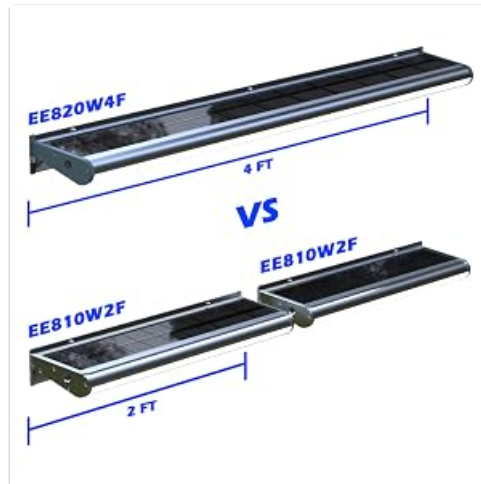


*Image: Side view of the light fixture, highlighting the mounting holes for installation.*

- 3. Mount the Light Fixture:** Hang the light unit onto the installed center screw. Once securely hanging, install the two remaining screws into the top marked holes to fully secure the fixture to the surface.
- 4. Activate and Test:** Locate the ON/OFF button on one end of the light fixture. Press the button to turn the light on. The

light will illuminate briefly in a bright area and then turn off. To simulate nighttime and test the light, cover the solar panel completely. The light should then turn on.

5. **Optional Auxiliary Solar Panel (Sold Separately):** If the built-in solar panel is in a shaded area or faces a direction that does not receive sufficient direct sunlight, an auxiliary solar panel can be connected for enhanced charging. Simply plug the auxiliary panel into the DC AUX Input Port on the light fixture. Mount the auxiliary solar panel in a location that receives optimal direct sunlight.



*Image: The eLEDing solar light shown with an optional auxiliary solar panel and connecting cable.*

## 5. OPERATING INSTRUCTIONS

---

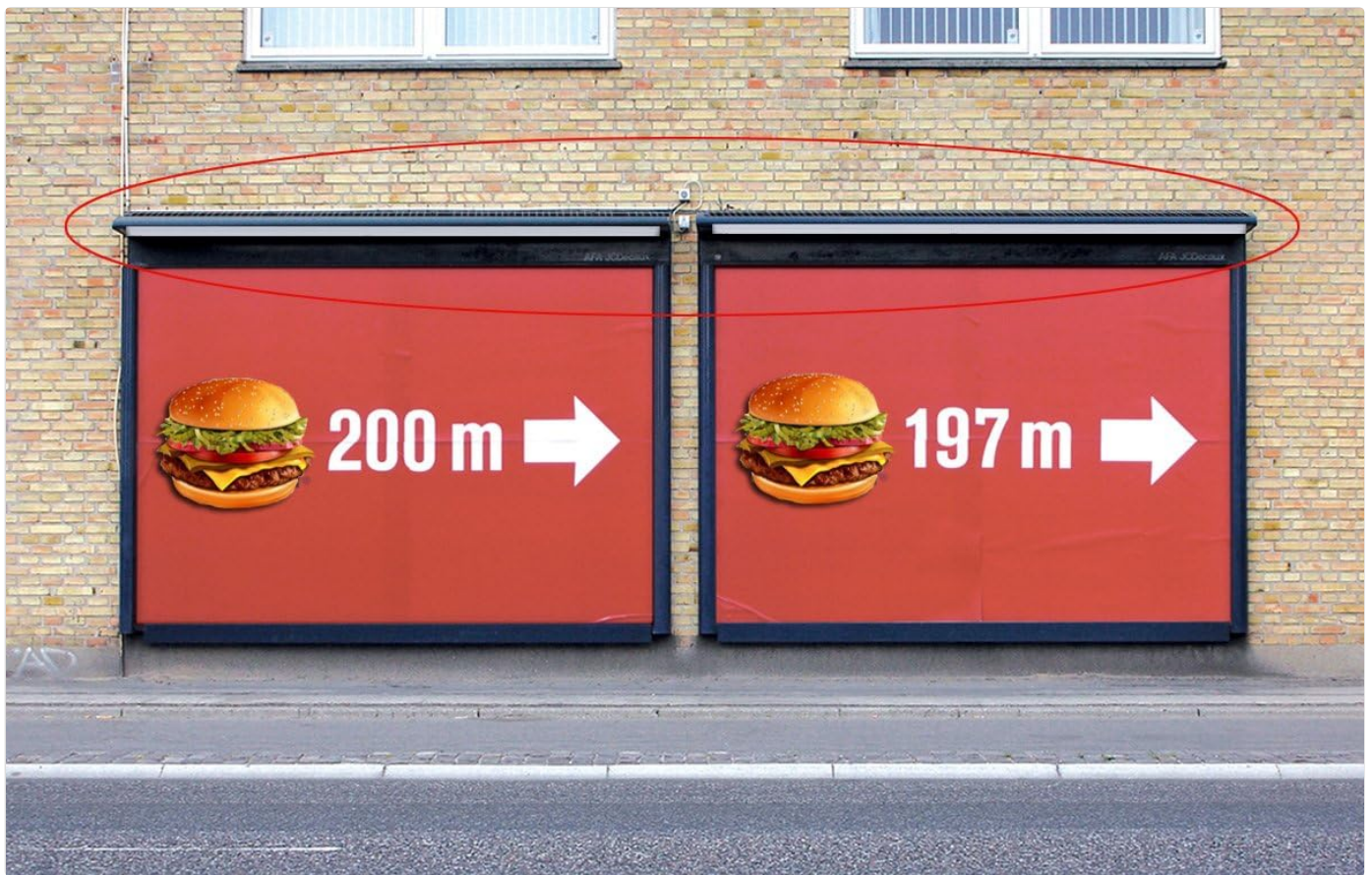
The eLEDing EE800WF Series Solar Powered LED Wall Light operates automatically from dusk till dawn, providing reliable illumination without manual intervention.

### Automatic Operation:

- The light features a smart mode that detects ambient light levels. At dusk, it will automatically turn on.
- The illumination profile is designed for efficiency: the light will operate at full brightness for the first 5 hours after activation at dusk.
- After the initial 5 hours, the brightness will automatically dim to 25% of its maximum output for the remainder of the night, until dawn.
- At dawn, the light will automatically turn off and begin recharging its internal battery via the solar panel.

### Manual Activation:

To manually activate or deactivate the light, press the ON/OFF button located on one end of the fixture.



*Image: The eLEDing solar light effectively illuminating an outdoor sign at night.*

## 6. MAINTENANCE

---

To ensure optimal performance and longevity of your eLEDing solar light, regular maintenance is recommended.

### Solar Panel Care:

- Keep the solar panel clean and free from dust, dirt, leaves, snow, or any other obstructions. A clean solar panel ensures maximum sunlight absorption for efficient battery charging.
- Periodically wipe the solar panel with a soft, damp cloth. Avoid using abrasive cleaners or harsh chemicals.
- Ensure the solar panel is not shaded by trees, buildings, or other structures throughout the day. Consistent direct sunlight is crucial for proper operation.



Image: A solar panel with leaves on it, illustrating the importance of keeping the panel clear of obstructions for optimal charging.

## 7. TROUBLESHOOTING

If your eLEDing solar light is not functioning as expected, please refer to the following common troubleshooting steps:

- **Light does not turn on at night:**
  - Ensure the ON/OFF button has been pressed to activate the light.
  - Verify that the solar panel is receiving at least 6-8 hours of direct sunlight daily.
  - Check if the solar panel is clean and free from any obstructions (e.g., dirt, leaves, snow) that might block sunlight.
  - Allow the light to charge for a full sunny day before its first use.
- **Light stays on for a short period only:**
  - The battery may not be fully charged. Ensure the solar panel receives adequate direct sunlight.
  - Check for partial shading on the solar panel during the day.
  - Extreme cold weather can affect battery performance and reduce illumination time.
- **Light appears dim:**
  - Ensure the solar panel is clean.
  - Verify the light has had sufficient time to charge.
  - The light operates at 25% brightness after the initial 5 hours. This is normal operation.

## 8. WARRANTY & SUPPORT

For warranty information or technical support regarding your eLEDing EE800WF Series Solar Powered LED Wall Light, please contact the manufacturer, E E Systems Group, Inc., directly. Refer to your product packaging or the official eLEDing website for the most current contact details and warranty terms.

You can visit the eLEDing Store for more information: [eLEDing Store on Amazon](#)

