



Manuals.plus /

› WOWOTO /

› WOWOTO H8 DLP LED Video Projector User Manual

## WOWOTO H8

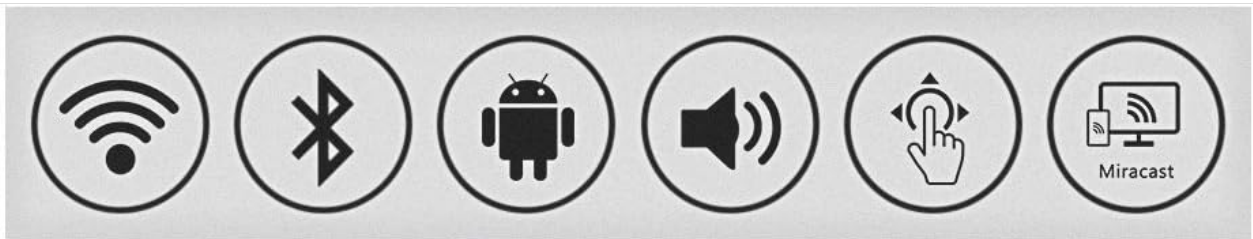
# WOWOTO H8 DLP LED Video Projector User Manual

Model: H8

## 1. INTRODUCTION

---

The WOWOTO H8 is a compact and versatile DLP LED video projector designed for both entertainment and business applications. Featuring a native resolution of 1280x800, support for 1080P input, and an Android operating system, it offers a rich visual experience with multi-screen sharing capabilities and various connectivity options. This manual provides essential information for setting up, operating, and maintaining your projector.



*Image 1.1: The WOWOTO H8 projector highlighting its key features like WiFi, Bluetooth, Android OS, audio, touch control, and Miracast support.*

## 2. PACKAGE CONTENTS

Please check the box for the following items:

- 1 x WOWOTO H8 Projector
- 1 x Remote Control (AAA batteries not included)
- 1 x Power Adapter
- 1 x AC Cable
- 1 x HDMI Cable
- 1 x 3-in-1 AV Cable
- 1 x Quick User Manual

**Note: AAA batteries for the remote control are not included due to shipping regulations. Please purchase them separately.**



REMOTE



ADAPTER



AC CABLE



HDMI CABLE



AV CABLE



USER MANUAL



OTHERS SIDE AIR OUT:(



WOWOTO FRONT AIR OUT:)

Image 2.1: All items included in the WOWOTO H8 projector package.

### 3. SPECIFICATIONS

The WOWOTO H8 projector offers the following technical specifications:

Feature	Specification
Contrast Ratio	2000:1

Feature	Specification
Native Resolution	1280 x 800 (supports 1080p and 3D input)
Light Source	RGB LED
Brightness	2000 Lumens
Lamp Life	20,000 Hours (DLP/LED)
Throw Ratio	1.2:1
Projection Size	20 to 300 inches
Best Projection Distance	2m to 3m
Aspect Ratio	16:10 / 16:9 / 4:3
Operating System	Android 4.4
Internal Storage (ROM)	8 GB
RAM	1 GB
USB Format Support	FAT16/FAT32 (read/write), NTFS (read-only)
Max USB Storage	32 GB
WLAN	802.11 a/b/g/n (2.4G+5G dual band, 2T3R 300M)
Bluetooth	BT4.0 (for BT speakers, mouse, keyboard)
Wireless Sharing	Airplay/Miracast/DLNA/Ushare
Keystone Correction	±40° AUTO/Manual
Digital Zoom	±50% (adjusts screen size without moving projector)
Projection Mode	Front/Rear/Ceiling (automatic/manual)
Input Ports	HDMI/AV/USB2.0*1/USB3.0*1/Micro SD/RJ45
Output Port	1 x 3.5mm Audio Jack
Power Consumption	26W (Eco mode 16W)
Speaker	2.2W x 1 (ideal for indoor use)
Noise Level	22-28dB (ultra quiet)
Built-in Battery	No
Touch Panel	Yes
Weight	0.5 kg (1.1 lbs)

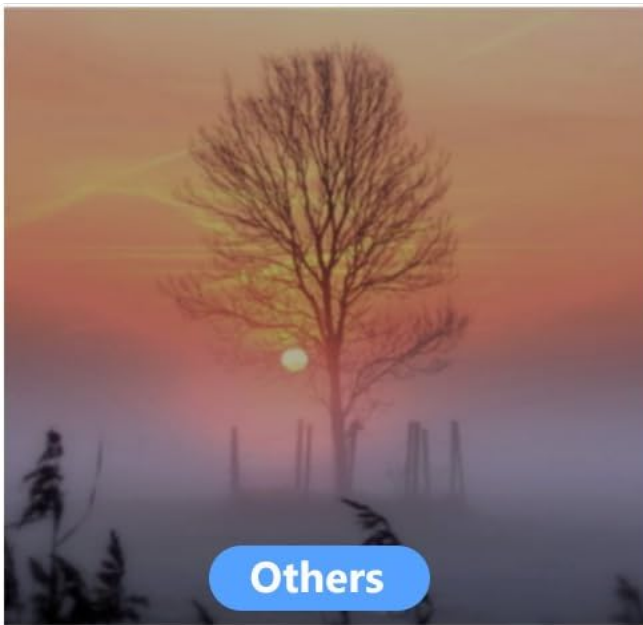
Feature	Specification
Dimensions (L x W x H)	15.24 x 11.99 x 3.1 cm



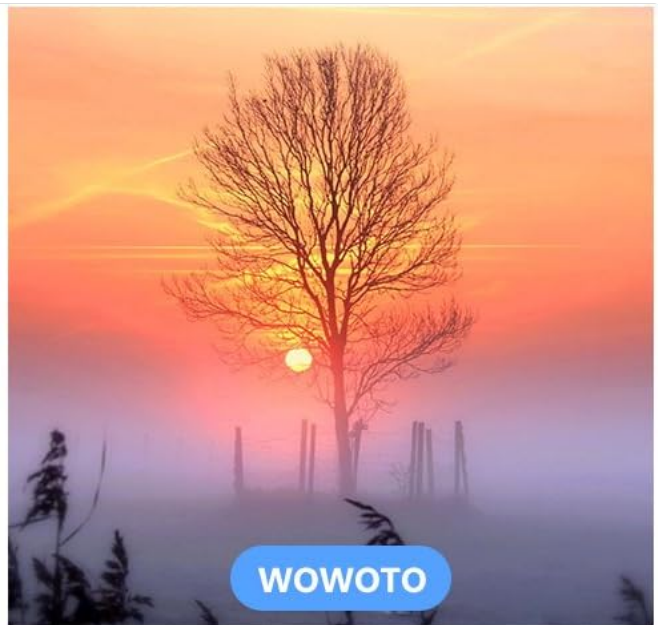
**DLP/LED/20,000Hrs**



*Image 3.1: Visual representation of the projector's resolution and long-lasting DLP LED light source.*



Others



WOWOTO

65% Brighter Than Other Ordinary Projector



Work best  
at night!

Image 3.2: The WOWOTO H8 offers enhanced brightness, performing optimally in darker environments.

## 4. SETUP

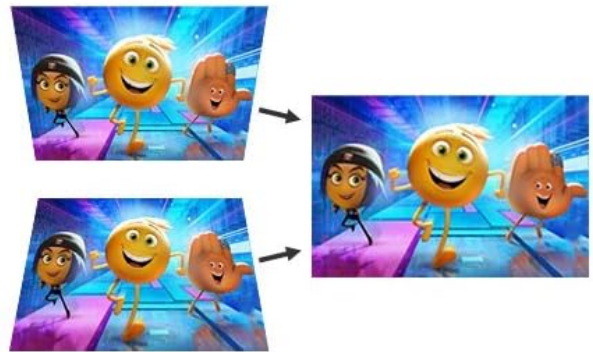
### 4.1 Physical Setup

1. **Placement:** Position the projector on a stable, flat surface or mount it on a ceiling. Ensure there is adequate ventilation around the device.
2. **Screen Distance:** For optimal image quality, place the projector between 2 to 3 meters from the projection surface. The projection size can range from 20 to 300 inches depending on the distance.
3. **Power Connection:** Connect the power adapter to the projector's DC IN port and then plug the AC cable into a power outlet.

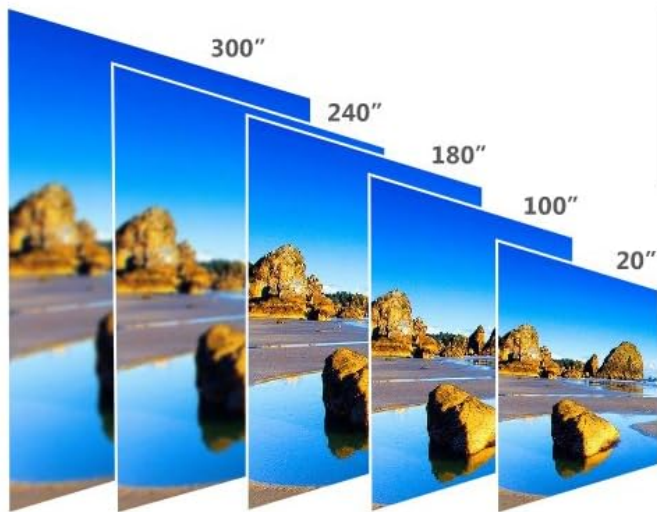
Impressive 3D



± 40° AUTO  
keystone correction



Projection Mode: Front / Rear / Ceiling



The Best Projection Distance

2-3m



8000mm 6000mm 4500mm 2500mm 500mm

Image 4.1: The projector supports various projection modes (Front, Rear, Ceiling) and illustrates recommended projection distances for different screen sizes.

## 4.2 Initial Power On

Press the power button on the projector or the remote control to turn on the device. The projector will boot into the Android operating system interface.

## 5. OPERATING INSTRUCTIONS

### 5.1 User Interface Navigation

The WOWOTO H8 features an intuitive Android interface. You can navigate using the touch control panel on the top of the projector or the included remote control. For enhanced control, you can connect a wired or wireless mouse via the USB port or Bluetooth.



## WOWOTO Smart Projector

Android/8G/Mstar/WIFI/Bluetooth/Speaker/Touch Control



Image 5.1: The Android home screen displaying various applications and settings for easy access.

### 5.2 Connectivity Options

The projector offers a wide range of input and output ports:

- **HDMI/MHL:** Connect to laptops, Blu-ray players, game consoles, or other HDMI-enabled devices.
- **USB 2.0 / USB 3.0:** Connect USB drives (up to 32GB, FAT16/FAT32 read/write, NTFS read-only), external keyboards, or mice.
- **Micro SD:** Insert a Micro SD card for media playback.
- **AV:** Connect older devices using the included 3-in-1 AV cable.
- **RJ45 (Ethernet):** For a wired internet connection.
- **3.5mm Audio Jack:** Connect external speakers or headphones.
- **WiFi:** Connect to wireless networks (2.4G+5G dual band).
- **Bluetooth:** Pair with Bluetooth speakers, headphones, keyboards, or mice.



Image 5.2: Detailed view of the projector's various input and output ports.

### 5.3 Multi-screen Sharing

The WOWOTO H8 supports wireless multi-screen sharing from smartphones, tablets, and PCs using Airplay, Miracast, DLNA, and the proprietary Ushare app. This allows you to project content from your mobile devices onto a large screen (up to 180 inches).



Image 5.3: Illustrates how to share content wirelessly from your smart devices to the projector.

## 5.4 Keystone Correction and Digital Zoom

- **Keystone Correction:** The projector features automatic and manual  $\pm 40^\circ$  keystone correction to adjust for distorted images when the projector is not perfectly perpendicular to the screen.
- **Digital Zoom:** Use the digital zoom function ( $\pm 50\%$ ) to adjust the screen size without physically moving the projector.

## 5.5 App Installation and Usage

Running on Android 4.4, the projector allows you to download and install various applications from the Aptoide App Store, which hosts over 700,000 apps including Netflix, Hulu, Spotify, Pandora, Instagram, Facebook, Twitter, Flixster, and Kodi. This enables you to watch shows, play games, and browse online directly from the projector.

### Important Note on Copyrighted Content:

- The WOWOTO H8 can mirror user-generated content such as PPT, PDF, images, and videos. However, copyrighted content cannot be duplicated or mirrored directly from certain applications.

- For applications like Amazon Prime Video, you may need to use an external streaming device (e.g., Firestick) connected via HDMI to bypass content protection.

## 6. MAINTENANCE

---

Proper maintenance ensures the longevity and optimal performance of your projector:

- **Cleaning:** Regularly clean the projector lens with a soft, lint-free cloth. Use compressed air to clear dust from ventilation grilles. Do not use liquid cleaners directly on the lens or body.
- **Ventilation:** Ensure the projector's air vents are not blocked to prevent overheating. The H8 features front air out design for efficient heat dissipation.
- **Storage:** When not in use for extended periods, store the projector in a cool, dry place, protected from dust.
- **Lamp Life:** The DLP LED light source has a lifespan of approximately 20,000 hours, requiring no frequent lamp replacements.



REMOTE



ADAPTER



AC CABLE



HDMI CABLE



AV CABLE



USER MANUAL



OTHERS SIDE AIR OUT:(



WOWOTO FRONT AIR OUT:)

Image 6.1: The WOWOTO H8 features an optimized front air out design for better heat management compared to side air out systems.

## 7. TROUBLESHOOTING

If you encounter issues with your WOWOTO H8 projector, refer to the following common problems and solutions:

- **No Image Displayed:**

- Ensure the power cable is securely connected and the projector is turned on.
- Check the input source selection (HDMI, AV, USB, etc.) matches your connected device.

- Verify that the connected device (laptop, media player) is powered on and outputting a signal.
- **No Sound:**
  - Adjust the volume on both the projector and the connected source device.
  - Ensure external speakers (if connected) are powered on and properly connected to the 3.5mm audio jack or paired via Bluetooth.
  - Check audio settings on the source device.
- **Remote Control Not Working:**
  - Ensure AAA batteries are correctly inserted and not depleted. Replace if necessary.
  - Point the remote directly at the projector's IR receiver.
  - Remove any obstacles between the remote and the projector.
- **Wi-Fi Connection Issues:**
  - Ensure the Wi-Fi network is active and within range.
  - Verify the Wi-Fi password is entered correctly.
  - Restart the projector and your Wi-Fi router.
- **Image Blurry or Distorted:**
  - Adjust the focus ring on the projector lens until the image is clear.
  - Use the keystone correction feature to correct trapezoidal distortion.
  - Ensure the projection surface is flat and smooth.

## 8. SAFETY INFORMATION

---

Please read and follow these safety guidelines to prevent damage to the projector and ensure user safety:

- Do not look directly into the projector lens when the lamp is on, as the bright light can cause eye damage.
- Do not place the projector in direct sunlight, near heat sources, or in environments with high humidity or dust.
- Ensure proper ventilation to prevent overheating. Do not block the air vents.
- Use only the power adapter provided with the projector.
- Do not attempt to disassemble or repair the projector yourself. Refer all servicing to qualified personnel.
- Keep the projector away from water or other liquids.

## 9. WARRANTY AND SUPPORT

---

The WOWOTO H8 projector comes with a standard manufacturer's warranty. For specific warranty terms, duration, and to register your product, please refer to the warranty card included in your package or visit the official WOWOTO website. For technical support, troubleshooting assistance beyond this manual, or service inquiries, please contact WOWOTO customer support through their official channels.