



[Manuals.plus](#) /

> [LiCB](#) /

> LiCB CR2025 3V Lithium Battery User Manual

## LiCB CR2025

# LiCB CR2025 3V Lithium Battery User Manual

Model: CR2025 | Brand: LiCB

## 1. INTRODUCTION

---

The LiCB CR2025 3V Lithium Battery is a high-quality coin cell designed for various electronic devices requiring a compact and reliable power source. This manual provides essential information for the safe and effective use of these batteries.



Image 1: LiCB CR2025 3V Lithium Battery 10-Pack packaging. This image displays the blister packaging containing ten individual CR2025 lithium coin cell batteries.

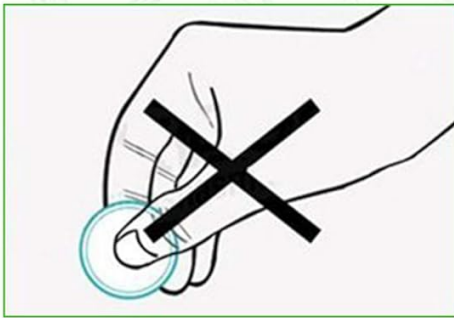
## 2. SAFETY INFORMATION

Please read and understand all safety warnings before using these batteries. Improper use can lead to leakage, overheating, explosion, or injury.

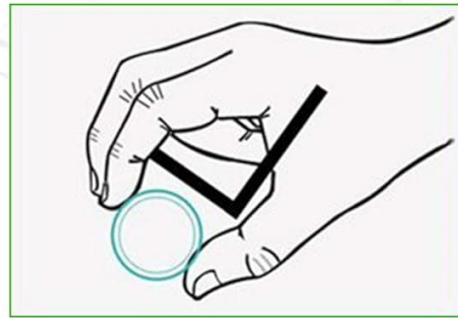
- **Keep away from children:** CR2025 coin cell batteries can be swallowed and cause serious injury or death. Store in a secure location out of reach of children.
- **Do not recharge:** These batteries are non-rechargeable. Attempting to recharge them may cause leakage or explosion.
- **Do not dispose of in fire:** Batteries may explode or leak if disposed of in fire.
- **Avoid short-circuiting:** Do not allow metal objects to contact both positive and negative terminals simultaneously. This can cause heat generation, leakage, or explosion.
- **Proper storage:** Store batteries in their original packaging until ready for use. Avoid storing loose batteries together to prevent short circuits.
- **Avoid direct contact with both terminals:** Human body is conductive. Touching both positive and negative terminals with fingers can cause power loss.

# CAUTIONS

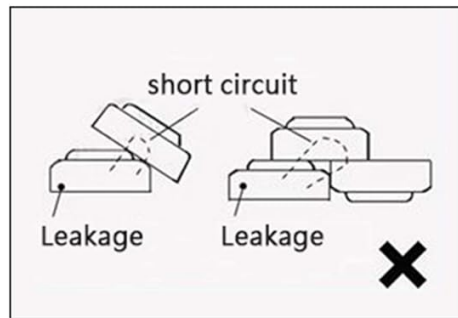
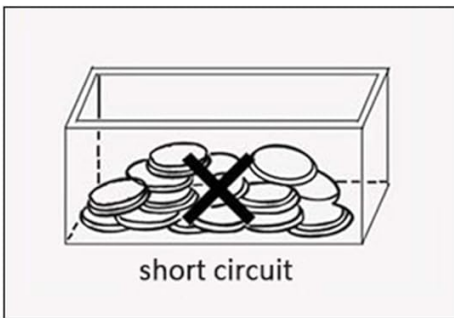
## Low Power



## Power Protection



Because human body is conductive, batteries will lose power if one finger is touching positive and another is on negative.



If batteries are not separately stored, it may cause short-circuit or explosion.

Image 2: Cautions for handling CR2025 batteries. This image shows visual warnings against touching both battery terminals simultaneously and improper storage that could lead to short circuits, leakage, or explosion.

## 3. SPECIFICATIONS

The following table details the technical specifications of the LiCB CR2025 battery:

Specification	Value
Brand	LiCB
Name	CR2025 Button Battery
Type	CR2025
Size	20mm * 2.5mm
Voltage	3V
Weight	2.4g

Chemical System	Lithium Manganese Dioxide
Lifetime of Battery	3 years (shelf life)
Capacity	150 mAh
Mercury Free	Yes

# Battery Parameters



Brand: LiCB
Name: CR2025 Button Battery
Type: CR2025
Size: 20mm*2.5mm
Voltage: 3V
Weight: 2.4g
Specifications: 10 PCS CR2025
Chemical System: lithium manganese oxide
Lifetime of Battery: 3 years
Capacity: 150mAh

Image 3: Detailed battery parameters for the LiCB CR2025. This image provides a clear table of specifications including brand, type, size, voltage, weight, chemical system, lifetime, and capacity.

## 4. SETUP AND INSTALLATION

LiCB CR2025 batteries are commonly used in small electronic devices such as remote controls, watches, calculators, electronic notebooks, and thermometers. The installation process typically involves:

- 1. Identify the battery compartment:** Locate the battery compartment on your device. This may require a small screwdriver or a prying tool.
- 2. Remove the old battery:** Carefully remove the depleted battery, noting its orientation (positive (+) side up or down).
- 3. Insert the new battery:** Place the new LiCB CR2025 battery into the compartment, ensuring the

correct polarity. The positive (+) side is usually marked on the battery and the device.

4. **Secure the compartment:** Close the battery compartment securely.

Always refer to your device's specific instruction manual for detailed battery replacement procedures.

## 5. OPERATING INSTRUCTIONS

Once installed correctly, the LiCB CR2025 battery will provide stable 3V power to your device. These batteries are designed for long-lasting performance and consistent voltage output throughout their operational life.

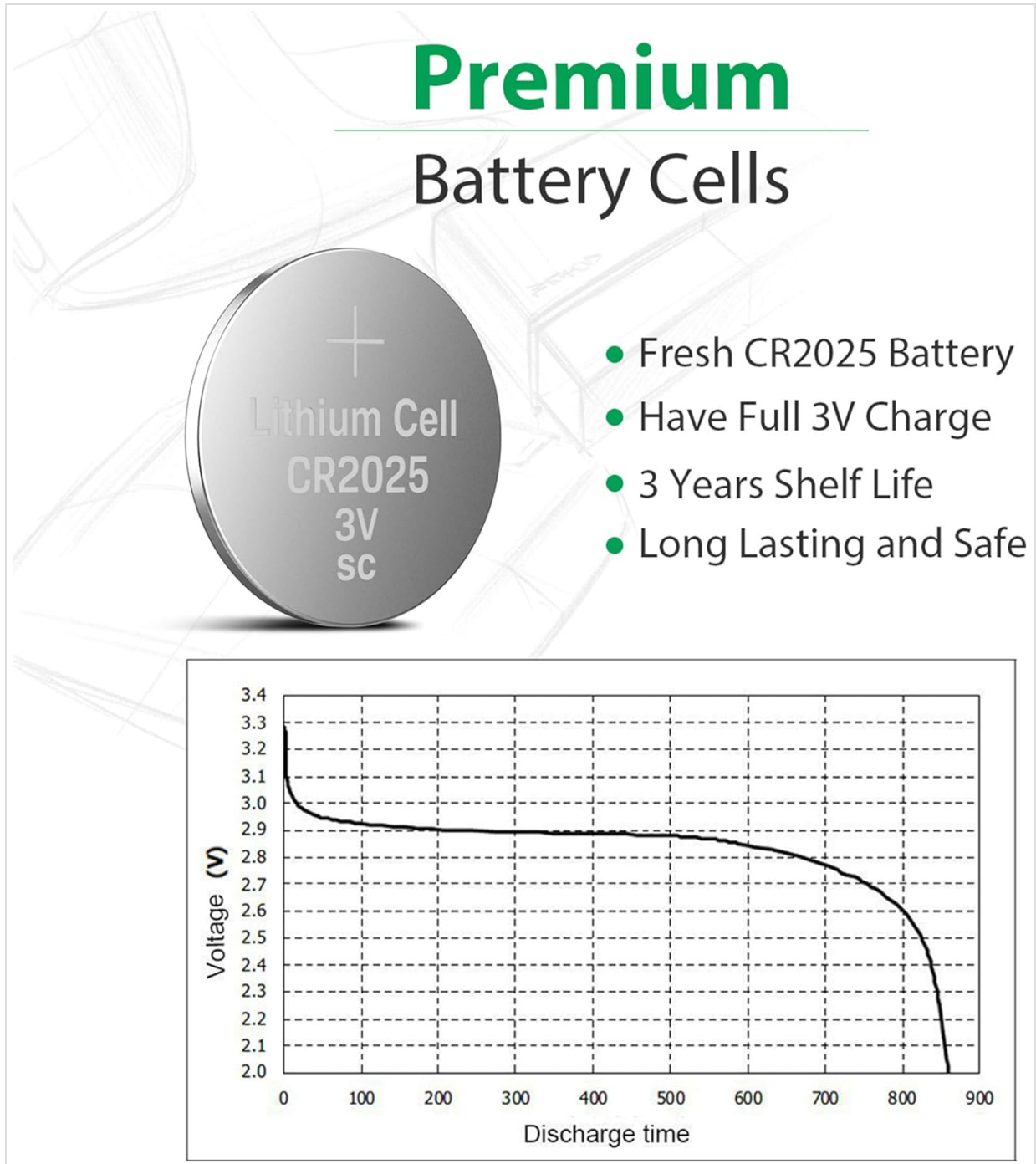


Image 4: Premium battery cells and discharge curve. This image highlights the fresh CR2025 battery, full 3V charge, 3 years shelf life, and long-lasting, safe performance, accompanied by a voltage discharge time graph.

## 6. MAINTENANCE AND STORAGE

- **Storage:** Store unused batteries in a cool, dry place at room temperature. Keep them in their original blister packaging to prevent accidental short-circuiting.
- **Handling:** Avoid touching the battery terminals with bare hands for extended periods, as this can affect battery life.
- **Disposal:** Dispose of used batteries according to local regulations. Do not throw them in household waste.



Image 5: Back of LiCB CR2025 battery packaging. This image displays the reverse side of the battery packaging, which includes important safety warnings and disposal instructions in various languages.

## 7. TROUBLESHOOTING

- **Device not powering on:**

- Ensure the battery is inserted with the correct polarity (+/-).
- Check if the battery compartment is clean and free of debris.
- Verify that the battery is fully seated and making proper contact.
- If the battery is old or has been stored improperly, it may have lost charge. Replace with a new battery.

- **Short battery life:**

- Ensure the device is not drawing excessive power.
- Check for any short circuits within the device or improper battery installation.
- Verify the battery's expiration date.

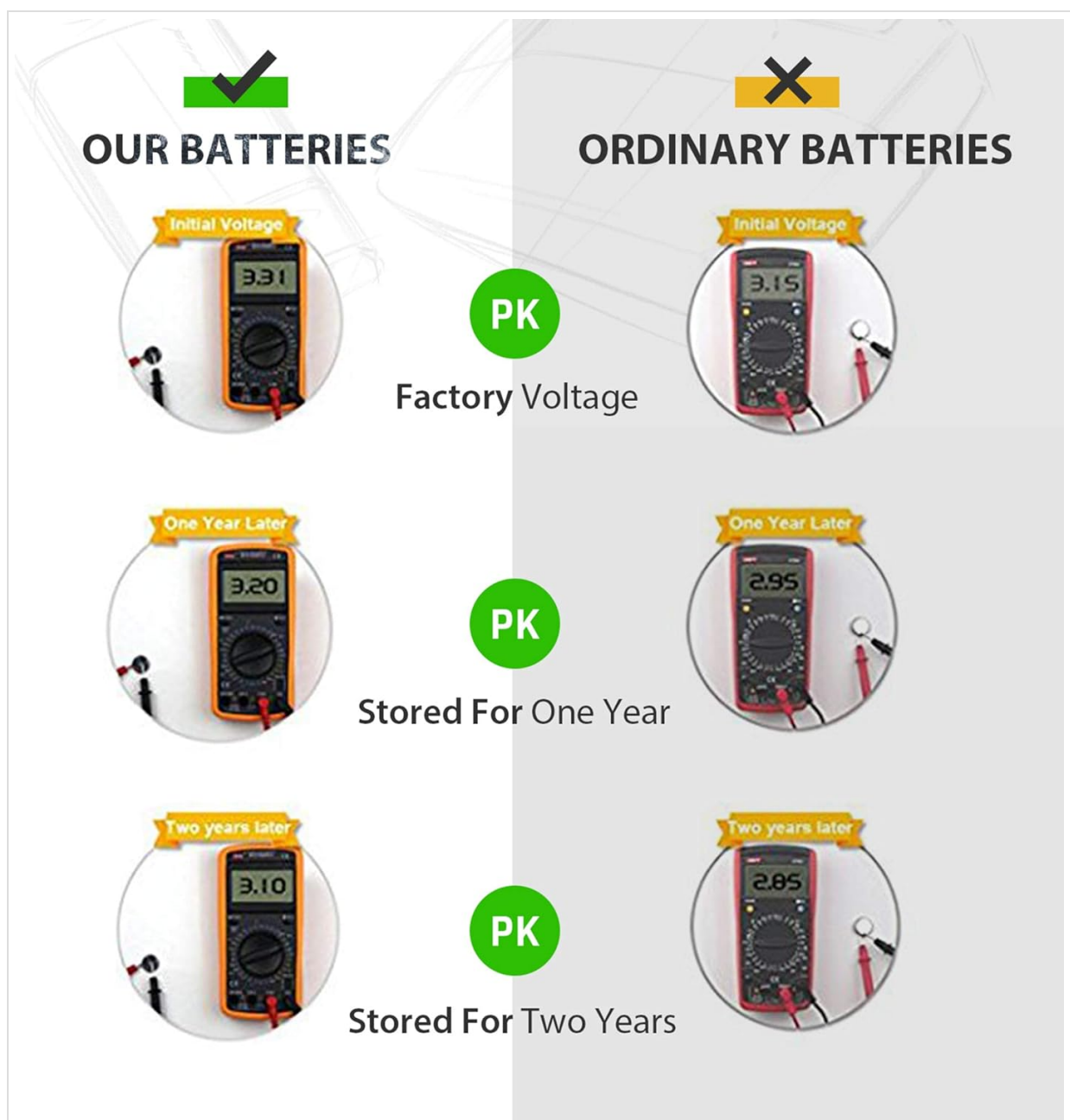


Image 6: Comparison of LiCB batteries vs. ordinary batteries. This image illustrates the superior voltage retention of LiCB batteries compared to standard batteries after one and two years of storage.

## 8. WARRANTY AND SUPPORT

---

LiCB CR2025 batteries come with an **18-month warranty**. For technical support or warranty claims, please contact LiCB customer service.

**Contact Information:**

- Email: [support@licb-battery.com](mailto:support@licb-battery.com)
- Website: [www.licb-battery.com](http://www.licb-battery.com)