

Signcomplex ZF120A-1202000-F

Signcomplex 12V 2A Power Supply Instruction Manual

Model: ZF120A-1202000-F

1. INTRODUCTION

This manual provides detailed instructions for the safe and efficient use of your Signcomplex 12V 2A Power Supply. This switching adapter is designed to convert AC household current to 12V DC, suitable for powering various low-voltage devices such as LED strip lights.

2. SAFETY INFORMATION

WARNING: To reduce the risk of electric shock, fire, or injury, read and follow all instructions carefully.

- Ensure the power supply is disconnected from the main power outlet before making any connections or disconnections.
- Do not expose the power supply to water, moisture, or extreme temperatures. It is designed for indoor, dry location use only (IP20 rated).
- Do not open the power supply casing. There are no user-serviceable parts inside.
- Verify that the voltage and current requirements of your device match the output specifications of this power supply (12V DC, 2A max). Exceeding the maximum wattage (24W) can damage the power supply and connected devices.
- Use only the provided power cord and connector.
- Keep out of reach of children.

3. PACKAGE CONTENTS

Verify that all items are present in your package:

- 1x Signcomplex 12V 2A Power Supply (AC/DC Adapter)
- 1x AC Power Cord (US Plug)
- 1x DC Screw Terminal Connector



Image 3.1: Contents of the Signcomplex 12V 2A Power Supply package, including the main adapter unit, AC power cord, and a green screw terminal connector.

4. PRODUCT OVERVIEW

The Signcomplex 12V 2A Power Supply is a compact and efficient switching adapter designed for various low-voltage applications. It features a standard US plug for AC input and a barrel connector for 12V DC output, along with a detachable screw terminal for flexible connections.

4.1 Components

- **Power Adapter Unit:** Converts AC input to 12V DC output. Features an LED indicator.
- **AC Input Port:** Connects to the AC power cord.
- **DC Output Cable with Barrel Connector:** Provides 12V DC power to your device.
- **DC Screw Terminal Connector:** Allows for direct wire connections to the DC output.



Image 4.1: The power supply unit with its AC input port highlighted, where the AC power cord connects.

DC Port Diameter : 5.5x2.1mm



Positive Polarity



Image 4.2: Diagram illustrating the DC port diameter (5.5x2.1mm) and positive polarity (center positive) for the output connector.

5. SETUP INSTRUCTIONS

Follow these steps to set up your Signcomplex 12V 2A Power Supply:

1. **Connect the AC Power Cord:** Insert the AC power cord into the input port of the power adapter unit. Ensure it is firmly seated.

2. **Prepare the DC Output Connection:**

- **For devices with a standard 5.5x2.1mm barrel jack:** Connect the power adapter's DC barrel connector directly to your device's input jack.
- **For devices requiring bare wire connection (e.g., LED strip lights):** Use the included DC screw terminal connector.

3. **Using the DC Screw Terminal Connector (if applicable):**

- a. Unscrew the terminal screws on the green connector using a small screwdriver.

- b. Carefully insert the positive (+) wire of your device into the terminal marked '+'. Ensure no stray wire strands are present.
- c. Tighten the screws to secure the wires.
- d. Connect the barrel end of the screw terminal connector to the DC output barrel connector of the power adapter.

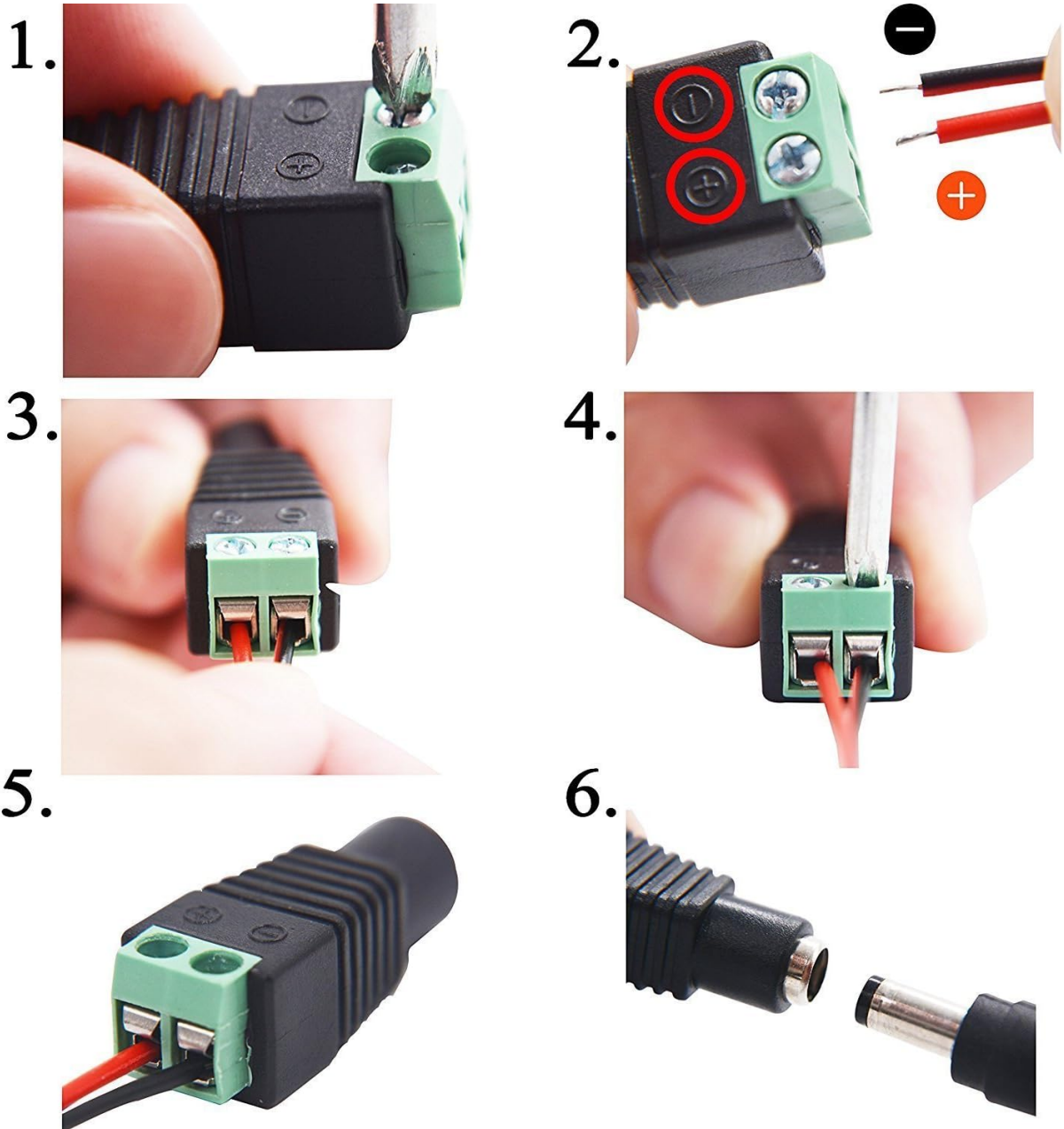


Image 5.1: Visual guide demonstrating the process of connecting bare wires to the DC screw terminal connector, ensuring correct polarity.



Image 5.2: A close-up view of the DC screw terminal connector properly attached to an LED strip, ready for connection to the power supply.

4. **Connect to Power Outlet:** Plug the AC power cord into a standard 100-240V AC wall outlet. The LED indicator on the power adapter should illuminate, indicating power is supplied.



Image 5.3: The power supply connected to an LED strip, showing the green LED indicator on the adapter unit, signifying active power output.

6. OPERATING INSTRUCTIONS

Once properly set up, the Signcomplex 12V 2A Power Supply operates automatically. It provides a stable 12V DC output to your connected device.

- Ensure the power supply is plugged into a live AC outlet.
- The green LED indicator on the adapter will light up when power is active.
- The power supply is designed for continuous operation within its specified limits.

Product use range



computer; laptop ; led strip light ; Light box; home appliances; WiFi Router; juicer machines; Coffee machine; humidifier; massager; Security Camera; Fingerprint machine; air purifier

Image 6.1: Examples of compatible devices for the 12V power supply, including LED strip lights, security cameras, and other low-voltage electronics.

7. MAINTENANCE

The Signcomplex 12V 2A Power Supply requires minimal maintenance.

- Keep the power supply clean and free from dust. Use a dry, soft cloth for cleaning.
- Do not use liquid cleaners or solvents.
- Ensure adequate ventilation around the power supply to prevent overheating. Do not cover it.
- Regularly check cables and connectors for any signs of damage. Replace if necessary.

8. TROUBLESHOOTING

If you encounter issues with your power supply, refer to the following common problems and solutions:

Problem	Possible Cause	Solution
---------	----------------	----------

Problem	Possible Cause	Solution
No power output / LED indicator off	<ul style="list-style-type: none"> Power outlet is not active. AC power cord is not properly connected. Faulty power supply or cable. 	<ul style="list-style-type: none"> Test the outlet with another device. Ensure all connections are secure. Contact customer support if the issue persists.
Device not receiving power	<ul style="list-style-type: none"> Incorrect DC connection or polarity. Device requires more than 2A (24W). Faulty device. 	<ul style="list-style-type: none"> Verify DC connector is fully inserted and polarity is correct (center positive). Check your device's power requirements. Do not exceed 2A/24W. Test the device with another compatible power source if available.
Power supply feels hot	<ul style="list-style-type: none"> Overload (device drawing too much current). Poor ventilation. 	<ul style="list-style-type: none"> Immediately disconnect the power supply. Verify your device's current draw does not exceed 2A. Ensure the power supply is in an open area with good airflow.

9. SPECIFICATIONS

Feature	Specification
Model Number	ZF120A-1202000-F
Input Voltage	AC 100-240V
Output Voltage	DC 12V
Output Current	2 Amps (Max)
Output Wattage	24 Watts (Max)
Connector Type	5.5x2.1mm Barrel Connector (Center Positive)
Certifications	CE, FCC, UL Listed
IP Rating	IP20 (Non-waterproof)
Dimensions	3.74 x 1.69 x 1.06 inches
Item Weight	7.4 ounces
Material	Plastic
Special Features	Shock and vibration resistant

10. WARRANTY AND SUPPORT

For warranty information or technical support, please refer to the retailer where the product was purchased or visit the official Signcomplex website. Keep your purchase receipt as proof of purchase.

For additional assistance, you may contact Signcomplex customer service through their official channels.