

Manuals+

[Q & A](#) | [Deep Search](#) | [Upload](#)

[manuals.plus](#) /

› [Luminus](#) /

› [Luminus LED PAR30 Flood Bulb User Manual](#)

Luminus PAR30

Luminus LED PAR30 Flood Bulb

USER MANUAL

1. Product Overview

The Luminus PAR LED lamps are designed for general and spot lighting applications, commonly used in recessed downlights, track lighting, and floodlights. These bulbs are suitable for both indoor and outdoor fixtures, offering versatility in lighting solutions. They are dimmable and available in various color temperatures to suit different environments and moods.



Image 1.1: A pack of six Luminus PAR30 LED flood bulbs, showcasing the product packaging and the bulbs themselves.

Key Features:

- **Energy Efficient:** 11W power consumption, equivalent to a 75W incandescent bulb.
- **High Brightness:** Delivers 1000 Lumens of light output.
- **Long Lifespan:** Rated for 25,000 hours, providing extended use.
- **Dimmable:** Compatible with most dimmers for adjustable light intensity.
- **Color Temperature:** 5000K Daylight for a bright, crisp illumination.
- **Beam Angle:** 40-Degree beam angle, suitable for general and spot lighting.
- **Energy Star Certified:** Ensures energy efficiency and quality.

2. Safety Information

Please read all safety instructions before installation and use. Failure to follow these instructions may result in electric shock, fire, or other hazards.


- **Electrical Safety:** Always turn off power at the circuit breaker before installing or replacing bulbs.
- **Indoor/Outdoor Use:** These bulbs are suitable for indoor and outdoor use, but must not be directly exposed to water. Ensure fixtures provide adequate protection from direct moisture.
- **Compatibility:** Use only with fixtures designed for PAR30 bulbs and compatible with LED technology.


- **Dimmers:** When using with a dimmer, ensure the dimmer is LED-compatible to prevent flickering or damage.
- **Heat:** LED bulbs generate heat, though less than incandescent bulbs. Ensure adequate ventilation around the bulb. Do not enclose in fixtures that restrict airflow excessively.
- **Disposal:** Dispose of bulbs according to local regulations. Do not dispose of with general household waste.

3. Setup and Installation

Installing your Luminus PAR30 LED bulb is a straightforward process. Follow these steps for safe and proper installation:

1. **Turn Off Power:** Locate the circuit breaker that controls the light fixture you intend to install the bulb in and turn off the power. This is a critical safety step.
2. **Remove Old Bulb:** Carefully unscrew the existing bulb from the fixture. Allow it to cool if it has been recently in use.
3. **Inspect Fixture:** Ensure the fixture is clean and dry, and that the socket is in good condition.
4. **Install New Bulb:** Gently screw the Luminus PAR30 LED bulb into the socket. Do not overtighten. The bulb features a standard E26 medium base.
5. **Restore Power:** Once the bulb is securely installed, turn the power back on at the circuit breaker.
6. **Test:** Turn on the light switch to confirm the bulb is working correctly.





95mm / 3.74"

116 mm / 4.57"

E26
Medium Base
Culot

BRIGHTNESS
LUMINOSITÉ 1000 LUMENS

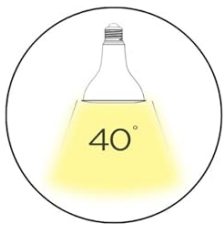
ENERGY USED 11W (75W EQ)
ÉNERGIE CONSOMMÉE

COLOR 5000K
COULEUR Daylight
 Lumière du jour


LIFESPAN
DURÉE DE VIE 25 000 h

DIMMABLE
INTENSITÉ RÉGLABLE


BEAM ANGLE
ANGLE DU FAISCEAU



40°



UL
LISTED



RoHS
COMPLIANT/CONFORME

Image 3.1: Technical specifications and dimensions of the Luminus PAR30 LED bulb, including brightness, energy usage, color temperature, lifespan, and beam angle.

4. Operating Instructions

Your Luminus PAR30 LED bulb is designed for simple operation and enhanced functionality.

Standard Operation:

Once installed, the bulb operates like any standard light bulb. Simply use the wall switch connected to the fixture to turn the light on or off.

Dimmable Functionality:

This Luminus PAR30 LED bulb is fully dimmable. If your fixture is connected to a compatible LED dimmer switch, you can adjust the light output from 5% to 100% brightness. This allows you to create various ambiances and save energy.

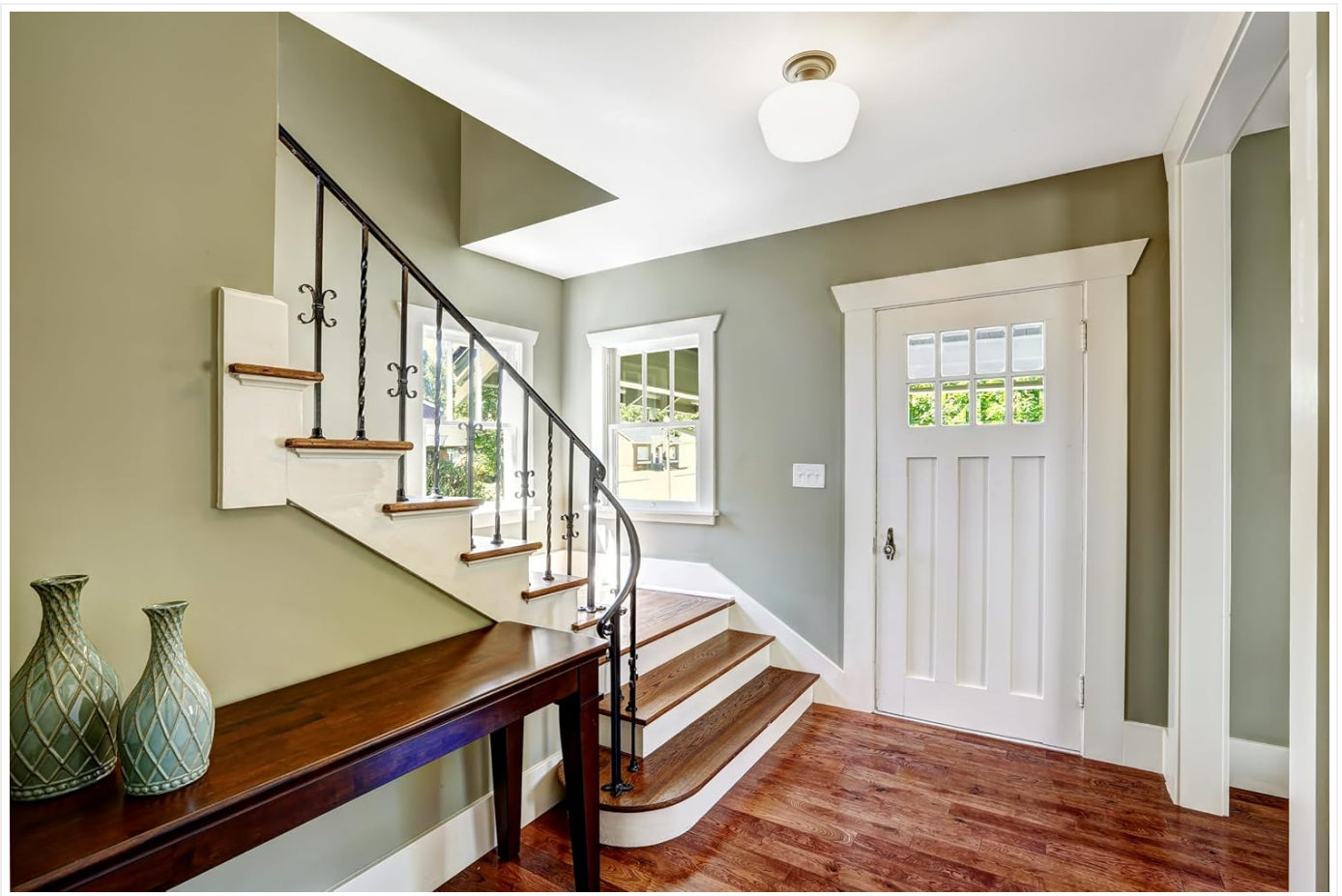


Image 4.1: Visual representation of the dimming capability, showing light intensity at 5%, 25%, 50%, and 100% brightness.

Brightness and Color Temperature:

The bulb provides 1000 lumens of brightness and a 5000K Daylight color temperature, offering a bright and clear light suitable for task lighting and general illumination where high visibility is desired.

Brightness

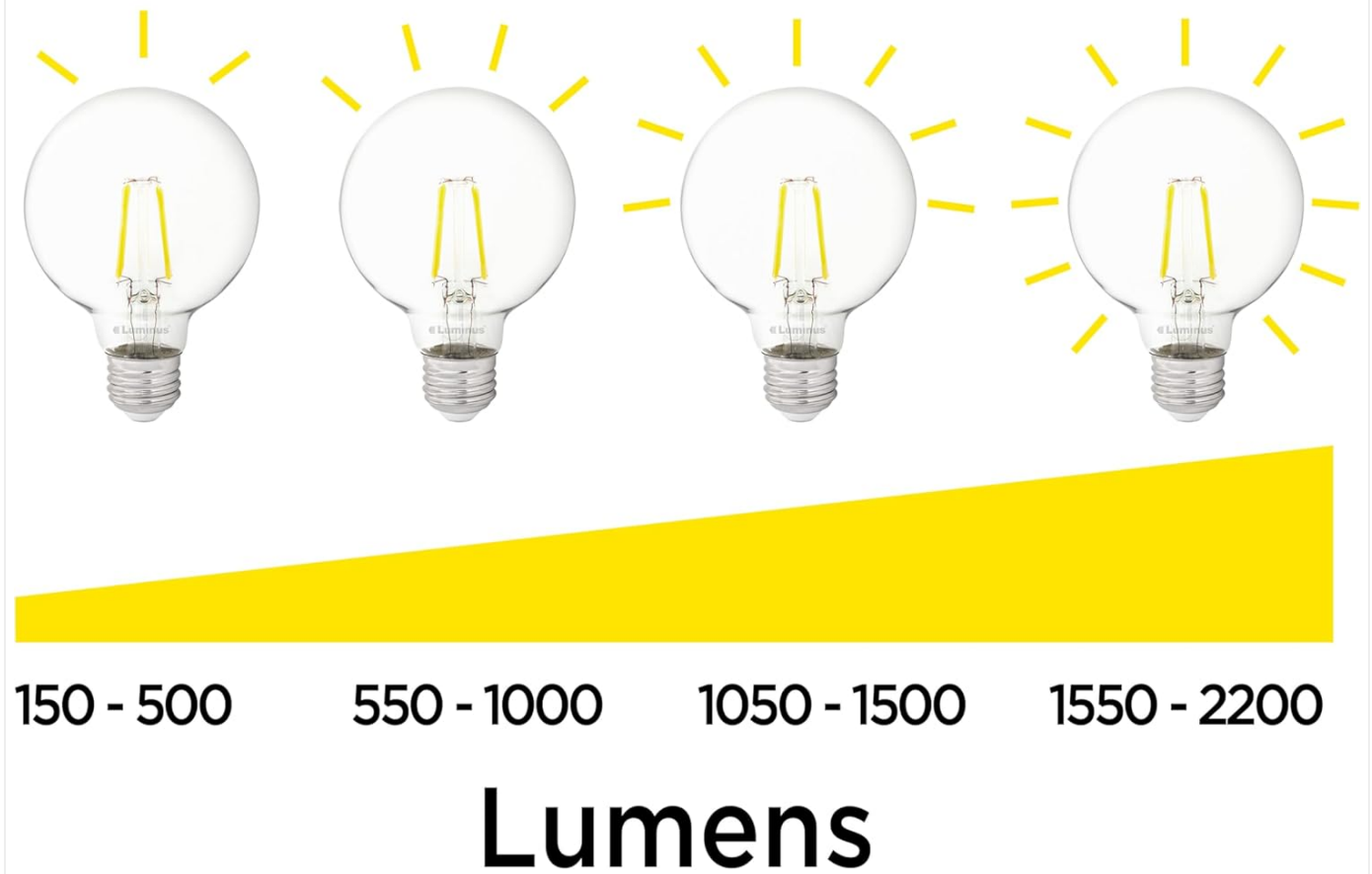


Image 4.2: A chart demonstrating the relationship between lumens and perceived brightness, indicating the 1000 lumens output of this bulb.



Image 4.3: An illustration comparing different color temperatures, from warm amber (2200K) to cool daylight (5000K), highlighting the 5000K daylight output of this bulb.

5. Maintenance

Luminus LED bulbs require minimal maintenance due to their long lifespan and durable design.

- **Cleaning:** Ensure the bulb is cool and the power is off before cleaning. Wipe the bulb with a soft, dry cloth. Do not use liquid cleaners or abrasive materials.
- **Lifespan:** The bulb has an estimated lifespan of 25,000 hours. This means under normal usage (e.g., 3 hours/day), the bulb can last for over 22 years.
- **Replacement:** Replace the bulb when it reaches the end of its operational life or if it shows signs of damage or malfunction.

6. Troubleshooting

If you encounter issues with your Luminus PAR30 LED bulb, refer to the following common troubleshooting steps:

Problem	Possible Cause	Solution
Bulb does not light up.	No power to the fixture, loose connection, faulty bulb, or incompatible dimmer.	<p>Check the circuit breaker.</p> <p>Ensure the bulb is screwed in tightly.</p> <p>Test the bulb in another working fixture.</p> <p>Verify dimmer compatibility if applicable.</p>
Bulb flickers or hums.	Incompatible dimmer switch, loose connection, or electrical interference.	<p>Ensure your dimmer is specifically designed for LED bulbs.</p> <p>Tighten the bulb in the socket.</p> <p>Consult an electrician if the issue persists.</p>
Light output is too low or inconsistent.	Dimmer setting too low, or bulb nearing end of life.	<p>Adjust the dimmer to a higher setting.</p> <p>If the bulb is old, consider replacement.</p>

If these steps do not resolve the issue, please refer to the Warranty and Support section for further assistance.

7. Specifications

Detailed technical specifications for the Luminus PAR30 LED Flood Bulb:

Specification	Value
Brand	Luminus
Model	PAR30
Light Type	LED
Wattage	11 Watts
Incandescent Equivalent	75 Watts
Lumen Output	1000 Lumens
Color Temperature	5000K Daylight
Lifespan	25,000 Hours
Dimmable	Yes
Bulb Shape Size	PAR30
Bulb Base	E26 (Medium Base)
Voltage	120 Volts
Item Weight	0.66 Pounds (for the pack)
Specific Uses	Indoor and outdoor use (not directly exposed to water)

Included Components	Light bulb (6)
---------------------	----------------

8. Warranty and Support

Luminus stands behind the quality of its products.

Warranty Information:

This Luminus LED PAR30 Flood Bulb comes with a **3-Year Warranty** from the manufacturer, Conglom. This warranty covers defects in materials and workmanship under normal use.

Contact Support:

For warranty claims, technical assistance, or any product-related inquiries, please contact Luminus customer support. You may also visit the official Luminus store for more information and resources:

Visit the Luminus
Store

When contacting support, please have your purchase receipt and product details (model number, date of purchase) readily available.

