

Chicco 04079751230070

Chicco GoFit Backless Booster Car Seat Instruction Manual

Model: 04079751230070

INTRODUCTION

This manual provides essential information for the proper installation, use, maintenance, and care of your Chicco GoFit Backless Booster Car Seat. Please read all instructions carefully before using the product to ensure the safety and comfort of your child.

SAFETY INFORMATION

WARNING: DEATH OR SERIOUS INJURY CAN OCCUR.

- Use only with children who weigh between 40 and 110 lbs (18 and 50 kgs) and whose height is between 44 and 57 inches (107 and 145 cm).
- Child must be at least 4 years old.
- Use only the vehicle's lap and shoulder belt system when restraining the child in this booster seat.
- Secure this child restraint with the vehicle lap and shoulder belt, even when unoccupied.
- Follow all instructions on this child restraint and in the written instructions before installing.
- The shoulder positioning clip must be positioned at the child's shoulder.

PRODUCT OVERVIEW

The Chicco GoFit Backless Booster Car Seat is designed for comfort and safety, featuring a contoured ErgoBoost seat with double foam padding. It includes integrated lap belt guides and a shoulder belt clip for proper vehicle seat belt positioning. Two soft-sided CupFolders provide convenient storage and are easily removable.



Figure 1: Chicco GoFit Backless Booster Car Seat. This image shows the overall design of the booster seat with its black and grey fabric, padded armrests, and integrated cup holders.

SETUP AND INSTALLATION

Proper installation is crucial for your child's safety. Always refer to your vehicle's owner's manual for specific instructions regarding child restraint installation.

- 1. Positioning the Booster Seat:** Place the GoFit booster seat firmly on the vehicle's seat. Ensure it is flush against the vehicle's seat back.
- 2. Securing the Booster Seat (Unoccupied):** Even when unoccupied, the booster seat should be secured with the vehicle's lap and shoulder belt system to prevent it from becoming a projectile in a collision.
- 3. Child Positioning:**
 - Ensure the child is seated upright with their back against the booster seat.
 - Guide the vehicle's lap belt through the integrated lap belt guides on both sides of the booster seat.

- Fasten the vehicle's shoulder belt across the child's chest and shoulder. Use the shoulder belt clip (if necessary) to position the shoulder belt correctly, ensuring it rests comfortably on the child's shoulder and not on their neck or face.



Figure 2: Proper shoulder belt positioning using the shoulder belt clip. The image shows a child in the booster seat with the vehicle's shoulder belt correctly positioned across their shoulder, guided by the orange clip.

OPERATING INSTRUCTIONS

The Chicco GoFit is a belt-positioning booster seat. It relies on your vehicle's existing lap and shoulder belt system to secure your child. Ensure the vehicle seat belt is always properly routed and snug against your child.

- Always ensure the child is sitting upright and still throughout the car ride.
- The contoured seat and double foam padding are designed for comfort during travel.
- Utilize the two soft-sided CupFolders for drinks or snacks. These cup holders can be folded away when not in use to save space.

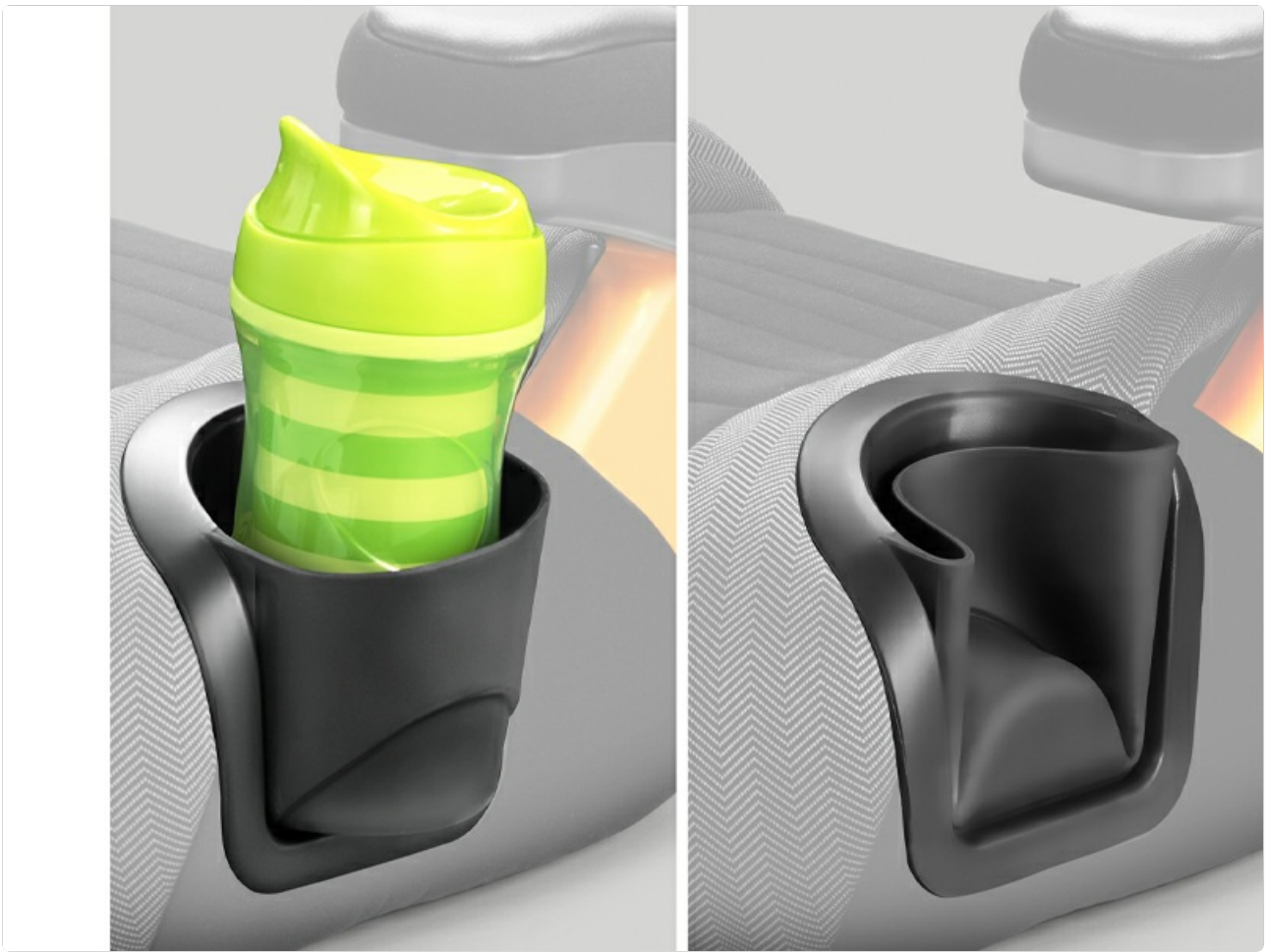


Figure 3: Collapsible cup holders. This image illustrates the flexible, soft-sided cup holders that can be folded in or out as needed.

CLEANING AND MAINTENANCE

Regular cleaning helps maintain the hygiene and longevity of your booster seat.

- **Seat Pad:** The seat pad is removable and machine-washable. Refer to the care instructions label on the product for specific washing guidelines.
- **Armrest Covers:** The pop-out armrest covers are also removable and machine-washable.
- **Foam Insert:** The foam insert may be hand rinsed and hung to dry.
- **Plastic Parts:** For plastic parts, sponge clean using warm water and mild soap. Towel dry thoroughly. Do not use bleach on fabric, foam, or plastic parts.
- **Cup Holders:** The removable cup holders are dishwasher safe for easy cleaning.



Figure 4: Removable armrest cover. This image shows a hand detaching the padded cover from an armrest, highlighting the ease of removal for cleaning.

TROUBLESHOOTING

If you encounter any issues with your Chicco GoFit Backless Booster Car Seat, please review the installation steps and ensure all components are correctly assembled and secured. For further assistance, contact Chicco customer support.

SPECIFICATIONS

Product Dimensions	15 x 17 x 5 inches
Item Model Number	04079751230070
Target Gender	Unisex





Minimum Weight Recommendation	40 Pounds
Maximum Weight Recommendation	110 Pounds
Minimum Height Recommendation	38 Inches
Maximum Height Recommendation	57 Inches
Material Type	Foam
Material Composition	82.3% Plastic, 1.8% Metal, 15.9% Fabric & Fill
Installation Type	Seat Belt
Orientation	Forward Facing
Item Weight	5 pounds



WARRANTY AND SUPPORT

For warranty information or customer support, please refer to the official Chicco website or contact their customer service department directly. Keep your purchase receipt for any warranty claims.

© 2023 Chicco. All rights reserved.

Related Documents - 04079751230070

	<p>Chicco GoFit Booster Car Seat User Guide: Installation, Safety, and Care</p> <p>Comprehensive user guide for the Chicco GoFit Booster Car Seat. Learn about installation, child safety guidelines, proper belt positioning, maintenance, and important warnings. Includes detailed instructions for safe use and care of your Chicco booster seat.</p>
	<p>Chicco GoFit Booster Car Seat User Guide - Safety & Installation</p> <p>Comprehensive user guide for the Chicco GoFit Booster Car Seat. Learn about child safety requirements, installation procedures, proper belt positioning, important warnings, and maintenance for secure child transportation. Meets CMVSS 213.2 standards.</p>
	<p>Chicco KidFit Booster Car Seat User Guide: Installation & Safety Instructions</p> <p>User guide for the Chicco KidFit Booster Car Seat. Provides instructions for installation, safe use, and child guidelines for both High-Back and Backless modes. Includes safety warnings and support contact information.</p>
	<p>Chicco Meraviglia: Manuale d'Uso e Guida Completa</p> <p>Scopri il seggiolone multifunzione Chicco Meraviglia. Istruzioni dettagliate per l'uso, la sicurezza e le diverse configurazioni: da sdraietta a sedia per adulti. Perfetto per ogni fase della crescita.</p>

 <p>The image shows the cover of the Chicco Take-A-Seat 3-in-1 Travel Seat Owner's Manual. It features the Chicco logo at the top left, a line drawing of the travel seat in the center, and the product name 'Take-A-Seat™ 3-in-1 Travel Seat Owner's Manual' at the bottom. There is also a small safety warning icon in the top right corner.</p>	<p>Chicco Take-A-Seat 3-in-1 Travel Seat Owner's Manual</p> <p>This owner's manual provides detailed instructions for the assembly, use, and maintenance of the Chicco Take-A-Seat 3-in-1 Travel Seat. It covers chair booster mode, floor seat mode, and toddler chair mode, along with safety warnings and component lists.</p>
 <p>The image shows the cover of the Chicco MYFIT® Harness + Booster User Guide. It features the Chicco logo at the top left, the product name 'MYFIT® Harness + Booster' in the center, and a yellow circular warning icon on the right. The text 'User Guide' is at the bottom.</p>	<p>Chicco MYFIT® Harness + Booster User Guide</p> <p>Comprehensive user guide for the Chicco MYFIT® Harness + Booster child restraint system, covering installation, safety guidelines, and usage for both harness and booster modes. Includes important warnings and best practices.</p>