

Douk Audio GFJ058NEW

Nobsound Mini Bluetooth 5.0 Power Amplifier

MODEL: GFJ058NEW - USER MANUAL

1. PRODUCT OVERVIEW

The Nobsound Mini Bluetooth 5.0 Power Amplifier is a compact yet powerful stereo Hi-Fi digital amplifier designed for versatile audio playback. It features multiple input options including AUX, USB, and Bluetooth 5.0, making it compatible with a wide range of audio devices. Its upgraded chip delivers 100W (50W*2) output power, providing clear and robust sound for home or desktop audio systems.



Figure 1: Front-top view of the Nobsound Mini Bluetooth 5.0 Power Amplifier.

2. WHAT'S IN THE BOX

Please check the package contents to ensure all items are present:

- 1 x NS-01G Pro Amplifier
- 1 x Power Supply
- 1 x AUX Cable
- 1 x USB Cable
- 1 x RCA Audio Cable
- 1 x Manual



PACKING LIST

Net Weight: 154g/0.34lb

Package Weight: 350g/0.77lb

- 1× NS-01G Pro Amplifier
- 1× AUX Cable
- 1× USB Cable
- 1× RCA Audio Cable
- 1× Manual
- 1× Power Supply

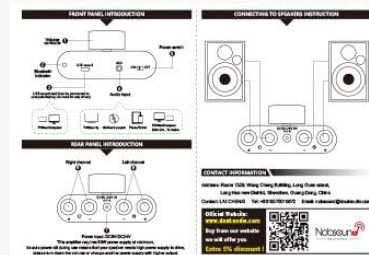


Figure 2: Included accessories and amplifier unit.

3. SETUP

3.1 Component Identification

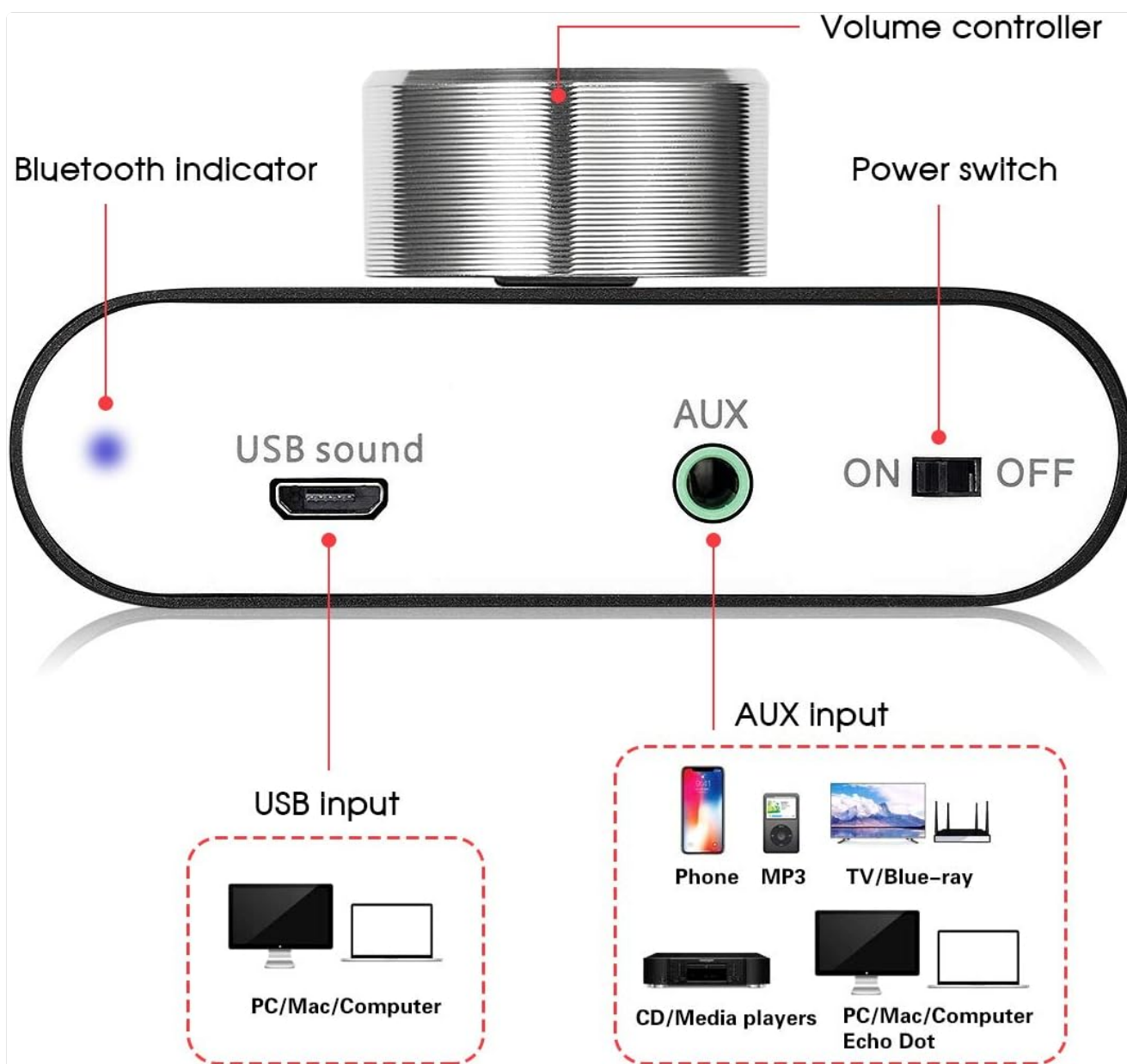


Figure 3: Front Panel Layout - Featuring the Volume Controller, Bluetooth Indicator, USB Sound input, AUX input, and Power Switch.



Figure 4: Rear Panel Layout - Showing DC9V-24V power input and speaker output terminals (compatible with banana plugs or bare wire).

3.2 Connecting Your Amplifier

1. **Power Connection:** Connect the provided power supply to the DC9V-24V IN port on the rear of the amplifier. Plug the power adapter into a suitable wall outlet.
2. **Speaker Connection:** Connect your passive speakers to the speaker output terminals on the rear panel. Ensure correct polarity (+ to + and - to -) for both left (L) and right (R) channels. These terminals support both banana plugs and bare speaker wire.
3. **Audio Input:** Choose one of the following input methods:
 - **Bluetooth Input:** Ensure the amplifier is powered on. The Bluetooth indicator light will flash, indicating it's ready for pairing. On your device (smartphone, tablet, etc.), search for "Nobsound" or "GFJ058NEW" in the Bluetooth settings and connect. The indicator light will turn solid blue once paired.
 - **AUX Input:** Connect your audio source (e.g., MP3 player, TV, CD player) to the AUX 3.5mm input jack on the front panel using the provided AUX cable.
 - **USB Input:** Connect your computer (PC/Mac) to the USB sound port on the front panel using the provided USB cable. No driver installation is typically required for most operating systems. This input allows for lossless audio playback.

MINI SIZE WITH EXQUISITE APPEARANCE

Aluminum case of five colors (black/silver/gold/blue/red)

for freely choose, can provide HiFi music and
decorate your home or office, very suitable
for home and desktop audio system use.



Figure 5: The amplifier supports Bluetooth 5.0, AUX, and USB audio inputs.

USB INPUT

USB input has no need for driver, plug-and-play



Figure 6: The USB input is plug-and-play, requiring no drivers for most computers.

4. OPERATING INSTRUCTIONS

1. **Power On/Off:** Use the ON/OFF switch located on the front panel to power the amplifier on or off.
2. **Volume Control:** Rotate the large knob on the top of the amplifier clockwise to increase volume and counter-clockwise to decrease volume. Adjust to a comfortable listening level.
3. **Input Selection:** The amplifier automatically prioritizes inputs. If multiple inputs are connected, disconnect the unused ones to ensure the desired source is playing. Bluetooth will typically take precedence if paired and active.

WITH 3 KINDS OF AUDIO INPUT

With Bluetooth 5.0 / 3.5mm AUX / USB audio input, compatible with most common audio device such as phone, tablet, computer, TV, CD player, decoder, preamp and so on.



Figure 7: The amplifier's mini size makes it suitable for various setups.

MAX OUTPUT POWER 50W+50W

Adopting classical TPA3116 chip, the max output power is improved to 100W(50W*2) which can drive most home speakers. HiFi clear and delicate sound, no audible noise even at high power output.



Figure 8: Despite its small size, the amplifier delivers up to 100W of output power.

5. MAINTENANCE

To ensure the longevity and optimal performance of your Nobsound Mini Bluetooth 5.0 Power Amplifier, follow these maintenance guidelines:

- **Cleaning:** Use a soft, dry cloth to wipe the exterior of the amplifier. Avoid using harsh chemicals, cleaning solvents, or abrasive materials, as these may damage the finish.
- **Ventilation:** Ensure the amplifier is placed in a well-ventilated area to prevent overheating. Do not block any ventilation openings.
- **Storage:** When not in use for extended periods, store the amplifier in a cool, dry place away from direct sunlight and extreme temperatures.
- **Connections:** Periodically check all cable connections to ensure they are secure and free from corrosion.

6. TROUBLESHOOTING

If you encounter any issues with your Nobsound Mini Bluetooth 5.0 Power Amplifier, please refer to the following common troubleshooting steps:

Problem	Possible Cause	Solution
No Sound Output	<ul style="list-style-type: none">Power not connected or switched on.Speakers not properly connected or faulty.Incorrect input selected or source device not playing.Volume too low.	<ul style="list-style-type: none">Ensure power supply is connected and amplifier is ON.Check speaker wire connections for correct polarity and secure fit.Verify the audio source is playing and connected to the correct input (AUX/USB/Bluetooth). Disconnect unused inputs.Increase the volume using the amplifier's knob and your source device.
Bluetooth Connection Issues	<ul style="list-style-type: none">Device too far from amplifier.Interference from other devices.Amplifier not in pairing mode.	<ul style="list-style-type: none">Ensure your device is within Bluetooth range (approx. 10 meters).Move away from other wireless devices (Wi-Fi routers, microwaves).Power cycle the amplifier and try pairing again. Ensure no other device is currently connected.
Distorted Sound	<ul style="list-style-type: none">Volume too high (clipping).Poor quality audio source or cable.Speaker impedance mismatch.	<ul style="list-style-type: none">Reduce the volume on both the amplifier and the source device.Try a different audio cable or source device to isolate the issue.Ensure your speakers' impedance is compatible with the amplifier (typically 4-8 ohms).
USB Audio Not Working	<ul style="list-style-type: none">USB cable faulty or not properly connected.Computer driver issue (rare).	<ul style="list-style-type: none">Try a different USB port on your computer or a different USB cable.Restart your computer. While drivers are usually not needed, ensure your operating system is up to date.

If the problem persists after trying these steps, please contact customer service for further assistance.

7. SPECIFICATIONS

Specification	Value
Brand	Douk Audio

Specification	Value
Manufacturer	Nobsound
Model Number	GFJ058NEW
Output Power	100 Watts (50W x 2)
Number of Channels	2
Bluetooth Version	5.0
Input Options	AUX (3.5mm), USB, Bluetooth
Minimum Supply Voltage	9 Volts (DC)
Maximum Supply Voltage	24 Volts (DC)
Supply Current	5 Amps
Material	Aluminum
Item Weight	15.5 ounces
Package Dimensions	6.61 x 6.38 x 2.52 inches
First Available Date	April 11, 2017
ISED Certification Registration Number	30459-M1PRO
ISED Hardware Version Identification Number (HVIN)	M1 PRO

8. WARRANTY AND SUPPORT

Nobsound products are backed by prompt and courteous customer service. If you encounter any issues or have questions regarding your amplifier, please do not hesitate to contact the manufacturer or seller for assistance. For additional information and support, you may refer to the official user manual PDF [Download User Manual \(PDF\)](#)

Related Documents - GFJ058NEW

