

Ideal Standard A6726AA

Ideal Standard A6726AA Concealed Shower Mixer Tap User Manual

Model: A6726AA

[Overview](#) [Safety Information](#) [Setup & Installation](#) [Operation](#) [Maintenance](#)
[Troubleshooting](#) [Specifications](#) [Warranty & Support](#)

1. PRODUCT OVERVIEW

The Ideal Standard A6726AA is a concealed single-lever shower mixer tap designed for modern bathrooms. This unit features a 47 mm cartridge with an EKO system, ensuring efficient water flow and temperature control. It is built for a recessed installation, providing a sleek and minimalist aesthetic. The mixer includes 1/2 inch supply and drain connections and comes with its built-in housing. Please note that additional shower parts are not included and must be acquired separately.

2. SAFETY INFORMATION

Please read all instructions carefully before installation and use. Failure to follow these instructions may result in personal injury or property damage.

- **Professional Installation Recommended:** Installation should be performed by a qualified plumber in accordance with local plumbing and building codes.
- **Water Supply:** Ensure the main water supply is turned off before beginning any installation or maintenance work.
- **Hot Water Safety:** Exercise caution when adjusting hot water temperatures to prevent scalding.
- **Tools:** Use appropriate tools for installation. Improper tools can damage the product or cause injury.
- **Cleaning:** Use only mild cleaning agents as specified in the maintenance section to avoid damaging the chrome finish.

3. SETUP & INSTALLATION

This section provides general guidelines for the installation of your Ideal Standard A6726AA concealed

shower mixer tap. For detailed instructions, always refer to the specific installation guide provided with the product packaging.

3.1 Package Contents

- Concealed single lever shower mixer unit
- Built-in housing
- Installation hardware (screws, seals, etc.)

Note: Shower parts such as shower heads, hoses, and wall outlets are not included and must be purchased separately.

3.2 Installation Steps (General)

1. **Prepare the Wall:** Create an opening in the wall suitable for the built-in housing, ensuring it aligns with the desired position for the mixer.
2. **Mount the Housing:** Secure the built-in housing within the wall opening according to the manufacturer's instructions, ensuring it is level and plumb.
3. **Connect Water Supplies:** Connect the 1/2 inch hot and cold water supply lines to the designated inlets on the mixer unit. Ensure all connections are watertight.
4. **Connect Outlet:** Connect the 1/2 inch mixed water outlet to the shower system.
5. **Install Mixer Cartridge and Trim:** Insert the 47 mm cartridge into the housing. Attach the decorative trim plate and handle, ensuring they are securely fastened and operate smoothly.
6. **Test for Leaks:** Slowly turn on the main water supply and check all connections for leaks. Operate the mixer to ensure proper function and temperature control.



Figure 1: The Ideal Standard A6726AA concealed shower mixer tap, showcasing its chrome finish and single lever design, integrated seamlessly into a tiled shower wall.

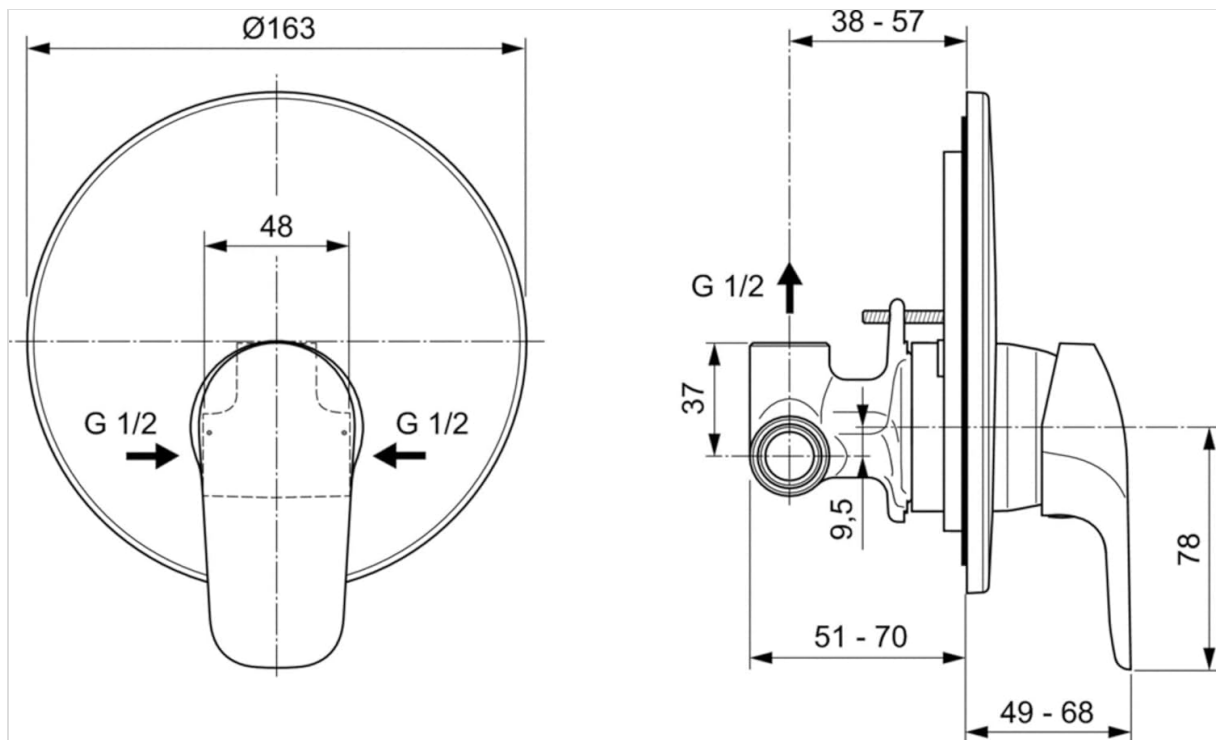


Figure 2: Technical diagram detailing the dimensions and connection points for the A6726AA mixer. This diagram is crucial for proper rough-in and installation planning.

4. OPERATION

The Ideal Standard A6726AA features a single lever for intuitive control of both water flow and temperature.

- **Turning On/Off:** Lift the lever to turn on the water. Push it down to turn off.
- **Adjusting Water Flow:** The further you lift the lever, the greater the water flow.
- **Adjusting Temperature:** Swivel the lever left for hotter water and right for colder water. The 47 mm EKO system cartridge helps in precise temperature and flow management.

5. MAINTENANCE

Proper care and maintenance will ensure the longevity and aesthetic appeal of your Ideal Standard shower mixer.

- **Cleaning the Finish:** Clean the chrome finish regularly with a soft cloth and mild soap or a non-abrasive cleaner specifically designed for chrome. Rinse thoroughly with clean water and dry with a soft cloth to prevent water spots.
- **Avoid Harsh Cleaners:** Do not use abrasive cleaners, scouring pads, acids, ammonia, bleach, or other harsh chemicals, as these can damage the chrome finish and internal components. The product is designed to be tarnish resistant, but harsh chemicals can compromise this feature.
- **Cartridge Maintenance:** If you experience persistent drips or difficulty in adjusting temperature/flow, the 47 mm ceramic cartridge may require cleaning or replacement. This task should ideally be performed by a qualified plumber.

6. TROUBLESHOOTING

Before contacting customer support, please refer to the following common issues and solutions:

Problem	Possible Cause	Solution
Low Water Flow	<ul style="list-style-type: none">Partially closed stopcockBlocked inlet filtersDebris in cartridge	<ul style="list-style-type: none">Ensure stopcocks are fully open.Clean or replace inlet filters.Clean or replace the cartridge (professional assistance recommended).
Water Drips After Shut-off	<ul style="list-style-type: none">Worn or faulty cartridge	<ul style="list-style-type: none">Replace the cartridge (professional assistance recommended).
Inconsistent Water Temperature	<ul style="list-style-type: none">Issues with hot/cold water supplyFaulty cartridge	<ul style="list-style-type: none">Check hot and cold water pressure.Clean or replace the cartridge.

If the problem persists after attempting these solutions, please contact a qualified plumber or Ideal Standard customer support.

7. SPECIFICATIONS

Feature	Detail
Model Number	A6726AA
Brand	Ideal Standard
Type	Concealed Single Lever Shower Mixer
Connections	1/2 inch supply and drain
Cartridge	47 mm with EKO system
Finish	Chrome
Material	Brass (body), Ceramic (handle material)
Mounting Type	Recessed
Number of Handles	1
Special Features	Tarnish Resistant
Product Dimensions	30 x 20 x 20 cm (approximate, refer to diagram for precise mixer dimensions)
Item Weight	1.16 Kilograms

8. WARRANTY & SUPPORT

Ideal Standard products are manufactured to high-quality standards and are backed by a manufacturer's warranty. The specific terms and duration of the warranty may vary by region and product.

- Warranty Claims:** In the event of a defect or issue covered by the warranty, please retain your proof of purchase and contact the retailer where the product was purchased or Ideal Standard customer service directly.

- **Customer Support:** For technical assistance, spare parts, or further inquiries, please visit the official Ideal Standard website or contact their customer support line in your region. Contact details can typically be found on the product packaging or the manufacturer's website.