

[Manuals.plus](#) /

> [NADAMOO](#) /

> NADAMOO 2D Wireless Barcode Scanner User Manual

NADAMOO BUR3071

ASK A QUESTION ABOUT THIS MANUAL

Ask about setup, troubleshooting, compatibility, parts, safety, or missing instructions. Manuals+ will review the question and use this page's manual context to help answer it.

Question

Example: How do I reset this device or fix this error?

Details

Model number, symptoms, what you tried, or the section of the manual you are using.

[Submit question](#)

NADAMOO 2D Wireless Barcode Scanner User Manual

Model: BUR3071 | Brand: NADAMOO

1. PRODUCT OVERVIEW

The NADAMOO 2D Wireless Barcode Scanner is a versatile device designed for efficient barcode data capture. It supports multiple connection methods and scanning modes, making it suitable for various applications across different operating systems and devices.



Figure 1: NADAMOO 2D Wireless Barcode Scanner, showing the scanner unit, its stand, and the USB wireless dongle.

2. SETUP AND CONNECTION

The scanner offers three primary connection methods: Bluetooth, 2.4G Wireless via USB dongle, and Wired via USB cable. Ensure the scanner is charged before initial use.

2.1. Connection Methods

- **Bluetooth Function:** Connects wirelessly to devices with Bluetooth capability, such as smartphones, tablets, and computers. The effective range is up to 50 meters (164 ft) in a barrier-free environment.
- **2.4GHz Wireless Connection:** Utilizes the included USB dongle for wireless connection to computers and laptops. The transmission distance can reach up to 100 meters (330 ft) in an environment without obstacles.
- **Wired Connection:** Connects directly to your device using the provided USB cable. This mode also allows for charging the scanner while in use.

2.2. Supported Systems and Devices

The scanner is compatible with a wide range of operating systems and devices:

- **Operating Systems:** Windows XP/7/8/10, Mac OS, Linux, Windows Mobile, Android OS, iOS.
- **Devices:** Smartphones, Tablets, Computers, Register POS systems.

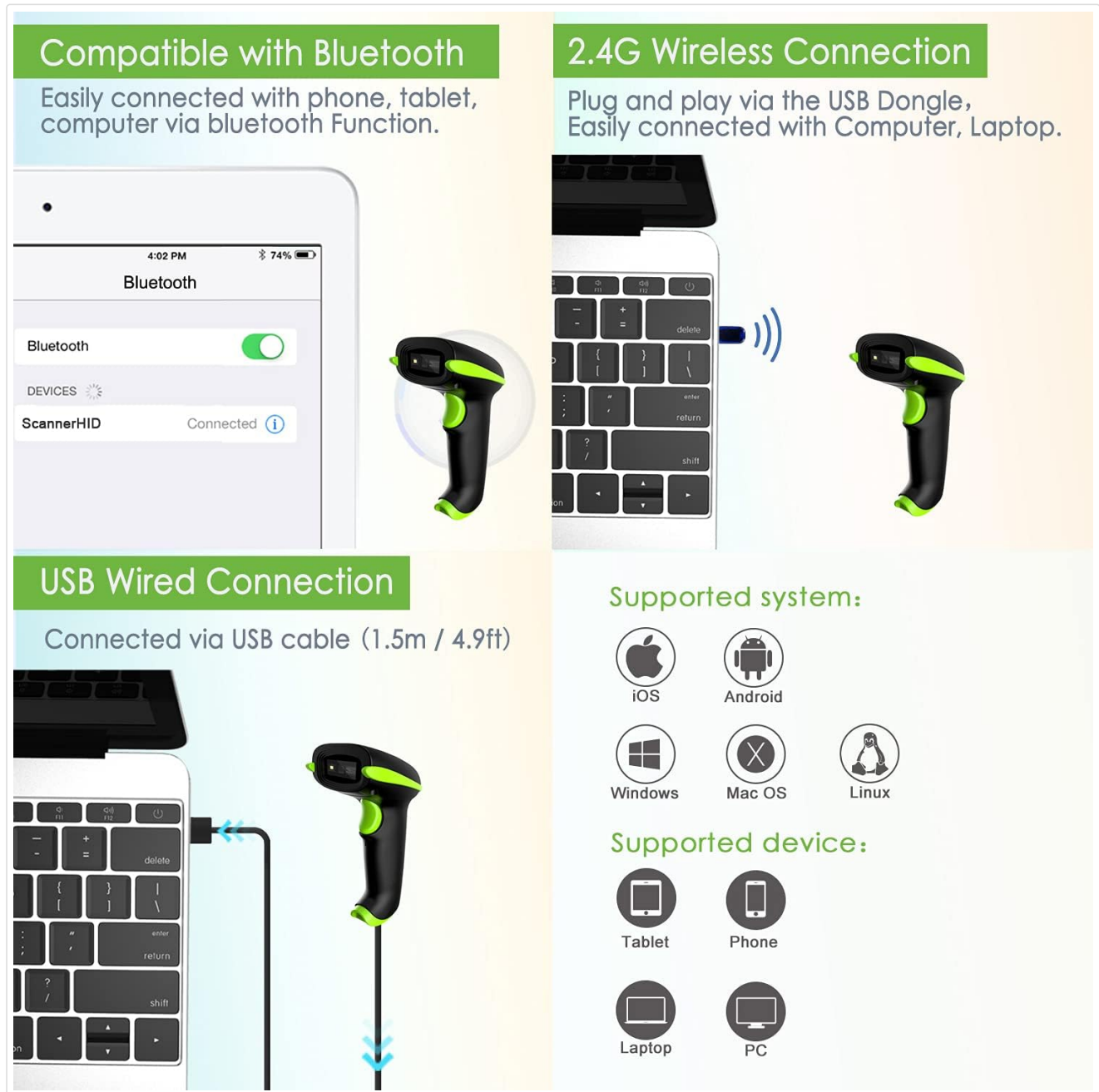


Figure 2: Overview of the three connection methods and supported devices for the scanner.

3. OPERATING INSTRUCTIONS

This section details the various scanning and data upload modes available with your NADAMOO barcode scanner.

3.1. Scanning Modes

The scanner supports three distinct scanning modes:

- **Key Trigger Mode:** Press the trigger button to initiate a scan.

- **Auto-induction Mode:** The scanner automatically detects a barcode within its field of view and scans it without requiring a trigger press. This mode is ideal when combined with the hands-free stand.
- **Continuous Mode:** The scanner continuously emits a scan beam, allowing for rapid scanning of multiple barcodes without repeated trigger presses.



Figure 3: The hands-free stand and the three available scanning modes.

3.2. Data Upload Modes

The scanner offers two data upload modes:

- **Instant Upload Mode:** Barcode data is transmitted to the connected device immediately after each successful scan.
- **Storage Mode:** Scanned barcode data is stored in the scanner's built-in memory. This mode is useful for scanning in areas outside of wireless range. The built-in storage can save up to 10,000 barcodes. Data can be uploaded to the device in batch when reconnected.

Two Upload Mode

Storage Mode

Store the data in scanner's memory and upload data in batches



Instant upload mode

Figure 4: Data upload modes: Storage Mode and Instant Upload Mode.

3.3. Barcode Compatibility

The scanner is equipped with a CMOS sensor, enabling it to capture both 1D and 2D barcodes from various surfaces, including labels, paper, and digital displays (mobile phones, computer screens).

- **1D Barcodes:** UPC, EAN, Code 128, Code 39, Code 93, Code 11, Matrix 2 of 5, Interleaved 2 of 5, Standard 2 of 5, Industrial 2 of 5, Codabar, MSI, GS1.
- **2D Barcodes:** QR Code, Data Matrix, PDF417, Aztec code, Maxicode.

Support Screen Scanning

Easily read 1D, 2D, QR Code
from Paper, Monitor Screen



Figure 5: The scanner's capability to read barcodes from both physical labels and digital screens.

3.4. Operational Demonstration

The following video demonstrates the scanner's various functions, including different connection types, scanning modes, and barcode reading capabilities.

Your browser does not support the video tag.

Video 1: A comprehensive demonstration of the NADAMOO 2D Wireless Barcode Scanner's features and operational modes.

4. MAINTENANCE

Proper maintenance ensures the longevity and optimal performance of your barcode scanner.

- **Cleaning:** Use a soft, dry cloth to clean the scanner's exterior. For the scanning window, use a lint-free cloth lightly dampened with a mild, non-abrasive cleaner. Avoid harsh chemicals or abrasive materials.
- **Storage:** Store the scanner in a cool, dry place away from direct sunlight and extreme temperatures. When

not in use for extended periods, ensure the battery is partially charged (around 50%) to preserve battery health.

- **Handling:** Avoid dropping the scanner or subjecting it to strong impacts. Protect the scanning window from scratches.

5. TROUBLESHOOTING

This section provides solutions to common issues you might encounter with your scanner.

5.1. Connectivity Issues

- **No Connection:** Ensure the scanner is fully charged. For Bluetooth, verify Bluetooth is enabled on your device and the scanner is in pairing mode. For 2.4G Wireless, ensure the USB dongle is securely plugged in and recognized by your device.
- **Intermittent Connection:** Check for obstacles between the scanner and the receiver (dongle or Bluetooth device). Walls and other physical objects can attenuate signals, reducing wireless range.

Long Transmission Range



Compatible with Bluetooth Function

Up to 10m/ 33ft in an environment with obstructions

Max 50m/ 164ft barrier-free environment



Connected via 2.4GHz Wireless USB Dongle

Up to 30m/ 99ft in an environment with obstructions

Max 100m/ 330ft barrier-free environment

Figure 6: Wireless transmission range and potential impact of obstacles.

5.2. Scanning Problems

- **Barcode Not Reading:** Ensure the barcode is clean and not damaged. Adjust the distance and angle of the scanner to the barcode. The CMOS sensor allows for scanning from various angles.
- **Poor Quality Barcodes:** The scanner is designed to read even poor quality or low contrast barcodes. If issues persist, try scanning the barcode under different lighting conditions.

6. SPECIFICATIONS

Feature	Detail
Model Number	BUR3071
Package Dimensions	7.05 x 4.29 x 3.31 inches
Item Weight	4.5 ounces
Batteries	1 Lithium Ion battery required
Connectivity Technology	Wired: USB Powerline, Bluetooth, 2.4G Wireless
Compatible Devices	Desktop, Laptop, Smartphone, Tablet
Power Source	Corded Electric, USB Adapter, USB Cable
Manufacturer	NADAMOO
First Available Date	April 6, 2017

7. WARRANTY AND SUPPORT

For detailed warranty information and technical support, please refer to the official NADAMOO website or contact their customer service directly. A comprehensive User Guide in PDF format is also available for download:

[Download User Guide \(PDF\)](#)