



[Manuals.plus](#) /

> [Air Wick](#) /

> Air Wick Plug-in Scented Oil Refills, Fresh Linen (Model 1) Instruction Manual

Air Wick 1

Air Wick Plug-in Scented Oil Refills - Fresh Linen (Model 1)

Instruction Manual

INTRODUCTION

Thank you for choosing Air Wick Plug-in Scented Oil Refills. This product is designed to provide continuous and long-lasting fragrance, enhancing the atmosphere of your home or office. The Fresh Linen scent captures the essence of clean laundry, sunshine, and pure white flowers, infused with natural essential oils.

Each refill offers up to 45 days of fragrance when used on the lowest setting in an Air Wick scented oil warmer. This manual provides essential information for proper setup, operation, and maintenance to ensure optimal performance and safety.



Image: Air Wick Snuggle Fresh Linen Scented Oil Refills, highlighting natural essential oils and the fresh linen scent concept.

PACKAGE CONTENTS

- 5 Air Wick Scented Oil Refills (Fresh Linen)
- *Note: Air Wick scented oil warmer unit sold separately.*

SETUP INSTRUCTIONS

1. **Unscrew Cap:** Remove the cap from the scented oil refill bottle.
2. **Insert Refill:** Insert the refill bottle into the Air Wick warmer unit. Push the bottle upwards into the warmer until a "click" is heard, ensuring it is securely fastened.
3. **Plug In:** Plug the assembled warmer unit into an electrical outlet. Ensure the unit is in an upright position.
4. **Adjust Fragrance:** Rotate the dial on the top of the warmer to select your desired fragrance intensity.



Image: Step-by-step visual guide for assembling and plugging in the Air Wick scented oil warmer.

OPERATING INSTRUCTIONS

The Air Wick scented oil warmer features an Easy Adjust™ system with 5 fragrance settings, allowing you to customize the scent intensity to your preference.

- **Adjusting Intensity:** Locate the dial on the top of the warmer unit. Rotate the dial towards the '+' symbol for a stronger fragrance release, or towards the '-' symbol for a lighter fragrance.
- **Continuous Fragrance:** Each refill provides continuous fragrance for up to 45 days when set to the lowest intensity.
- **Recommended Use:** Ideal for use in bedrooms, bathrooms, living rooms, hallways, kitchens, and office spaces.



Image: Illustration of the Easy Adjust™ dial for controlling fragrance intensity.



Image: Indication that each refill lasts up to 45 days on the lowest setting.

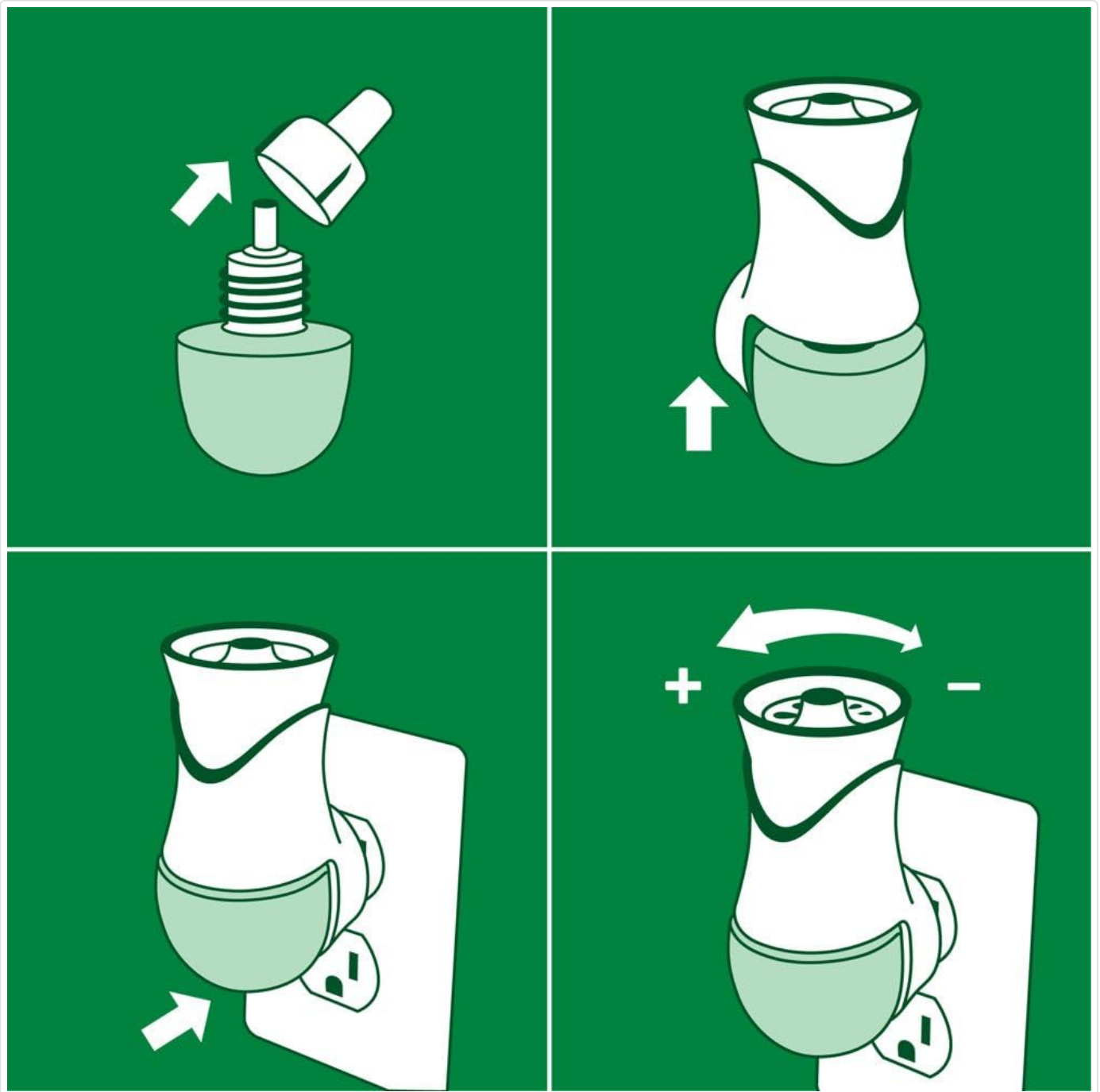


Image: Visual guide to recommended usage areas for the Air Wick plug-in.

MAINTENANCE

- **Refill Replacement:** Replace the refill bottle when the liquid level is low or when the fragrance diminishes. Ensure the warmer is unplugged before replacing the refill.
- **Cleaning:** Periodically wipe the exterior of the warmer unit with a dry cloth. Do not immerse the unit in water or use liquid cleaners.
- **Storage:** Store unused refills in a cool, dry place, away from direct sunlight and heat.

TROUBLESHOOTING

Problem	Possible Cause	Solution
---------	----------------	----------

Problem	Possible Cause	Solution
No scent or weak scent	Refill is empty or low; fragrance setting is too low; unit is in a large or well-ventilated area.	Replace refill; increase fragrance setting; move unit to a smaller area or use multiple units.
Scent is too strong	Fragrance setting is too high.	Decrease fragrance setting.
Unit not working	Not properly plugged in; electrical outlet issue; warmer unit malfunction.	Ensure unit is fully plugged in; test with another outlet; contact customer support if warmer unit is faulty.

SPECIFICATIONS

- **Product Type:** Scented Oil Refills
- **Scent:** Fresh Linen
- **Quantity:** 5 refills per pack
- **Volume per Refill:** 0.67 fl oz (20 mL)
- **Scent Duration:** Up to 45 days per refill (on low setting)
- **Model Number:** 1
- **Manufacturer:** Air Wick

SAFETY INFORMATION

WARNING: When using electrical products, basic precautions should always be followed. Please read all instructions before using this product.

- Keep out of reach of children and pets.
- Harmful if swallowed. If swallowed, call a Poison Control Center or doctor immediately. Do not induce vomiting.
- Avoid contact with eyes and skin. In case of contact, rinse immediately with plenty of water and seek medical advice.
- Do not place in areas where the warmer may be covered or blocked.
- Do not use with extension cords or power strips.
- Always plug the warmer into a wall outlet in an upright position.
- Do not place on or near polished, painted, or plastic surfaces, as fragrance oils may cause damage.
- Statements regarding dietary supplements have not been evaluated by the FDA and are not intended to diagnose, treat, cure, or prevent any disease or health condition.

WARRANTY AND SUPPORT

For product support, questions, or concerns, please visit the official Air Wick website or contact their customer service department. Specific warranty details may vary by region and purchase location. Please retain your proof of purchase for any warranty claims.

Online Support: www.airwick.us

