

## Manuals+

[Q & A](#) | [Deep Search](#) | [Upload](#)

manuals.plus /

> [PwrON](#) /

> [PwrON AC to DC Adapter User Manual for Nordictrack and Audiostrider Fitness Equipment](#)

**PwrON 1701-0320055**

# PwrON AC to DC Adapter User Manual

Model: 1701-0320055

## 1. INTRODUCTION

---

This manual provides essential instructions for the safe and effective use of your PwrON AC to DC Adapter, Model 1701-0320055. This power supply is designed to provide reliable power to compatible Nordictrack Audiorider U300, R400 stationary bikes, and Audiostrider 600, Cx650, 800, Cx920 elliptical machines. Please read this manual thoroughly before use and retain it for future reference.

## 2. SAFETY INFORMATION

---

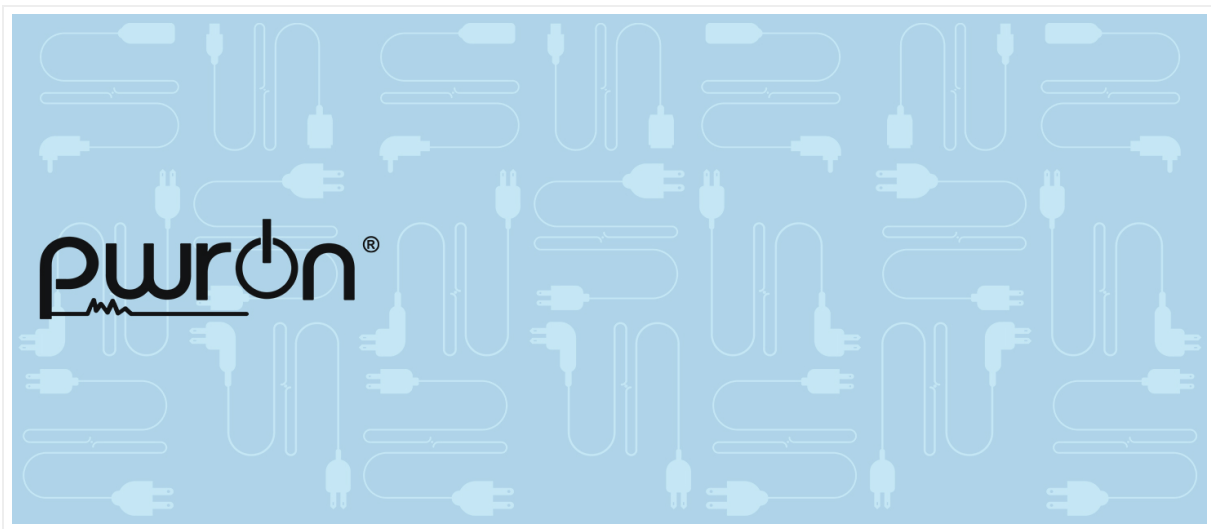
To ensure safe operation and prevent damage, observe the following safety precautions:

- **Over Current Protection:** The adapter is designed to protect against excessive current flow.
- **Over Voltage Protection:** Safeguards connected devices from voltage surges.
- **Over Temperature Protection:** Prevents overheating of the adapter.
- **Short Circuit Protection:** Automatically shuts down in case of a short circuit.
- Ensure the adapter's input voltage (100-240VAC, 50/60Hz) matches your power outlet.
- Do not expose the adapter to water, moisture, or extreme temperatures.
- Avoid dropping or subjecting the adapter to strong impacts.
- Do not attempt to open or repair the adapter yourself. Refer all servicing to qualified personnel.
- Always unplug the adapter from the power outlet when not in use or before cleaning.

## 3. PRODUCT OVERVIEW

---

The PwrON AC to DC Adapter is a reliable power solution featuring robust construction and multiple safety mechanisms. It provides a stable power output suitable for various fitness equipment.



**Figure 1:** PwrON AC to DC Adapter showing front and back views, along with icons representing Over Temperature Protection, Battery Protection, Steady Current Fast Charging, Short Circuit Output Protection, Over Current Output Protection, and Output Overvoltage Protection.

Key features include:

- **Universal Input:** Compatible with worldwide input voltage 100-240VAC, 50/60Hz.
- **Advanced Safety:** Equipped with Over Voltage Protection, Over Heat Protection, Over Current Protection, and Short Circuit Protection.
- **Durable Design:** Constructed with high-quality electronic components for long-lasting performance.

## 4. SETUP INSTRUCTIONS

---

1. **Verify Compatibility:** Before connecting, ensure that your device (Nordictrack Audiorider U300/R400 or Audiostrider 600/Cx650/800/Cx920) requires a power adapter with the specifications of Model 1701-0320055. Refer to your device's original manual or power input requirements.
2. **Connect to Device:** Insert the barrel connector end of the PwrON adapter firmly into the power input port of your fitness equipment.
3. **Connect to Power Outlet:** Plug the AC plug of the adapter into a standard wall power outlet (100-240VAC, 50/60Hz).
4. **Power On:** Once connected, your device should receive power. Follow your device's instructions to power it on.

## HIGH QUALITY ELECTRONIC COMPONENTS

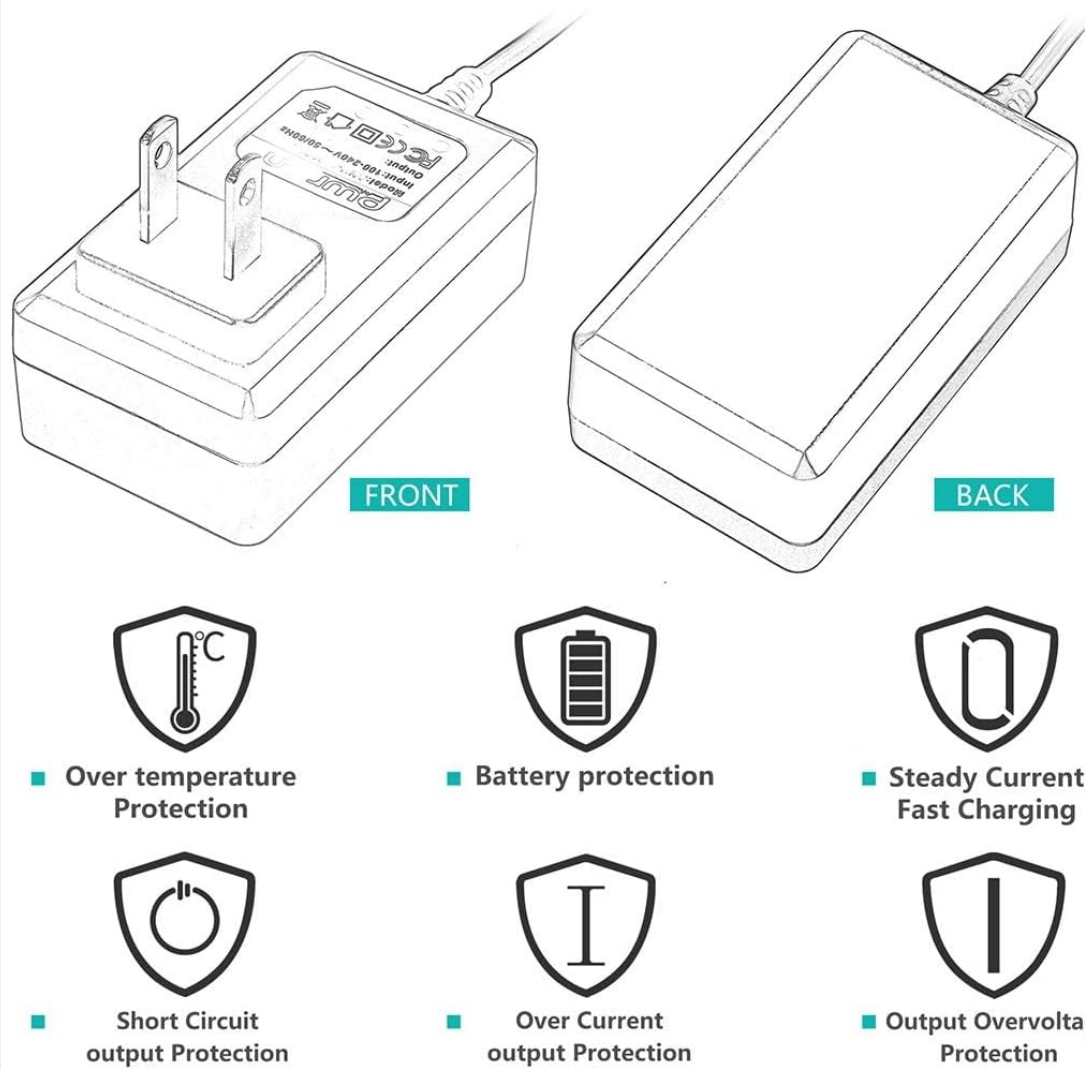


Figure 2: The PwrON AC to DC Adapter, illustrating its compact design and two-prong plug for connection to a wall outlet.

## 5. OPERATING INSTRUCTIONS

The PwrON AC to DC Adapter operates automatically once connected. It provides continuous power to your compatible fitness equipment. No user intervention is required for its operation.

- Ensure the adapter is placed in a well-ventilated area to prevent heat buildup.
- Do not cover the adapter during operation.
- If the adapter feels excessively hot, disconnect it immediately and check for proper ventilation or potential issues with the connected device.

## 6. MAINTENANCE

Minimal maintenance is required for the PwrON AC to DC Adapter.

- **Cleaning:** Disconnect the adapter from the power outlet and the device before cleaning. Use a soft, dry cloth to wipe the exterior. Do not use liquid cleaners or solvents.
- **Storage:** When not in use, store the adapter in a cool, dry place, away from direct sunlight and

moisture. Avoid tightly coiling the cable to prevent damage.

- **Inspection:** Periodically inspect the adapter and cable for any signs of damage, such as cuts, frayed wires, or bent pins. If damage is found, discontinue use and replace the adapter.

## 7. TROUBLESHOOTING

---

If you encounter issues with your PwrON AC to DC Adapter, refer to the following common problems and solutions:

Problem	Possible Cause	Solution
Device not powering on.	<ul style="list-style-type: none"><li>◦ Adapter not properly connected.</li><li>◦ Power outlet not functioning.</li><li>◦ Incompatible adapter or device issue.</li></ul>	<ul style="list-style-type: none"><li>◦ Ensure both ends of the adapter are securely plugged in.</li><li>◦ Test the power outlet with another device.</li><li>◦ Verify the adapter's model number and specifications match your device's requirements.</li></ul>
Adapter feels excessively hot.	<ul style="list-style-type: none"><li>◦ Poor ventilation.</li><li>◦ Overload or internal fault.</li></ul>	<ul style="list-style-type: none"><li>◦ Ensure the adapter is in a well-ventilated area, not covered.</li><li>◦ Disconnect immediately. If the issue persists, discontinue use.</li></ul>
Intermittent power supply.	<ul style="list-style-type: none"><li>◦ Loose connection.</li><li>◦ Damaged cable or connector.</li></ul>	<ul style="list-style-type: none"><li>◦ Check all connections for tightness.</li><li>◦ Inspect the cable and connector for visible damage. Replace if damaged.</li></ul>

If troubleshooting steps do not resolve the issue, please contact customer support.

## 8. SPECIFICATIONS

---

Feature	Detail
Model Number	1701-0320055
Brand	PwrON
Input Voltage	100-240VAC, 50/60Hz
Connector Type	Barrel Connector
Compatible Devices	Nordictrack Audiorider U300, R400 Stationary Bikes; Audiostrider 600, Cx650, 800, Cx920 Ellipticals
Safety Features	Over Current Protection, Over Voltage Protection, Over Temperature Protection, Short Circuit Protection
Certifications	CE, FCC
Manufacturer	PwrON
Date First Available	March 23, 2017

## 9. WARRANTY INFORMATION

---

PwrON products are designed for reliability and performance. Specific warranty details may vary. For information regarding the warranty period and terms for your PwrON AC to DC Adapter, please refer to the product packaging or contact PwrON customer support directly. Keep your purchase receipt as proof of purchase.

## 10. CUSTOMER SUPPORT

---

If you have any questions, concerns, or require assistance with your PwrON AC to DC Adapter, please do not hesitate to contact us. Our support team is available to help.

You can visit the official PwrON store for more information and contact options:

Visit PwrON  
Store