

symcode Mj-2877L

Symcode Mj-2877L 1D Mini Wireless Handheld Laser Barcode Scanner User Manual

Model: Mj-2877L | Brand: Symcode

1. INTRODUCTION

The Symcode Mj-2877L is a versatile 1D mini wireless handheld laser barcode scanner designed for efficient data collection across various platforms. It supports both Bluetooth 4.0 and 2.4G wireless connectivity, making it compatible with POS systems, Android, iOS, iMac, and iPad devices. This manual provides comprehensive instructions to help you set up, operate, and maintain your scanner.

2. PRODUCT OVERVIEW AND COMPONENTS

Familiarize yourself with the key parts of your Symcode Mj-2877L barcode scanner:

Product analysis



Figure 1: Product Components. An exploded view diagram highlighting key components of the scanner: indicator lights, scan window, ON/OFF button, scanning switch, battery compartment, and hand strap attachment point.

- **Scan Window:** Emits the laser beam for scanning barcodes.
- **Indicator Lights:** Provide status feedback (e.g., power, connection, scan success).
- **ON/OFF Button:** Powers the device on or off.
- **Scanning Switch:** Activates the laser for scanning.
- **Battery Compartment:** Houses the rechargeable lithium-ion battery.
- **Hand Strap Attachment:** For securing a hand strap (included).

3. SETUP

3.1 Battery Installation and Charging

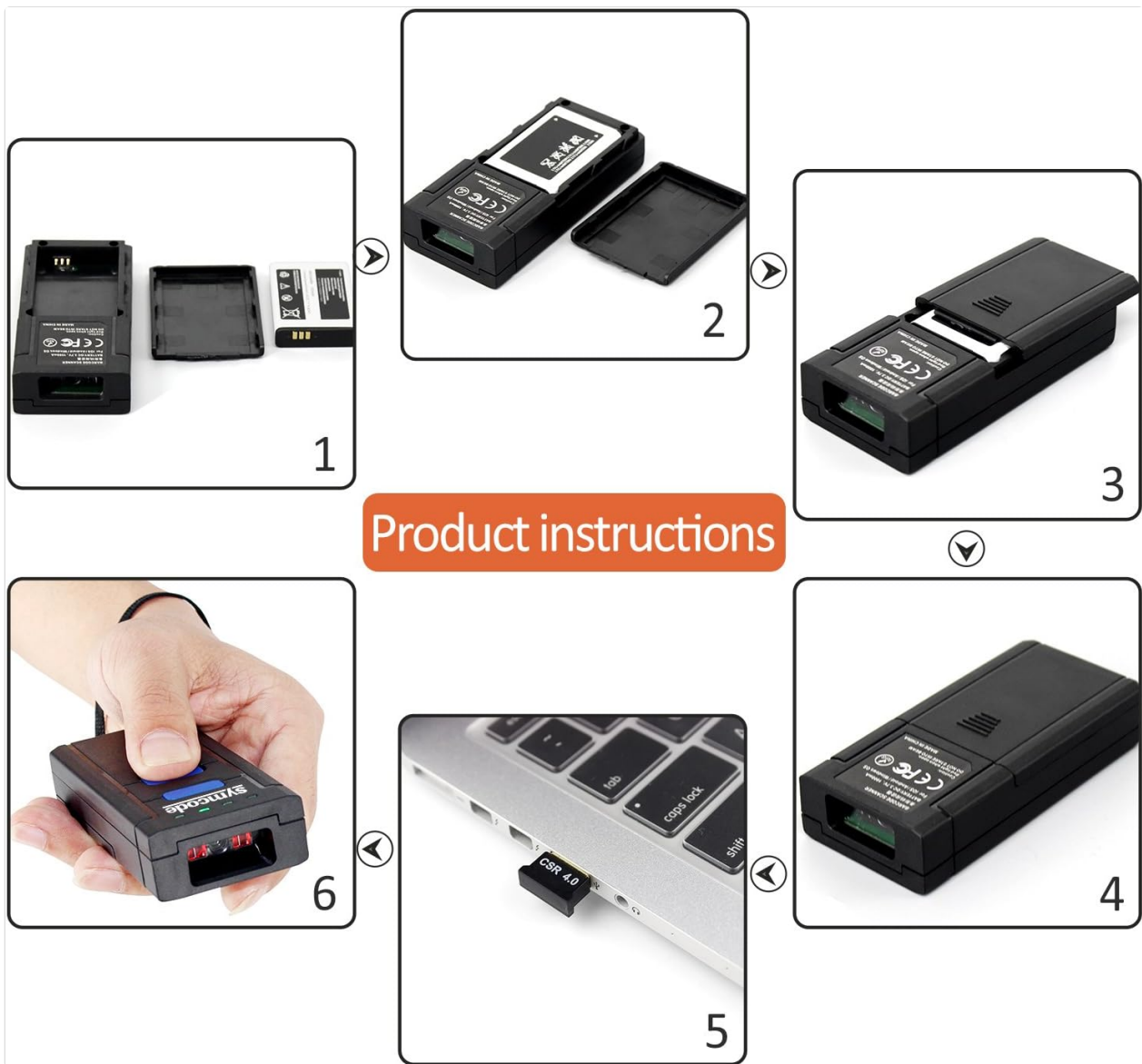


Figure 2: Battery Installation and Charging. A visual guide demonstrating how to open the battery compartment, insert the lithium-ion battery, close the compartment, and connect the scanner to a USB charging cable.

1. Open the battery compartment cover.
2. Insert the provided DC 3.7V, 1000mA Li-ion battery, ensuring correct polarity.
3. Close the battery compartment cover securely.
4. Connect the scanner to a USB power source using the included charging cable. The charging time is approximately 3 hours.

3.2 Attaching the Belt Clip

Your browser does not support the video tag.

Video 1: Installation and Removal of Belt Clip. This video provides a visual guide on how to attach and detach the belt clip from the barcode scanner, ensuring secure and convenient portability.

To attach the belt clip, align it with the screw holes on the back of the scanner and secure it using the provided screws. To remove, simply unscrew.

4. CONNECTIVITY

The Symcode Mj-2877L supports two primary wireless connection methods:

Large capacity

Barcode scanner come with 16M storage capacity. Safe and reliable, it can store more than 50000 codes on storage working mode.



16M



Figure 3: Wired and Wireless Modes. This diagram shows two main modes: wired connection via USB cable for charging and data transmission, and wireless modes (2.4G for computers, Bluetooth for mobile devices) without needing driver installation for mobile.

4.1 2.4G Wireless Mode (for PC/POS Machine)



Figure 4: 2.4G Wireless Connection. The scanner is shown in use, with its laser active, and a separate image illustrates the 2.4G wireless USB receiver plugged into a laptop.

1. Insert the provided USB wireless receiver into an available USB port on your PC or POS machine.
2. Turn on the barcode scanner. It should automatically connect to the receiver.
3. The scanner is now ready for use.

4.2 Bluetooth Mode (for Smartphones, Tablets, Laptops)

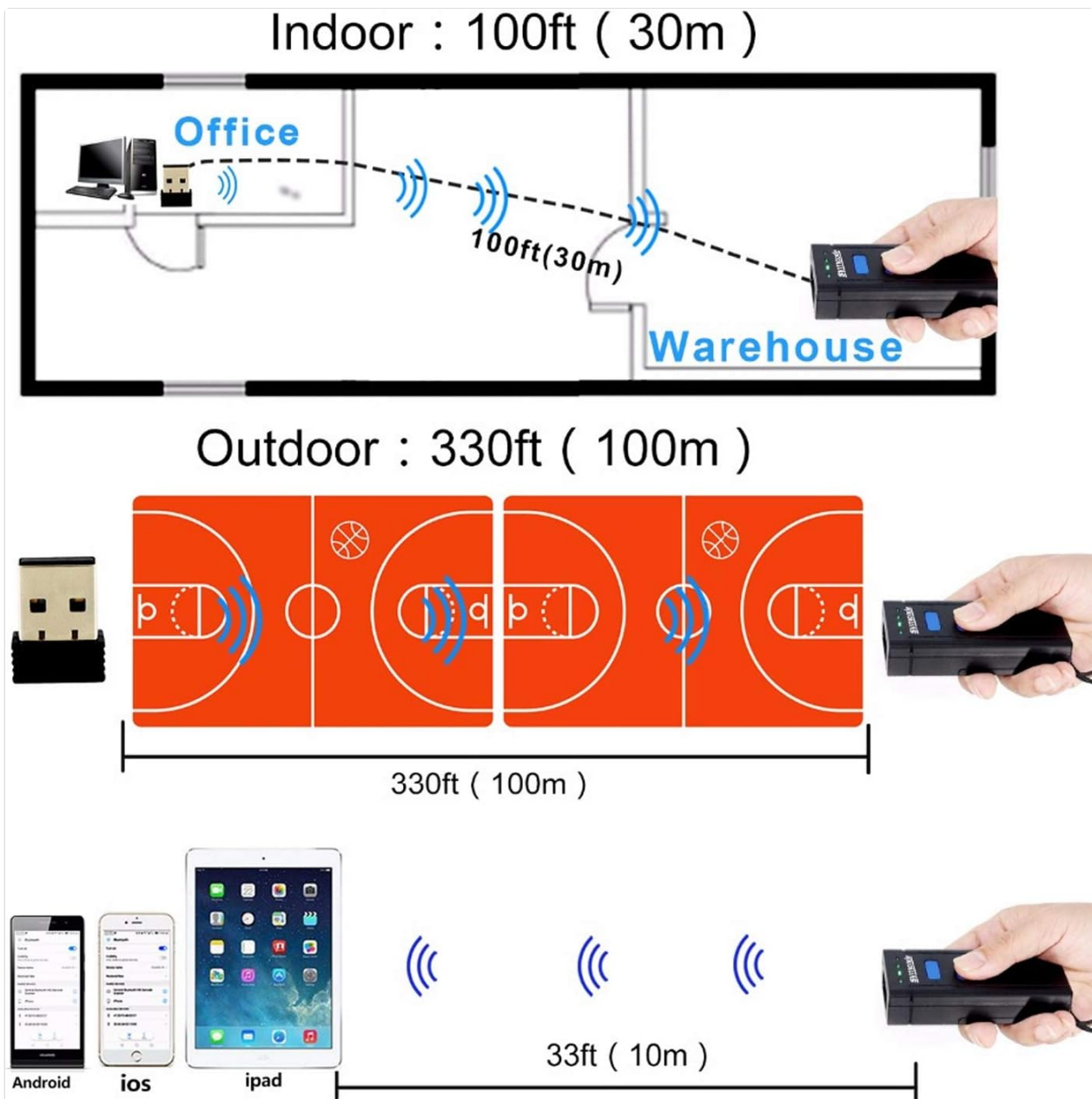


Figure 5: Bluetooth Compatibility. The scanner is depicted with wireless signals connecting to a laptop, smartphone, and tablet, indicating its Bluetooth compatibility across Windows, Apple, and Android operating systems.

1. Turn on the barcode scanner.
2. Long press the scan button for 8 seconds to activate Bluetooth pairing mode. The indicator light will flash.
3. On your smartphone, tablet, or laptop, go to Bluetooth settings and search for available devices.
4. Select the scanner (e.g., "Symcode Scanner") from the list to pair.
5. Once paired, the indicator light will turn solid, and the scanner is ready for use. No USB wireless receiver is needed for Bluetooth connections.

4.3 Wireless Range

Solutions to common problems

Step1:Factory restore



0B

Initialization



000601

Serial Mode

Step2:Continuous mode



013304

Auto Continuous Scan Mode

Step3:Pull up IOS keyboard and then double click the button



IOS keyboard double click show or hide

Step4:Turn the beep off



014200

Shut Sound



Bluetooth initialization

Note:Read the function code one by one

Figure 6: Wireless Range. A diagram illustrating the scanner's wireless range: up to 100 feet (30m) indoors for 2.4G wireless and up to 330 feet (100m) outdoors, and up to 33 feet (10m) for Bluetooth connections with mobile devices.

- **2.4G Wireless:** Up to 100 feet (30m) indoors, up to 330 feet (100m) outdoors.
- **Bluetooth:** Up to 33 feet (10m) with mobile devices.

5. OPERATING MODES

The scanner supports various operating modes to suit different needs:

5.1 Instant Upload Mode

Your browser does not support the video tag.

Video 2: 2 Types Upload Ways. This video demonstrates two methods of uploading scanned data: instant upload directly to a connected computer or mobile device, and storage mode where data is saved internally before being uploaded later.

In this mode, scanned barcode data is immediately transmitted to the connected device (PC, smartphone, tablet). This is ideal for real-time inventory management or POS transactions.

5.2 Storage Mode



Figure 7: Large Storage Capacity. The scanner is shown with an icon representing a floppy disk and "16M" text, indicating its 16MB storage capacity, capable of storing over 50,000 codes in storage working mode.

The scanner features 16MB of internal storage, capable of holding over 50,000 barcode entries. In storage mode, scanned data is saved internally and can be uploaded to your device later. This is useful when working out of range or when real-time transmission is not required.

5.3 Continuous Scanning Mode

Your browser does not support the video tag.

Video 3: Continuous Scanning Mode. This video demonstrates the continuous scanning mode of the barcode scanner, showing how it can rapidly scan multiple barcodes without requiring repeated button presses, ideal for high-volume tasks.

To activate continuous scan mode, scan the corresponding barcode from the 'Solutions to Common Problems' section (see Section 7.1). In this mode, the scanner will continuously emit its laser, allowing for rapid scanning of multiple items without pressing the trigger for each scan.

5.4 Handheld and Static Modes

Your browser does not support the video tag.

Video 4: Handheld and Static Scanning. This video illustrates the flexibility of the barcode scanner, demonstrating both handheld operation for individual scans and static mode when placed on its stand for hands-free scanning.

The scanner can be used in handheld mode for mobile scanning or placed on a compatible stand (if available) for static, hands-free operation, automatically scanning barcodes presented to it.

6. BASIC OPERATION

Support wired and wireless modes

Wired modes



Wireless modes

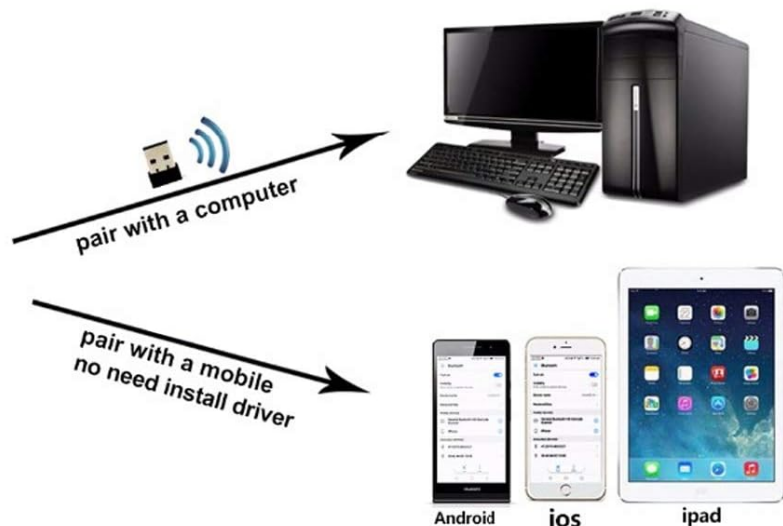


Figure 8: Scanning a Barcode. A hand holds the scanner, aiming its red laser at a barcode, demonstrating the scanning action.

1. Ensure the scanner is powered on and connected to your device via 2.4G wireless or Bluetooth.
2. Point the scan window at the barcode you wish to scan.
3. Press the scanning switch. A red laser line will appear.
4. Align the red laser line across the entire barcode.

5. Upon successful scan, the scanner will emit a beep (if not muted) and the indicator light will flash. The barcode data will appear on your connected device.

Your browser does not support the video tag.

Video 5: Scanning Various Barcodes. This video showcases the Symcode barcode scanner's ability to scan various 1D and 2D barcodes, including QR codes, and its seamless integration with different devices for data input.

7. ADVANCED SETTINGS AND TROUBLESHOOTING

The Symcode Mj-2877L can be configured using special barcodes found in the 'Solutions to Common Problems' section of the manual or via menu options on models with screens.



Figure 9: Configuration Barcodes. A series of barcodes labeled for specific functions: Factory Restore (0B Initialization), Serial Mode (000601), Auto Continuous Scan Mode (013304), iOS keyboard double click show or hide (%BT_Pads_En), Shut Sound (014200), and Bluetooth initialization. Users scan these barcodes to apply the settings.

7.1 Common Configuration Barcodes

Scan the following barcodes to apply specific settings:

- **Factory Restore:** Scan [0B Initialization](#) to reset the scanner to its default factory settings.

- **Serial Mode:** Scan [000601 Serial Mode](#) for serial data transmission.
- **Continuous Scan Mode:** Scan [013304 Auto Continuous Scan Mode](#) to enable continuous scanning.
- **iOS Keyboard Toggle:** Scan [%%BT_Pads_En iOS keyboard double click show or hide](#) to toggle the iOS virtual keyboard.
- **Turn Beep Off:** Scan [014200 Shut Sound](#) to mute the scanner's beep sound.
- **Bluetooth Initialization:** Scan [Bluetooth initialization](#) to re-initialize Bluetooth settings.

7.2 Advanced Menu Settings (if applicable)

Your browser does not support the video tag.

Video 6: Advanced Screen Features. This video highlights the advanced configuration options available through the scanner's menu, including settings for keyboard layout, encoding, sound, vibration, transport mode, and sleep time.

For models with an LCD screen, additional settings can be accessed directly through the menu. These may include:

- **Keyboard Layout:** Adjust for different regional keyboard layouts.
- **Encoding:** Select appropriate encoding (e.g., GBK, UTF) for data output.
- **Sounds:** Adjust volume and frequency of beeps.
- **Vibration:** Enable or disable vibration feedback.
- **Transport Mode:** Configure inventory and data upload settings.
- **Sleep Time:** Set the duration before the scanner enters sleep mode to conserve battery.

8. SPECIFICATIONS

Feature	Specification
Light Source	650nm~670nm visible laser
Scan Speed	200 scans/sec
Read Preciseness	0.1mm (4mil)
Print Contrast	30% min
Depth of Field	0~600mm (0.33mm, PCS 90%)
Scan Scope	10mm~250mm
Reading Distance	2.5~600mm (100% UPC/EAN)
Decode Capabilities	EAN-8/13, UPC-A/E, Code 39/93/128, EAN-128, Codabar, Industrial 2 of 5, Interleave 2 of 5, Matrix 2 of 5, MSI etc.
Bit Error Rate	1/5 million
Interface	Bluetooth 4.0, 2.4G Wireless
Battery	DC 3.7V, 1000mA Li-ion battery
Current	100mA (working), 30mA (storage)

Operating Temperature	0°C~45°C
Storage Temperature	-20°C~60°C
Humidity	5%~95% non-condensing
Product Dimensions	13.5 x 5.5 x 10.7 cm
Weight	149 g

9. MAINTENANCE


To ensure the longevity and optimal performance of your Symcode Mj-2877L barcode scanner, follow these maintenance guidelines:

- **Cleaning:** Use a soft, dry cloth to clean the scanner's exterior. For the scan window, use a lint-free cloth and a mild glass cleaner. Avoid abrasive materials or harsh chemicals.
- **Storage:** Store the scanner in a cool, dry place away from direct sunlight and extreme temperatures.
- **Battery Care:** Fully charge the battery before first use. If storing for extended periods, charge the battery every 3 months to prevent deep discharge.
- **Avoid Drops:** While durable, avoid dropping the scanner to prevent damage to internal components or the scan window.

10. WARRANTY AND SUPPORT

Your Symcode Mj-2877L barcode scanner comes with a manufacturer's warranty. Please refer to the warranty card included in your package for specific terms and conditions. For technical support, troubleshooting assistance, or warranty claims, please contact Symcode customer service through their official website or the contact information provided in your product packaging.

Related Documents - Mj-2877L

<div>2D Barcode Scanner User Manual</div> <div><div>BROCHURE</div><div></div></div>	<div>Symcode MJ-340 2D Barcode Scanner User Manual</div> <div>Comprehensive user manual for the Symcode MJ-340 2D Barcode Scanner, covering setup, performance specifications, communication modes, and configuration options.</div>
--	--

