

Schonbek 3572-26CL

Schonbek Signature 3572-26CL Renaissance Rock Crystal Chandelier Instruction Manual

Model: 3572-26CL

INTRODUCTION

This manual provides detailed instructions for the safe installation, operation, and maintenance of your Schonbek Signature 3572-26CL Renaissance Rock Crystal Chandelier. Please read all instructions carefully before beginning installation and retain this manual for future reference.

The Schonbek Renaissance Chandelier features a durable steel frame adorned with Heritage Handcut and Quartz Rock Crystals, designed and manufactured in the U.S.A. This fixture is intended for indoor use only.

1. SETUP AND INSTALLATION

Important Safety Information: Installation should be performed by a qualified electrician. Ensure power is turned off at the circuit breaker before installation. This fixture is designed to mount to an electrical box rated for 58 lbs (26.3 kg).

1.1 Unpacking and Inspection

Carefully unpack all components from the packaging. Verify that all parts listed in the included instruction sheets are present and undamaged. The package includes the lighting fixture, mounting hardware, instruction sheets, a manufacturer warranty certificate, and a certificate of authenticity.



Figure 1: Schonbek Renaissance Chandelier showcasing different crystal and finish options. The main image displays the chandelier with clear crystals and a French Gold finish.

1.2 Mounting the Fixture

1. Attach the mounting hardware to the electrical box according to the provided instruction sheets.
2. The chandelier is chain-suspended from a canopy. The included chain is 80 inches (203 cm) long and can be shortened or extended during installation. Additional chain is sold separately if a longer suspension is required.
3. The fixture includes 144 inches (366 cm) of total wire, allowing for a maximum suspension of up to 188.5 inches (479 cm) with additional chain.
4. This chandelier can be installed on a sloped ceiling, up to a 45-degree angle.

1.3 Electrical Connection

Connect the fixture's wiring to the household electrical supply as detailed in the instruction sheets. Ensure all connections are secure and comply with local electrical codes.

1.4 Bulb Installation

The chandelier requires 12 x E12 base, B10 shape 120V light bulbs (60W maximum each) and 1 x E12 base, T7 shape 120V light bulb (15W maximum). Incandescent or LED bulbs can be used (bulbs sold

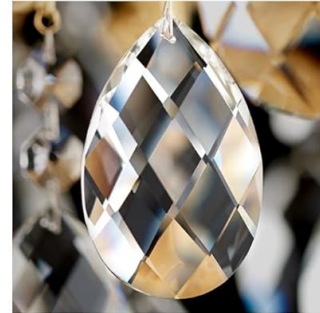
separately). Ensure bulbs are securely screwed into their sockets.

CRYSTAL SELECTIONS



HERITAGE HANDCUT CRYSTAL

Heritage Handcut® Crystal is hand-cut by craftsman using centuries-old techniques



QUARTZ ROCK CRYSTAL

Timelessly representing nature's artistic signature, Schonbek Quartz Crystal is crafted to enhance its natural splendor, luminosity and dazzling prismatic beauty



Figure 2: Detailed view of the Heritage Handcut Crystal and Quartz Rock Crystal components, highlighting their unique craftsmanship and natural beauty.

2. OPERATING INSTRUCTIONS

Once installed and powered, the chandelier can be operated using a standard wall switch. For dimming functionality, use a compatible dimmer switch to achieve smooth and continuous dimming. The control method for this fixture is touch-sensitive, implying compatibility with touch-sensitive dimmer switches or systems.



Figure 3: The Schonbek Renaissance Chandelier elegantly installed in a room, demonstrating its aesthetic appeal and illumination.

3. MAINTENANCE

Regular maintenance will ensure the longevity and beauty of your chandelier.

3.1 Cleaning the Fixture

- **Frame:** Dust the metal frame regularly with a soft, dry cloth. For more thorough cleaning, use a slightly damp cloth with mild soap, then dry immediately. Avoid abrasive cleaners or solvents.
- **Crystals:** The Heritage Handcut and Quartz Rock Crystals can be cleaned with a soft, lint-free cloth dampened with distilled water or a specialized crystal cleaner. Gently wipe each crystal to remove dust and smudges. Do not spray cleaner directly onto the fixture.

3.2 Bulb Replacement

Before replacing any bulbs, ensure the power to the fixture is turned off at the circuit breaker. Allow bulbs to cool completely before handling. Replace with bulbs of the correct type and wattage (12 x E12 base, B10 shape, 60W max; 1 x E12 base, T7 shape, 15W max).

4. TROUBLESHOOTING

If you experience issues with your chandelier, consult the following common troubleshooting steps:

- **No Light:**
 - Check if the circuit breaker is tripped.
 - Ensure the wall switch is in the "ON" position.
 - Verify that all bulbs are securely screwed in and not burnt out. Replace any faulty bulbs.
 - Confirm electrical connections are secure (consult a qualified electrician if unsure).
- **Flickering Lights:**
 - Ensure bulbs are fully tightened.
 - If using a dimmer, ensure it is compatible with the installed bulbs and fixture.
 - Check for loose wiring connections (consult a qualified electrician).
- **Dimming Issues:**
 - Ensure you are using a compatible dimmer switch.
 - Verify that the bulbs are dimmable.

For issues not resolved by these steps, please contact customer support.

5. PRODUCT SPECIFICATIONS

Brand	Schonbek
Model Number	3572-26CL
Product Dimensions	32"L x 32"W x 40"H (81.3 cm L x 81.3 cm W x 101.6 cm H)
Item Weight	58 Pounds (26.3 kg)
Material	Alloy Steel, Crystal, Glass
Finish Color	French Gold
Light Source Type	LED compatible (Incandescent also supported)
Number of Light Sources	12 (main) + 1 (accent)
Bulb Base	E12
Maximum Wattage (per bulb)	60 Watts (main), 15 Watts (accent)
Total Wattage	735 Watts (max)
Voltage	120 Volts
Brightness	5040 Lumens
Color Temperature	3000 Kelvin
Average Life	5000 Hours

Control Method	Touch (compatible with dimmers)
Special Features	Clear Heritage Handcut and Quartz Rock Crystals, Dimmable
Indoor/Outdoor Usage	Indoor use only
Assembly Required	Yes
Certifications	UL, cUL, CSA rated for indoor locations

6. WARRANTY INFORMATION

Your Schonbek Signature 3572-26CL Chandelier comes with a Manufacturer Warranty Certificate. Please refer to this certificate for specific terms, conditions, and duration of the warranty. Retain your proof of purchase for warranty claims.

7. CUSTOMER SUPPORT

For technical assistance, replacement parts, or any questions regarding your Schonbek chandelier, please contact Schonbek customer support. Refer to the contact information provided in your packaging or on the official Schonbek website. Your product also includes a Certificate of Authenticity.

You can also visit the [Schonbek Store on Amazon](#) for more information.