



[Manuals.plus](#) /

› [TDR FORCE](#) /

› TDRFORCE Bottled Water System User Manual

TDR FORCE BW4003A

TDRFORCE Bottled Water System Instruction Manual

Model: BW4003A | Brand: TDR FORCE

PRODUCT OVERVIEW

The TDRFORCE Bottled Water System is engineered to provide a reliable and convenient solution for dispensing potable water from 5-gallon commercial water bottles. This system is ideal for various applications, including connecting to refrigerators with ice makers and water dispensers, coffee brewers, and tea machines. Its compact design and robust features ensure a steady supply of water with minimal effort.



Figure 1: The TDRFORCE Bottled Water System connected to a standard 5-gallon water bottle, illustrating its primary function.

SAFETY INFORMATION

IMPORTANT: Always turn off the dispenser when changing water bottles to prevent accidental operation or spills.

WARNING: Do not use this pump in an explosive environment or where flammable vapors are present. Always read the entire instruction manual before operating the system.



Illuminated on/off switch, provides clear visibility in dark or hard-to-reach places

Figure 2: Close-up view of the pump module, highlighting the illuminated on/off switch and important warning labels for safe operation.

FEATURES

- **Professional Water Pump System:** Designed for convenience and portability, pumping recipe-quality water from 5-gallon commercial bottles.
- **Easy Installation:** Features quick-connect ports for rapid installation and replacement of suction and discharge tubing.
- **Quiet Operation:** Minimizes noise pollution with noise-dampening rubber feet.
- **Automatic Shut-off:** Unit shuts off when the water bottle is depleted and restarts automatically when the empty bottle is replaced with a full one.
- **Versatile Use:** Suitable for both cold and hot water applications.
- **Built-in Check Valve:** Prevents backflow, ensuring hygienic operation.
- **Food-Grade Materials & CE Certified:** Ensures safety and compliance with quality standards.

BOTTLE WATER PUMP SYSTEM

Feature:

1. Compact for easy installation
2. Automatic shut off when bottle is empty
3. Ideal for Coffee shop, Refrigerator dispensing system
4. A broad range of solutions for the food and beverage industry
5. Food Grade Materials/CE Certificate



Household Water Supply



Coffee/Commercial Water Supply



Recreational Vehicle
Water Supply



Camping / Outdoor Water Supply



Figure 3: Visual representation of the system's key features and diverse applications, including household, commercial, recreational vehicle, and camping water supply.

SETUP

Unpacking and Component Identification

Carefully remove all components from the packaging. Ensure all parts are present before proceeding with assembly.

New BW system consists of separate components



Assemble the components



Pump Module



Tube



Accessories

Figure 4: The system components laid out, including the pump module, water intake tube, power adapter, and various quick-connect fittings.

Assembly Steps

1. Connect the water intake tube to the 'IN' port on the pump module. Ensure a secure connection using the quick-connect fitting.
2. Connect the water output tube to the 'OUT' port on the pump module. This tube will lead to your appliance (refrigerator, coffee maker, etc.).
3. Insert the long end of the water intake tube into the 5-gallon water bottle. Ensure the buoy/float mechanism is free to move within the bottle.
4. Connect the power adapter to the 'DC IN' port on the pump module, then plug the adapter into a standard 120V AC wall outlet.

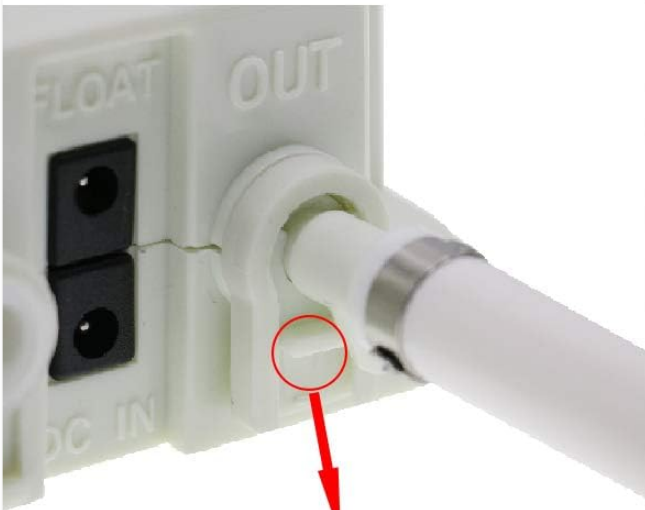
1



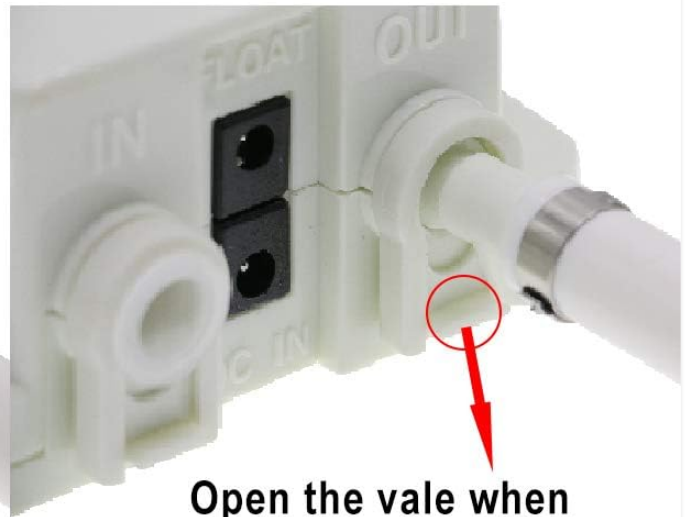
Install the hose inside

2

3



Close the valve



Open the valve when you pull the hose from pump

Figure 5: Detailed steps for connecting the hoses to the pump module, demonstrating the proper use of the quick-connect fittings and valve operation.

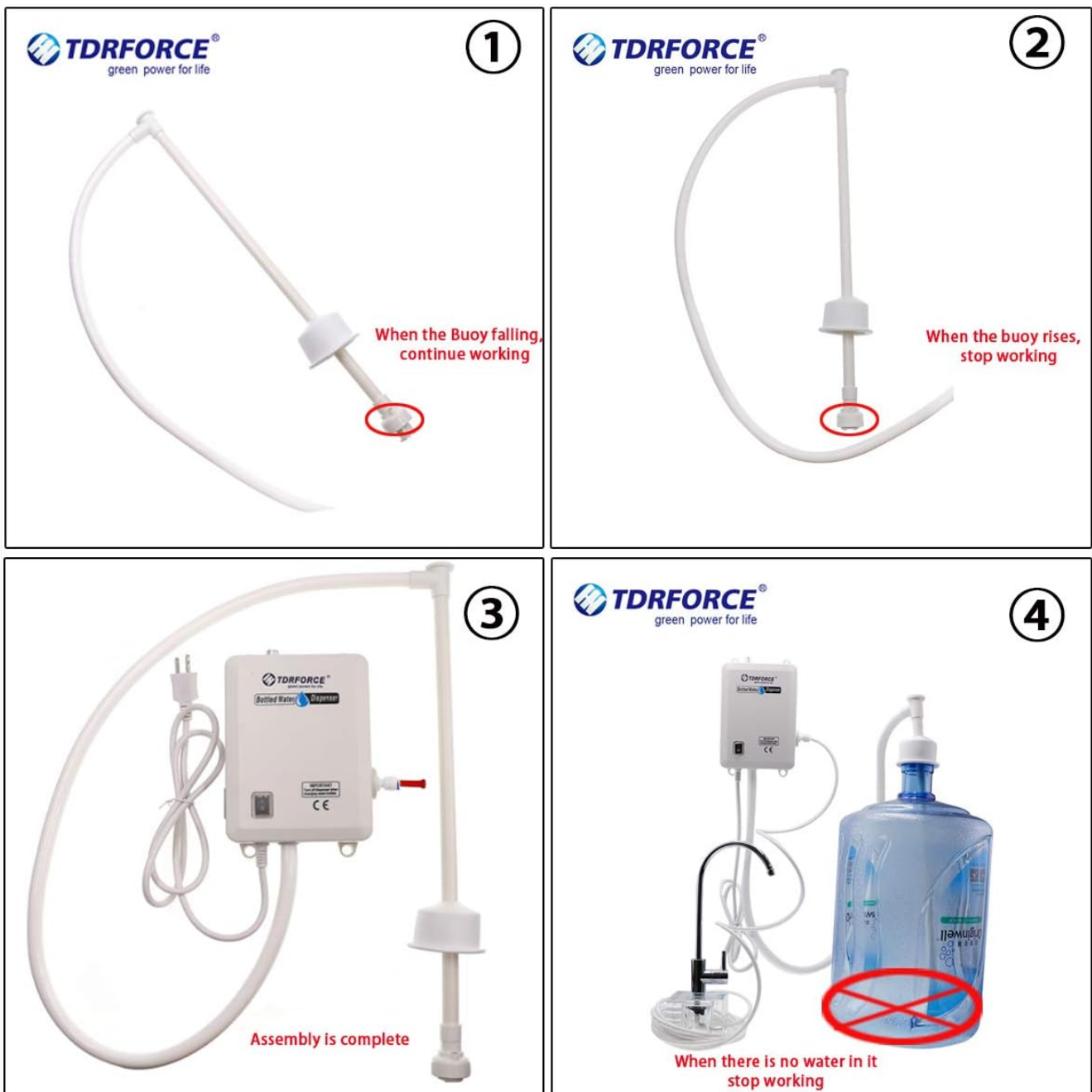


Figure 6: Illustration of the buoy's role in automatic operation and a visual of the fully assembled system ready for use.

INSTALLATION

The TDRFORCE Bottled Water System is designed for flexible installation, typically under a sink or in a cabinet adjacent to the appliance requiring water supply.

Connecting to Appliances

1. Identify the water inlet connection on your appliance (e.g., refrigerator ice maker, coffee machine).
2. Route the water output tube from the TDRFORCE pump module to the appliance's water inlet. Ensure the tubing is not kinked or pinched.
3. Securely connect the water output tube to the appliance's water inlet. Adapters may be required depending on your appliance's connection type.

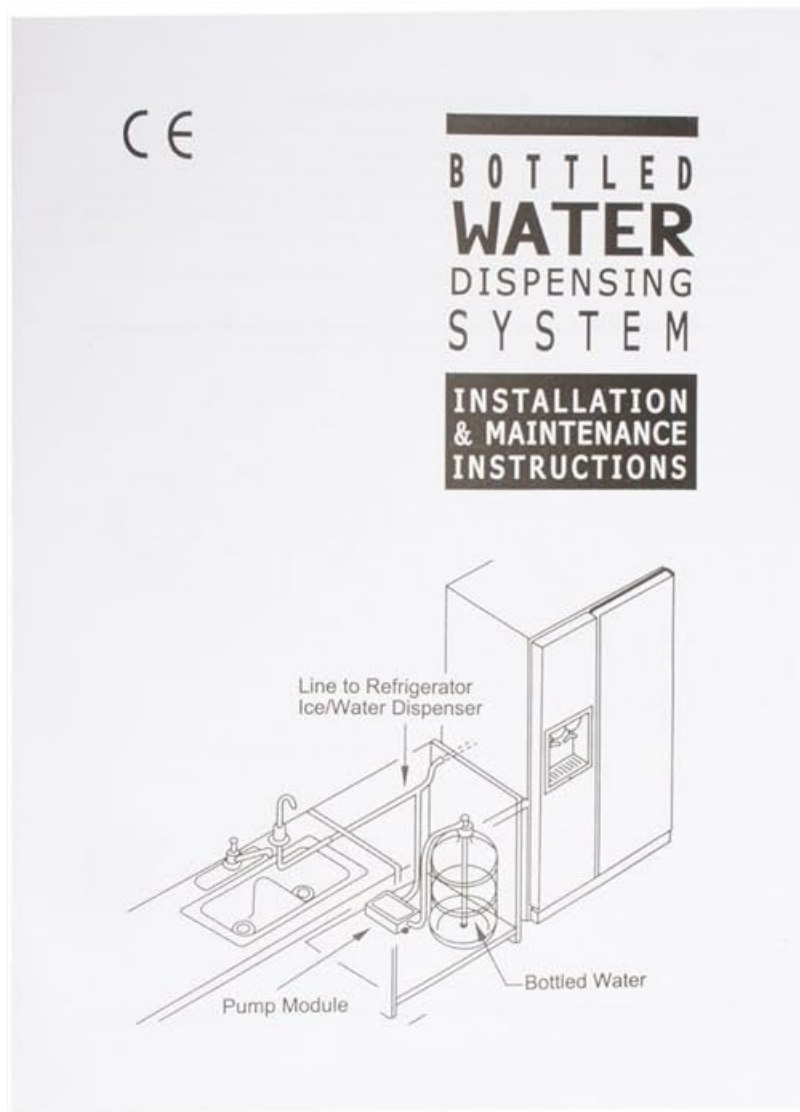


Figure 7: A schematic diagram showing a common installation scenario, with the pump module positioned near the bottled water and connected to a refrigerator's water line.

Typical Applications

- **Refrigerators with Ice Makers/Water Dispensers:** Provides a dedicated bottled water supply, bypassing household plumbing.
- **Coffee/Tea Machines:** Ensures consistent water quality for brewing.
- **Portable Water Stations:** Can be used in various settings where a direct water line is unavailable.

Available for use with coffee/tea machines, water dispensers, refrigerators, ice makers or any application where potable watered is needed



Figure 8: Examples of the system in use, showing its adaptability for different water dispensing needs.

OPERATING INSTRUCTIONS

1. Ensure the 5-gallon water bottle is full and the water intake tube is properly submerged.
2. Verify all connections are secure and leak-free.
3. Plug the power adapter into a 120V AC wall outlet. The illuminated on/off switch on the pump module will light up, indicating power is supplied.
4. Turn the pump module's on/off switch to the 'ON' position. The pump will activate and begin drawing water.
5. The system will automatically shut off when the water bottle is empty, indicated by the buoy/float mechanism.
6. To replace an empty bottle, turn the pump module's on/off switch to the 'OFF' position. Carefully remove the water intake tube from the empty bottle and insert it into a new, full bottle.
7. Turn the pump module's on/off switch back to the 'ON' position. The pump will restart automatically.

MAINTENANCE

- **Regular Cleaning:** Periodically inspect the water intake tube and pump connections for any mineral buildup or debris. Clean as necessary using mild soap and water.
- **Tubing Inspection:** Check the water tubing for any kinks, cracks, or signs of wear. Replace if damaged to ensure optimal performance and prevent leaks.
- **Buoy/Float Check:** Ensure the buoy/float mechanism inside the water bottle moves freely. A stuck buoy can prevent the automatic shut-off or restart function.
- **Power Cord Inspection:** Examine the power cord and adapter for any damage. Do not use if damaged.

TROUBLESHOOTING

Problem	Possible Cause	Solution
Pump not operating	No power; On/Off switch is OFF; Water bottle is empty; Loose connections.	Check power outlet; Turn switch ON; Replace water bottle; Secure all connections.
Low water flow	Kinked tubing; Partially empty bottle; Clogged intake tube.	Straighten tubing; Replace bottle; Clean intake tube.
Pump runs continuously	Buoy/float mechanism stuck; Leak in the system.	Check and free the buoy; Inspect all connections and tubing for leaks.
Unusual noise during operation	Air in the system; Pump not stable.	Allow pump to run for a short period to clear air; Ensure pump is on a flat, stable surface.

SPECIFICATIONS

Attribute	Detail
Model Number	BW4003A
UPC	709046066703
Power Source	Corded Electric (120V AC)
Wattage	55 watts
Capacity	Designed for 3.8 Liters (from 5-gallon bottles)
Material	Polyethylene (PE)
Color	White
Product Dimensions	10.33"D x 3.58"W x 23.56"H
Item Weight	3.3 pounds
Installation Type	Portable
Certifications	CE Certificate

WARRANTY AND SUPPORT

For specific warranty details and customer support, please refer to the documentation included with your purchase

or contact the manufacturer directly. Information regarding protection plans may also be available from your retailer.

Visit the official TDR FORCE Store for additional product information and support:[TDR FORCE Store](#)