

[Manuals.plus](#) /

› [ENEGON](#) /

› ENEGON LP-E5 Battery and Dual Charger User Manual

## ENEGON EN-LP-E5

# ENEGON LP-E5 Battery and Dual Charger User Manual

Model: EN-LP-E5

## INTRODUCTION

This manual provides essential instructions for the safe and efficient use of your ENEGON LP-E5 Replacement Battery (2-Pack) and Rapid Dual Charger. Please read this guide thoroughly before operation and retain it for future reference.

## IMPORTANT SAFETY INFORMATION

- Do not connect improperly.
- Do not dispose of in fire or expose to excessive heat.
- Do not crush, puncture, incinerate, or short circuit external contacts.
- Keep out of reach of children.
- Use only with compatible devices as specified.

## PACKAGE CONTENTS

Verify that all items are present in your package:

- 2 x ENEGON LP-E5 Replacement Batteries (1400mAh)
- 1 x Rapid Dual Battery Charger
- 1 x Micro-USB Cable

## What's in the box? Package contains

- ⦿ 2 x replacement batteries for canon LP-E5 1400mAh
- ⦿ 1 x DC Dual Battery Charger
- ⦿ 1x Micro USB Cable

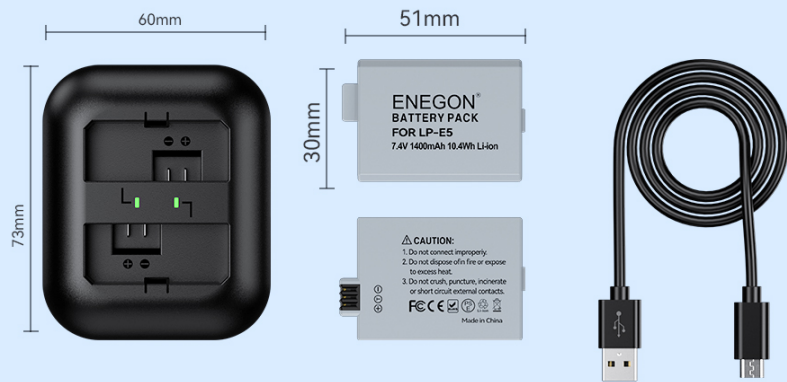


Image: Contents of the ENEGON LP-E5 battery and charger kit.

## SETUP AND FIRST USE

### 1. Charging the Batteries

1. Connect the provided Micro-USB cable to the charger and a USB power source (e.g., wall adapter, car charger, power bank, or computer USB port).
2. Insert the ENEGON LP-E5 batteries into the charging slots. Ensure correct orientation.
3. The LED indicator for each slot will turn **RED** to indicate charging is in progress.
4. When charging is complete, the LED indicator will turn **GREEN**.

## STEP 1



## STEP 2



## STEP 3



## STEP 4



Image: Visual guide for connecting the charger and inserting batteries.

1. When Charger is powered on, LED lights flash red and green alternately (without batteries)

2. LED lights turn to RED when charging and GREEN when complete

**ENEGON®**  
**BATTERY CHARGER**

Model: EN-LPE5  
Input: Micro USB 5V/2A  
Output: CHO1: 8.4V/0.8A  
          CHO2: 8.4V/0.8A  
Total output: 8.4V/1.6A

**WARNING:**  
To reduce the risk of fire or burns do not disassemble, crush, puncture, or short external contacts.

FC CE PS E  
MADE IN CHINA



Image: LED indicators on the charger showing charging (red) and fully charged (green) status.

## 2. Inserting Batteries into Your Camera

Refer to your Canon camera's instruction manual for specific steps on how to correctly insert the LP-E5 battery. Ensure the battery is fully charged before insertion.

# Compatible Models

EOS Rebel XS, Rebel T1i, Rebel XSi, 1000D, 500D, 450D, Kiss X3, Kiss X2, Kiss F Digital Camera and more



500D



Kiss X3



Rebel T1i



Rebel XS



Image: Compatible Canon camera models and ENEGON LP-E5 batteries.

## OPERATING INSTRUCTIONS

### Battery Usage

- The 1400mAh capacity provides extended shooting time for photos and videos.
- Always carry spare charged batteries for prolonged use.
- Monitor your camera's battery indicator to know when to replace or recharge batteries.

### Charger Functionality

- The rapid dual charger allows simultaneous charging of two LP-E5 batteries.
- The charger is designed with multiple circuit protections to prevent over-charging, short-circuiting, high-temperature, and surge damage.

# Continuous Stable Power

Advanced intelligent chip provides stable voltage to ensure shooting with high performance all the time.

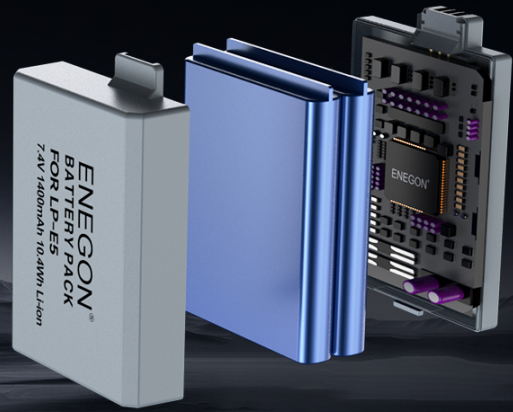
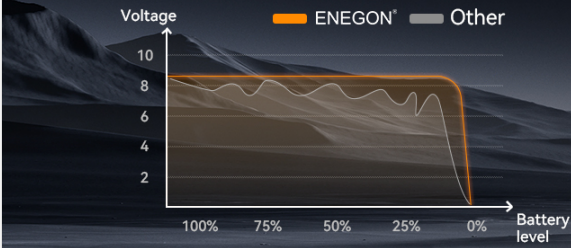


Image: Illustration of continuous stable power delivery from ENEGON batteries.

## Clear at a Glance

Showing the real-time charging status

Charging

Charging Complete

The charging indicator shows RED during charging and GREEN when fully charged

Image: Overview of built-in safety protections for the ENEGON charger.

## MAINTENANCE

- Store batteries in a cool, dry place away from direct sunlight and extreme temperatures.
- Avoid fully discharging batteries for extended periods to prolong their lifespan.
- Clean battery contacts and charger terminals periodically with a dry, soft cloth to ensure optimal connection.
- Do not attempt to disassemble the batteries or charger.

## TROUBLESHOOTING

Problem	Possible Cause	Solution
Battery not charging	Loose cable connection, faulty USB power source, incorrect battery insertion.	Ensure Micro-USB cable is securely connected. Try a different USB power source. Re-insert battery correctly.

Problem	Possible Cause	Solution
LED indicator not lighting up	No power to charger, charger malfunction.	Check power source. Try a different USB cable. Contact customer service if issue persists.
Battery not recognized by camera	Incorrect battery insertion, dirty battery contacts.	Ensure battery is fully seated in the camera. Clean battery contacts with a dry cloth.

## SPECIFICATIONS

Model Number	EN-LP-E5
Battery Type	Lithium Ion
Battery Capacity	1400 mAh
Battery Voltage	7.4 Volts
Charger Input	5V/2A
Charger Output	8.4V/0.8A*2
Compatible Camera Models	Canon EOS Rebel XS, Rebel T1i, Rebel XSi, 1000D, 500D, 450D, Kiss X3, KissX2, KissF

## WARRANTY AND CUSTOMER SUPPORT

ENEGON provides an **18-month manufacturer warranty** for this product. For any inquiries, technical assistance, or warranty claims, please contact our customer service team. We offer **24-hour customer service** to ensure your satisfaction.

For further assistance, please visit the official ENEGON store or contact your retailer.