



Manuals.plus /

› MiroPure /

› MiroPure Enhanced Hair Straightener Heat Brush (Model CS0523) - Instruction Manual

## MiroPure CS0523

# MiroPure Enhanced Hair Straightener Heat Brush (Model CS0523)

Instruction Manual

## PRODUCT OVERVIEW

The MiroPure Enhanced Hair Straightener Heat Brush is a 2-in-1 ceramic ionic straightening brush designed to provide a smooth, silky, and natural lustrous look to your hair. It features advanced MCH heating technology for quick heat-up and even temperature distribution, along with safety features like auto-off and auto temperature lock.



Figure 1: MiroPure Enhanced Hair Straightener Heat Brush. This image shows the overall design of the pink hair straightener brush with its black bristles and digital display.

## Key Features

- **Double Ionic Generator for Healthy Silky Hair:** This MiroPure Hair straightener brush gives your hair a smooth, silky, natural lustrous look by sealing the hair cuticles, thus reducing split ends and knotting. Get silky-looking natural and healthy hair, rather than a flat burnt look.
- **Auto-Off and Auto Temperature Lock:** Ensures maximum safety and optimum performance at all times. As a built-in safety feature, this hair straightener brush will automatically shut-off if not used for 60 minutes.
- **Simple to Operate and Travel-Friendly:** Straighten hair at home on your own easily at any angle with the 360-degree swivel power cord. In addition, you can take it with you anywhere to get smooth and silky hair in minutes, no matter where you are.
- **High Density Nano Comb Brush for Curly Hair:** Easily turn curly hair into straight hair in just minutes! Not only this, but this hair straightener provides a massaging effect that benefits the scalp and stimulates hair follicles.
- **New MCH Heating:** The MCH (Metal Ceramic Heater) gives even heat distribution and quick temperature recovery time. The adjustable heat temperature from 150°C (300°F) to 230°C (450°F) allows you to match your specific hair type: thin, fine, wavy or curled. In just one minute, it can heat up

to the desired temperature and offer great results.



Figure 2: Illustration of the double ionic generator feature. This image highlights the double ionic generator within the brush, showing ions being released to smooth hair.

## SAFETY INFORMATION

Please read all safety warnings before using the MiroPure Hair Straightener Heat Brush.

- **Burn Hazard:** Surfaces get extremely hot during use. Avoid contact with skin.
- **Electric Shock Risk:** Keep away from water. Do not use near bathtubs, sinks, or other water sources.
- **Fire Risk:** Unplug when not in use. Do not leave unattended when plugged in.
- Keep out of reach of children.

## PACKAGE CONTENTS

Your MiroPure Hair Straightener Heat Brush package includes:

- MiroPure Hair Straightener Heat Brush
- Heat-resistant glove

- Travel bag
- User Manual

## **SETUP**

1. Unpack the MiroPure Hair Straightener Heat Brush and all accessories.
2. Ensure the brush is clean and free from any debris.
3. Plug the power cord into a suitable electrical outlet (100V-240V compatible).
4. Place the brush on a heat-resistant surface.

## **OPERATING INSTRUCTIONS**

For optimal results, ensure your hair is completely dry and detangled before use.

### **Power On/Off and Temperature Adjustment**

1. Press and hold the power button (usually marked with a power symbol) for a few seconds to turn on the device. The digital display will show the current temperature.
2. Use the + and - buttons to adjust the temperature to your desired setting. Refer to the temperature guide below for recommendations.
3. The brush heats up quickly due to MCH heating technology. Wait for the temperature to stabilize.
4. To lock the temperature, press and hold both + and - buttons simultaneously. The lock symbol will appear on the display. Repeat to unlock.
5. The device features an automatic shut-off function after 60 minutes of inactivity for safety.

# 30S FAST HEATING & 60MIN AUTO-OFF

MCH Heating Technology

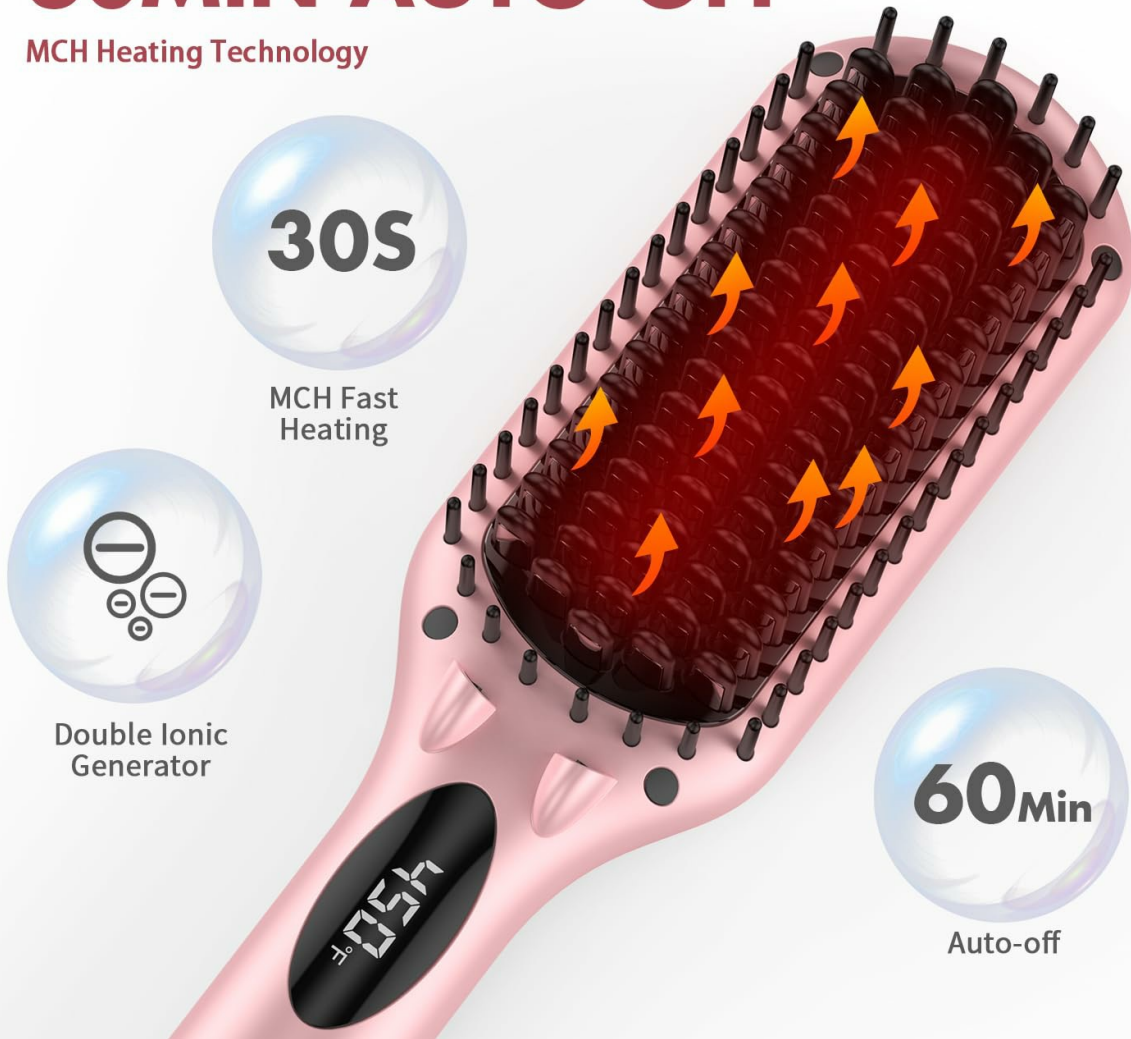


Figure 3: Features of the MiroPure brush including 30-second fast heating and 60-minute auto-off.

# FAST CERAMIC UNIFORM HEATING

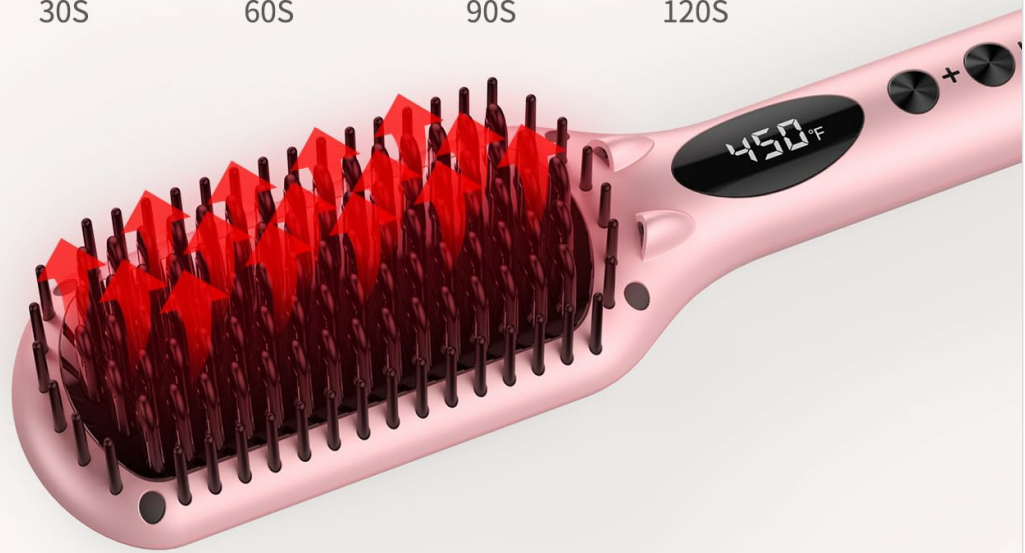
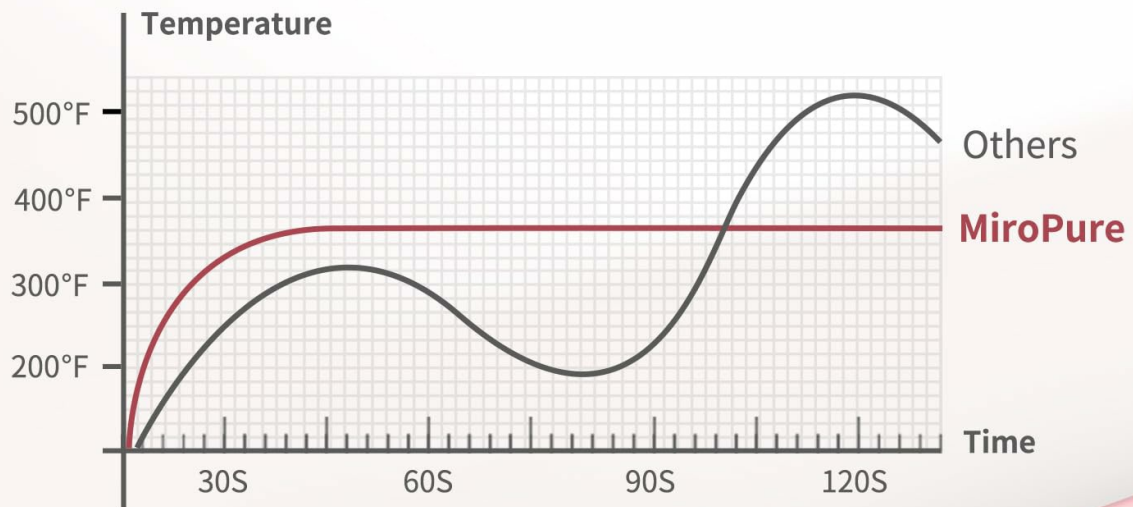


Figure 4: Graph illustrating the fast and uniform ceramic heating of the MiroPure brush compared to others.

## Recommended Temperature Settings

# 16 TEMPERATURE SETTING

170°F-450°F Perfect for all hair types, More style choice.

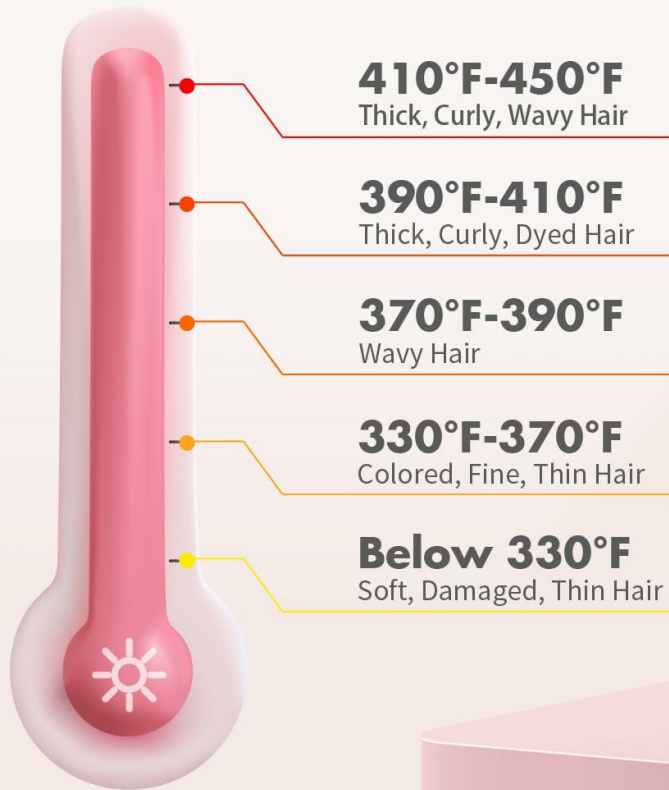


Figure 5: Visual guide for 16 temperature settings based on hair type.

Hair Type	Temperature Range
Thick, Curly, Wavy Hair	410°F-450°F
Thick, Curly, Dyed Hair	390°F-410°F
Wavy Hair	370°F-390°F
Colored, Fine, Thin Hair	330°F-370°F
Soft, Damaged, Thin Hair	Below 330°F

## How to Straighten Your Hair

1. Divide your dry, detangled hair into manageable sections.
2. For best results, use the provided heat-resistant glove on the hand holding the hair section.
3. Take a section of hair and slowly glide the brush from the roots to the tips, ensuring the hair passes through the bristles.

4. Repeat for each section until desired straightness is achieved. For very curly or thick hair, multiple passes may be necessary.
5. The double ionic generator helps to reduce frizz and add shine.



Figure 6: A visual comparison of hair before and after using the MiroPure straightener brush, showing a transition from dry messy to smooth silky hair.

Your browser does not support the video tag.

Video 1: Demonstration of the MiroPure Hair Straightener Brush in action, showing how to achieve beautiful straight hair quickly.

## Universal Voltage

The MiroPure Hair Straightener Heat Brush supports 100V-240V wide voltage, making it suitable for international travel.

# 100V-240V WIDE VOLTAGE CAN BE TAKEN TO ALL OVER THE WORLD



Figure 7: The MiroPure brush is shown with a universal voltage feature, indicating its suitability for travel.

## MAINTENANCE

1. Always unplug the device and allow it to cool completely before cleaning.
2. Use a soft, damp cloth to wipe down the exterior of the brush.
3. Use a small cleaning brush (not included, but often recommended) to remove any hair or product residue from between the bristles.
4. Do not use abrasive cleaners or immerse the device in water.
5. Store the brush in its travel bag in a cool, dry place.

## TROUBLESHOOTING

Problem	Possible Cause	Solution
Device not turning on	Not plugged in correctly; Power button not held long enough	Ensure plug is secure; Press and hold power button for 3-5 seconds
Not heating up	Device is off; Temperature setting too low	Turn on device; Increase temperature using + button
Hair not straightening effectively	Hair is wet; Sections too large; Temperature too low	Ensure hair is completely dry; Use smaller sections; Increase temperature
Temperature changes accidentally	Temperature lock is not activated	Activate temperature lock by pressing + and - simultaneously

If problems persist, please contact MiroPure customer support.

## SPECIFICATIONS

- **Model Number:** CS0523
- **Brand:** MiroPure
- **Material:** Ceramic
- **Color:** Pink
- **Product Dimensions:** 12.6 x 2.76 x 3.15 inches; 12.6 ounces
- **UPC/GTIN:** 754970038999
- **Product Benefits:** Straightening
- **Auto Shut-off:** 60 minutes
- **Temperature Range:** 150°C (300°F) to 230°C (450°F)
- **Voltage:** 100V-240V (Universal)

## WARRANTY AND SUPPORT

MiroPure products are designed for quality and durability. For warranty information, technical support, or customer service inquiries, please refer to the contact details provided in your product packaging or visit the official MiroPure website.