

NEEWER PT-176S

Neewer PT-176S On-Camera Video Light Instruction Manual

1. INTRODUCTION

Thank you for purchasing the Neewer PT-176S On-Camera Video Light. This compact and versatile LED panel is designed to provide continuous, balanced lighting for various photography and videography applications. Its dimmable output and filter options make it suitable for a wide range of creative needs. Please read this manual thoroughly before use to ensure proper operation and to maximize the product's lifespan.

2. PACKAGE CONTENTS

The Neewer PT-176S package includes the following items:

PACKAGE CONTENTS



1x LED Panel Light



1x Universal Base



1x Yellow Light Filter
1x Diffusion Filter

Image: Neewer PT-176S Package Contents, showing 1x LED Panel Light, 1x Universal Base, 1x Yellow Light Filter, and 1x Diffusion Filter.

- 1x Neewer PT-176S LED Panel Light
- 1x Universal Base (for hot shoe mount or 1/4-inch thread)
- 1x Yellow Light Filter
- 1x Diffusion Filter

Note: Power adapter, cord, and battery are not included.

3. PRODUCT FEATURES

- **176 Ultra-Bright LED Bulbs:** Provides a wider lighting range and illuminates a continuous daylight

balanced output at 5600K.

- **Dimmable Brightness:** Adjustable brightness from 10% to 99% via a dial.
- **Universal Use:** Mounts to any standard hot shoe on most DSLR or digital video cameras, tripods, and light stands equipped with a hot shoe mount or 1/4-inch thread.
- **Dual Power Options:** Can be powered via DC (power adapter not included) or Sony NP-F550/750/970 battery (not included).
- **Color Filters:** Includes transparent (diffusion) and orange (yellow light) filters to soften the light source and adjust color temperature.
- **Digital Display Screen:** Makes it easier for photographers to get accurate parameters.
- **Heat Dissipation:** Heat dissipation vents around the back panel reduce the risk of overheating during extended use.

EXCELLENT LIGHT PERFORMANCE

With diffusion filter and yellow light filter.

176Pcs
LED Quantity

11W Max
Output Power

1320lux at 0.5m
Max Illuminance

10%-99%
Dimmable Brightness

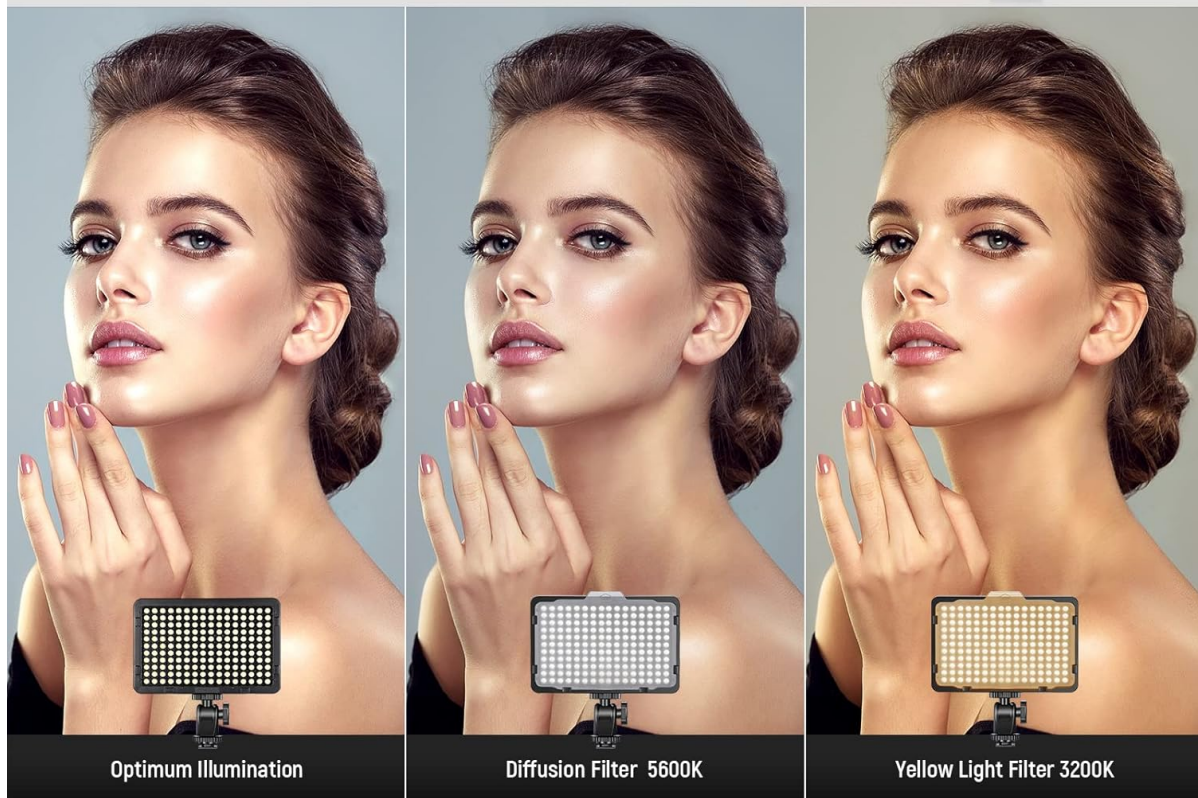
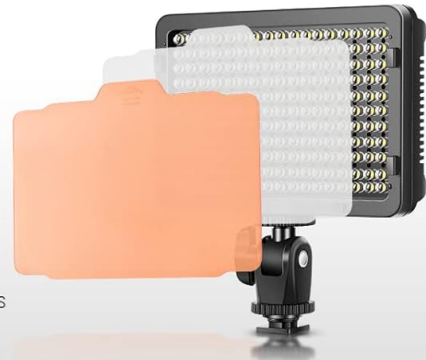


Image: Neewer PT-176S showcasing excellent light performance with diffusion and yellow light filters, 176 LEDs, 11W output, 1320lux at 0.5m, and 10%-99% dimmable brightness.

HEAT DISSIPATION

Heat dissipation vents around the back panel reduce the risk of overheating during extended use.



NOTE: Only the LED panel light is included.

Image: Neewer PT-176S highlighting heat dissipation vents on the back panel to prevent overheating.

4. SETUP

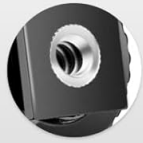
4.1 Battery Installation

1. Ensure the light is turned off.
2. Locate the battery compartment on the back of the LED panel.
3. Insert a compatible Sony NP-F550/750/970 battery (not included) into the compartment, ensuring correct polarity.
4. Close the battery compartment cover securely.

4.2 Mounting the Light

VERSATILE & FLEXIBLE USAGE

Adjustable adapter bracket achieves different lighting angle and multiple mounting options.



1/4" Screw Hole



Cold Shoe Base



on Camera



on Mini Tripod
(NEEWER T30)



on Light Stand

NOTE: Only the LED panel light is included.

Image: Neewer PT-176S showing various mounting options: on camera (hot shoe), on mini tripod (1/4" thread), and on light stand (1/4" thread).

1. Attach the universal base to the 1/4-inch thread on the bottom of the LED panel.
2. To mount on a camera: Slide the universal base's hot shoe mount into your camera's hot shoe and tighten the locking ring.
3. To mount on a tripod or light stand: Screw the universal base's 1/4-inch thread onto your tripod or light stand.
4. Adjust the angle of the light using the swivel head on the universal base.

5. OPERATING INSTRUCTIONS

PRODUCT DISPLAY



Image: NeeWER PT-176S back panel showing Power & Brightness Adjustment dial, Display Screen, Battery Installation slot, DC Power Interface, and Air Vents.

5.1 Power On/Off and Brightness Adjustment

1. To turn the light on: Long press the Power & Brightness Adjustment dial for more than 3 seconds. The digital display will show the current brightness level.
2. To adjust brightness: Rotate the dial clockwise to increase brightness (up to 99%) or counter-clockwise to decrease brightness (down to 10%).
3. To turn the light off: Long press the Power & Brightness Adjustment dial for more than 3 seconds.

5.2 Using Filters

1. The light comes with a transparent (diffusion) filter and an orange (yellow light) filter.
2. To attach a filter: Slide the desired filter into the slots on the front of the LED panel.
3. The transparent filter softens the light, while the orange filter changes the color temperature to approximately 3200K for warmer tones.

6. POWER OPTIONS



Image: Neewer PT-176S illustrating dual power options: compatible with NP-F550/750/970 battery (not included) or DC power adapter (not included).

- **Battery Power:** The light supports Sony NP-F550/750/970 series batteries (not included). Ensure the battery is fully charged before use.
- **DC Power:** The light can also be powered by a DC 6.5V-17V power adapter (not included). Connect the adapter to the DC Power Interface on the back of the light.

7. HEAT DISSIPATION

The Neewer PT-176S is designed with heat dissipation vents located around the back panel. These vents help to effectively dissipate heat generated during operation, reducing the risk of overheating and ensuring stable performance during extended use.

8. SPECIFICATIONS

Specification	Value
Model	PT-176S

LED Quantity	176 pieces
Output Power	11W
Luminous Flux	1320LM
Color Temperature	5600K (with transparent filter), 3200K (with orange filter)
Dimmable Range	10% - 99%
Input Voltage	DC 6.5V-17V
Applicable Battery	Sony NP-F550/750/970 series (not included)
Product Dimensions	6 x 6 x 2 inches
Item Weight	4.5 ounces

9. TROUBLESHOOTING

- **Light does not turn on:** Ensure the battery is correctly installed and charged, or that the DC power adapter is properly connected and supplying power.
- **Inconsistent light output:** Check that the filters are correctly seated and not obstructing the LEDs.
- **Light flickers:** This may indicate a low battery. Replace or recharge the battery, or connect to a stable DC power source.

10. MAINTENANCE

- Clean the LED panel with a soft, dry cloth. Avoid using harsh chemicals or abrasive materials.
- Store the light in a dry, cool place away from direct sunlight and moisture when not in use.
- Remove the battery if the light will not be used for an extended period to prevent battery discharge or leakage.

11. WARRANTY AND SUPPORT

For warranty information and customer support, please refer to the documentation included with your product or visit the official NEEWER website. Keep your purchase receipt as proof of purchase for any warranty claims.