

[Manuals.plus](#) /

› [SHIMANO](#) /

› SHIMANO Sedona FI 1000 Spinning Reel User Manual

SHIMANO Sedona FI 1000

SHIMANO Sedona FI 1000 Spinning Reel User Manual

Model: Sedona FI 1000

[Introduction](#)

[Features](#)

[Setup](#)

[Operation](#)

[Maintenance](#)

[Troubleshooting](#)

[Specifications](#)

[Warranty](#)

[& Support](#)

1. INTRODUCTION

This manual provides instructions for the proper use and maintenance of your SHIMANO Sedona FI 1000 spinning reel. The Sedona FI series incorporates advanced SHIMANO technologies, including HAGANE gears, for enhanced power and durability. This reel is designed for various fishing environments, including lakes, rivers, and inshore areas.



Figure 1: SHIMANO Sedona FI 1000 Spinning Reel, front view.

2. KEY FEATURES

The Sedona FI 1000 spinning reel is equipped with several features designed to improve your fishing experience:

- **HAGANE Gear:** Provides enhanced durability and smooth, powerful reeling performance.
- **Propulsion Line Management System:** Designed to increase casting distance and prevent backlashes and wind knots.
- **G-Free Body:** Shifts the reel's center of gravity closer to the rod, reducing fatigue and improving casting comfort.
- **Rust Resistant:** Components are designed to resist corrosion, extending the reel's lifespan.
- **Ambidextrous Handle:** The handle can be configured for both right-handed and left-handed retrieve.

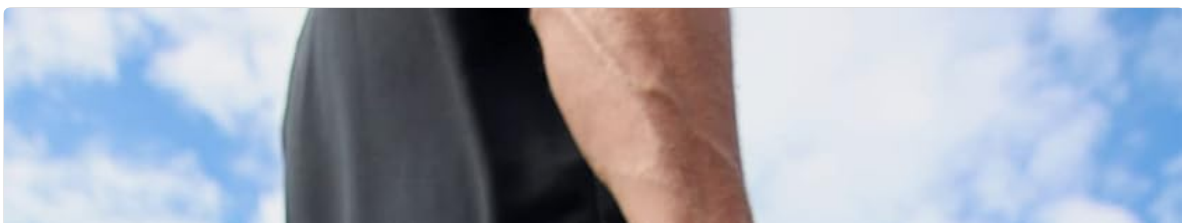




Figure 2: Side view of the Sedona FI 1000 reel, showcasing its design.

3. SETUP

3.1 Attaching the Reel to a Fishing Rod

1. Loosen the reel seat nut on your fishing rod.
2. Place the reel foot into the reel seat.
3. Tighten the reel seat nut securely until the reel is firmly attached to the rod. Do not overtighten.

3.2 Handle Installation

The Sedona FI 1000 reel features an ambidextrous handle for left or right-hand retrieve.

1. Unscrew the handle cap on the side opposite to your desired retrieve hand.
2. Insert the handle shaft into the main gear opening on your preferred side.
3. Screw the handle cap onto the opposite side to secure the handle.



Figure 3: Reel with handle installed, ready for use.

3.3 Spooling Fishing Line

Proper line spooling is crucial for optimal casting performance and to prevent line issues. The Propulsion Line Management System aids in this process.

1. Open the bail arm.
2. Tie the fishing line to the spool using an arbor knot or similar secure knot.
3. Close the bail arm.
4. Hold the line under slight tension and begin reeling slowly, ensuring the line lays evenly on the spool.
5. Fill the spool to approximately 1/8 inch (3mm) from the rim. Overfilling or underfilling can affect casting and lead to tangles.



Figure 4: Close-up of the spool, illustrating proper line capacity.

4. OPERATING INSTRUCTIONS

4.1 Casting

1. Hold the rod and reel comfortably.
2. Press the line against the rod with your index finger.
3. Open the bail arm.
4. Swing the rod forward, releasing your finger from the line at the desired point in the cast.
5. As the lure or bait approaches the water, gently feather the line with your finger to control the cast and prevent backlash.
6. Close the bail arm manually or by turning the handle.

4.2 Retrieving

Turn the handle to retrieve the line. The HAGANE Gear system ensures a smooth and efficient retrieve.

4.3 Drag Adjustment

The drag system controls the amount of resistance the reel applies to a fish pulling line. Adjust the drag knob on the front of the spool.

- Turn the drag knob clockwise to increase drag tension.
- Turn the drag knob counter-clockwise to decrease drag tension.
- Set the drag to approximately 25-30% of your line's breaking strength. This allows the line to pay out before breaking under heavy strain.



Figure 5: Reel with the drag adjustment knob visible on the spool.

5. MAINTENANCE

Regular maintenance ensures the longevity and optimal performance of your Sedona FI 1000 reel.

5.1 Cleaning

- After each use, especially in saltwater, rinse the reel with fresh water. Do not submerge the reel.
- Wipe the reel dry with a soft cloth.
- Clean any visible dirt or debris from the spool, bail, and handle.

5.2 Lubrication

- Periodically apply a small amount of reel oil to moving parts such as the handle knob and bail arm pivot points.
- Consult a professional for internal lubrication or complex maintenance.

5.3 Storage

Store your reel in a dry, cool place away from direct sunlight and extreme temperatures.

6. TROUBLESHOOTING

Problem	Possible Cause	Solution
---------	----------------	----------

Problem	Possible Cause	Solution
Line tangles or bird's nests during casting.	Overfilled spool, improper casting technique, line twist.	Reduce line on spool, practice casting, remove line twist by trailing line behind a boat or letting it unspool in current.
Drag slips or is inconsistent.	Drag washers are dry, dirty, or worn; drag not properly adjusted.	Clean and re-lubricate drag washers (if comfortable), adjust drag knob. If problem persists, seek professional service.
Reel feels rough or grinds during retrieve.	Internal gears are dirty, damaged, or lack lubrication.	Clean and lubricate external moving parts. For internal issues, professional service is recommended.

7. SPECIFICATIONS

Feature	Detail
Brand	SHIMANO
Model Name	SEDONA FI 1000
Model Number	SE1000FI
Hand Orientation	Ambidextrous
Item Weight	0.1 Kilograms (approximately 3.5 oz)
Gear Ratio	5.0:1
Max Drag	7 Pounds
Line Retrieve Per Turn	26 Inches
Line Capacity (Mono)	2lb/270yds, 4lb/140yds, 6lb/110yds
Material	Blend (Handle: Aluminum)
Special Features	HAGANE Gear, Propulsion Line Management System, G-Free Body, Rust Resistant

8. WARRANTY & SUPPORT

8.1 Warranty Information

The SHIMANO Sedona FI 1000 spinning reel is covered by a manufacturer's warranty. For specific details regarding warranty terms, conditions, and duration, please refer to the official SHIMANO website or contact SHIMANO customer service directly. Proof of purchase may be required for warranty claims.

8.2 Customer Support

For technical assistance, spare parts, or service inquiries, please visit the official SHIMANO website or contact their customer support department. Contact information can typically be found on the manufacturer's website or product packaging.

SHIMANO Official Website: <https://fish.shimano.com/>

