

eXuby EXBNEDIM3-2

eXuby Diamond Tip Record Player Needle Replacement Instruction Manual

Model: EXBNEDIM3-2

1. INTRODUCTION

This manual provides instructions for the eXuby Diamond Tip Record Player Needle Replacement, Model EXBNEDIM3-2. This product is designed to replace worn-out needles in compatible record players, offering improved sound quality and extended record life. Each package contains three premium diamond tip needles.



Image 1.1: A single eXuby diamond tip record player needle, shown in a gold-colored cartridge with a pink diamond stylus.

2. COMPATIBILITY

Before installation, it is crucial to visually compare and measure your current needle against the provided dimensions and images to ensure compatibility with your record player's stylus. Incompatibility can lead to poor performance or damage to your records.

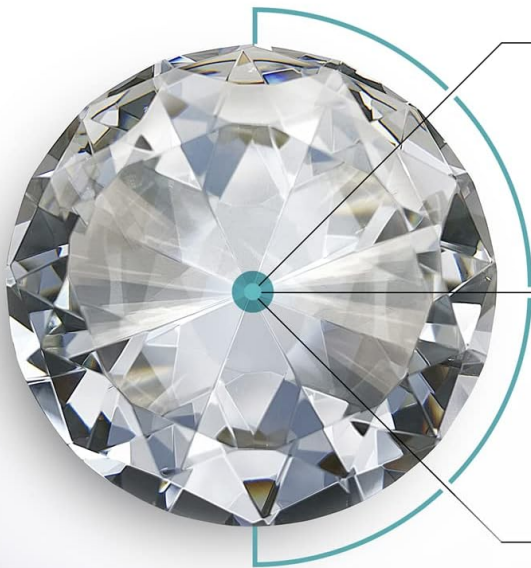
Needle Dimensions:

- Length: 18mm
- Front Width: 9mm
- Rear Width: 10mm
- Front Height: 3mm
- Rear Height: 4mm

Some Compatible Models Include:

- **CROSLEY:** CR6019A, CR8005A, CR6230A, CR7008A, CR6017, CR49, CR248 NP1, NP6 CR6251A-BK, CR66, Cr8005a, CR6020A
- **VICTROLA:** Suitcase Record Players, ITUT-420, VTA-750B
- **ION:** Compact LP, Max LP, Ion Air
- **TEAC:** GF-550, SL-A100
- **JENSEN:** JTA-220, JTA-460, JTA-475B, JTA-220A, JTA-222, JTA-230, JTA-300, JTA-410, JTA-470
- **ALL TECHPLAY Turntables**
- **eXuby:** EXBTB1, EXBTB2
- **Boytone:** BT-17DJB, BT17DJM, BT-17DJS, BT-19DJB, BT-19DJM, BT-19DJS, BT-16DJB, BT-17TB, BT-17TBC and more

SUPERIOR **DIAMOND TIP** RECORD PLAYER NEEDLE



SUPERIOR SOUND

PRESERVES RECORDS

LONG LASTING



Image 2.1: A graphic highlighting the benefits of a diamond tip needle: superior sound, preservation of records, and long-lasting performance. A diamond graphic is shown next to a record player.

3. INSTALLATION

The eXuby Diamond Tip Needle is designed for quick and tool-free installation. Follow these steps to replace your record player's needle:

1. Gently grasp the old needle cartridge and pull it away from the tonearm. It should detach with minimal force.
2. Align the new eXuby diamond needle with the slot on the tonearm.
3. Carefully push the new needle into place until it snaps securely. Ensure it is firmly seated.



Image 3.1: A hand demonstrating the removal or installation of a record player needle from a tonearm.

4. OPERATION

Once installed, the eXuby Diamond Tip Needle functions as the primary component for reading the grooves of your vinyl records. Ensure the record player's tonearm is properly balanced and the tracking force is set according to your record player's specifications for optimal sound reproduction and minimal record wear.

5. MAINTENANCE

Regular maintenance of your record player needle is essential for preserving both sound quality and the longevity of your vinyl records. A diamond tip needle provides superior durability compared to ordinary needles.

- **Needle Lifespan:** Diamond needles can maintain quality sound for up to 1000 hours of playback. In contrast, ordinary needles may dull after approximately 100 hours.
- **Record Protection:** A worn or dull needle can damage the grooves of your records, leading to irreversible sound degradation. Replacing your needle regularly helps protect your valuable vinyl collection.

- **Cleaning:** Periodically clean the needle tip with a soft brush designed for stylus cleaning to remove dust and debris.

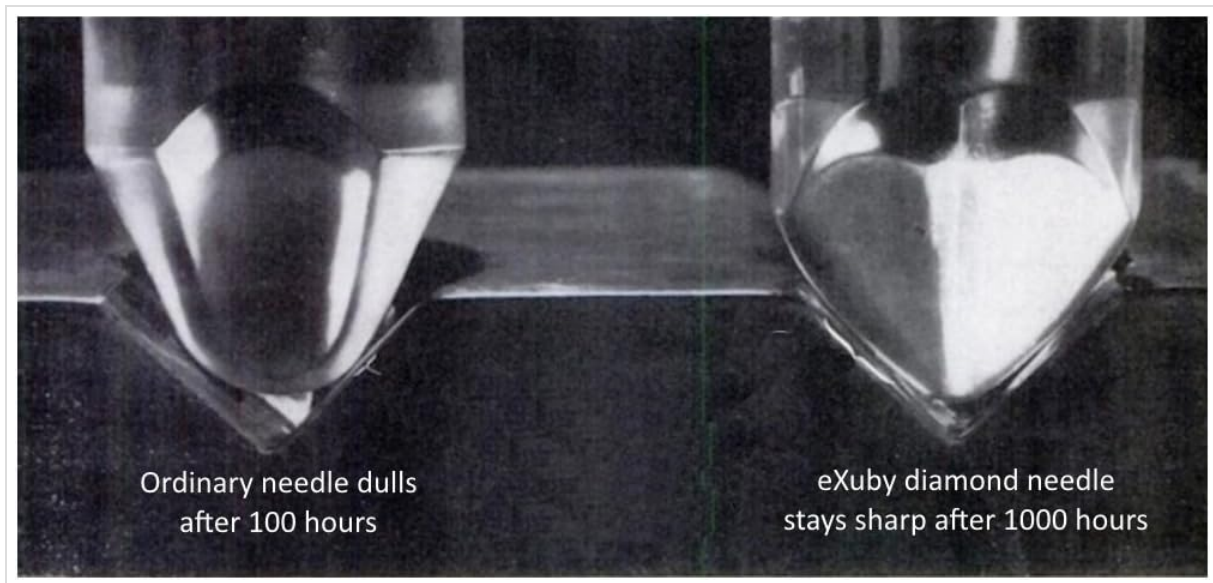


Image 5.1: A magnified comparison showing an 'Ordinary needle' that dulls after 100 hours on the left, and an 'eXuby diamond needle' that stays sharp after 1000 hours on the right, illustrating the difference in wear.

6. SPECIFICATIONS

Product Specifications:

- **Stylus Needle Type:** Diamond Tip
- **Construction:** High-Grade ABS Plastic Composites
- **Compatible Record Speeds:** 33 rpm, 45 rpm, & 78 rpm

Technical Specifications:

- **Needle Material:** Red diamond tipped needle
- **Arm Material:** Aluminum
- **Needle Pressure:** 5 grams (recommended range: 4-6 grams)
- **Output Voltage:** (at 1K Hz=3.54cm/sec) = 250 mV
- **Channel Distortion:** (at 1k Hz) = 3 dB
- **Channel Separation:** (at 1k Hz) = 15 dB
- **Frequency Response:** 80-10000 Hz (± 7 dB)

General Product Information:

- **Item Weight:** 0.64 ounces
- **Package Dimensions:** 6.1 x 4.02 x 0.2 inches
- **Item Model Number:** EXBNEDIM3-2
- **Date First Available:** February 24, 2017

7. PACKAGE CONTENTS

The eXuby Diamond Tip Record Player Needle Replacement package includes:

- 3x Premium Diamond Tip Needles

EXBNEDIM*3

eXuby

Premium Diamond head Stylus Needle replacement.

For upgrade of most supplied starter needles.



3pcs

For upgrade of most supplied starter needles.

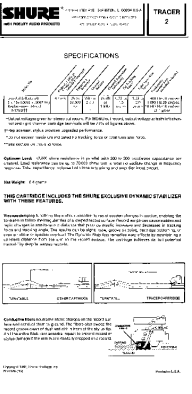
Image 7.1: The retail packaging for the eXuby 3-pack of Premium Diamond head Stylus Needle replacements, showing

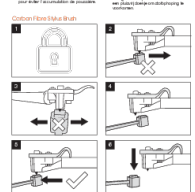
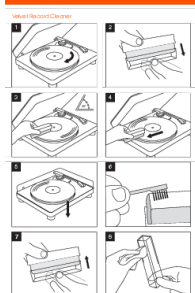
three needles visible through the blister pack.

8. SUPPORT

For further assistance or inquiries regarding your eXuby Diamond Tip Record Player Needle Replacement, please refer to the official eXuby website or contact their customer support directly. Contact information can typically be found on the product packaging or the brand's official online presence.

Related Documents - EXBNEDIM3-2

 <p>The image shows the first page of a technical document for the Shure Tracer 2 cartridge. It includes the Shure logo, the model name 'TRACER 2', and a table of specifications. The specifications table lists various parameters such as frequency response, output, and impedance. Below the table, there are sections for 'Specifications', 'Mounting', and 'Operation'. The 'Mounting' section includes a diagram showing the correct way to install the cartridge on a turntable. The 'Operation' section provides instructions on how to use the cartridge and maintain its performance.</p>	<p>Shure Tracer 2 Cartridge: Specifications, Mounting, and Operation Guide</p> <p>Comprehensive guide to the Shure Tracer 2 phono cartridge, covering specifications, mounting instructions, dynamic stabilizer features, stylus care, and warranty information.</p>
	<p>SPINCARE 2-IN-1 Velvet Record Brush: User Instructions</p>



Obegränsad, för obegränsad användning
Svartvit, A4, 80 g/m²

OBEGRÄNSAD

ERICA
Energy and Environment

Comprehensive instructions for using the SPINCARE 2-IN-1 Velvet Record Brush and Carbon Fibre Stylus Brush for optimal record and stylus cleaning.

Victrola Navigator VTA-600B.2 Instruction Manual: Setup, Operation, and Features

Comprehensive instruction manual for the Victrola Navigator VTA-600B.2 turntable. Learn how to set up, operate, and troubleshoot your 8-in-1 music center with Bluetooth, CD, cassette, radio, and more.

OBEGRAENSAD Record Player - User Manual and Setup Guide

Comprehensive guide for setting up and using the OBEGRAENSAD record player by IKEA.
Includes installation, operation, cleaning, and safety instructions.



VICTROLA

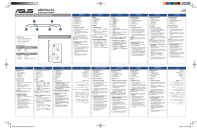


THE
NAVIGATOR

Model: VTA-600B.2
©2003 Victrola, Inc.
All rights reserved. Printed in the USA.

[Victrola VTA-600B.2 The Navigator Instruction Manual](#)

Comprehensive instruction manual for the Victrola VTA-600B.2 'The Navigator' record player system, covering setup, operation, features, maintenance, troubleshooting, and warranty information.



[ASUS Pen 2.0 \(SA203H\) Active Stylus: Quick Start Guide](#)

Get started with your ASUS Pen 2.0 (SA203H) Active Stylus. This guide covers package contents, LED indicators, hardware interface, charging, and Bluetooth pairing instructions.