

## Manuals+

[Q & A](#) | [Deep Search](#) | [Upload](#)

[manuals.plus](#) /

› [Remington](#) /

› [Remington CI41T1 Professional 2-in-1 Plate Guided Hair Curler & Touch Up Straightener User Manual](#)

## Remington CI41T1

# Remington CI41T1 Professional 2-in-1 Plate Guided Hair Curler & Touch Up Straightener User Manual

Model: CI41T1

Brand: Remington

## INTRODUCTION

---

Welcome to the user manual for your Remington CI41T1 Professional 2-in-1 Plate Guided Hair Curler & Touch Up Straightener. This versatile styling tool is designed to help you achieve beautiful waves, curls, and touch-up straight styles with ease. Featuring floating ceramic plates for consistent heat and minimal hair damage, along with cool-touch ends for safe handling, this manual will guide you through its features, setup, operation, and maintenance to ensure optimal performance and longevity of your device.



Image: The Remington CI41T1 Professional 2-in-1 Plate Guided Hair Curler & Touch Up Straightener, showcasing its sleek black and purple design.

## IMPORTANT SAFETY INFORMATION

---

Please read all instructions carefully before using this appliance. When using electrical appliances, especially when children are present, basic safety precautions should always be followed, including the following:

- **DANGER:** As with most electrical appliances, electrical parts are electrically live even when switch is off. To reduce the risk of death by electric shock:
  - Always unplug this appliance immediately after using.
  - Do not use while bathing or in a shower.
  - Do not place or store this appliance where it can fall or be pulled into a tub or sink.
  - Do not place in or drop into water or other liquid.
  - If an appliance falls into water, unplug it immediately. Do not reach into the water.
- **WARNING:** To reduce the risk of burns, electrocution, fire, or injury to persons:
  - This appliance should never be left unattended when plugged in.

- Close supervision is necessary when this appliance is used by, on, or near children or invalids.
- Use this appliance only for its intended use as described in this manual. Do not use attachments not recommended by the manufacturer.
- Never operate this appliance if it has a damaged cord or plug, if it is not working properly, or if it has been dropped or damaged, or dropped into water.
- Keep the cord away from heated surfaces. Do not wrap the cord around the appliance.
- Never use while sleeping.
- Never drop or insert any object into any opening.
- Do not use outdoors or operate where aerosol (spray) products are being used or where oxygen is being administered.
- Do not use an extension cord with this appliance.
- This appliance is hot when in use. Do not let eyes or bare skin touch heated surfaces.
- Do not place the heated unit directly on any surface while it is hot or plugged in.
- Always store this appliance and cord in a moisture-free area.
- Do not plug or unplug this appliance when your hands are wet.
- The appliance has cool-touch ends for safe handling during styling.

## SETUP

---

1. Unpack the Remington CI41T1 and remove all packaging materials.
2. Ensure the appliance is clean and free from any debris.
3. Plug the swivel fabric cord into a standard electrical outlet. The LED power indicator will illuminate.
4. Allow the device to heat up for approximately 30 seconds.
5. Select your desired heat setting using the HI/LO/OFF switch:
  - **HI (410°F):** Recommended for thicker hair.
  - **LO (350°F):** Recommended for thinner hair.



Image: Top view of the Remington CI41T1, highlighting the HI/LO/OFF switch for temperature selection.

## OPERATING INSTRUCTIONS

---

The Remington CI41T1 is designed for both curling and straightening. Always ensure your hair is clean and dry before styling.

### Curling Hair (Waves & Curls)

---

1. Section your hair into manageable 1-inch sections. Use hair clips to hold the unstyled sections away.
2. Take one 1-inch section of hair and guide it through the iron until it is between the heating plates.
3. Hold the end of the hair section and slowly twist the barrel away from your head, allowing the entire length of your hair to wrap around the barrel. Ensure all hair is going over the hot plates at the bottom of the tool.
4. Once the majority of your hair is wrapped around, you can release the end of the hair. Use both hands to continue twisting the iron, guiding it down the hair shaft.
5. Release the hair when you reach the end of the section.
6. Repeat for all sections of hair, working from the bottom layers to the top.
7. For a casual, beachy wave look, gently run your fingers through your curls to loosen them.

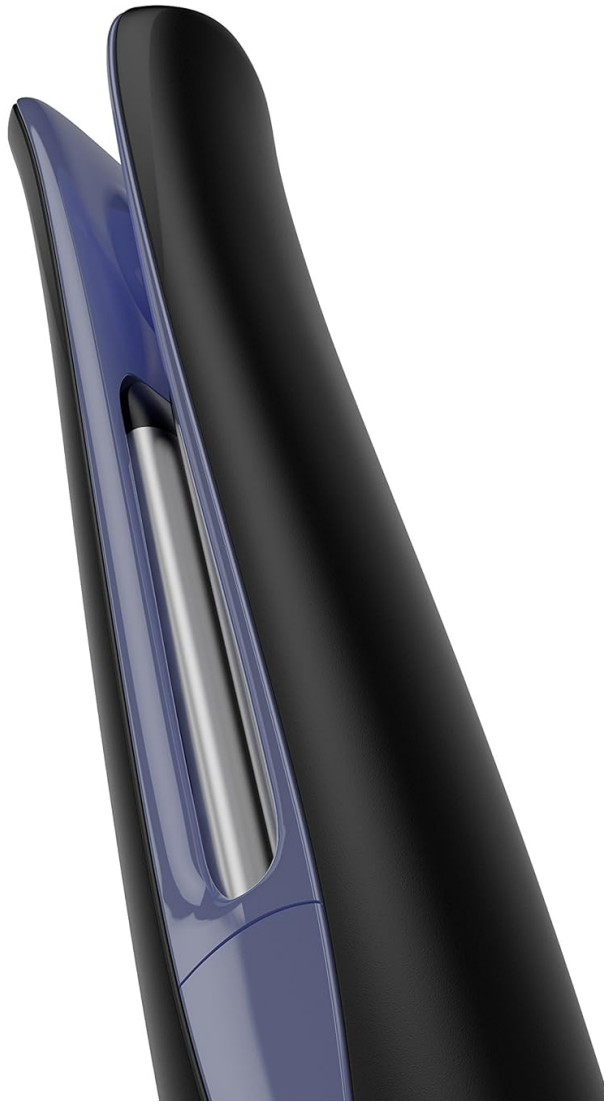


Image: A close-up view of the Remington CI41T1's floating ceramic plates, ideal for guiding hair for curls.

## **Straightening Hair (Touch-Ups)**

---

1. For touch-up straightening, take a section of hair and place it between the floating plates of the iron.
2. Apply gentle pressure and slowly glide the straightener along the length of the hair section, from root to tip.
3. The floating plate design allows the plates to move with your hair, ensuring consistent heat and smooth results.
4. Repeat as necessary for desired straightness.

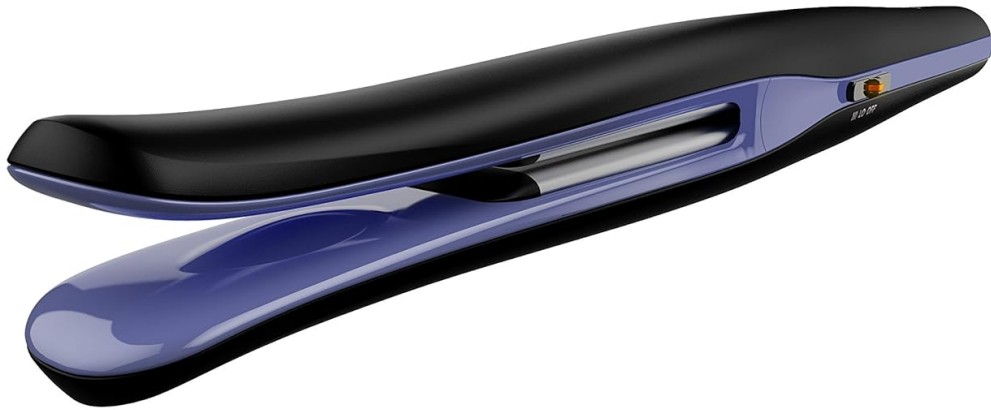


Image: The Remington CI41T1 in use, demonstrating its ability to straighten hair for quick touch-ups.

## Official Product Video Tutorial

---

Your browser does not support the video tag.

Video: A comprehensive tutorial demonstrating how to use the Remington CI41T1 for both curling and straightening, including tips for achieving different styles.

## MAINTENANCE

---

- Always unplug the appliance and allow it to cool completely before cleaning.
- Wipe the plates and exterior surfaces with a damp cloth. Do not use abrasive cleaners or solvents.
- Ensure no water or other liquid enters the appliance.
- Store the appliance in the provided storage pouch in a cool, dry place. Do not wrap the cord around the appliance, as this can cause damage over time.

## TROUBLESHOOTING

---

Problem	Possible Cause	Solution
---------	----------------	----------

Problem	Possible Cause	Solution
Appliance does not turn on.	Not plugged in correctly or power outlet issue.	Ensure the appliance is securely plugged into a working electrical outlet. Check the power switch is in the 'HI' or 'LO' position.
Appliance not heating up.	Power switch is OFF or internal fault.	Verify the switch is set to 'HI' or 'LO'. If still not heating, contact customer support.
Hair is not curling/straightening effectively.	Incorrect technique, hair too wet, or temperature too low.	Ensure hair is completely dry. Review the operating instructions for proper technique. Try the 'HI' setting for thicker hair.
Appliance automatically shuts off.	60-minute auto shutoff feature activated.	This is a safety feature. Simply turn the appliance off and then back on to resume use.

## SPECIFICATIONS

---

- **Model Number:** CI41T1 (COMINE4035095)
- **Plate Type:** 1-inch Floating Ceramic Plates
- **Heat Settings:** Two settings (350°F / 410°F)
- **Heat-up Time:** 30 seconds
- **Auto Shutoff:** 60 minutes
- **Cord:** Swivel fabric cord
- **Special Features:** Cool-touch ends, LED power indicator
- **Dimensions:** 14.25 x 1.5 x 1.5 inches
- **Weight:** 12 ounces
- **Color:** Black/Purple
- **Material:** Ceramic
- **UPC:** 074590547887

## WARRANTY AND SUPPORT

---

This Remington CI41T1 Professional 2-in-1 Plate Guided Hair Curler & Touch Up Straightener comes with a **2-year limited warranty** from the date of purchase. This warranty covers defects in materials or workmanship under normal use.

For warranty claims, technical support, or further assistance, please contact Remington Customer Service. Keep your proof of purchase for warranty validation.

For more information, visit the official Remington website or refer to the contact details provided in your product packaging.